

Mike Milburn
Chair
Montana

Doug Grob
Montana

Jeffery C. Allen
Idaho

Ed Schriever
Idaho



Northwest **Power** and Conservation Council

Thomas L (Les) Purce
Vice Chair
Washington

KC Golden
Washington

Margaret Hoffmann
Oregon

Charles F. Sams III
Oregon

June 9, 2026

MEMORANDUM

TO: Council Members

FROM: Rudy Salakory, Oregon Policy Analyst

SUBJECT: Willamette Wildlife Mitigation Program: 16 Years of Partnerships and Conservation

BACKGROUND:

Presenter: Kelly Reis, Willamette Fish and Wildlife Policy and Program Manager, Oregon Department of Fish & Wildlife

Summary: For the last 16 years The State of Oregon (Oregon) and Bonneville Power Administration (BPA) along with a constellation of partners have been implementing the Willamette Wildlife Mitigation Program (WWMP). Kelly Reis will discuss lessons learned, success stories, and how the Program has been implemented and how it is transitioning into its next phase.

Relevance: In October of 2010 Bonneville Power Administration and the State of Oregon signed a Memorandum of Agreement around BPA's mitigation requirements under the Northwest Power Act. This MOA was the first comprehensive wildlife settlement and continues to be a model of success as it transitions from implementation to ongoing maintenance.

Background: As outlined in the MOA, BPA agreed to provide over \$144 million to allow Oregon to mitigate for at least 16,880 additional acres of habitat over what had already been conserved. The MOA permanently resolved wildlife mitigation related to the Willamette River Basin Flood Control Project dams.

There are two projects associated with the WWMP, Project #2011-003-00, which provides funding for acquisition and long-term stewardship (capital funding) and Project #2011-004-00 which provides for activities associated with the MOA such as management of program implementation, monitoring and evaluation, habitat restoration, and operations and maintenance.

WWMP is currently winding down the acquisition side of the program (capital funding) with a solicitation out this year (2026), after which the program will continue to work on restoration, operations and maintenance, and other activities which support acquisitions funded through the MOA or were accomplished prior to the MOA.

More info: WWMP Home Page <https://www.dfw.state.or.us/habitat/WWMP>

Memo from Council's November 2010 Meeting presented by Karl Weist (NPCC), Lorri Bodi (BPA), and Chris Wheaton (ODFW). Includes analysis and a copy of the MOA https://www.nwcouncil.org/sites/default/files/2010_1109_4.pdf

Willamette Wildlife Mitigation Program: 16 Years of Partnerships and Conservation

Presentation to the Northwest
Power and Conservation Council

June 17, 2026

Kelly Reis, Willamette Fish and Wildlife Policy and
Program Manager, ODFW



Chipping Sparrow



Setting the Stage

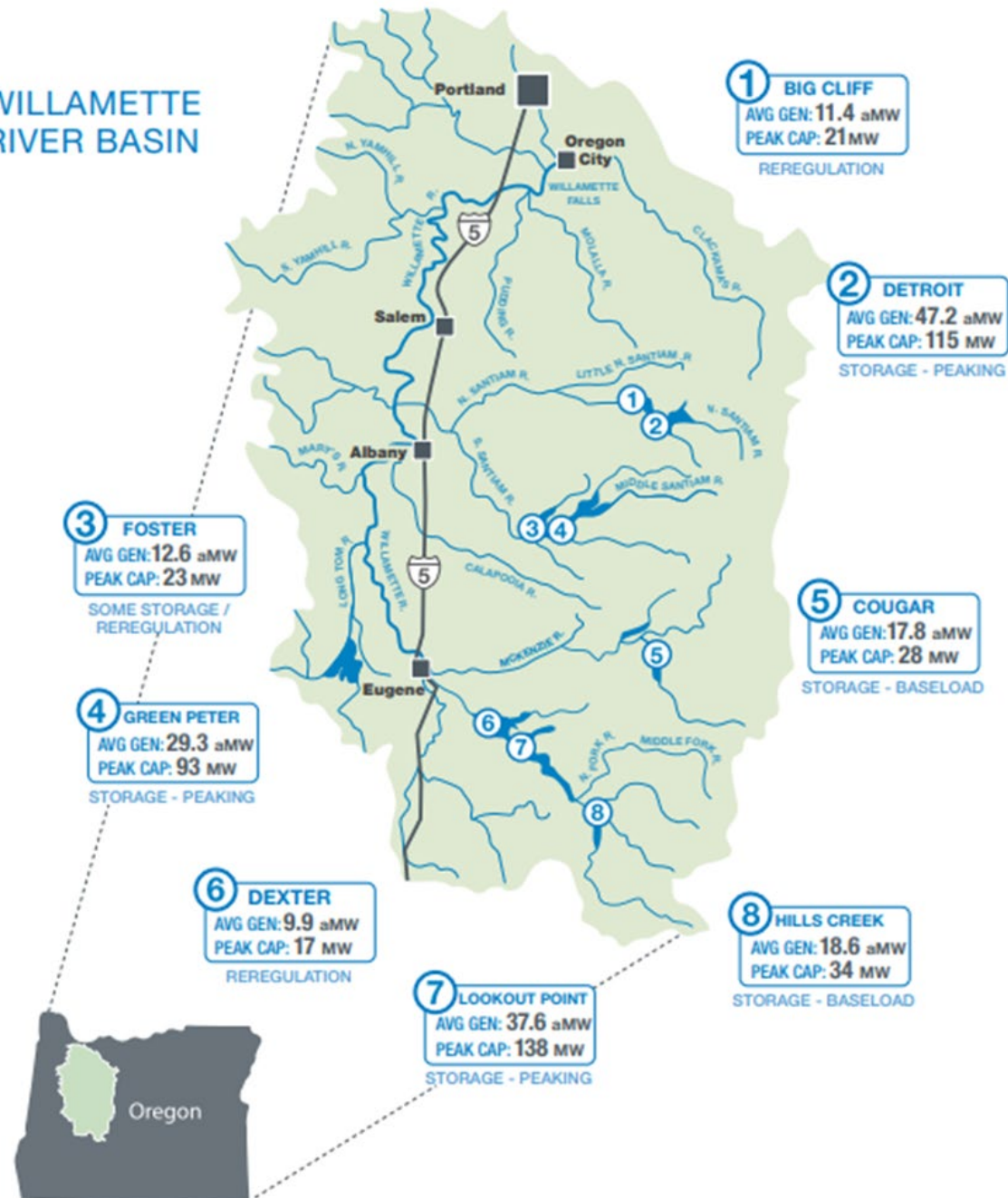
Willamette Valley System: 13 dams, 8 with power

Mitigation responsibility: 1980 NW Power Act

Mitigation needed: 94,275 Habitat Units

Implementation: Annual contracts with ODFW and NGOs

WILLAMETTE RIVER BASIN



Willamette Wildlife Mitigation Program

2010 Year of Settlement Agreement between Bonneville Power Administration and State of Oregon

16,880 Acres of Willamette basin wildlife habitat to protect by 2025

10 Percent of project funding to benefit ESA-listed fish

\$26M Funding for ODFW to manage the WWMP

3 Number of participating tribes



Habitat protection priorities based on Oregon's State Wildlife Action Plan (SWAP)

Oregon's Approach

- Partnership Model
- Technical and Policy Teams
- BPA/ODFW Partnership + Council
- Funding Certainty
- Stewardship Funding



Streaked horned lark (Tom Grey photo)



Two Funding Elements

Acquisition Funds

- Acquisition costs
- Long-term stewardship
- Due diligence

ODFW Program Funds

- ODFW staff
- Develop & implement Program
- O&M and restoration on ODFW properties
- Monitoring
- Legacy project O&M
- Habitat management assistance

The Willamette Wildlife Mitigation Program contributes to Oregon's natural resource legacy by conserving important wildlife habitat in the Willamette Basin.

Protect at least 16,880 acres of wildlife habitat by 2025



Diverse habitats throughout the Willamette Basin



Conservation Opportunity Areas and Key Habitats in support of the State Wildlife Action Plan



Support SGCN and ESA-listed species

Strategies for Success

- High quality wildlife habitat, connectivity, and significant cultural values
- Value of degraded habitats and corridors
- Cost-share
- Partnerships
- Public access
- Dual purpose – aquatic habitat/ESA anadromous fish
- Project selection criteria are adaptive

Red-legged frog (Ann Kreager)



Tarweed at Native Oaks Ridge (MRT) (K. Reis photo)

Involving Stakeholders

Wildlife Advisory Group – strategic guidance and coordination for Agreement implementation; review project selection criteria as needed

Tribal: Grand Ronde, Siletz and Warm Springs

Federal: BPA, USFWS

Regional: NPCC

State: OWEB, ODFW

City: Eugene, Metro

Land Protection / Conservation: Land Trust Alliance,
Pacific Birds Habitat Joint Venture

At Large: Agriculture, Conservation

Technical Review Team – scientific and technical experts review and score project proposals

Tribal: Grand Ronde, Siletz and Warm Springs

Federal: BPA, USFWS, USGS, NRCS

State: OWEB, ODFW

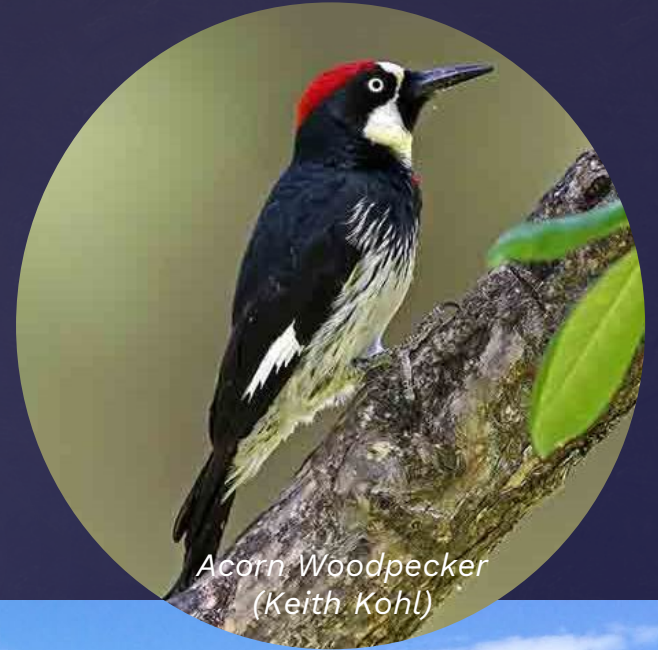
Selection Criteria Align with Program Strategies and Priorities

62

Points for Ecological and Cultural Considerations

38

Points for Operational and Administrative Considerations



*Acorn Woodpecker
(Keith Kohl)*



Smithfield Oaks (Polk SWCD)

Ecological and Cultural Considerations

Cultural Significance

Habitat Type

Habitat Condition

Project Context

Restoration Likelihood

Risk



Oak Basin CE (GLT) (L. Brewster)



Operational & Administrative Considerations

Acquisition Type

Public Access

Long Term Stewardship

Manager Capability

Cost and Cost Share

Realty Readiness



Measuring Progress

Total Mitigation

26,537 acres

23 Legacy Properties

9 CE / 14 FTA

9,657 acres

\$59,051,886

Average \$6,115 /acre

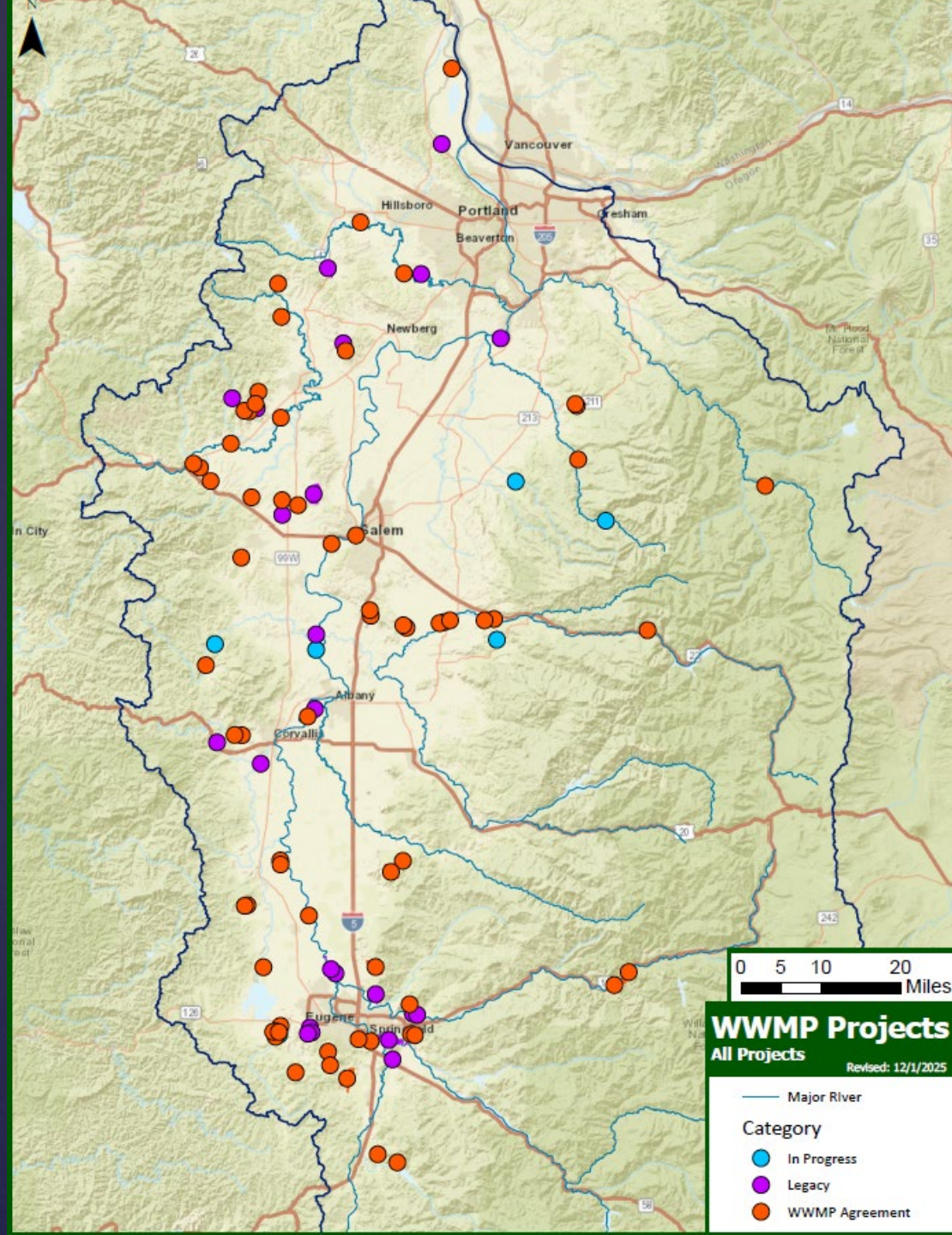
67 Agreement Properties

15 CE / 52 FTA

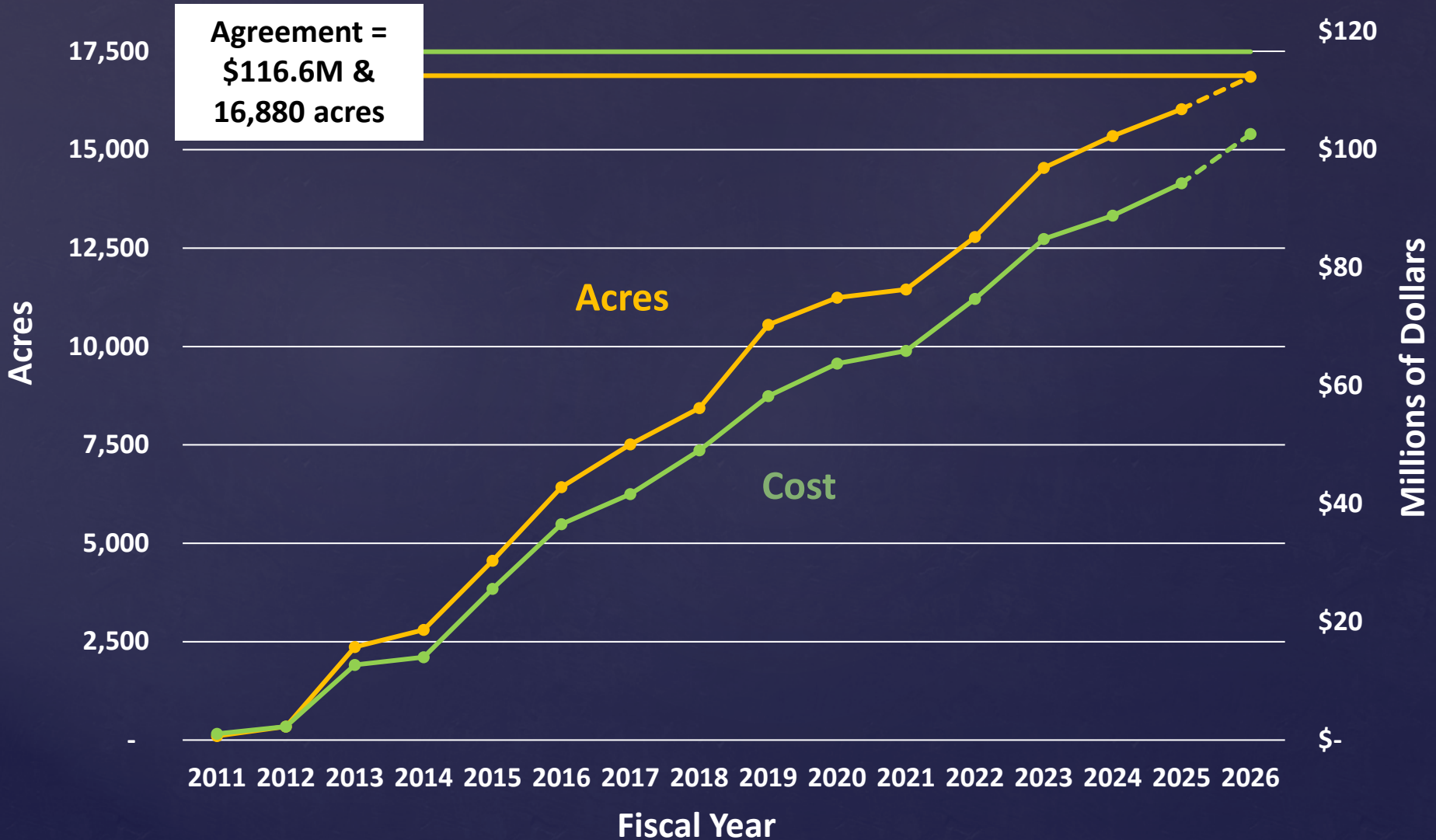
16,211 acres

\$96,672,283

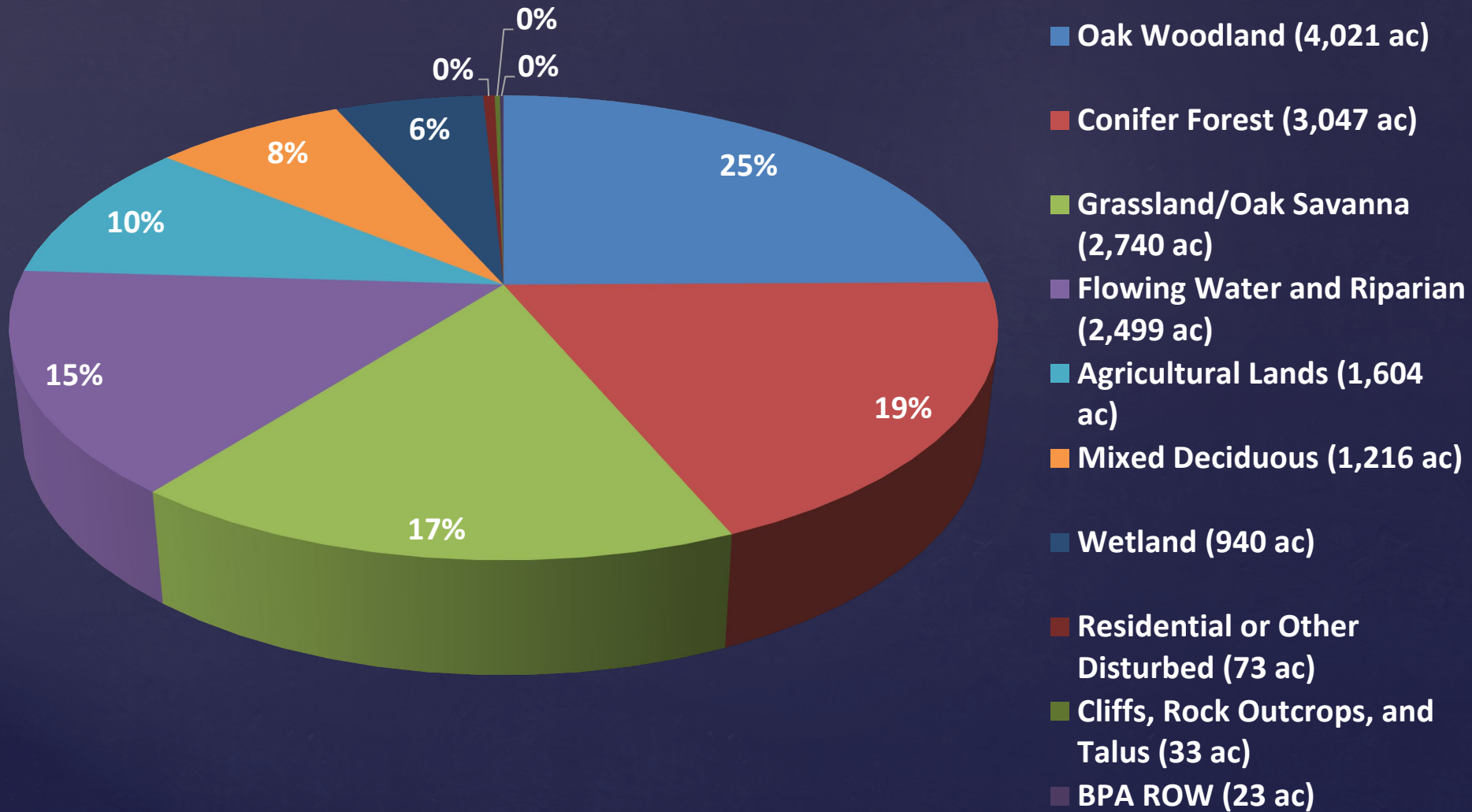
Average \$5,963/acre



Cumulative Cost and Acres Trending in the Right Direction



Successfully Protecting Priority Habitats

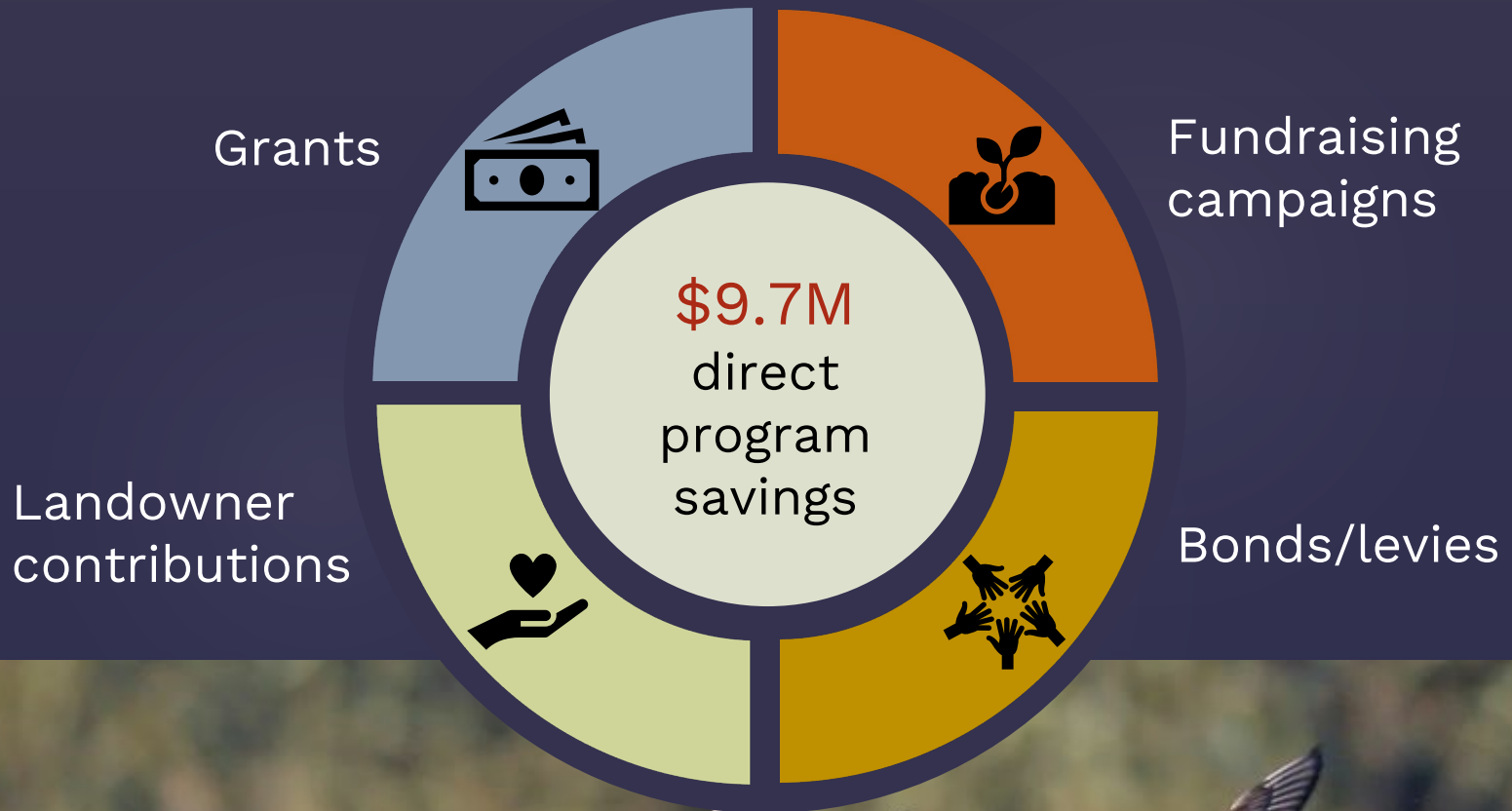


Culturally Significant Projects Emphasized

Projects are designated by at least one of the three tribes named in the Agreement

- 52 of 67 closed projects determined to be culturally significant
- 5 of 5 projects in progress are designated as culturally significant

Impressive Partner Cost Share!



At Least 10% of Funding for Dual Benefit Projects

Projects are reviewed by the Habitat Technical Team

\$20.1M (17%) spent on dual benefit projects (16 projects, ~3k acres)

\$5.5M in potential dual benefit projects closed or in progress (4 projects, ~560 acres)





Monitoring BPA's Mitigation Investments

Implementation

Compliance

Habitat
Condition

Adaptive
Management

Conservation Easement Reporting Application “CERA”

- Streamlined Annual Reporting
- Web-based Application
- Centralized Database
- Improved Tracking and Accountability

Willamette Wildlife Mitigation Projects Land Management Plans M

Monitoring Event Details

Land Management Plans and Projects Information

Project Name
+ [Gail Achterman Wildlife Area](#)

Section I: Activities on the Property

[Action Recording for Hayden Island LMP 2018](#)

Gail Achterman Wildlife Area

[Habitats for Gail Achterman Wildlife Area](#)

[Changes in Real Property Interests for Gail Achterman Wildlife Area](#) 0 entries

[Water Rights for Gail Achterman Wildlife Area](#) 0 entries

[Incident Reporting for Gail Achterman Wildlife Area](#) 0 entries

Section II: Conservation Easement Reporting

Gail Achterman Wildlife Area

[Easement Prohibited Uses for Gail Achterman Wildlife Area](#)

[Easement Specifically Permitted Uses for Gail Achterman Wildlife Area](#)

Section III: Stewardship and Proceeds Accounting

Comingled Account Name: ODFW (FY: 7/11/2025 to 7/11/2026)

[Stewardship Information for Gail Achterman Wildlife Area](#)

Section IV: Other

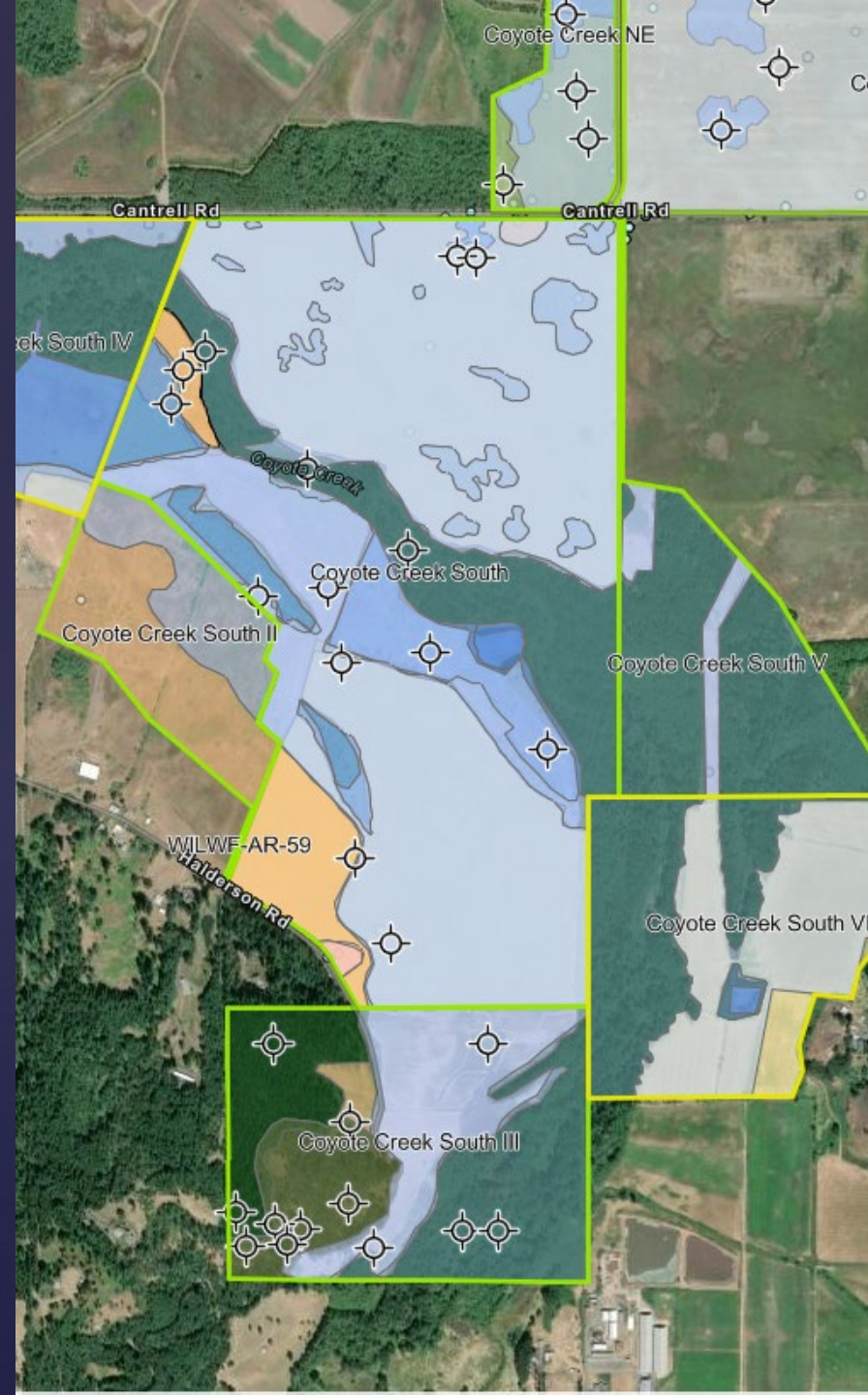
Gail Achterman Wildlife Area

[Additional Information for Gail Achterman Wildlife Area](#) 0 entries

Section V: Attachments

Habitat Condition Monitoring

- Ground-truth annual reporting
- Verify habitat conditions
- Document changes in GIS
- Emerging issues
- Inform Adaptive Management



Reflections after 16 Years

- Progressing towards Agreement goals
- Valuing tribal and stakeholder involvement through an inclusive and collaborative approach
- Implementing high-quality projects through a rigorous selection process
- Leveraging cost share and partnerships for larger impact
- Providing opportunities for restoration investments

More Reflections after 16 Years

Monitoring habitat investments

Planning strategically with
scheduled, adequate funding

Continuing partnership between
BPA and ODFW

Managing adaptively for continued
success



Photo credit: Keith Kohl

What Comes Next?



On-going pressures on wildlife and their habitats



Post-2026 funding for continued monitoring and adaptive management



Changing funding landscape – leverage investments



Western rattlesnake (WDFW)

Questions



Lane Wintermute (USFWS)