

Jeffery C. Allen
Chair
Idaho

Ed Schriever
Idaho

Doug Grob
Montana

Mike Milburn
Montana



Northwest **Power** and **Conservation** Council

KC Golden
Vice Chair
Washington

Washington

Ginny Burdick
Oregon

Louie Pitt, Jr.
Oregon

March 7, 2023

MEMORANDUM

TO: Council Members

FROM: Mark Fritsch

SUBJECT: Briefing on Columbia River Basin salmon and steelhead returns for 2022 and forecasts for 2023

BACKGROUND:

Presenter: Charlene Hurst (Columbia River Management Unit Lead Fish Program) of the Washington Department of Fish and Wildlife, and John Powell (ESA Program Coordinator) of the Idaho Department of Fish and Game.

Summary: Charlene will provide an overview on adult Chinook, coho, sockeye, and chum salmon and steelhead run forecasts for the Columbia River, and expectations for the 2023 fisheries. The presentation will also include a retrospective review of the 2022 adult salmon and steelhead returns and fisheries.

John will provide additional information for the Snake River Basin for salmon and steelhead returns along with the forecasted returns for 2023, focusing on the species/run groupings¹ of spring, summer and fall Chinook salmon; summer steelhead; and sockeye salmon.

¹ Numbers of fish passing Lower Granite Dam comprise the aggregate count of adult salmon and steelhead destined for eastern Oregon's Grande Ronde and Imnaha river drainages and Idaho's Clearwater and Salmon River drainages.

Relevance: This information is relevant to the Council's high-level indicators, the Council's Fish and Wildlife Program objectives and the strategy performance indicators. It gives the region a preview for what is expected for adult salmon and steelhead returns in the current year.

Workplan: Fish and Wildlife Division work plan 2023 (Draft); Program planning & policy; Data and information management.

More Info:

- [2023 Joint Staff Report](#) – Stock Status and Fisheries for Spring Chinook, Summer Chinook, Sockeye, Steelhead, and Other Species.
- [Columbia River reports, forecasts, returns, and fishery plans](#)
- Data Access in Real Time (DART). Interactive, timely access to integrated Columbia Basin salmonid, environmental, hydrosystem operations, riverine, ocean and climatic data resources. <http://www.cbr.washington.edu/dart>

Columbia River Salmon and Steelhead returns, forecasts and fisheries

Dr. Charlene Hurst, Columbia River Management Unit Lead, WDFW

Dr. John Powell, ESA Program Coordinator, IDFG

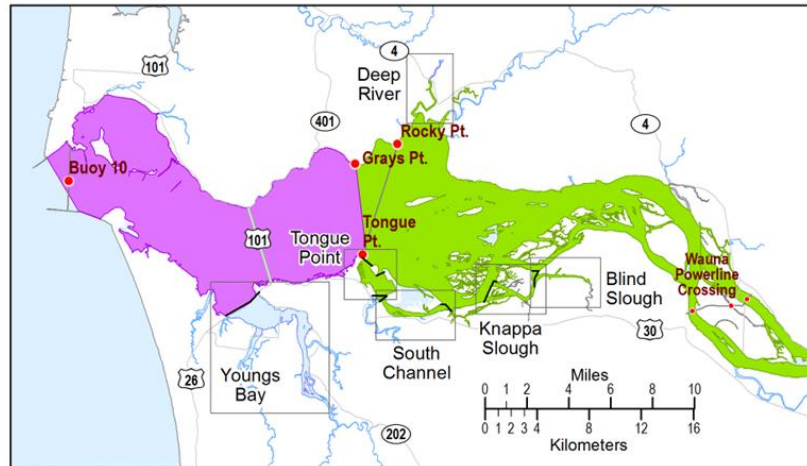
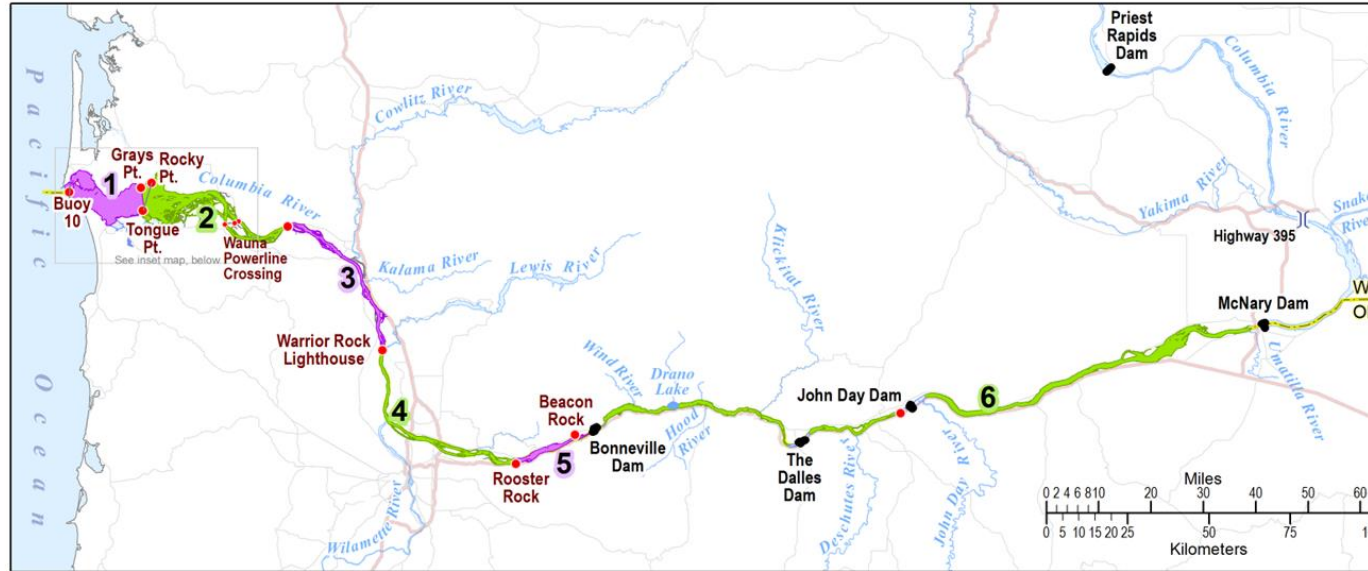
Art Martin, Columbia River Coordination Section Manager, ODFW



NWPCC, March 15, 2023

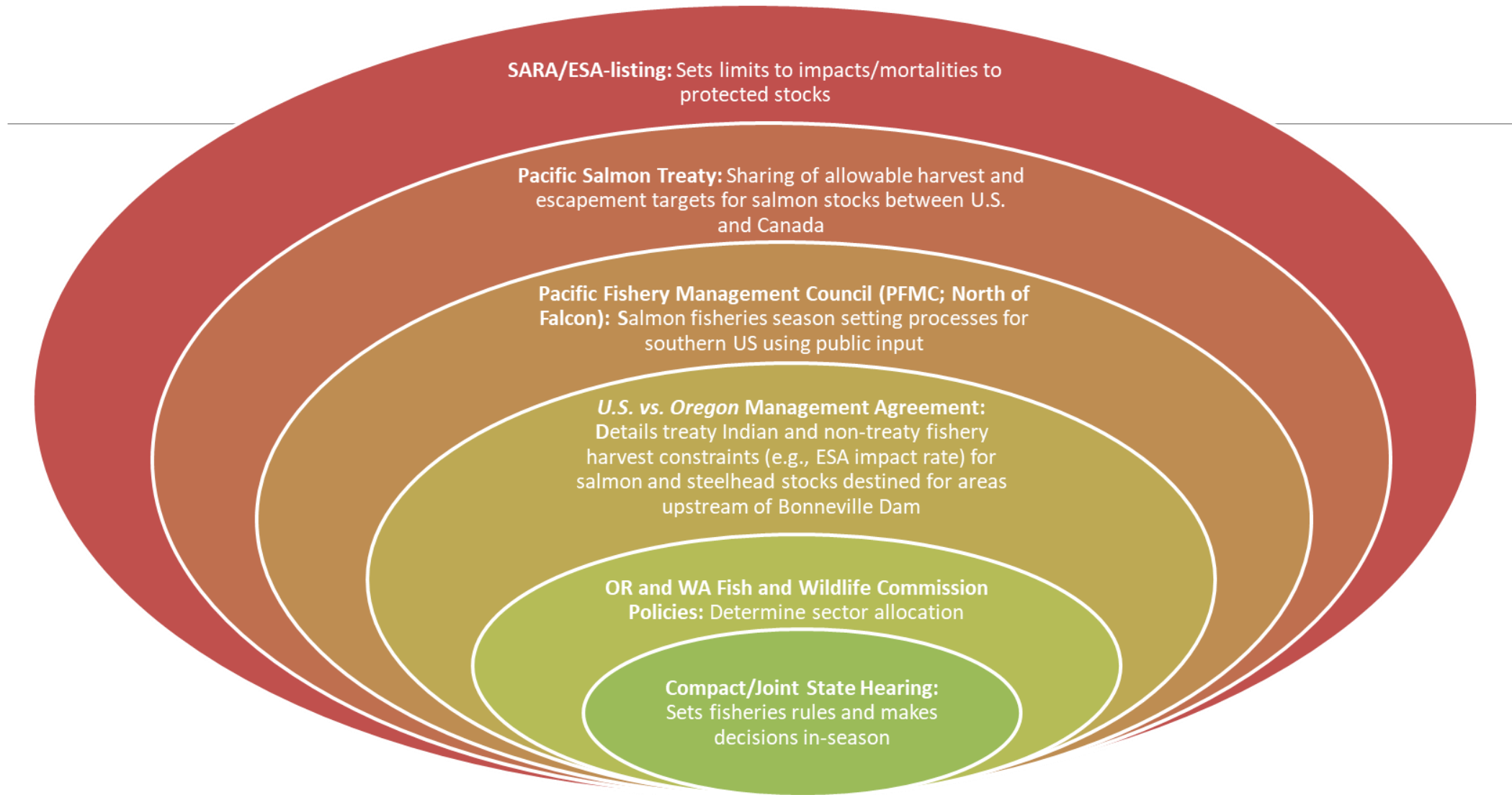
Fisheries Overview

Columbia River Fishery Zones



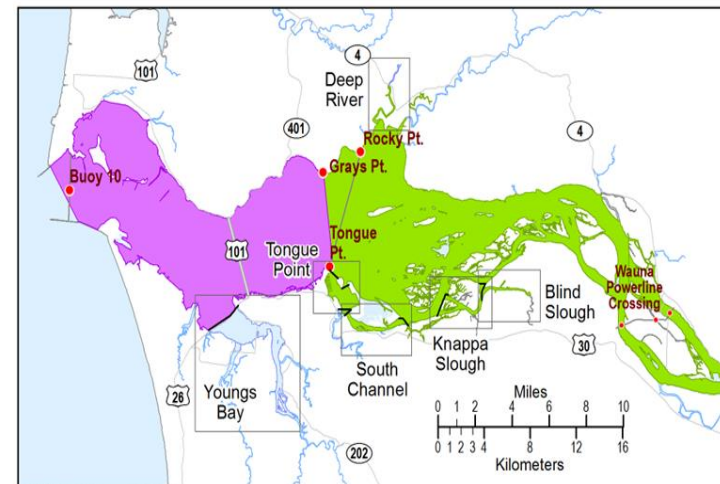
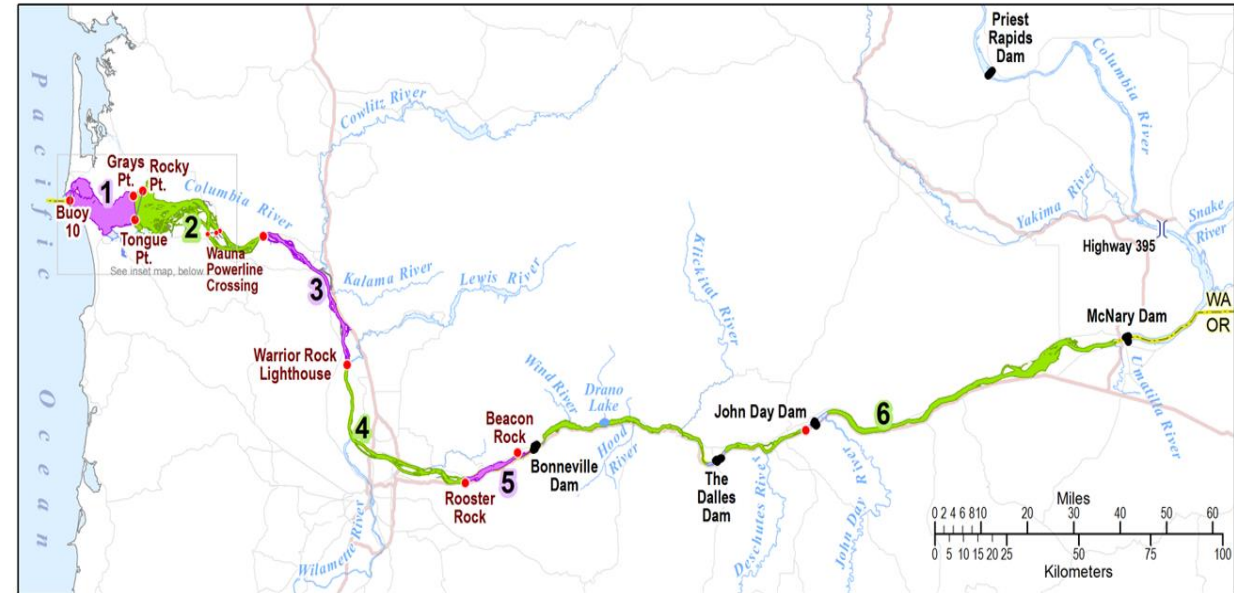
WDFW Fish Science, 11/23/2021

Management Framework



2022 Non-Indian Commercial Fisheries

Season	Location	Target Fish species
Winter/Spring	Reduced Zone 4-5 Mainstem	Hatchery spring Chinook salmon; one open period
	Select Areas (off- channel areas)	Local hatchery released spring Chinook salmon
Summer	Mainstem	Closed
	Select Areas	Local hatchery released spring Chinook salmon
Fall	Zone 1-3 Mainstem	Hatchery coho salmon
	Zone 4-5 Mainstem	Chinook
	Select Areas	Local hatchery released fall Chinook and coho salmon



WDFW Fish Science, 11/23/2021

2022 Non-Indian Sport Fisheries

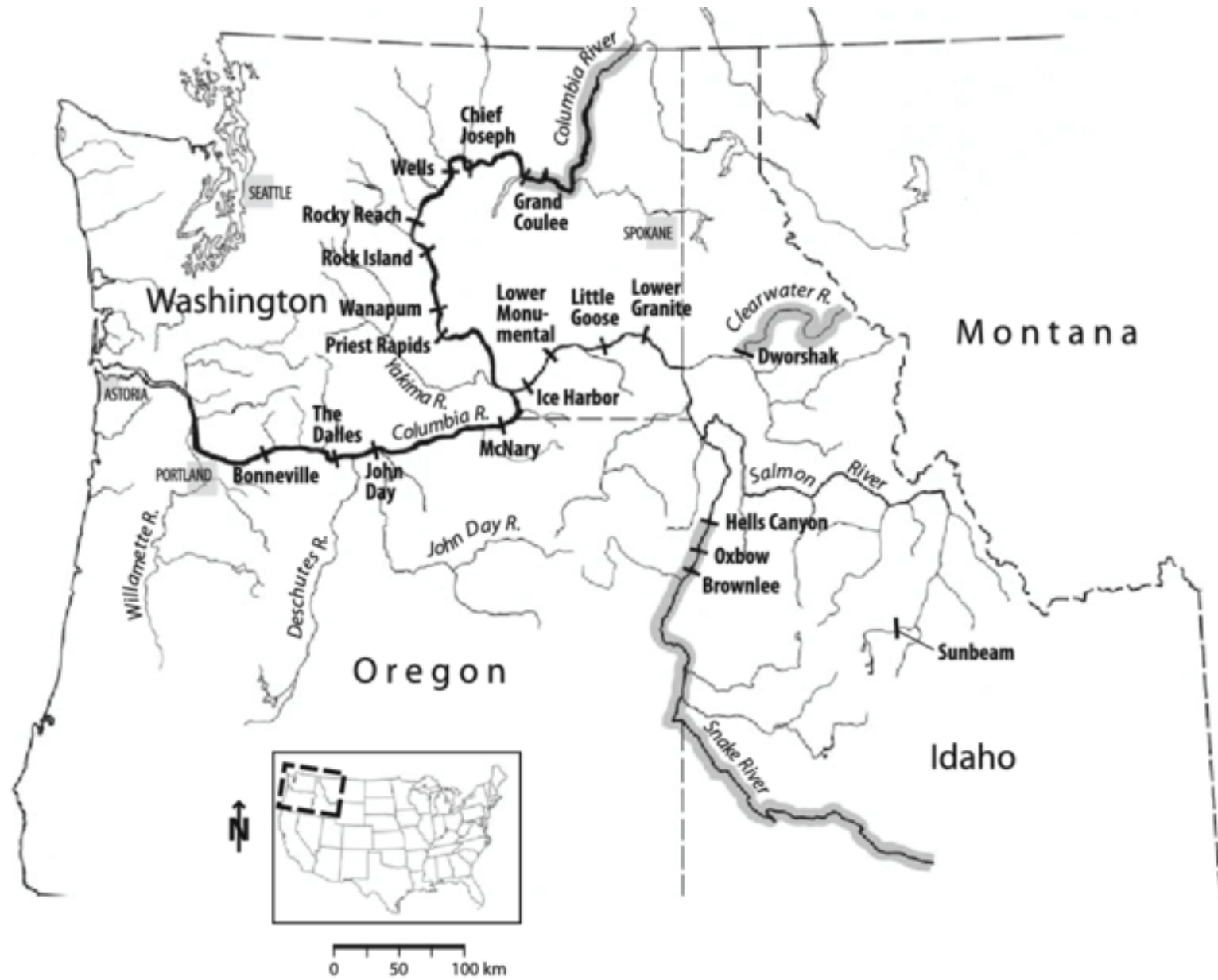
Season	Location	Target Species
Spring	Buoy 10 to WA/OR Border (upstream McNary Dam)	Hatchery spring Chinook salmon and hatchery steelhead
	Snake River (WA)	Hatchery spring Chinook salmon
Summer	Below Bonneville	Hatchery summer Chinook salmon and hatchery steelhead
	Bonneville to Priest Rapids Dam	Sockeye and hatchery summer Chinook salmon
	Priest Rapids Dam to Chief Joseph Dam	Sockeye and hatchery summer Chinook salmon
Fall	Buoy 10	Fall Chinook and hatchery coho: Inseason closure due to catch of LRH exceeding recreational allocation
	Below Bonneville	
	Bonneville to Priest Rapids Dam	Fall Chinook and coho salmon (except hatchery coho downstream of Hood River Bridge).
	Snake River	Chinook salmon and hatchery steelhead

2022 Returns and 2023 Forecasts for the Columbia Basin

U.S. v Oregon

Technical Advisory Committee

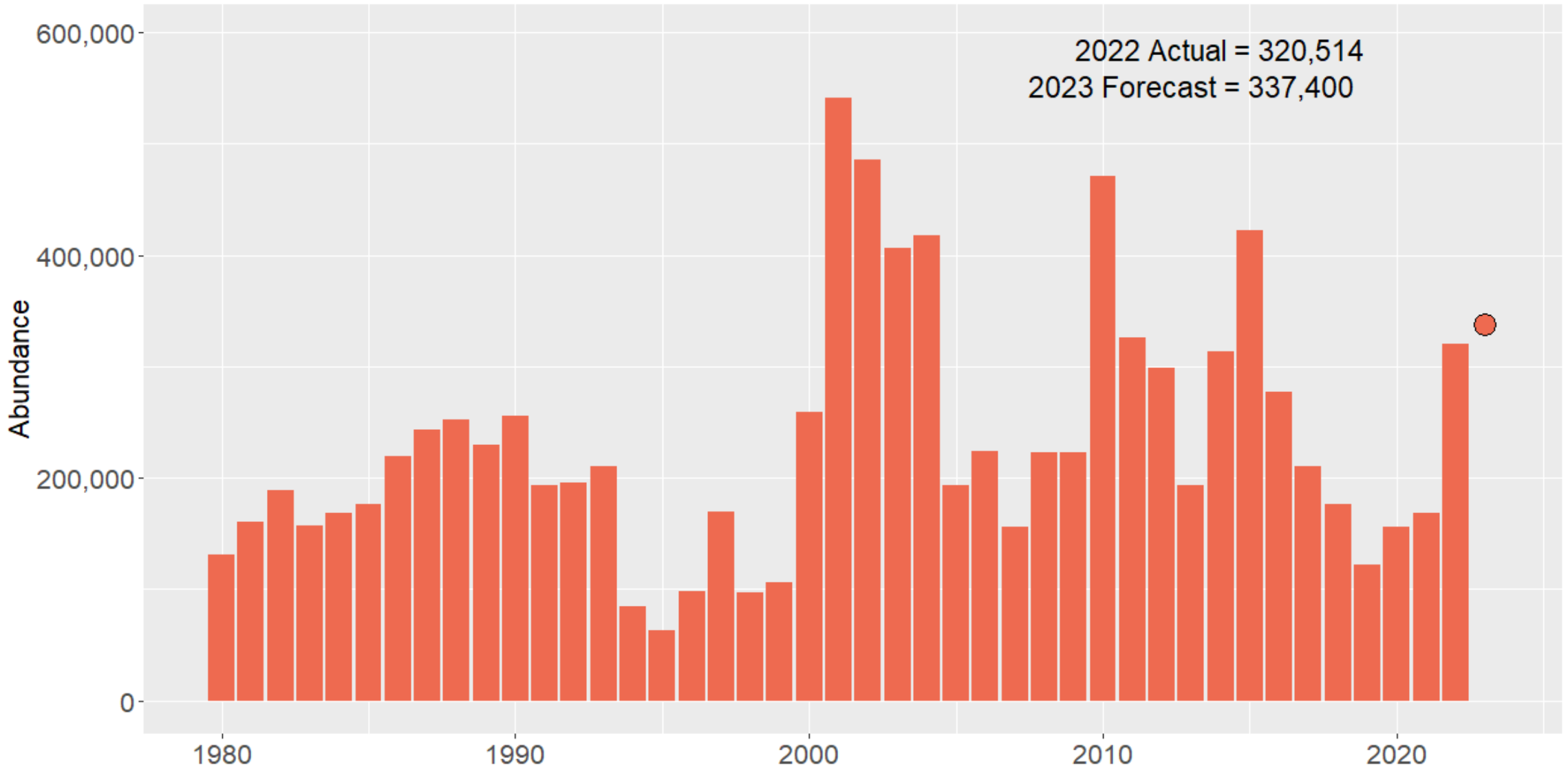
- Consists of staff from federal, tribal and state entities
- TAC 'reconstructs' Columbia River salmon and steelhead returns post season and develops pre-season forecasts.
- TAC reviews salmon and steelhead stock status as the runs progress and provides in-season run size updates.
- In-season updates allow fishery managers to adjust fisheries to remain within harvest constraints



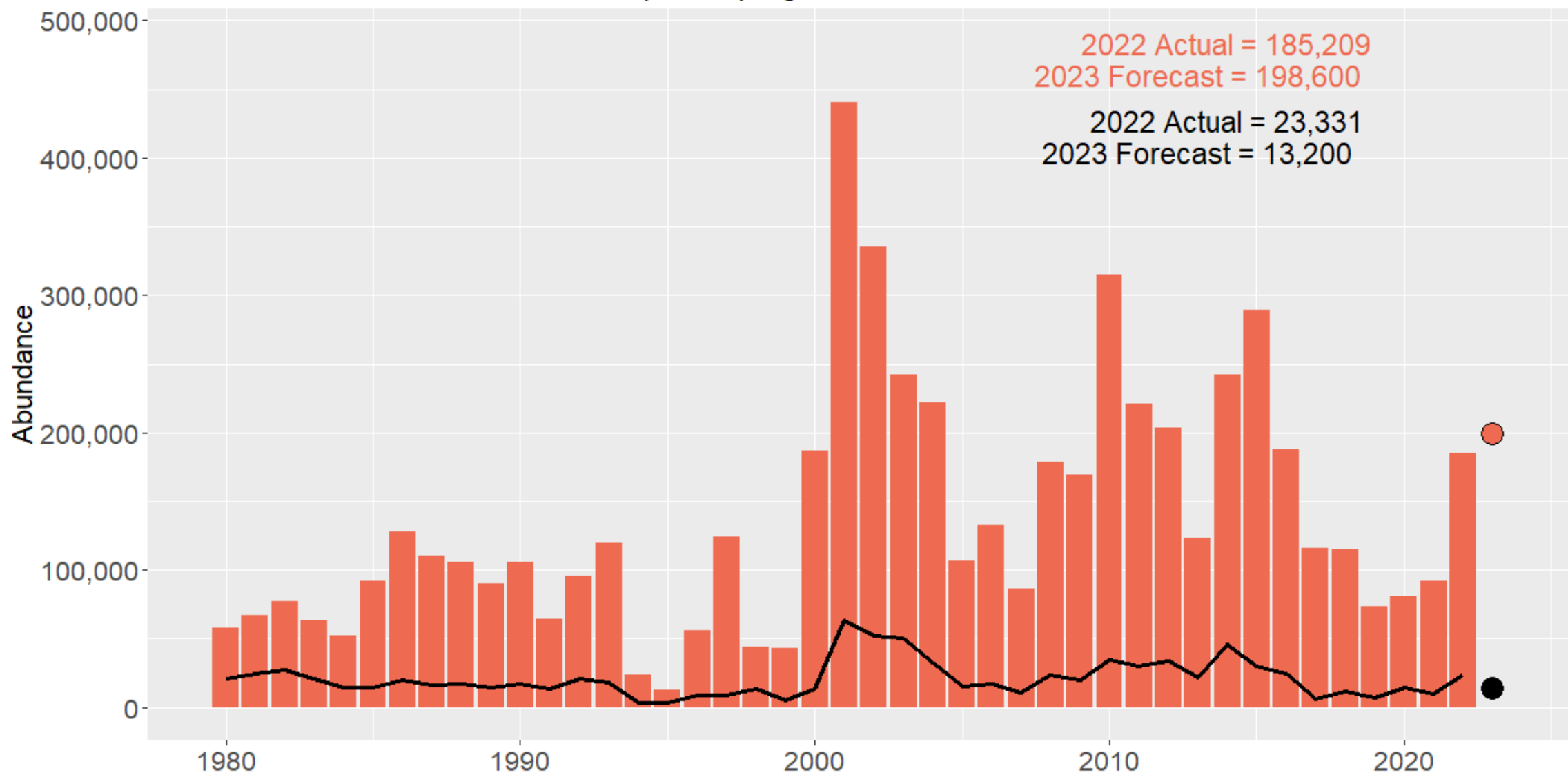


Chinook Salmon

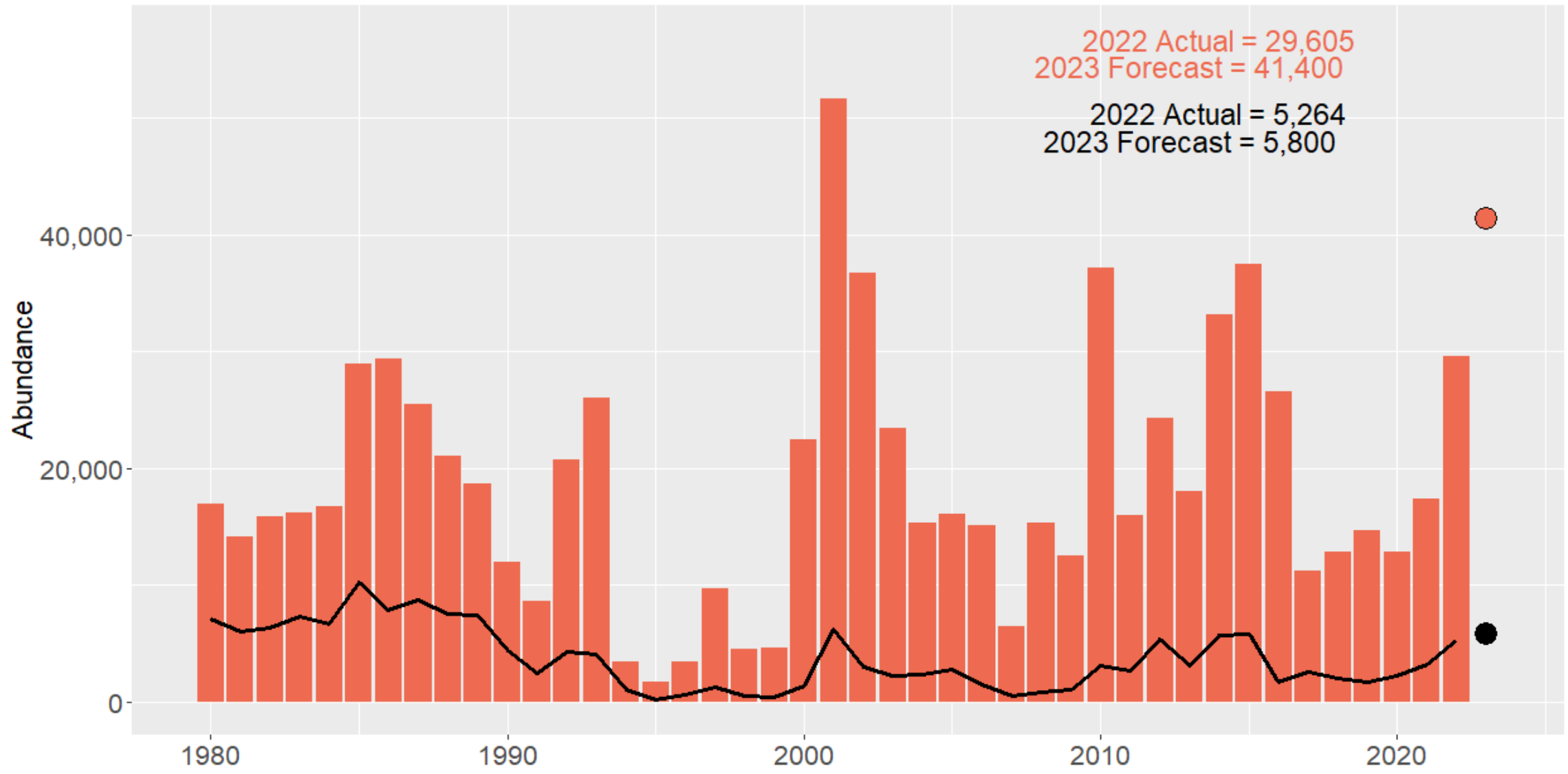
Lower and Upriver Spring Chinook



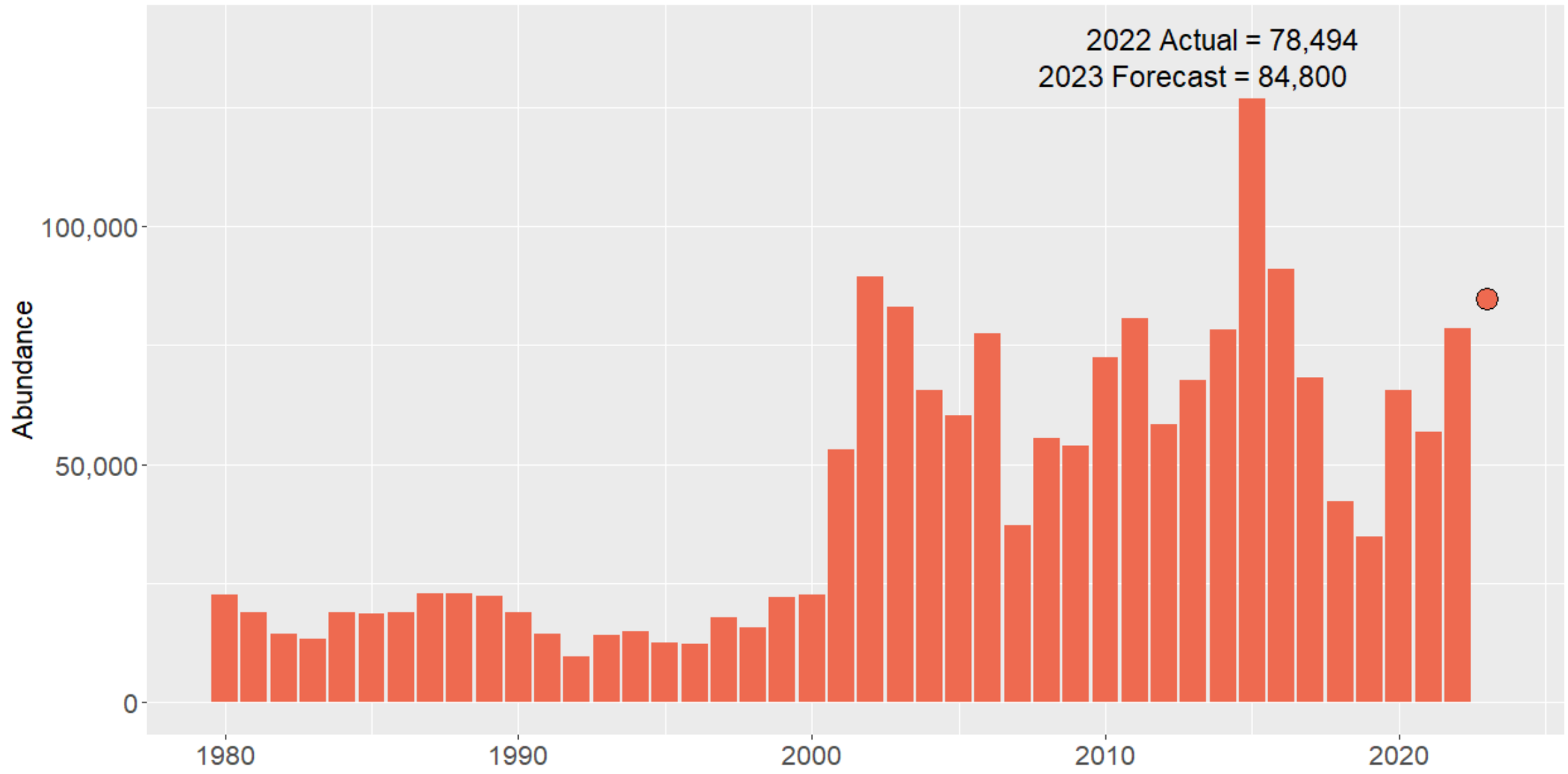
Upriver Spring Chinook and Snake wild



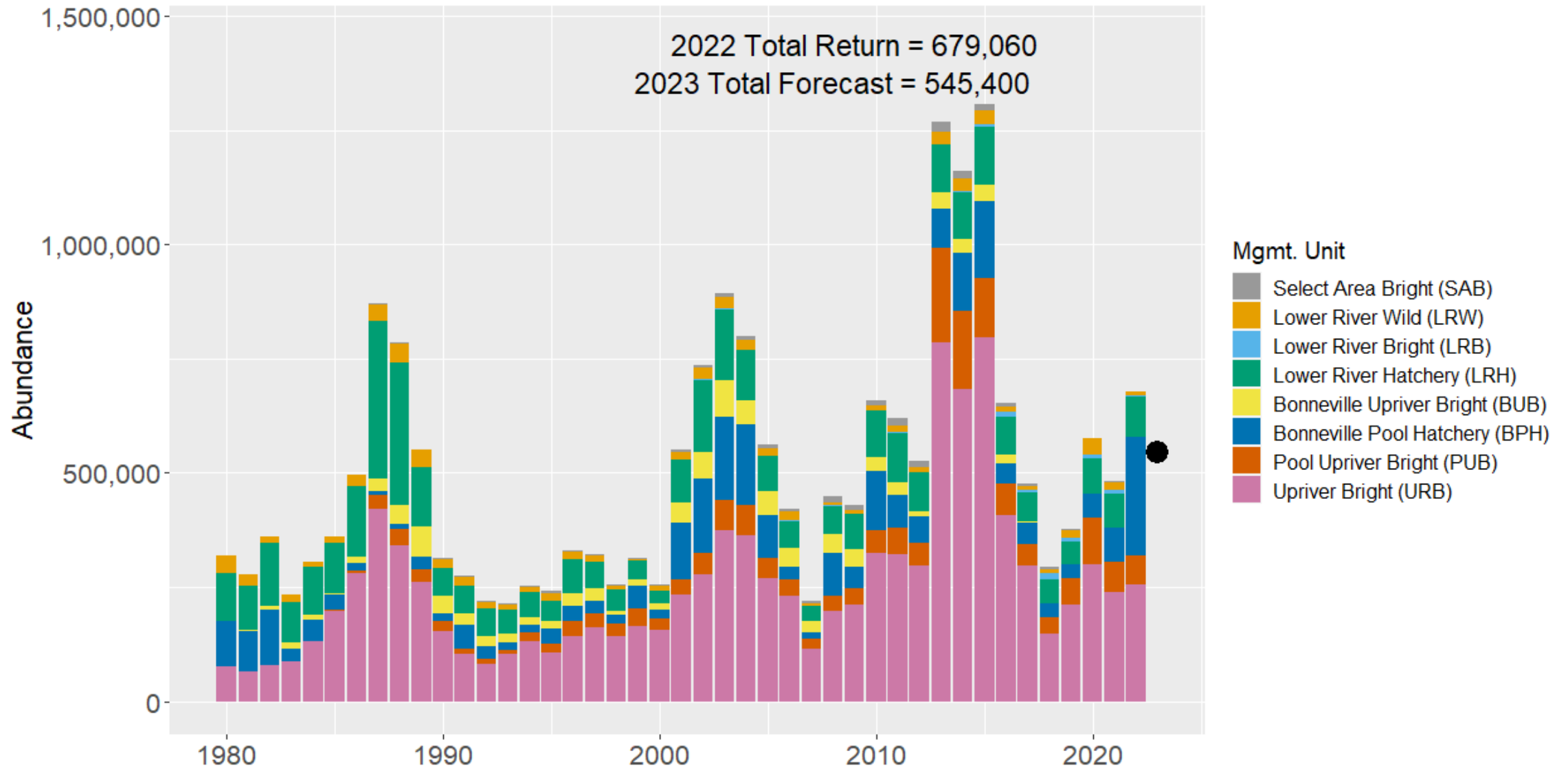
Upper Columbia Spring Chinook and Wild



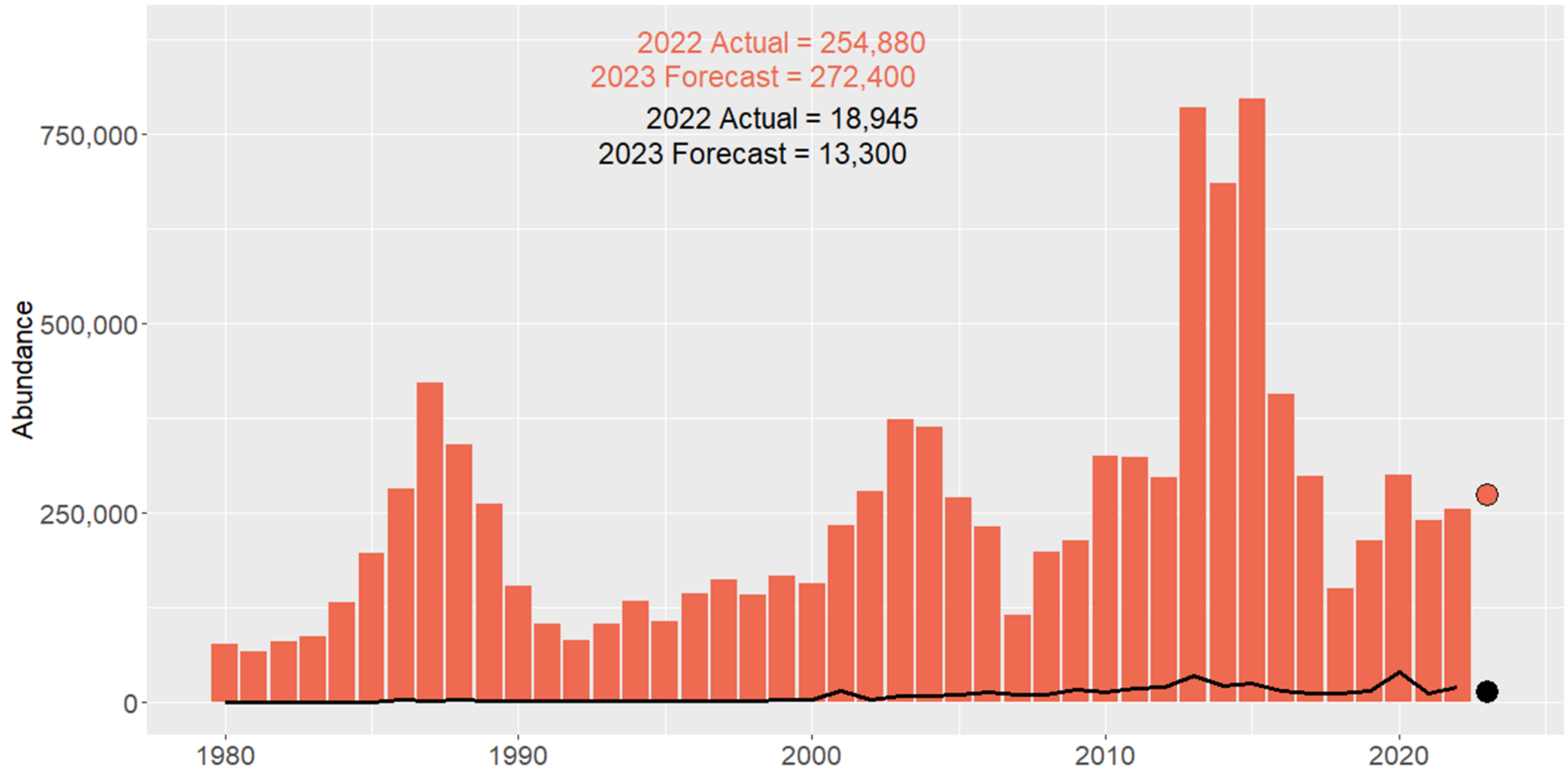
Upper Columbia Summer Chinook



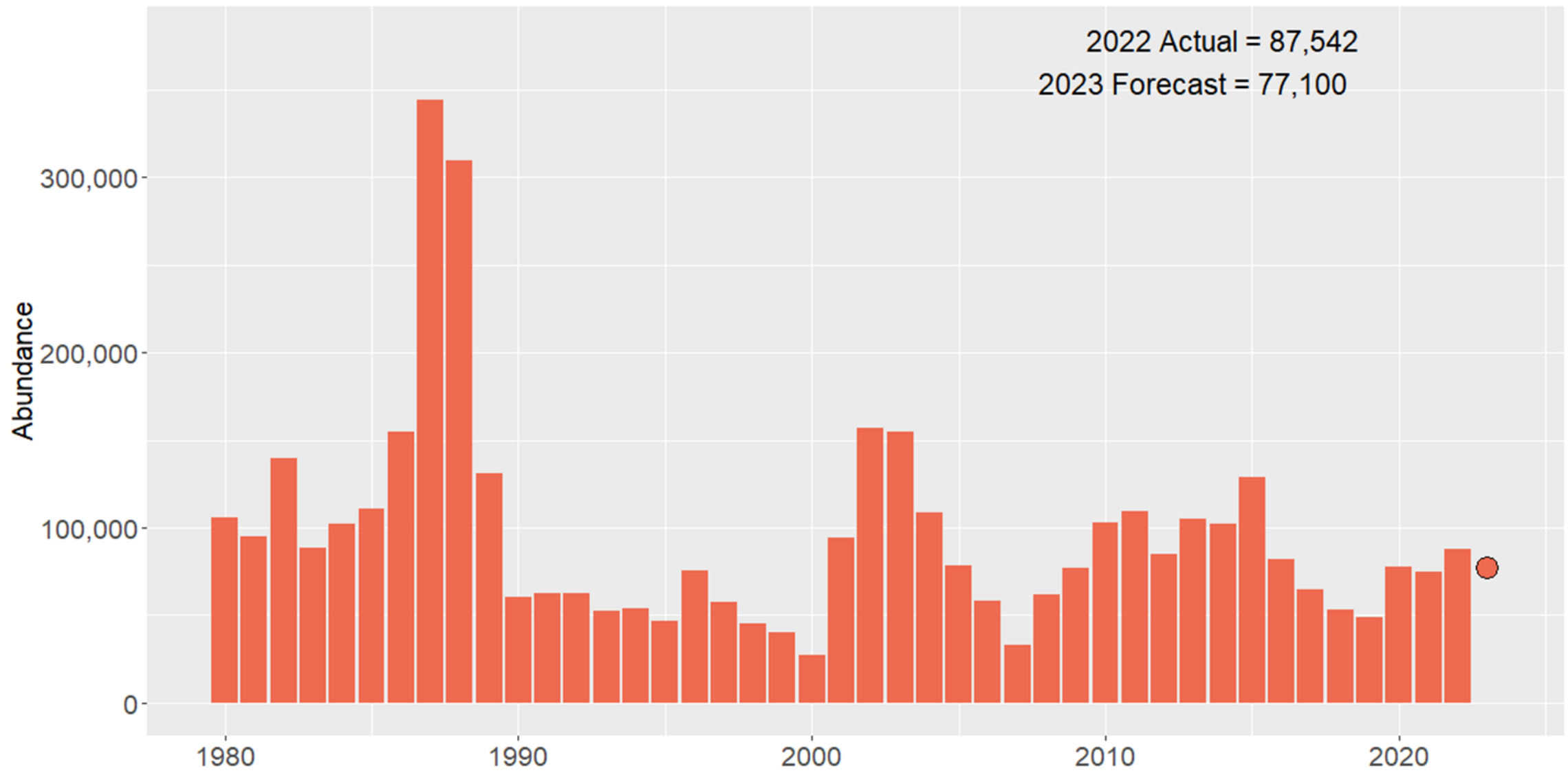
Columbia River Fall Chinook



Upriver Bright Fall Chinook and Snake River Wild



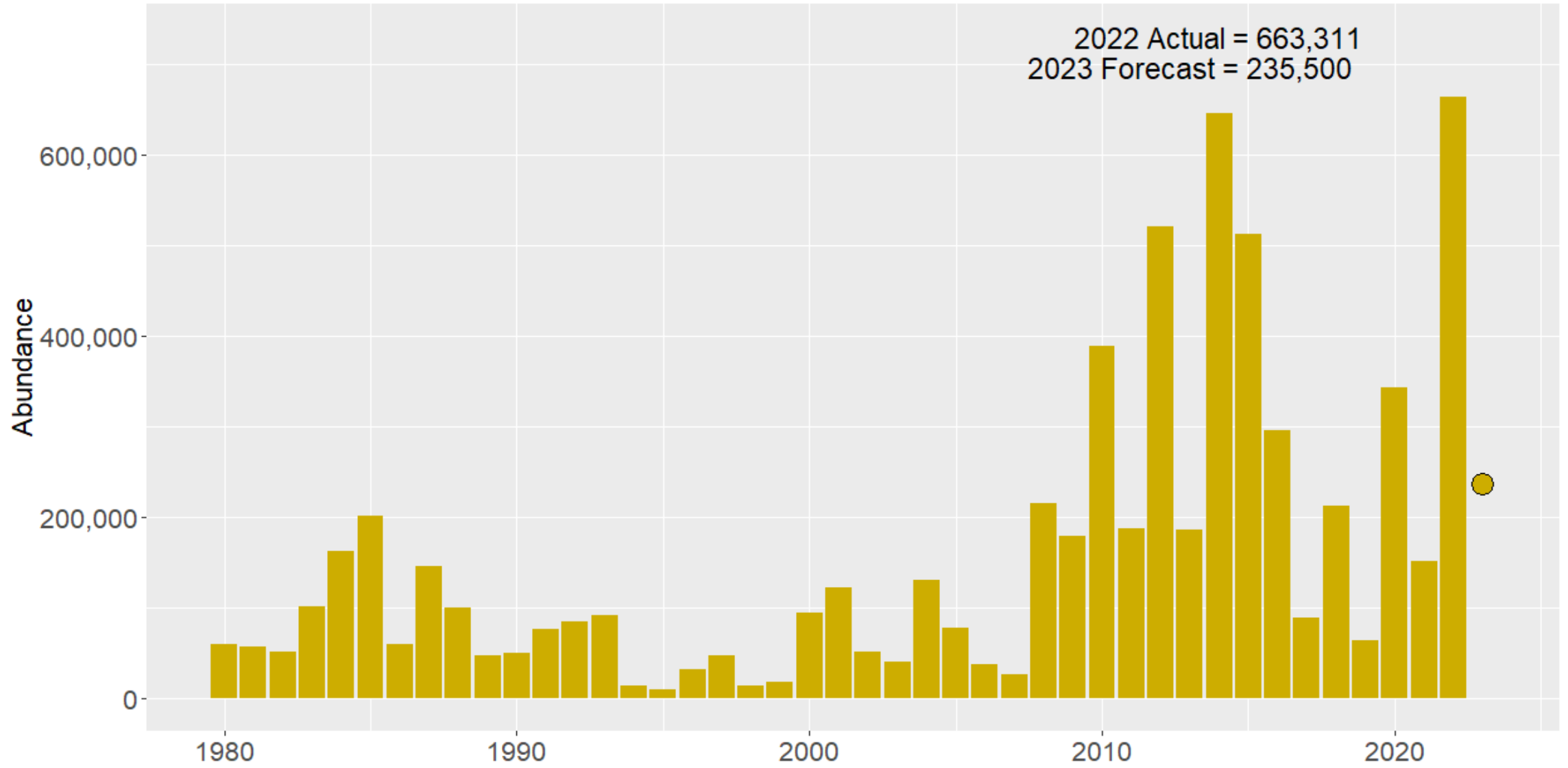
LRH Fall Chinook





Sockeye

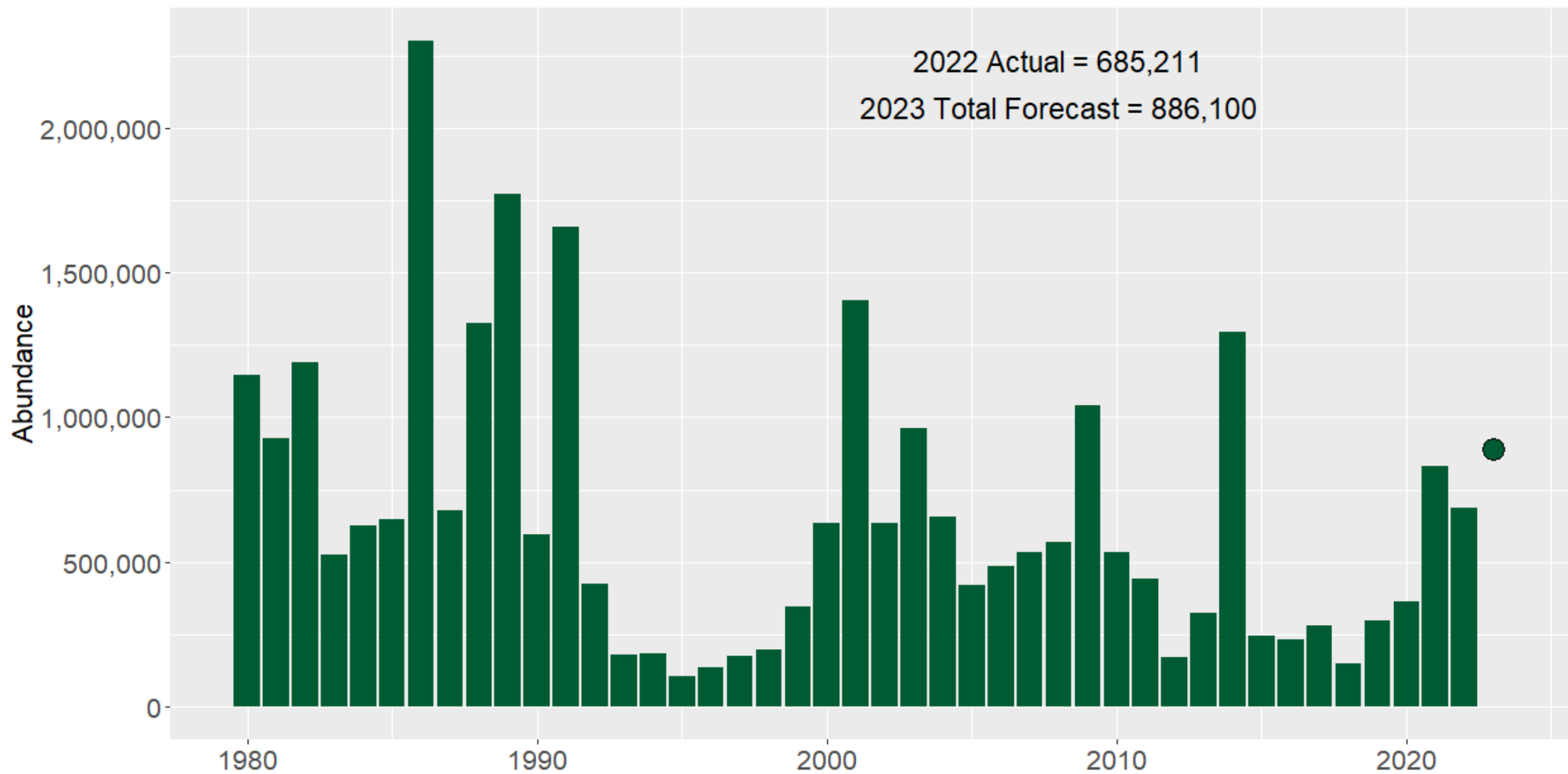
Columbia River Sockeye



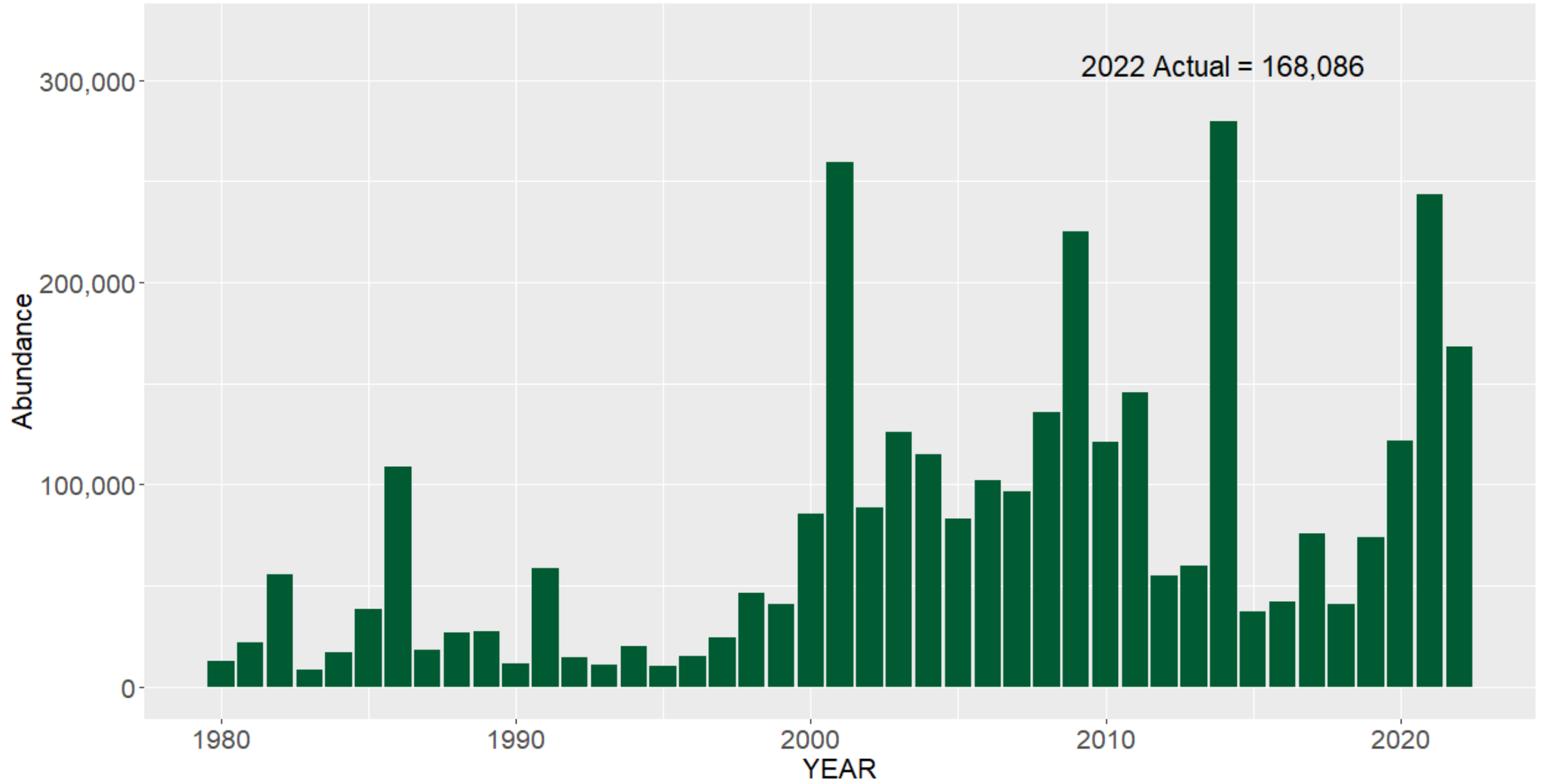


Coho

Columbia River coho - ocean abundance



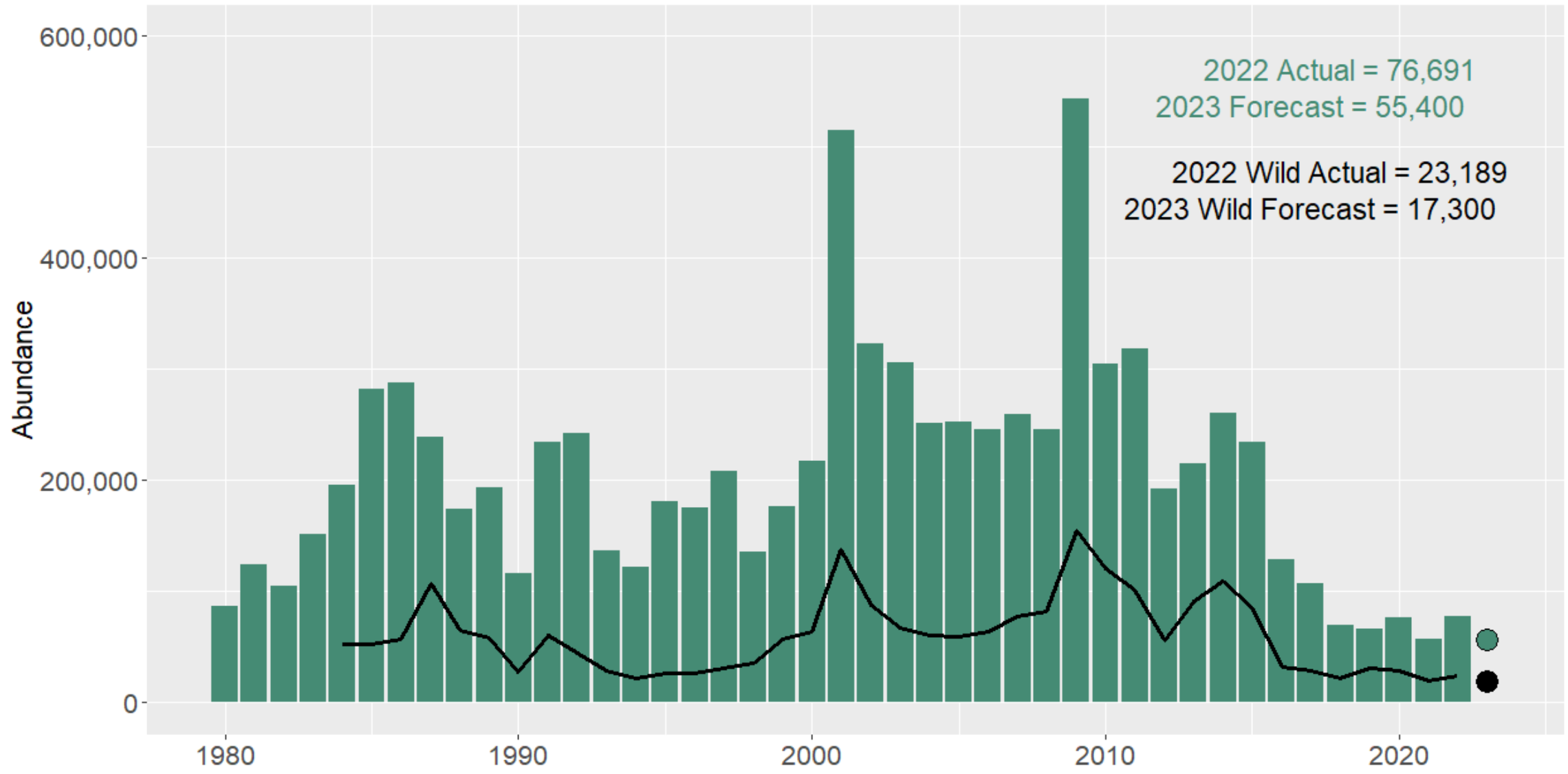
Upriver coho passage - Bonneville Dam



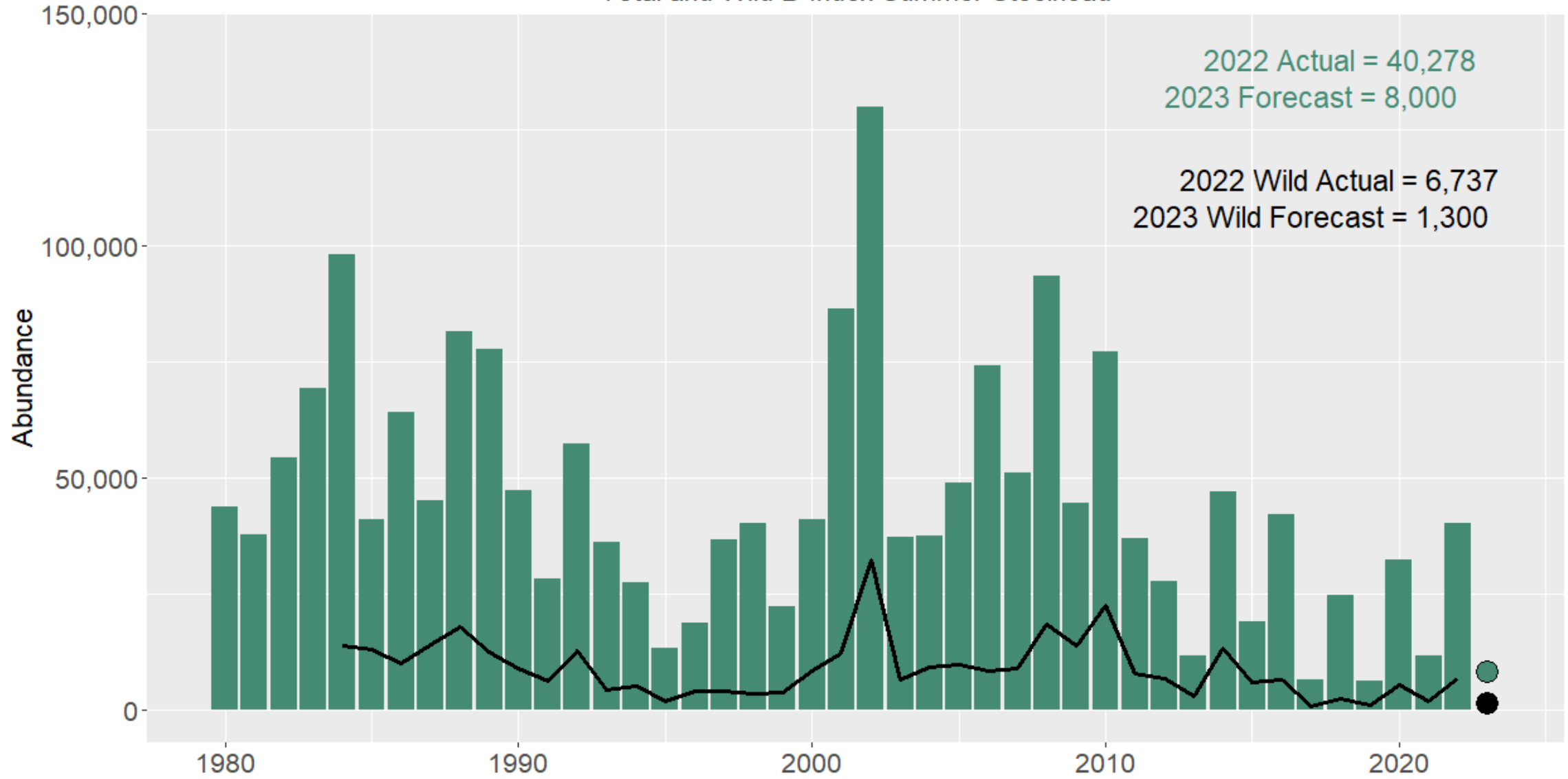


Steelhead

Total and Wild A-Index Summer Steelhead

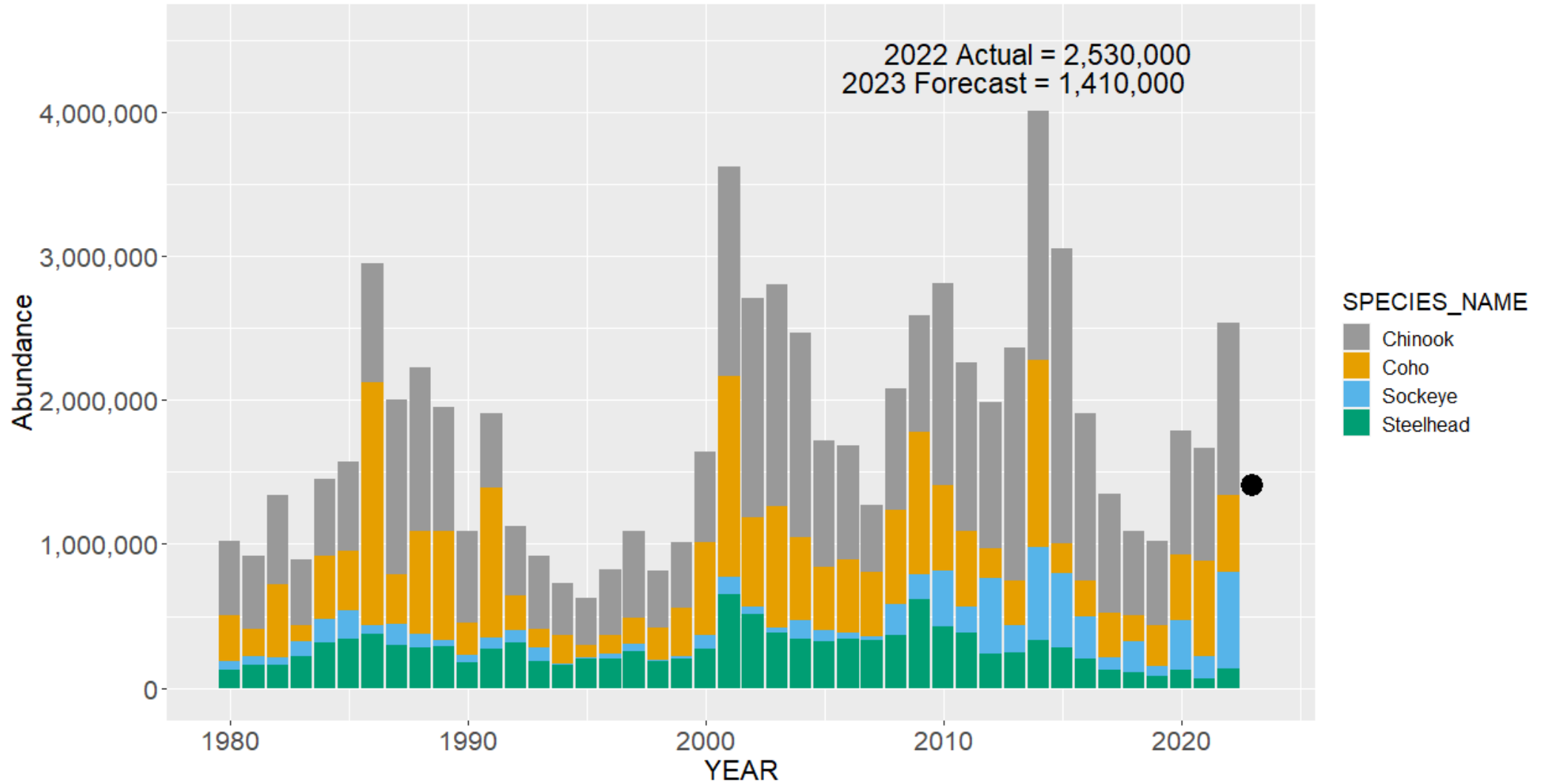


Total and Wild B-Index Summer Steelhead



Total salmonid returns to the Columbia River

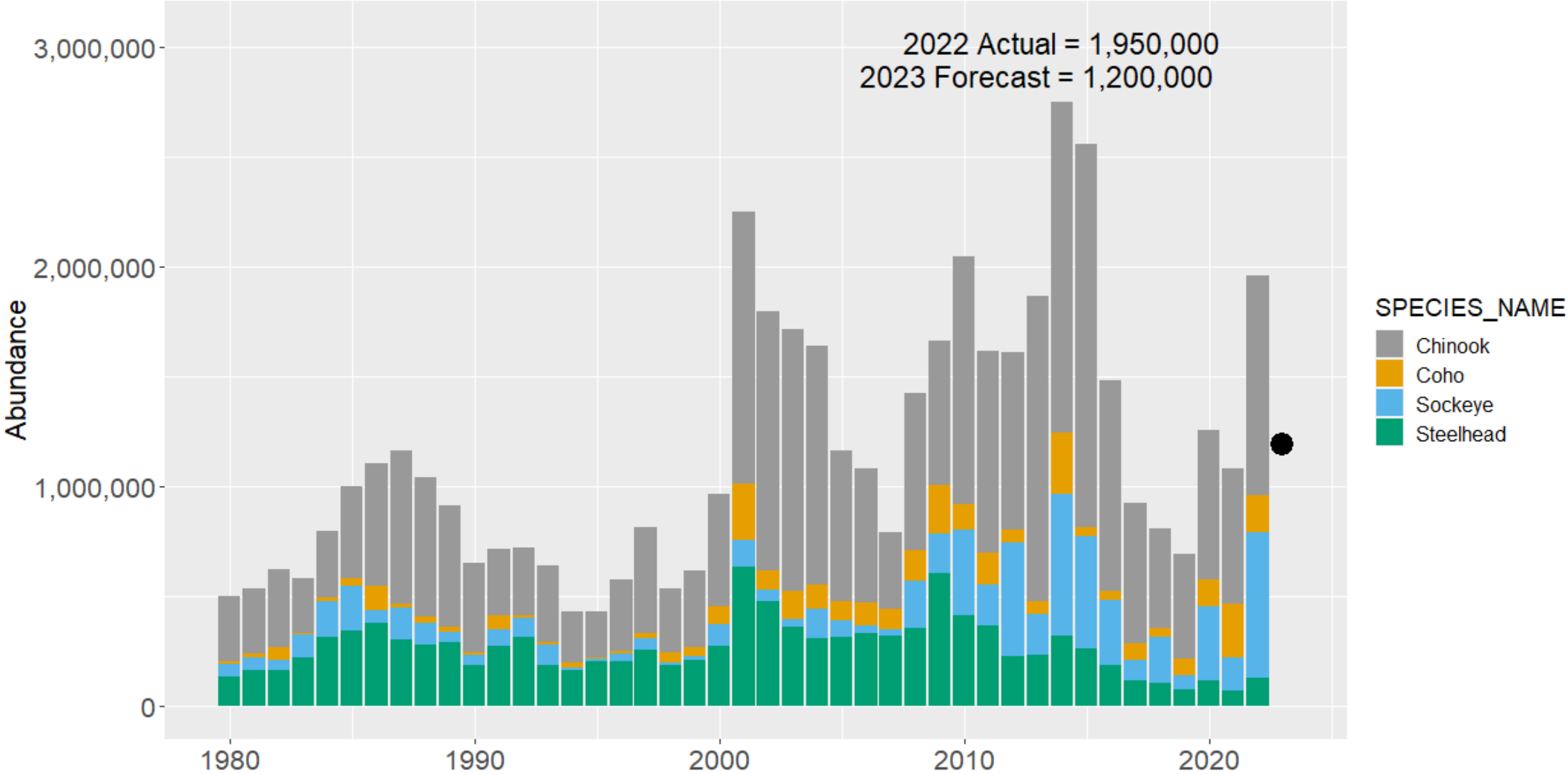
Columbia River Salmonids



Columbia Basin Partnership Goals: 2,603,600 (low); 7,724,600 (high)

Upriver Salmonids

2022 Actual = 1,950,000
2023 Forecast = 1,200,000



Stock Highlights

- Upriver Spring Chinook return is trending upwards
- Upriver summer steelhead returns are trending downward
 - Due to poor forecasts, steelhead-directed fisheries were constrained
- Sockeye return was much larger than forecast in 2022
- For 2023, coho, sockeye and steelhead forecasts are all less than actual returns in 2022, largely the reason for the total salmon and steelhead return forecasted at ~1 million less than last year's return.

Connect with us!

- We are continually updating our Columbia River Fisheries and Management webpages with new information:

[Columbia River fisheries and management | Washington Department of Fish & Wildlife](#)

[ODFW Columbia River Fisheries Action Notices \(state.or.us\)](#)

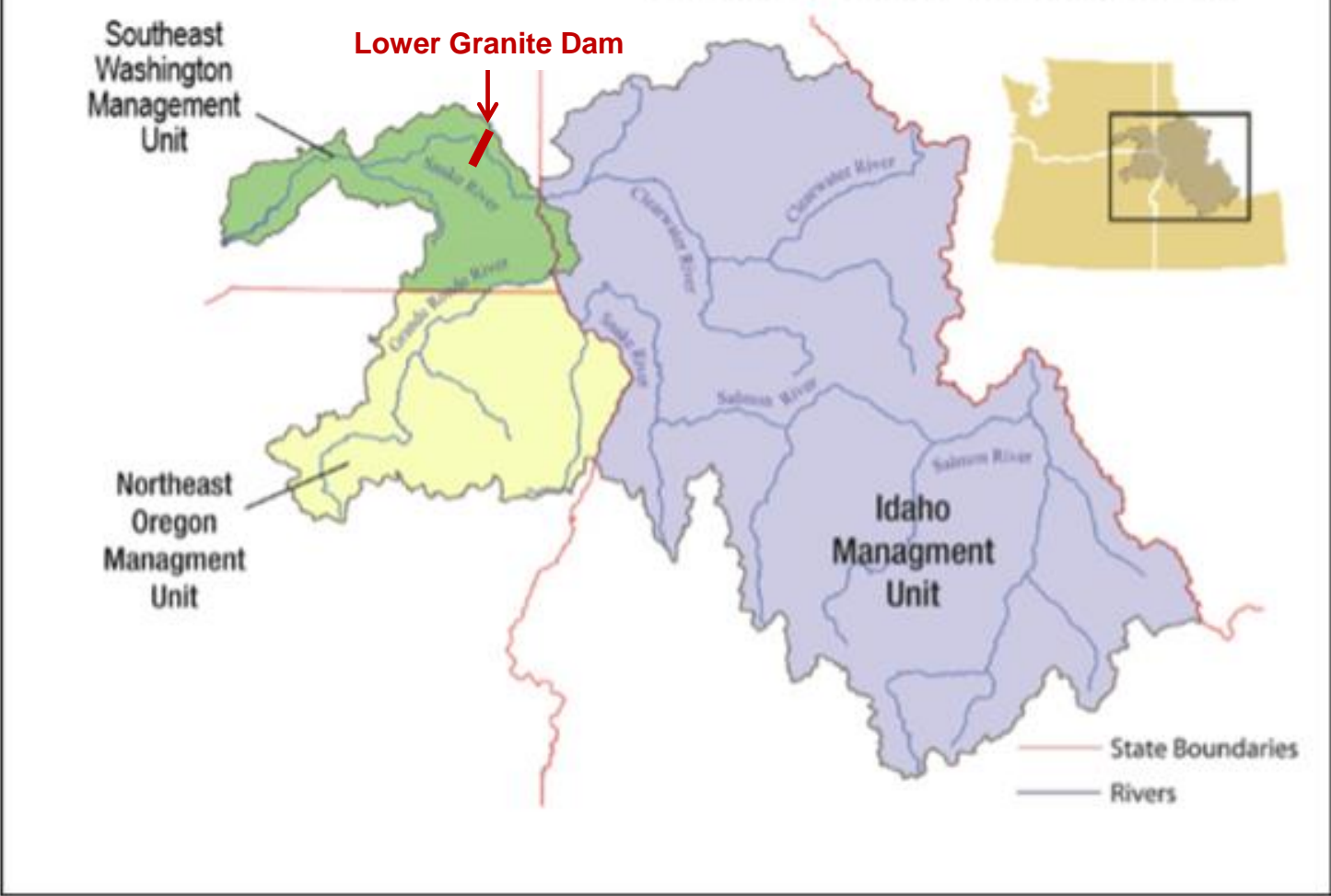
- You can sign up for our Columbia River Fishery Notices e-mail list serv to receive info. on Compacts and joint state hearings, joint state reports, and action notices regarding fisheries in the mainstem Columbia River:

[WDFW mailing lists | Washington Department of Fish & Wildlife](#)

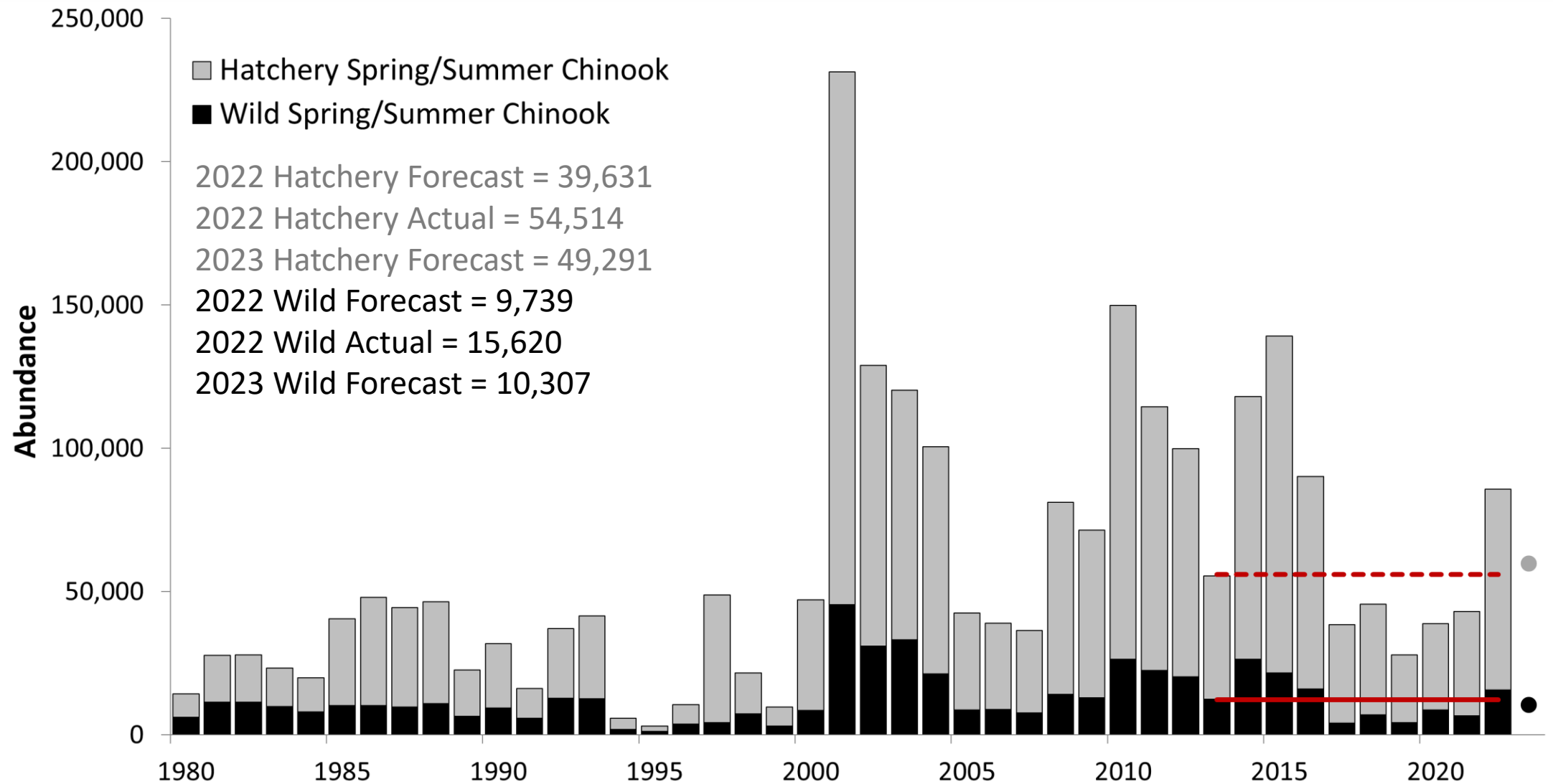
2022 Returns and 2023 Forecasts for the Snake River Basin



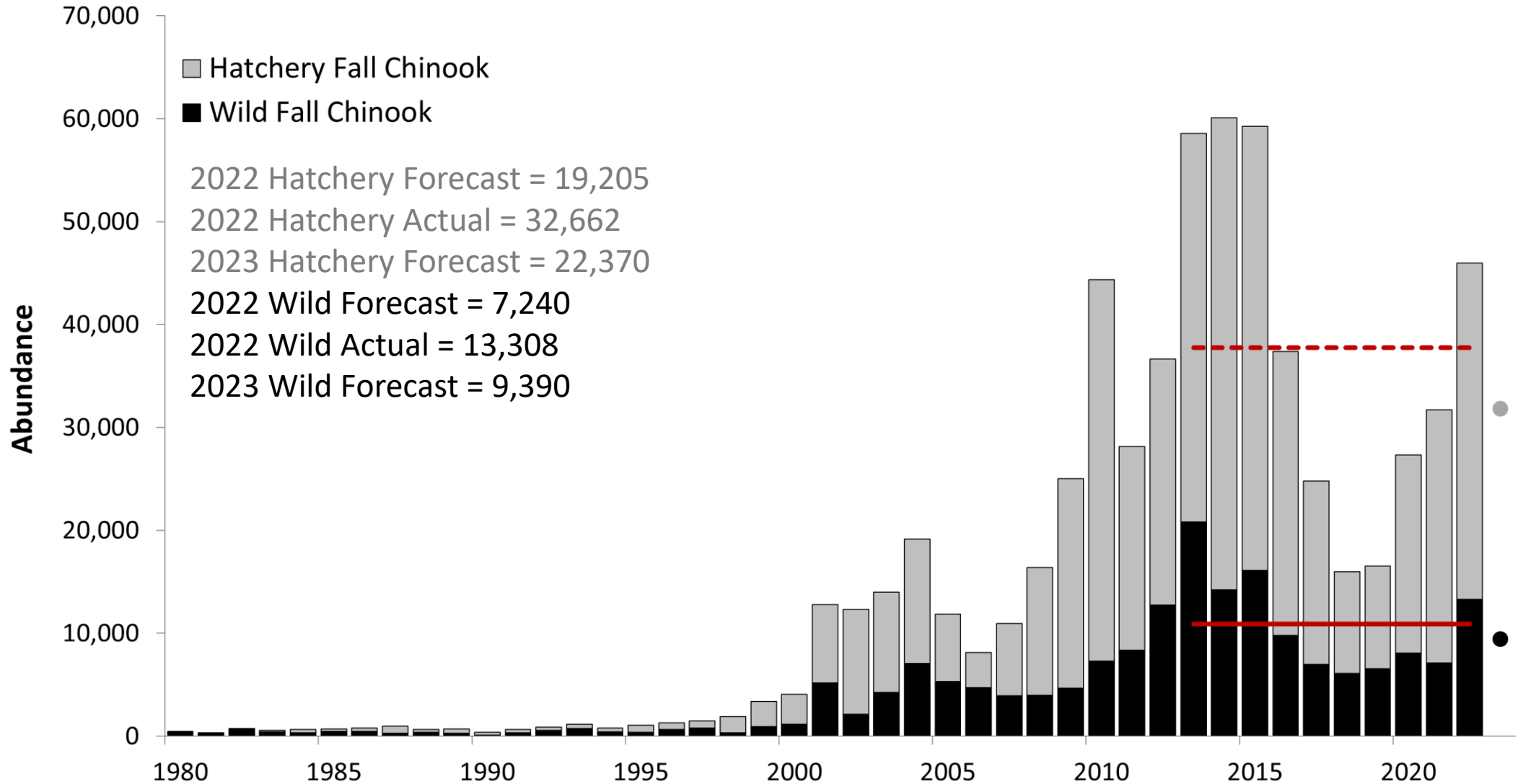
Snake River Recovery Plan Management Unit Boundaries



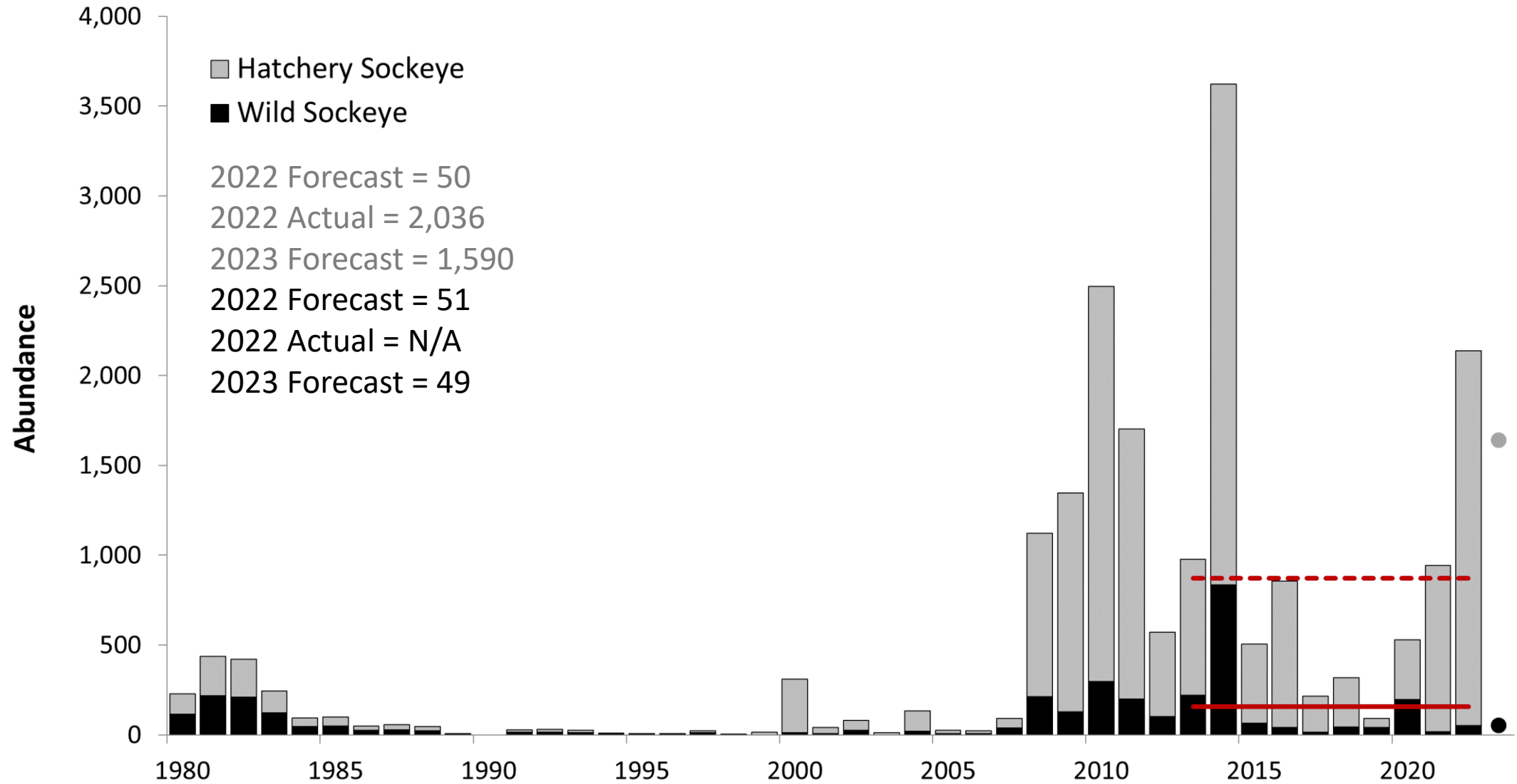
Snake River spring/summer Chinook salmon at Lower Granite Dam



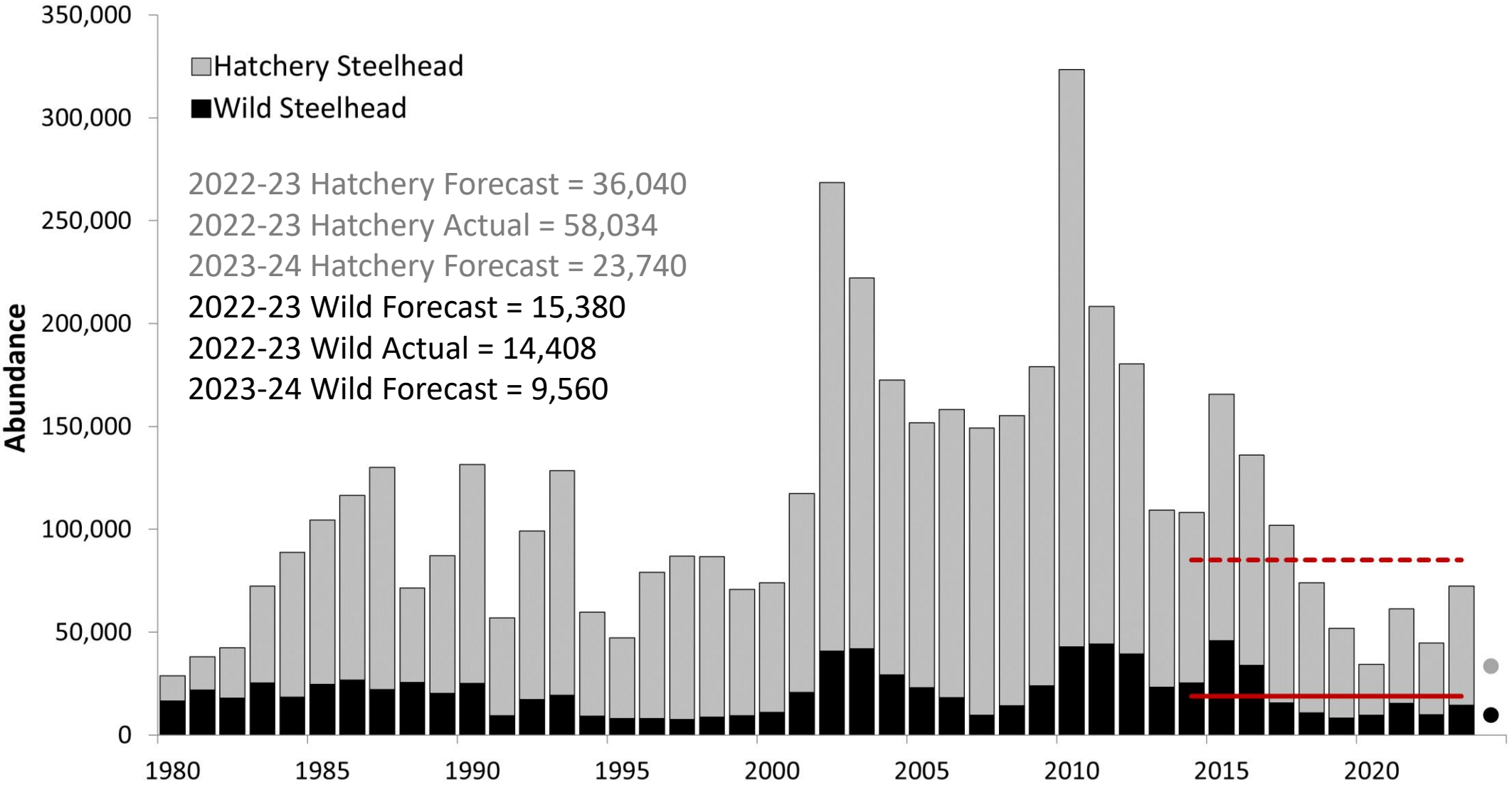
Snake River fall Chinook salmon at Lower Granite Dam



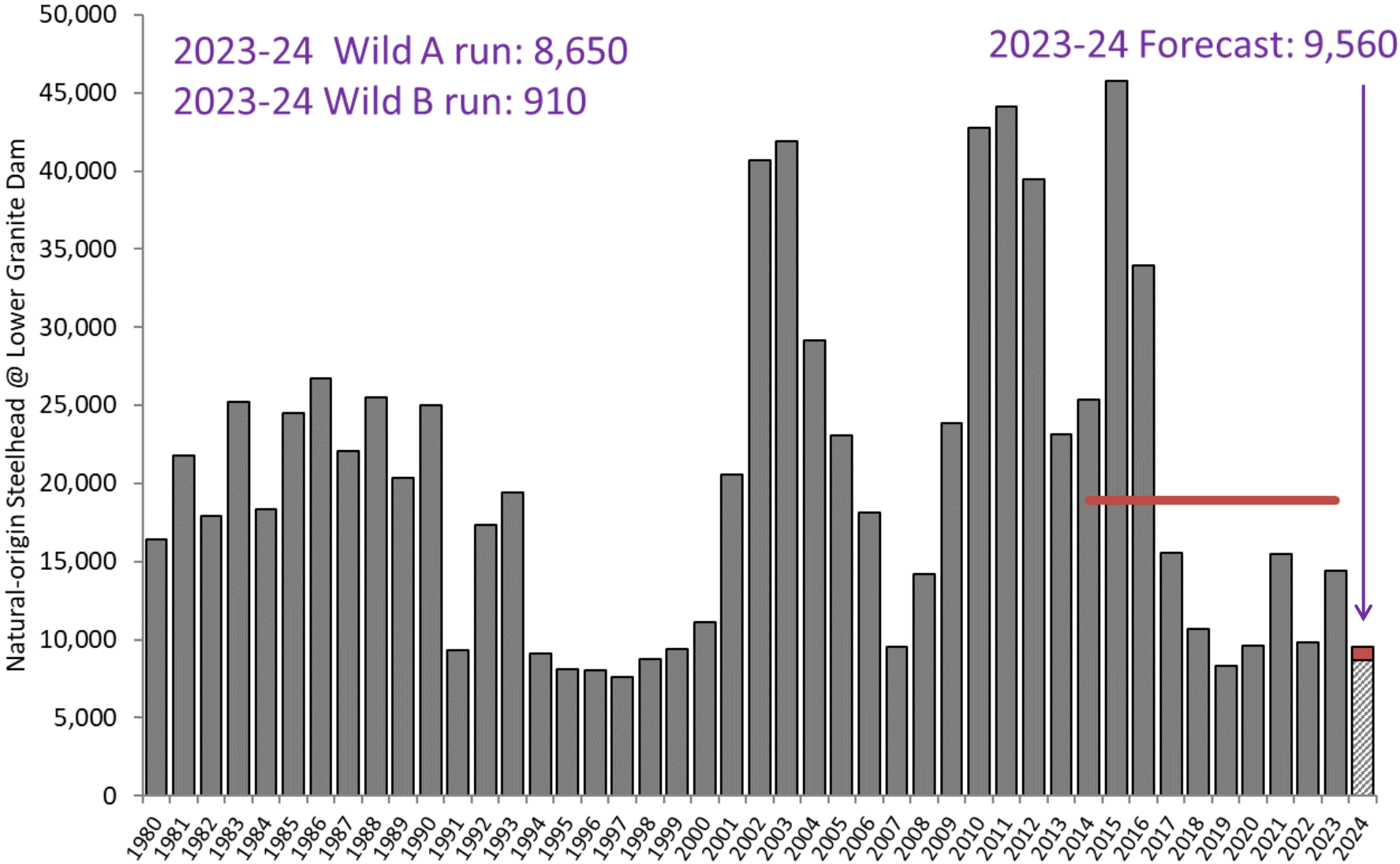
Snake River sockeye at Lower Granite Dam



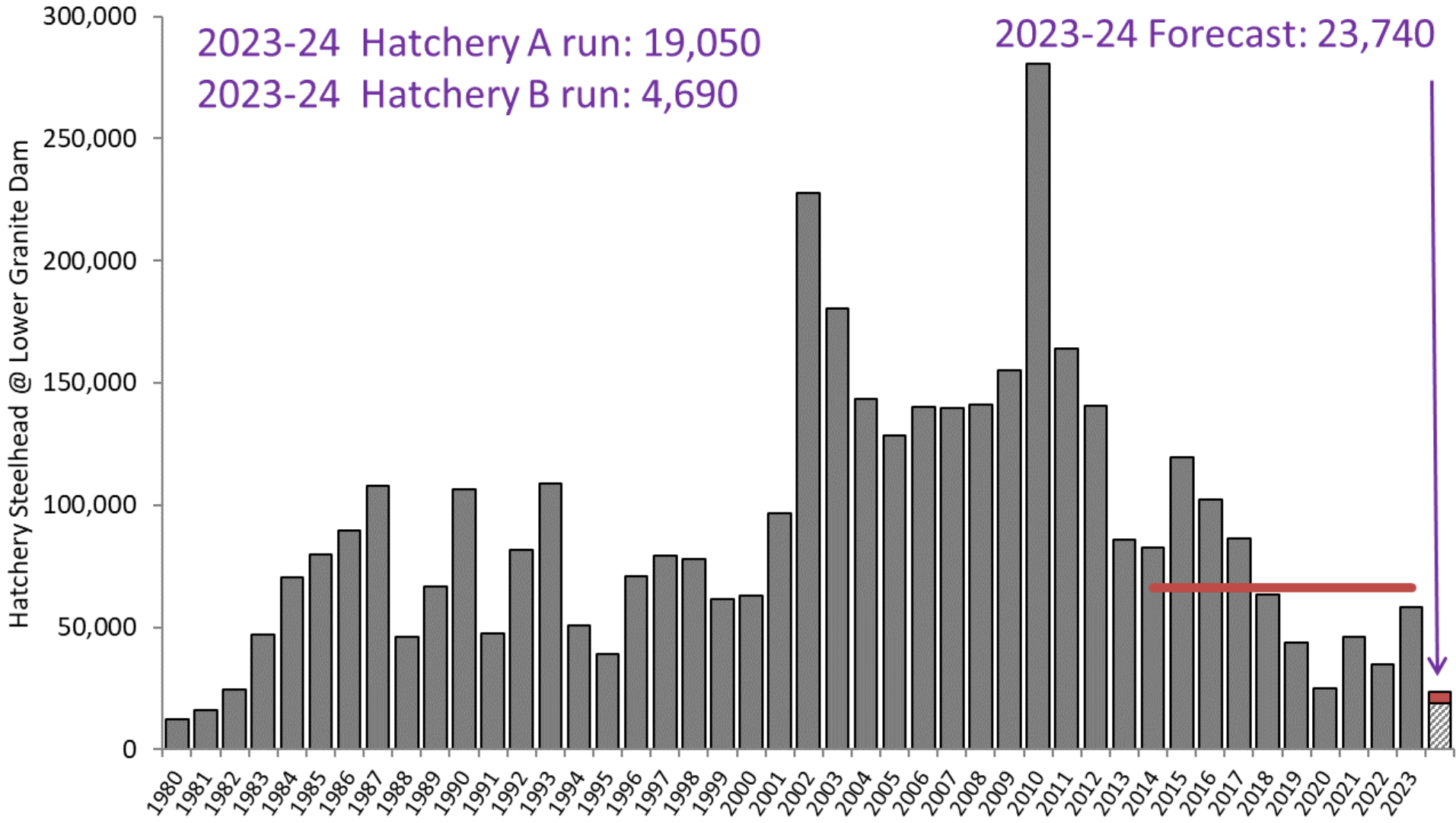
Snake River steelhead at Lower Granite Dam



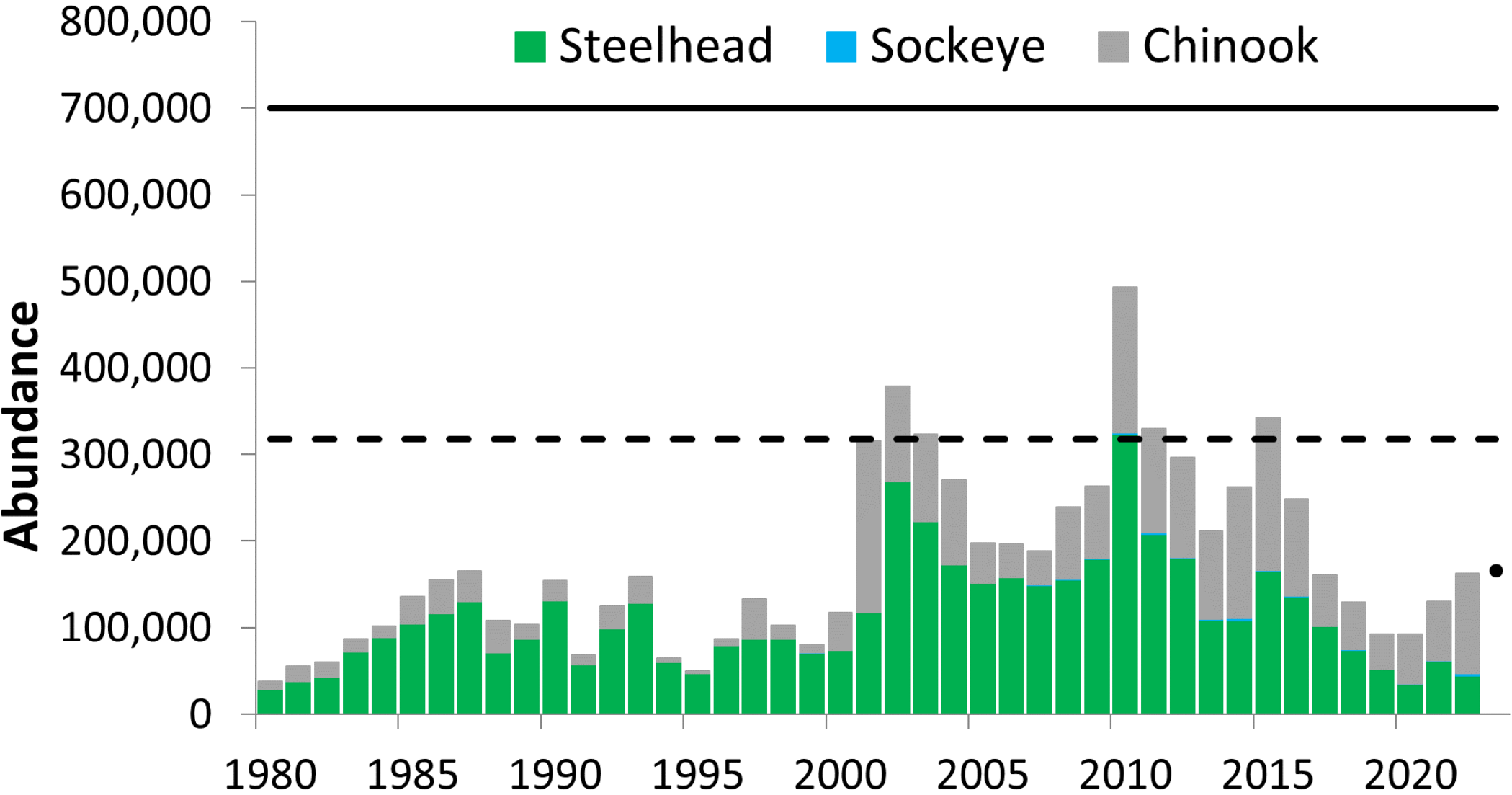
Snake River wild steelhead at Lower Granite Dam



Snake River hatchery steelhead at Lower Granite Dam



Salmonids at Lower Granite Dam



Stock Highlights

- Snake River Chinook and Sockeye returns are trending upwards
- 2023 forecasted salmon returns lower than 2022 actual returns but above 2022 forecasts
- 2023-2024 Snake River summer steelhead forecast lowest ever
- 2023 salmonid return to Lower Granite Dam remains below CBP goals

A large fish with white spots, likely a trout or salmon, is swimming over a rocky riverbed. The fish is positioned in the upper right quadrant of the frame, facing right. The riverbed is composed of numerous smooth, rounded stones of various sizes and shades of gray and brown. The water is clear, and the overall scene is captured in a natural, slightly overcast lighting. The image has a dark green overlay, and the word "Questions?" is written in white, sans-serif font across the middle of the image, underlined.

Questions?
