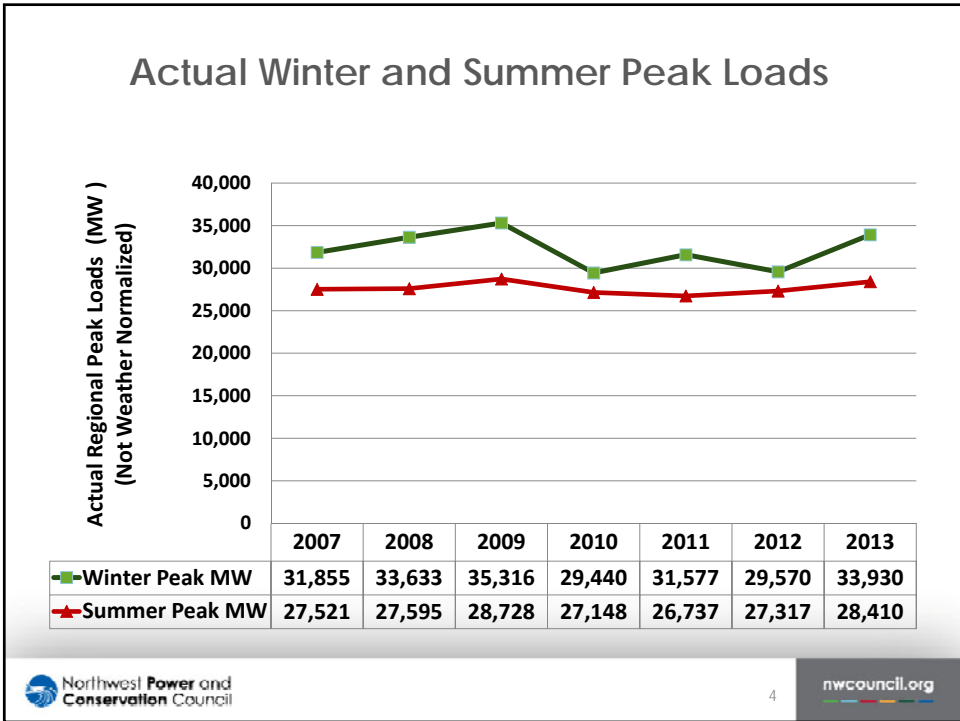
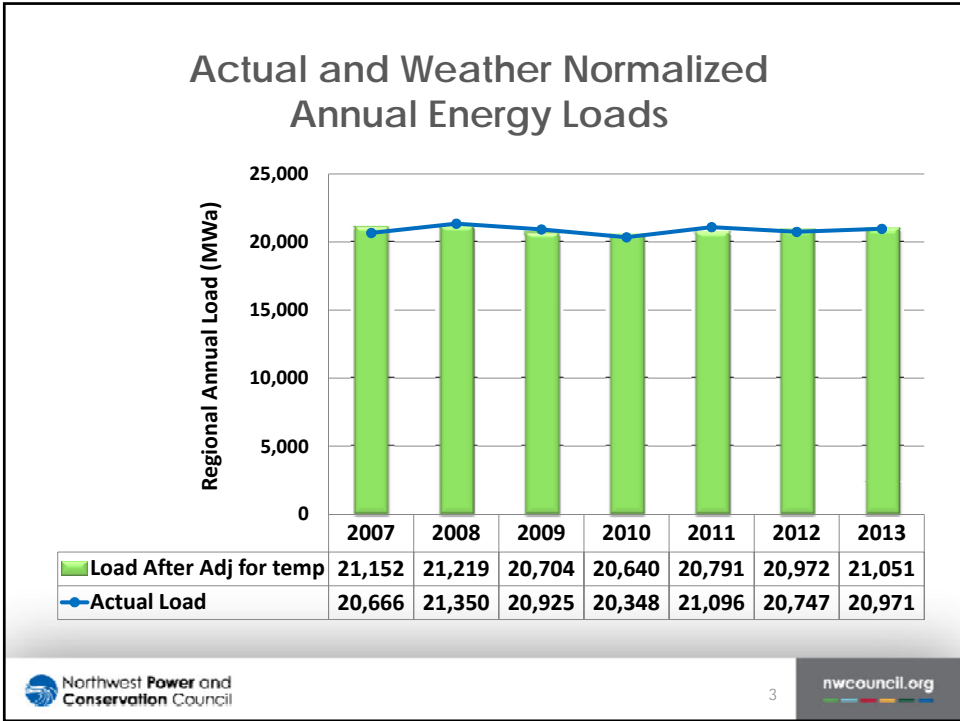


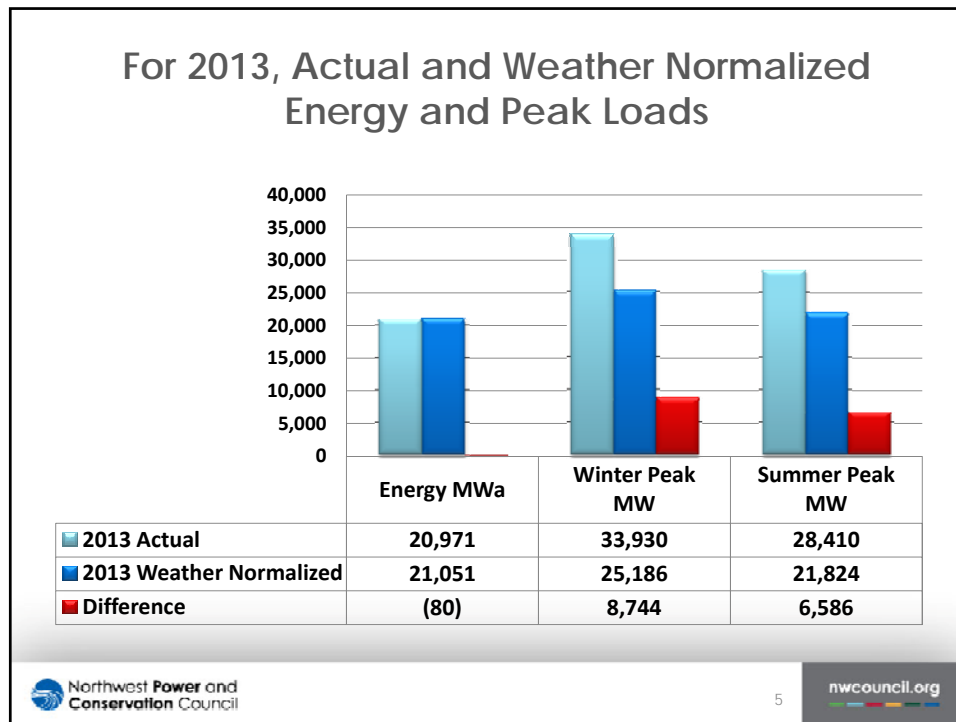
Resource Adequacy Assessment Forecast of Hourly Regional Loads For 2020


Massoud Jourabchi
RAAC Technical Meeting
October 9, 2014

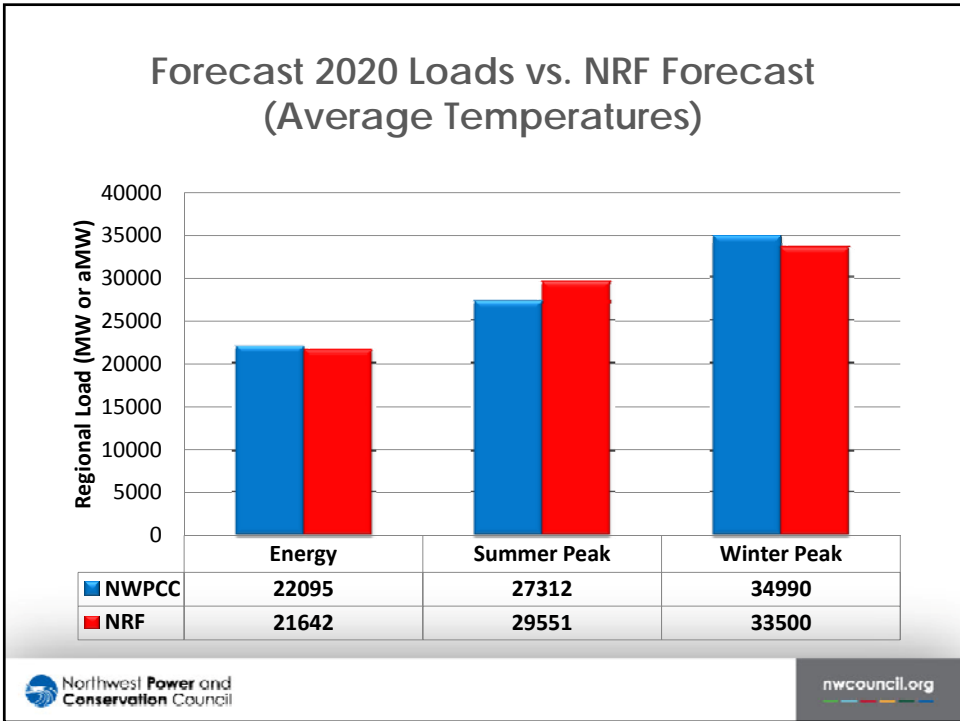
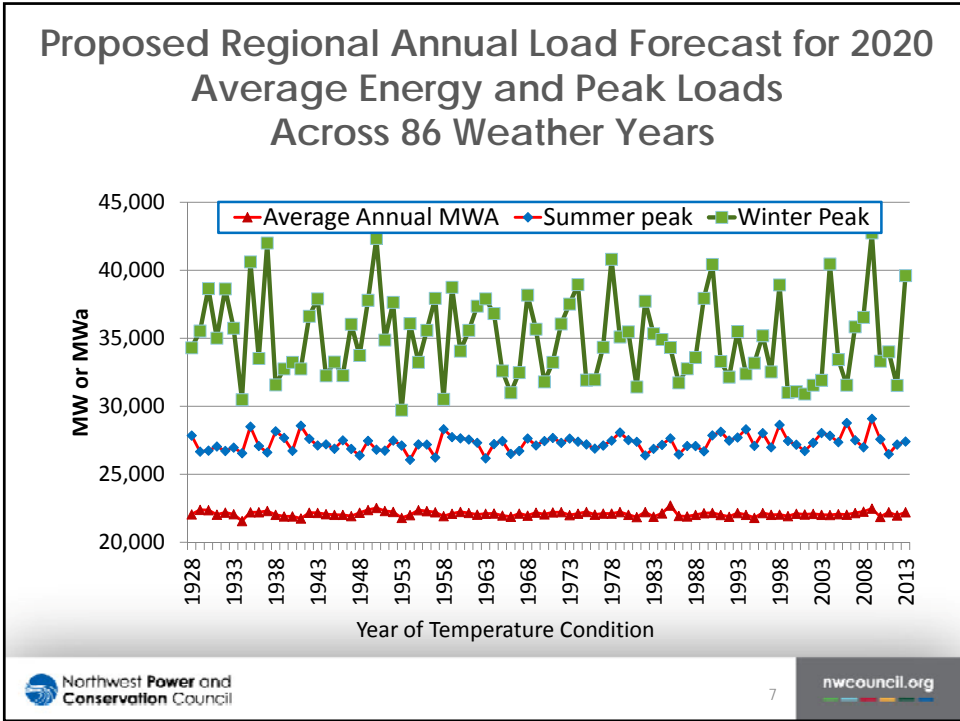
Today's Topics

- Actual and Weather-Normalized Loads for 2007-2013
- Hourly Load Forecast for 2020
- Comparison to NRF
- Southern Idaho Loads





- ### Resource Adequacy Assessment Load Forecast Inputs
- 86 forecasts of hourly regional loads for 2020 operating year (Oct '19 to Sep '20)
 - Each forecast reflects daily average temperatures for years 1929-2013
 - Forecasts for are *net* of Sixth Power Plan energy efficiency targets
- 
nwcouncil.org

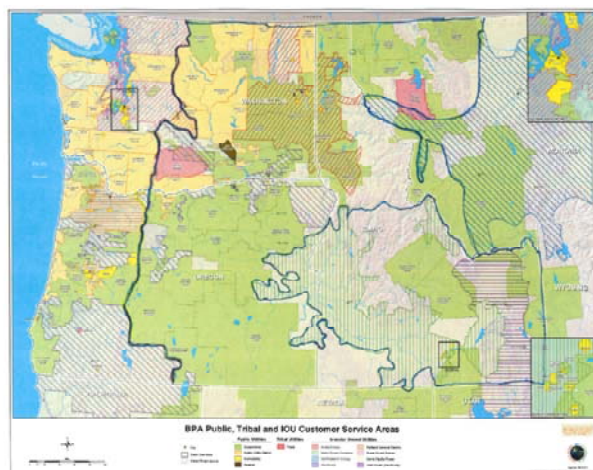


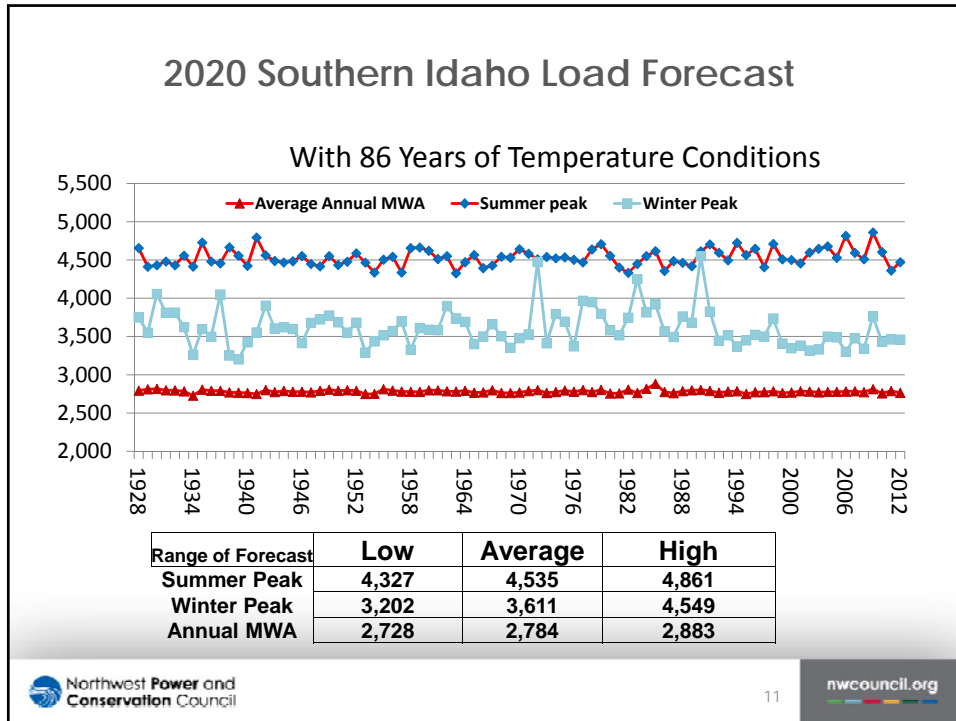
Improvements for the Regional Adequacy Assessment Load Forecast

- **Southern Idaho is modeled specifically**
 - Idaho Power + PacifiCorp East + BPA
- **Washington and Oregon loads will be divided into two zones:**
 - Western Washington and Western Oregon
 - Eastern Washington and Eastern Oregon

PacifiCorp, BPA, and Idaho Power provided hourly load data

Enhancements Planned for RAA Load Forecast





- ### Key Points
- Weather normalized annual energy loads (after energy efficiency) are forecast to grow by 0.48%/year for 2014 – 2020
 - Proposed range of peak loads in 2020
 - Winter 30,000 - 43,000 MW
 - Summer 26,000 - 29,000 MW
- Northwest Power and Conservation Council

 nwccouncil.org