



## Kootenai Tribe of Idaho Fish and Wildlife Program

---

Northwest Power and Conservation Council

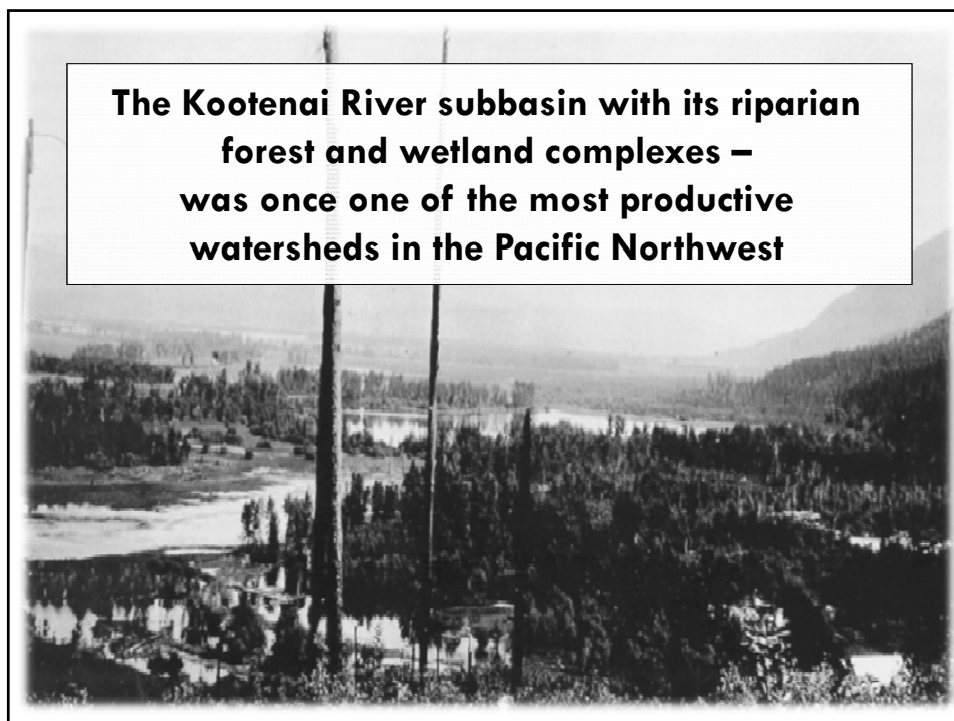
April 2013 Meeting, Spokane, WA

### Kootenai River Subbasin

---

- 9 million acres
- 2 Countries & Ktunaxa Nation
- 2 States, 1 Province
- Hydropower Development
- Multiple endangered Species





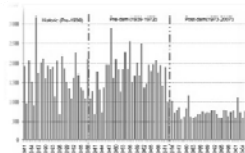
## Libby Dam Construction & Operation Impacts

Altered flow (Spring ½ of historical; Winter increase 300%, lack of flushing flows)

Nutrients trapped (reduced primary productivity)

Loss of side channel, wetlands, and floodplains & connectivity

Bank erosion & land loss



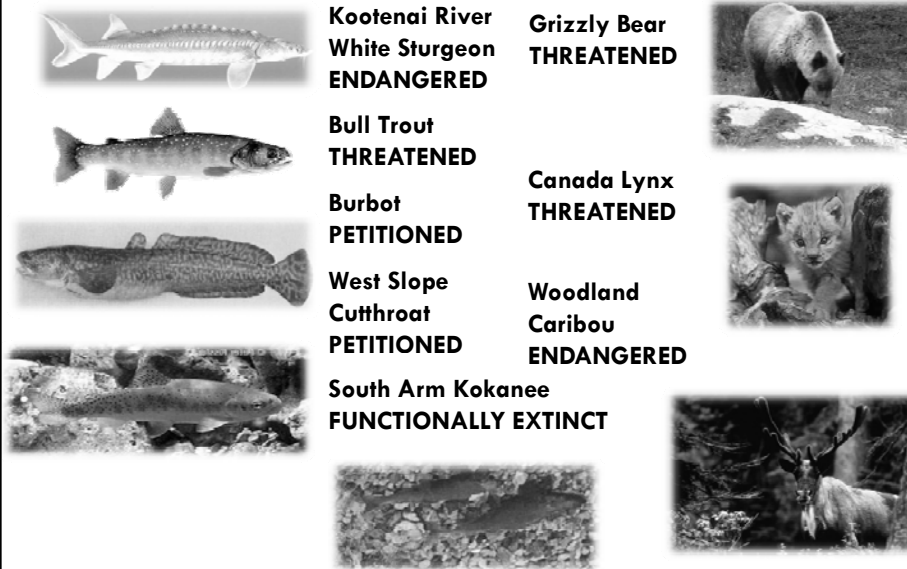
Altered thermal regime (warmer winter, cooler summer temps)

Altered sediment transport, deposition, scour

River response to altered hydraulics (morphology, depth, velocity)

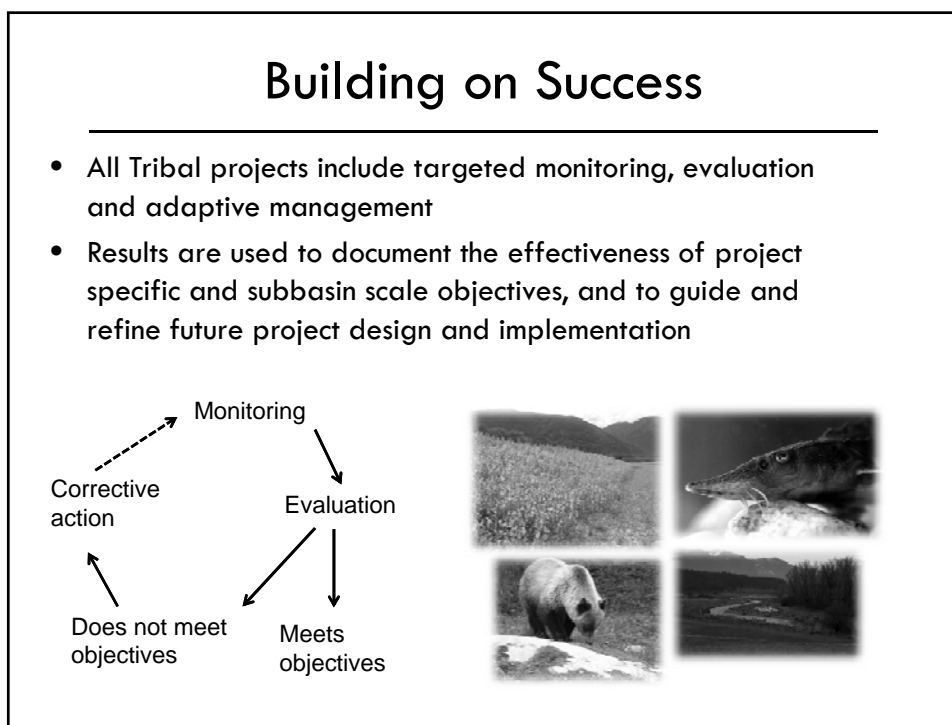
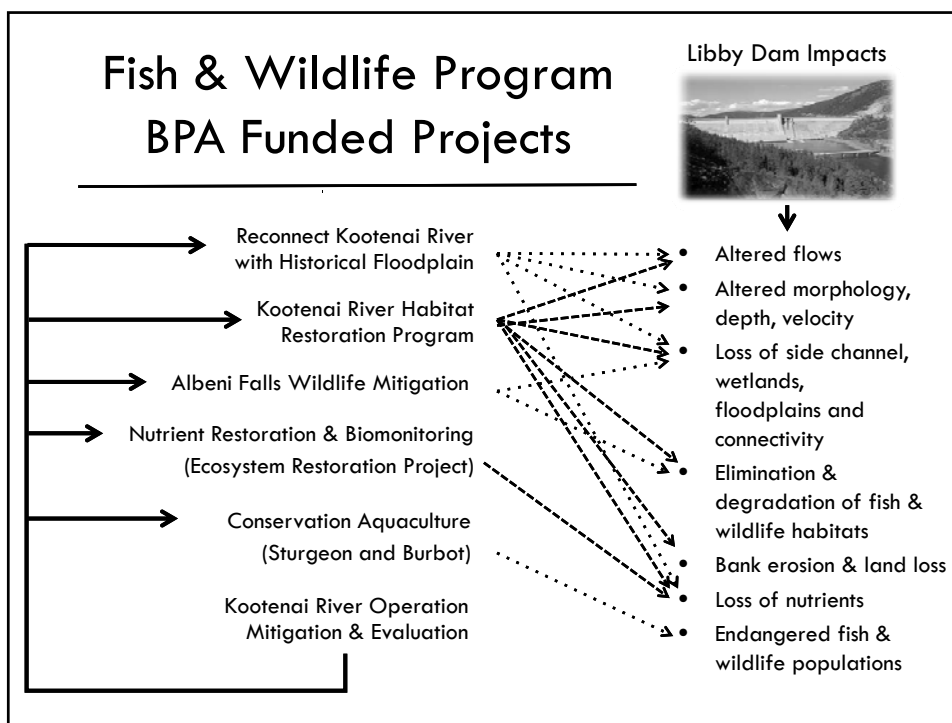
Elimination and modification of critical fish & wildlife habitats

## Decline of Native Fish & Wildlife



## Fish and Wildlife Program

- Addresses Tribal restoration objectives
  - Restore lost subsistence resources
  - Treaty and Trust obligations of Federal government
- Addresses Libby Dam BiOp RPAs
- Addresses USFWS Kootenai Sturgeon Recovery Plan objectives (Endangered Species Act), and KVRI Initiatives i.e., Burbot Conservation Strategy MOU and Wetland & Riparian Conservation Strategy
- Consistent with NPCC Fish & Wildlife Program (Northwest Power Act)
- Addresses Kootenai Subbasin Plan Objectives



## Integrated Ecosystem Based Restoration

---

