

FRANK L. CASSIDY JR.
"Larry"
CHAIR
Washington

Tom Karier
Washington

Gene Derfler
Oregon

Melinda Eden
Oregon

NORTHWEST POWER PLANNING COUNCIL

851 S.W. SIXTH AVENUE, SUITE 1100
PORTLAND, OREGON 97204-1348

JUDI DANIELSON
VICE CHAIR
Idaho

Jim Kempton
Idaho

Fax:
503-820-2370

Phone:
503-222-5161
1-800-452-5161

Internet:
www.nwccouncil.org

Ed Bartlett
Montana

John Hines
Montana

January 7, 2003

MEMORANDUM

TO: Council Members

FROM: Lynn Palensky and Brian Allee

SUBJECT: Umatilla/Willow Subbasin Planning Contract

Proposed Action

Staff recommends that the Council authorize the Executive Director to negotiate a contract with the Confederated Tribes of the Umatilla Indian Reservation (CTUIR) for development of the Umatilla/Willow Subbasin Plan (Plan) as approved by the Oregon Subbasin Planning Coordination Group (Group) (see attached letter). The total projected cost of completing this work is not to exceed \$219,661.

Background

The CTUIR will be the contracting agent for the development of the Plan. CTUIR is working under the guidance of the Umatilla/Willow Core Partnership (Core Partnership). The Core Partnership was organized by basin management agencies to establish a locally led and collaborative process for cooperating stakeholders, private citizens, public organizations, local, tribal, federal and state governments in developing a comprehensive subbasin plan. The Core Partnership operates under a Memorandum of Agreement signed by six organizations. The final plan will be submitted to the Council for adoption into the Fish and Wildlife Program and to the Oregon Watershed Enhancement Board for consideration and adoption by OWEB under state statute. *The proposed workplan, budget and MOA which have been sent to you electronically, are available on the Council's website at www.council.org/news/agenda.htm.*

Proposed Schedule and Budget

The Umatilla/Willow workplan proposes to submit a final subbasin plan to the Council in April 2004. The Group has approved the funding allocation for the Umatilla/Willow workplan, which is not to exceed \$219,661 for FY03/04.

January 7, 2002

Lynn Palensky
Subbasin Planning Coordinator, NWPPC
851 SW Sixth Avenue, Suite 1100
Portland, OR 97204-1348

The Confederated Tribes of the Umatilla Indian Reservation, as fiscal agent for the Umatilla/Willow Subbasin Core Partnership, submitted a work plan for subbasin planning in the Umatilla Subbasin (including Willow Creek) to the Oregon Subbasin Planning Coordination Group (OSPCG) for review before forwarding it to the Northwest Power Planning Council.

The work plan has been reviewed and approved by both the Oregon Subbasin Planning Project Manager and the OSPCG. The Project Manager and the OSPCG join the Confederated Tribes of the Umatilla Indian Reservation in requesting Northwest Power Planning Council approval of this work plan.

We appreciate the prompt attention by the Council and look forward to working together to complete the subbasin planning process in the Umatilla Subbasin.

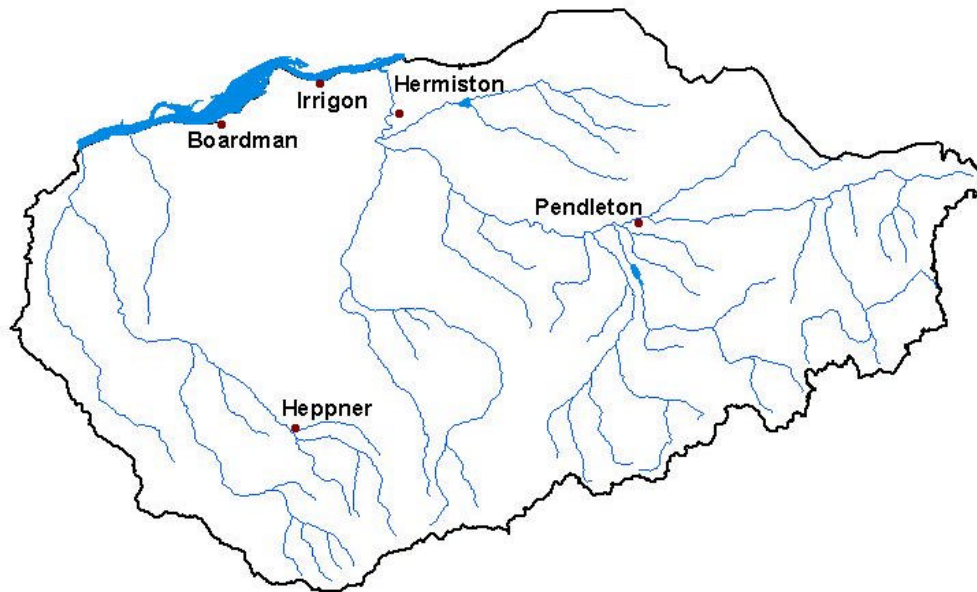
Sincerely,

Gene Derfler
Oregon Member
Northwest Power Planning Council

Melinda S. Eden
Oregon Member
Northwest Power Planning Council

Attachments

Umatilla / Willow Subbasin Workplan



Subbasin Planning Request for Funding

January 6, 2003

APPLICATION CERTIFICATION AND TRANSMITTAL

To: Northwest Power Planning Council
851 SW Sixth Avenue, Suite 1100
Portland, OR 97204
Attn: Contracts Officer

Thru: Oregon Subbasin Planning Coordination Group
Contact Person: Lynn Youngbar

From: Confederated Tribes of the Umatilla Indian Reservation, as agent for the Umatilla / Willow Subbasin Core Partnership
P.O. Box 638
Pendleton OR 97801
Contact Person: Gary James, Program Manager Fisheries Program
Phone: 541-966-2371

Request:

On behalf of the Oregon Subbasin Planning Coordination Group, the Confederated Tribes of the Umatilla Indian Reservation (CTUIR) will serve as the fiscal agent for the Umatilla / Willow Subbasin Core Partnership. CTUIR requests contract financial assistance from the Northwest Power Planning Council for development of the Umatilla / Willow Subbasin Plan in accordance with such funding conditions as may be required by the Council. This application is prepared with full knowledge and understanding of the Council's practices and procedures described in the attachments 1-3 of the request for funding materials provided.

Project Name: Umatilla / Willow Subbasin Plan
Subbasin: Umatilla & Willow
Province: Columbia Plateau

Certification:

I certify that to the best of my knowledge, the information provided in this application is true and correct and that the financial assistance requested will be utilized only to carry out the activities described in the attached statement of work.

Authorized Representative _____
Signature Date

Printed Name and Title:

Gary James, Program Manager, CTUIR DNR Fisheries Program

APPLICANT/ORGANIZATION INFORMATION

Province name: Columbia Plateau

Subbasin name: Umatilla & Willow

Organization name: Confederated Tribes of the Umatilla Indian Reservation

Type of organization: Tribal

Mailing Address: P.O. Box 638

City/Town: Pendleton

State, Zip: Oregon 97801

Telephone: 541-276-4109

Email address: garyjames@ctuir.com

FAX: 541-966-2397

Organization purpose and legal status: Tribal government

Contract contact information:

Project Contract Administration Representative:

Michelle Thompson, Manager-Administrative Operations, CTUIR-DNR Administration

Mailing Address: P.O. Box 638

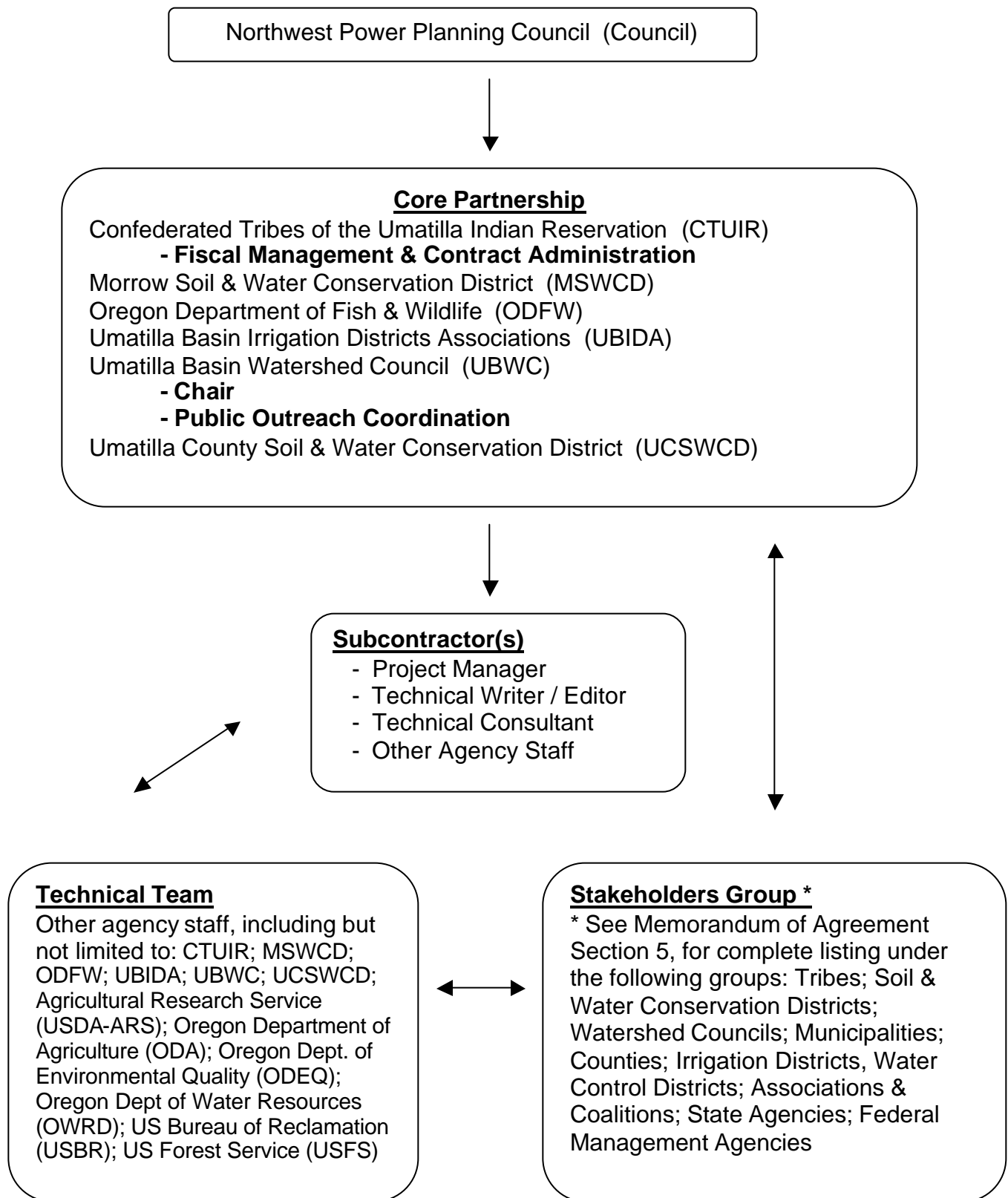
City/Town: Pendleton

State, Zip: Oregon 97801

Telephone: 541-966-2323

Email address: michellethompson@ctuir.com

Figure 1. Umatilla / Willow Subbasin Organizational Structure



SUMMARY DESCRIPTION OF PROJECT

Overall Approach

Purpose. The Core Partnership was organized by basin management agencies to establish a locally led and collaborative process for cooperating stakeholders, private citizens, public organizations, local, tribal, state and federal governments in developing a comprehensive fish and wildlife restoration plan for the Umatilla / Willow subbasin. Located in the Columbia Plateau in Northeastern Oregon, the subbasin planning area covers most of Umatilla and Morrow counties and consists of the Umatilla River and the Willow Creek subbasins. The Umatilla River subbasin is 2,545 square-miles in size, with nearly 85% privately owned and about 9% owned by the federal government. The present day boundary of CTUIR (172,000 acres) makes up the remaining 6% of the subbasin. Willow Creek subbasin (which includes a portion of the Mid Columbia-Lake Wallula subbasin) totals 1,352 square-miles and is over 90% privately owned. Around 9% is owned by public agencies, while the remaining 1% is owned by the State of Oregon. Altogether, the Umatilla / Willow subbasin is home to more than 340 wildlife species and over 30 species of fish, including four indigenous species that qualify as Sensitive, Threatened or Endangered under either the federal ESA or Oregon's Sensitive Species Rule.

This comprehensive restoration plan for the Umatilla / Willow Subbasin (subbasin plan) will help to define goals, objectives and strategies for fish and wildlife for a 10-15 year horizon. The subbasin plan will be submitted to the Council for adoption under the Council's Fish and Wildlife Program, to help direct Bonneville Power Administration (BPA) funding for projects that will enhance, mitigate and protect fish and wildlife populations adversely impacted by the Columbia River hydropower system.

The overall purpose of this planning effort will go beyond the requirements of the Council subbasin planning process. The plan will be used by federal agencies to aid recovery planning for species listed under the Endangered Species Act and will be evaluated for consistency with the Clean Water Act, federal treaty and trust responsibilities with the basin Native American Tribes, and the Council's 2000 Fish and Wildlife Program. The subbasin plan will be submitted to the Oregon Watershed Enhancement Board (OWEB) for consideration and adoption as the goals and priorities for watershed restoration under the state watershed council program. It is intended to be consistent with and to assist in addressing the requirements of the following: the Endangered Species Act (ESA) species recovery plans, the Federal Clean Water Act (CWA), the Oregon Plan for Salmon and Watersheds, Wy-Kan-Ush-Mi Wa-Kish-Wit (Spirit of the Salmon), tribal trust responsibilities and treaty rights, and local land use plans. Additional basin management tools include the Umatilla River Basin Total Maximum Daily Load (TMDL) and Water Quality Management Plan (WQMP), Agricultural Water Quality Management Area Plans, ODFW basin plans and rules, and other laws and regulations. Applicable management documents for anadromous and resident salmonids on federal lands include PACFISH and INFISH.

The Core Partnership also seeks to have the subbasin plan serve as a building block for ESA recovery plans now being developed by the National Oceanic and Atmosphere

Administration, Fisheries (NOAA Fisheries) for listed species of anadromous fish in the subbasin and by the U.S. Fish and Wildlife Service (USFWS) for bull trout. The Core Partnership intends to use the NOAA Fisheries' local recovery plan guidelines in developing the subbasin plan. Local fish and wildlife restoration plans will be developed that will identify and prioritize actions needed to:

- Protect and enhance streamflows to meet water quality standards, instream water rights, fish and wildlife habitat objectives and existing water rights;
- Support research, monitoring and evaluation to guide existing and future restoration and management efforts in the subbasin;
- Support fish and wildlife artificial propagation measures where necessary to achieve population goals;
- Protect and enhance water quality to meet tribal, state and federal standards;
- Maintain and restore the resource land base in the subbasin, consistent with acknowledged comprehensive land use plans, species recovery and the economic viability of the resource-based economy in the subbasin;
- Consider municipal and industrial water needs over the next 50 years; and
- Promote sustainability and conservation consistent with the custom, culture and quality of life in the subbasin.

Organization. Figure 1, above, illustrates the proposed organization and membership for this collaborative effort.

Stakeholders Group: In the *Memorandum of Agreement Umatilla & Willow Creek Basins Core Partnership for Sub-Basin Planning* (MOA), "stakeholder" is defined as persons or entities that reside in, derive their livelihood from, or are involved with business, research or regulatory interests within the Umatilla and/or Willow watersheds. The Stakeholders Group includes representatives from sixty basin organizations, watershed councils, cities, counties, irrigation districts, state agencies and federal land and resource management agencies. The Stakeholders Group will meet throughout the planning process, with all meetings open to the public.

Core Partnership: The Core Partnership is the lead entity for the subbasin planning process. The group consists of six representatives of Stakeholders in the Umatilla and Willow watersheds. They include Confederated Tribes of the Umatilla Indian Reservation (CTUIR), Morrow Soil & Water Conservation District (MSWCD), Oregon Department of Fish & Wildlife (ODFW), Umatilla Basin Irrigation Districts Associations (UBIDA), Umatilla Basin Watershed Council (UBWC), and Umatilla County Soil & Water Conservation District (UCSWCD). All representatives have signed the MOA. UBWC will serve as the Chair of the Core Partnership, while CTUIR will serve as Fiscal Agent,

managing the contract with the Council and contracting for other services as required in preparing the subbasin plan.

Members of the Core Partnership will be the most active group in this subbasin effort. They will take the lead in coordination among the groups and in development of the vision, the biological objectives, and prioritization of subbasin strategies. Regular communication and input between the Core Partnership, the Stakeholders Group, the Technical Team and subcontractors will be maintained. Meetings of the Core Partnership will be held on a regular basis and will be open to the public.

Technical Team: This interdisciplinary team will work under the direction of the Core Partnership; it is comprised of specialists from various basin agencies and entities, as well as members of the Core Partnership. The Technical Team will analyze data and assist in the development of the subbasin plan. They will meet during the development of the assessment and modeling efforts, assist with completing the inventory, and contribute expertise throughout the development of the management plan. All of the Technical Team meetings will be open to the public.

Subcontractor(s): As directed by the Core Partnership, CTUIR will subcontract with a qualified person to be the overall Project Manager. CTUIR will also subcontract with an experienced Technical Writer/Editor to work as principal author of the plan. In addition, CTUIR will subcontract with other agency staff and other technical consultants who might be needed throughout the planning process. The Project Manager will work closely with the Core Partnership, the Technical Team and the Writer/Editor to compile, edit and write the various sections of the subbasin plan. The Project Manager will facilitate the Technical Team meetings and will take the lead in compiling data contributed by agency staff. All meetings of the Core Partnership, Stakeholders Group and Technical Team will be open to the public, and participation by others interested in the subbasin planning effort will be encouraged.

Coordination. The organizational structure of the Core Partnership assures coordination with all of the groups actively working towards fish and wildlife restoration in the Umatilla / Willow subbasin. The participants are committed to building on all of the watershed assessment and planning work that has already been done. The individuals serving on the Core Partnership will ensure that their organizations receive regular updates on the planning process so that as many of their members as possible track developments as they occur. Members of the Core Partnership will participate in all Stakeholders, Technical Team and other public hearings and meetings. They will take the lead in reviewing the subbasin assessment for accuracy, developing the vision and biological objectives and prioritizing strategies. The Project Manager will work closely with the Core Partnership to maintain good communication among all participants, and in coordinating and tracking project tasks.

Technical Assistance. The Core Partnership has established a subbasin Technical Team that will assist in the completion of various products required in the subbasin plan. The Fiscal Agent will contract with ODFW, CTUIR, USFS and other specialists as needed, for assistance with fish and wildlife matters. CTUIR will contract with Mobrand Biometrics, Inc. (Mobrand), The Nature Conservancy (TNC), the Northwest Habitat

Institute and/or other qualified contractor(s) to assist with the Ecosystem Diagnostic and Treatment (EDT), and the Interactive Biodiversity Information System (IBIS) modeling and analysis efforts, in addition to any related workshops as needed. Additionally, technical assistance will be provided through the Oregon Coordinating Group's Technical Outreach and Assistance Team (TOAST). USFS will provide assistance on their land and resource management plans and watershed assessments, hydrology and fish and wildlife biology. The Natural Resource Conservation Service (NRCS) will provide assistance on resource inventories on private lands. Cities and counties will provide information on land use and zoning and on municipal water supply needs.

Related Planning Efforts

Extensive watershed analysis and planning has already been done in the Umatilla and Willow subbasin. The Core Partnership will coordinate this current planning effort with the other activities, programs and planning efforts for fish, wildlife, water quality, resource use and watershed restoration. Examples include efforts through the Oregon Plan for Salmon and Watersheds, OWEB, the Northwest Forest Plan, and Oregon statewide land use planning. Oregon Department of Environmental Quality, along with cooperating basin agencies, have already completed the Umatilla River Basin TMDL and WQMP (approved in 2001); a TMDL is currently being written for Willow Creek basin. Oregon Department of Agriculture prepared an SB 1010 Agricultural Water Quality Area Plan for the Umatilla Basin in 1999; the draft document for Willow Creek basin is currently being reviewed by agency and public entities. Other key documents include the watershed assessments prepared by the watershed councils, soil and water conservation district geographic priorities, federal land management agency land and resource management plans (including the data in the Interior Columbia Basin Ecosystem Management Project), irrigation district water conservation plans, ODFW fish management plans and local zoning regulations and land use plans.

Schedule

Following a contract award with the Council, the active planning process is expected to begin February 2003 and conclude approximately fourteen months later in April 2004. Projected goals of the process are:

August 2003	Complete overview, assessment, including updated fish and wildlife species characterization and status, environmental conditions, ecological relationships, and limiting factors
October 2003	Complete inventory of existing activities
December 2003	Complete draft vision and biological objectives
March 2004	Complete draft management plan
April 2004	Submit final Subbasin Plan to Northwest Power Planning Council
July 2004	Plan adopted by Council after review and/or revision by ISRP and

Public Participation and Involvement

Broad participation in the subbasin planning process is already assured through the formation and involvement of the Stakeholders Group, which represents the basin's citizens and their various interests in the watershed. A list of the Stakeholder entities involved in the process can be found in the MOA. The composition of the Core Partnership also assures visibility, prestige and support for the subbasin planning effort. Under the guidance of the Core Partnership, the UBWC staff will develop a comprehensive public outreach plan, ensuring that all of those interested in fish and wildlife restoration know about the planning process and have an opportunity to participate and comment.

As outlined in the MOA, all members of the Core Partnership have agreed to support a collective "consensus" method for decision-making. The "consensus" position will represent the collective, general agreement on a topic, even though individual participants may prefer their own position to the collective position. If consensus cannot be reached, then a super majority of votes (5:1) will be required to move decisions to finality. Members in absentia will indicate their vote by fax, phone or email.

All meetings (Core Partnership, Stakeholders Group and Technical Team) will be open to the public, and meetings will be scheduled to brief local elected officials. There will be four advertised, public hearing meetings held at key stages of the planning process to obtain public input and comments. A more detailed description of the planned public involvement activities is included in the statement of work and budget. Throughout the project, information will be made available via local natural resource internet sites, including the UBWC and CTUIR websites.

STATEMENT OF WORK

The Core Partnership will prepare the subbasin plan following the guidance set forth in Section III.C. of the *Oregon Specific Guidance* (Oregon Subbasin Planning Project Manager, draft 2002) and in *Technical Guide for Subbasin Planners* (Council Document 2001-20). The Technical Writer/Editor will prepare chapters of the plan for review by the Core Partnership. Materials provided by the Oregon Subbasin Coordinating Group (OCG) will be integrated into appropriate chapters. Technical assistance from the subbasin Technical Team will be utilized as needed. The Core Partnership will focus its efforts on development of the management plan and strategies. Public outreach and involvement through the Stakeholders Group will be built in at every stage of the planning process.

Fish and wildlife population and habitat management goals and objectives, including harvest, natural and hatchery production, will be developed for a 10-15 year planning outlook. Strategies to meet goals for habitat protection and restoration will be prioritized in collaboration with local stakeholders as part of the planning process. The Core Partnership will rely mostly on existing information for assessment tasks, and focus the

majority of effort in developing the management plan and strategies. The Core Partnership, Technical Team and subcontractor(s) will work with OCG and TOAST to assemble data needed for a refined Ecosystem Diagnostic and Treatment model (EDT) for the Umatilla and Willow drainages, and will use model results to validate current assumptions about aquatic habitat capacity and limiting factors. They will also work with other agency specialists, including but not limited to, ODFW, USFS and CTUIR, to refine and expand existing wildlife population and habitat information, and in identifying wildlife research needs.

Deliverables and Work Products

The following subbasin planning products will be prepared with a tentative start date of February 2003 and a completion date of April 2004. Tasks and major subtasks are further summarized below.

1. Develop an EDT model for the Umatilla / Willow subbasin.
2. Update aquatic and terrestrial assessments for the Umatilla / Willow subbasin (fish populations, aquatic habitat conditions, artificial production, and wildlife habitat and populations).
3. Update subbasin inventory of existing activities, projects, programs and plans.
4. Develop a management plan based on scientific information and prepared with public input through the Stakeholders Group, and coordinated with NOAA Fisheries, USFWS and ODEQ for consistency with the CWA and Endangered Species Act plans and requirements.
5. A copy of all data and documents used to develop the subbasin plan will be transmitted to the TOAST for regional archiving and accessibility.

Planned completion of the draft subbasin plan is March 2004, which will allow time for public review and response to comments before the plan is submitted to the Council in April 2004.

Tasks and Major Sub-tasks

Startup

The planning process has already begun in the Umatilla / Willow subbasin with the development of the Stakeholders Group, the Core Partnership, and the signing of the MOA. Extensive meetings among all participants have helped identify an agreed-upon purpose and approach to the planning process. The process will proceed upon signing of a contract with the Council.

As directed by the Core Partnership, CTUIR will subcontract with a qualified person(s) for one or more positions: a Project Manager for overall project coordination services; a Technical Writer/Editor who will take the lead in drafting the subbasin plan; local agency technical staff; and other technical consultants as needed throughout the planning process. Working with the Project Manager, CTUIR will develop appropriate project

management systems to track and manage associated contracts. The Fiscal Agent may also subcontract with UBWC, ODFW, USFS, CTUIR or other specialists for fish and wildlife technical support services.

Members of the Core Partnership will meet periodically with key public officials and newspaper editorial boards to make them aware of the planning process and to solicit their comments and concerns. While a separate website will not be created, project information will be linked with local natural resource websites including but not limited to, the UBWC website (www.oregontrail.net/~umawatershed/), the CTUIR website (www.umatilla.nsn.us/), and the Council website (www.nwcouncil.org/fw/subbasinplanning).

Assessment

1. Subbasin Overview: The Project Manager will work with the Technical Team and Core Partnership to identify and gather the existing plans, watershed assessments and reports on the Umatilla / Willow subbasin. Working with these documents and the Subbasin Summary, a description will be prepared for review by the Technical Team and Core Partnership. The overview will describe the geography, land ownership, biological and environmental situation in the subbasin. Information on how the Umatilla / Willow subbasin fits into the overall regional context will be provided by TOAST and included in the overview. The Core Partnership will work with TOAST, ODFW, USFS and CTUIR staff to compile more detailed information concerning fish and wildlife populations and habitat components, with a special emphasis on focal species. They will work with state and federal biologists to identify data gaps.

The overview will be completed by the end of April 2003 and reviewed by the Technical Team and Core Partnership.

2. Species Characterization and Status: ODFW, USFS and CTUIR will identify the focal species based upon ESA status, state sensitive species lists, cultural importance and other factors. The list will be reviewed by a technical review team from federal land management agencies and others, before review by the Technical Team and Core Partnership. Based upon the list of focal species, the Project Manager and Writer/Editor will work with the agency biologists to delineate and characterize each species and the conditions needed to ensure their long-term sustainability in the subbasin. This work will utilize input from the TOAST to ensure consistency. USFWS, NOAA Fisheries and/or the Council will provide needed information on out-of-subbasin effects and assumptions for each focal species. The NOAA Fisheries Interior Columbia Technical Recovery Team will provide identification of independent populations within listed Evolutionarily Significant Units (ESU) and interim and final recovery goals for listed ESU's.

This step will be completed by April 2003 and will be reviewed by the Technical Team and Core Partnership.

3. Environmental Conditions: The Technical Writer/Editor will develop the description of existing conditions based upon the Subbasin Summary, existing plans and watershed

assessments. This description will be reviewed by the Technical Team and Core Partnership to ensure that it accurately provides a benchmark of the present situation. The TOAST will provide database structures, coarse screen EDT data sets, data input assistance, retrieval tools and standard report templates to use in the Plan. ODFW, USFS and CTUIR will work with TOAST and a qualified subcontractor to select stream reaches for developing the EDT model. They will work to transform state, tribal and federal stream habitat survey data into a usable format for the EDT model / reach level analysis, and will fill in the habitat attribute and population data. Other models used in the analysis may include IBIS and The Nature Conservancy's Sites Model.

The description of existing conditions will be completed by May 2003.

4. Ecological Relationships: Through assistance from Mobrand, The Nature Conservancy, Northwest Habitat Institute or other qualified consultants, local technical staff from ODFW, CTUIR and other state and federal agencies will review the key interspecies and functional relationships, processes and functions of the focal species. Selected members of the Technical Team will participate in EDT workshops. The Project Manager and Writer/Editor will then work with TOAST and agency staff to prepare a written assessment of habitat population interactions for the focal species. This section will then be reviewed by the Technical Team and the Core Partnership.

5. Limiting Factors and Conditions: Based upon the analysis of environmental conditions and analysis of ecological relationships, the Technical Team will identify the limiting factors and conditions that inhibit the ecological processes needed for sustainable populations of the focal species. The description and discussion of limiting factors and conditions will be reviewed by the Core Partnership and documented, including data sources.

Both the description of ecological relationships and limiting factors will be completed by May 2003.

6. Interpretation and Synthesis: Members of the Technical Team, with assistance from TOAST, will synthesize findings and develop a working hypothesis, characterizing species abundance and productivity, desired future conditions, and identifying opportunities and challenges. An analysis of limiting factors and conditions will be integrated with work on the ecological relationships. The resulting findings will be used to develop scenarios for the management plan. Key assumptions will be stated and key factors impeding optimal ecological function and biological performance for the focal species will be identified. Near-term opportunities will be identified based upon areas that are high priorities for protection, for restoration, and for needed reference sites. Interim strategies and actions will be described and prioritized. The assessment will be reviewed by the full Technical Team and Core Partnership.

The draft assessment will be completed by the end of June 2003.

Inventory

1. Inventory of Existing Projects and Accomplishments: While the assessment is being done, the Project Manager will work with the Technical Team and Core Partnership to prepare an inventory of existing restoration and habitat activities in the subbasin, in addition to existing regulatory programs. A summary of the current management strategies, habitat protection projects, and on-going restoration projects will be completed. Members of the Core Partnership and Stakeholders Group, along with other organizations involved in restoration work, will be interviewed or surveyed. Maps of habitat restoration projects and other inventory elements will be created.

The Technical Team and Core Partnership will review the inventory against the assessment results to identify gaps between actions taken and actions needed. A public meeting will be held to solicit comments. This process will be completed in September 2003.

Management Plan

1. Vision: A vision statement will be developed and written by the Core Partnership describing the desired future condition of the subbasin. The vision statement will be completed and available for public review by December 2003. The Project Manager will take the lead on working with the Core Partnership in the development of the vision statement.

2. Biological Objectives: The biological objectives will be based on the vision statement and will encompass ESA recovery goals. They will explain how the limiting factors will be addressed and be used to describe and quantify the potential changes in biological performance of the focal species. The biological objectives will be developed by the Technical Team with support from ODFW, CTUIR, USFS and TOAST. They will be reviewed by the Core Partnership before adoption and will be completed by December 2003.

3. Strategies: Proposed strategies will be developed by the Technical Team and reviewed by the Core Partnership. Developing these strategies will occur October through December 2003. Through public participation, strategies will be prioritized and an implementation sequence will be determined to achieve the proposed biological objectives. A strategy for eliminating identified data gaps will be developed and included in the planning document.

4. Consistency with ESA and Clean Water Act Requirements: The Core Partnership will work with the USFWS and NOAA Fisheries to evaluate consistency with ESA requirements and contributions to the ESA recovery goals. The Core Partnership will work with ODEQ to determine consistency with the CWA requirements. The management plan will explain how the objectives and strategies are integrated with recovery goals for listed species and TMDL implementation plans.

5. Research, Monitoring and Evaluation: Research needs will be identified to ensure that the critical assumptions in the analysis are addressed and data gaps filled. Additional monitoring and research studies that are needed for improved decision-making will be identified. This portion of the management plan will be developed by the

Technical Team, and will be reviewed by the Core Partnership to ensure that it meets decision-making needs and priorities. TOAST will assist with preparation of the monitoring and evaluation component.

Umatilla / Willow Subbasin Plan

- 1. Public Comments and Revision of Draft Plan:** A draft version of the subbasin plan will be completed by March 2004. A public hearing will be held, and a copy of the subbasin plan will be submitted for review by the Independent Scientific Review Panel (ISRP), Council, NOAA Fisheries and other interested public and advisory groups. Upon request, the Core Partnership will provide outreach presentations.
- 2.** The final version of the Umatilla / Willow Subbasin Plan will be submitted to the Council in April 2004.

Umatilla / Willow Subbasin Project Schedule

2003										2004											
Feb	Mar	Apr	May	June	July	Aug	Sept	Oct	Nov	Dec	Jan	Feb	Mar	Apr							
Start-up; CTUIR subcontracting; internal tracking system			ASSESSMENT & INVENTORY																		
Subbasin overview & focal species completed										MANAGEMENT PLAN											
Compile references, documentations and maps										Define subbasin vision and biological						Monitoring, evaluation, and research plan					
Summarize existing projects, programs, plans and ordinances																Develop and prioritize subbasin strategies					
Develop EDT model; define reaches, convert stream survey data for model use, refine data sets										Review and validate EDT model results											
Compile wildlife information; utilize IBIS & Sites modeling; TOAST planning tools										Synthesis of findings: working hypothesis, species abundance / productivity, desired future conditions, opportunities, challenges									Compare inventory and assessment to identify gaps between actions taken and actions needed		
PUBLIC INVOLVEMENT																					
Public meeting #1							Public meeting #2		Public meeting #3				Public meeting #4								

Subbasin progress report		Draft assessment reviewed	Draft vision & biological objectives reviewed		Draft management plan reviewed
					Subbasin Plan Finalized

Umatilla / Willow Subbasin Workplan

Statement of Work Budget detail

PERSONNEL SERVICES

Task	Position title	Rate	Hours	Subtotal	Task Total
Assessment					\$58,518.00
	Project Manager	\$ 40.00	336	\$ 13,440.00	
	Technical Writer/Editor	\$ 30.00	243	\$ 7,278.00	
	Other Agency Staff	\$ 40.00	370	\$ 14,800.00	
	Technical Consultant	\$ 100.00	230	\$ 23,000.00	
Inventory					\$19,206.00
	Project Manager	\$ 40.00	112	\$ 4,480.00	
	Technical Writer/Editor	\$ 30.00	81	\$ 2,426.00	
	Other Agency Staff	\$ 40.00	120	\$ 4,800.00	
	Technical Consultant	\$ 100.00	75	\$ 7,500.00	
Management Plan					\$117,076.00
	Project Manager	\$ 40.00	672	\$ 26,880.00	
	Technical Writer/Editor	\$ 30.00	485	\$ 14,556.00	
	Other Agency Staff	\$ 40.00	741	\$ 29,640.00	
	Technical Consultant	\$ 100.00	460	\$ 46,000.00	
TOTAL PERSONNEL SERVICES					\$194,800.00

TRAVEL

Expense	Days/nights	Rate	Total	
Per diem (federal rate - CONUS)	25	\$ 30.00	\$	750.00
Lodging (federal rate - CONUS)	25	\$ 55.00	\$	1,375.00
Air travel	From/to	Rate	# of trips	Total
Attend pertinent regional meetings & training	PDT-PDX	250	2	\$ 500.00
Car travel	From/to	Rate/mi	# of miles	Total
Mileage to attend meetings & training (EDT)		0.365	13,026	\$ 4,754.49
TOTAL TRAVEL				\$ 7,379.49

SERVICES & SUPPLIES

	Unit cost	Quantity	Total
Advertising (\$ per ad x # of ads)	150.00	6	\$ 900.00
Computer support/software/supplies (\$ per month x months)	300.00	10	\$ 3,000.00
Meeting expenses (room rate x # of mtgs)	100.00	10	\$ 1,000.00
Postage (\$ per month x months)	70.00	14	\$ 980.00
Printing/copying (\$ per copy x copies)	0.10	50,000	\$ 5,000.00
Supplies (\$ per month x months)	240.00	14	\$ 3,360.00
Telephone (\$ per month x months)	60.00	14	\$ 840.00
TOTAL SERVICES & SUPPLIES			\$ 15,080.00

Subtotal	\$ 217,259
*+ BPA approved indirect (40%)	\$ 2,402
Total	\$ 219,661

* Indirect through CTUIR (at rate of 40%) applied only to Travel (minus Lodging).
Lodging and Services & Supplies will be paid through UBWC subcontract (no indirect costs).

w:\lp\ww\packet materials\january 03\umatilla-willow workplan.doc