

JUDI DANIELSON
CHAIR
Idaho

Jim Kempton
Idaho

Gene Derfler
Oregon

Melinda S. Eden
Oregon

NORTHWEST POWER PLANNING COUNCIL

851 S.W. SIXTH AVENUE, SUITE 1100
PORTLAND, OREGON 97204-1348

TOM KARIER
VICE-CHAIR
Washington

Frank L. Cassidy Jr.
"Larry"
Washington

Ed Bartlett
Montana

John Hines
Montana

Fax:

503-820-2370

Phone:

503-222-5161
1-800-452-5161

Internet:

www.nwccouncil.org

February 11, 2003

MEMORANDUM

TO: Council Members

FROM: Tony Grover

SUBJECT: Methow Subbasin Planning Contracts

Proposed Action

Staff recommends that the Council authorize the Executive Director to negotiate two contracts to develop a subbasin plan for the Methow Subbasin, based on the proposal submitted by the Washington Department of Fish and Wildlife and Okanogan County. These contracts will observe the terms and conditions of the Council's Master Contract with Bonneville for subbasin planning and will follow the Council's standard contracting policies and practices. The proposals have been approved by, and are submitted through, the Upper Columbia Salmon Recovery Board (UCSRB). The contracts will not exceed the following amounts:

1. Okanogan County - \$142,710
3. Washington Department of Fish and Wildlife (WFDW) - \$53,860

Background

The Methow subbasin is one of six subbasins located in the Columbia Cascade Province and within the UCSRB's jurisdiction. The UCSRB has designated the Washington Department of Fish and Wildlife and Okanogan County as Co-Lead Entities and fiscal agents for the Methow. A portion of the Level II technical funding is also being contributed toward the development of the Methow technical products as described in the separate Regional Coordination and Technical Funding Work Plan. *The proposed workplan and budgets, which have been sent to you electronically, are available on the Council's website at www.council.org/news/agenda.htm.*

Schedule and Budget

The final Methow subbasin plan will be submitted to the Council in May 2004 for amendment into the Fish and Wildlife Program. The budget for these two contracts will not exceed for \$196,570 for FY03/04.

METHOW SUBBASIN PLAN WORK PLAN

JANUARY 2003

Washington Department of Fish and Wildlife, Co-Lead Entity

Dennis Beich, Lead Entity Co-coordinator

Okanogan County, Co-Lead Entity

Julie E. Dagnon, Lead Entity Co-coordinator

Columbia Cascade Province

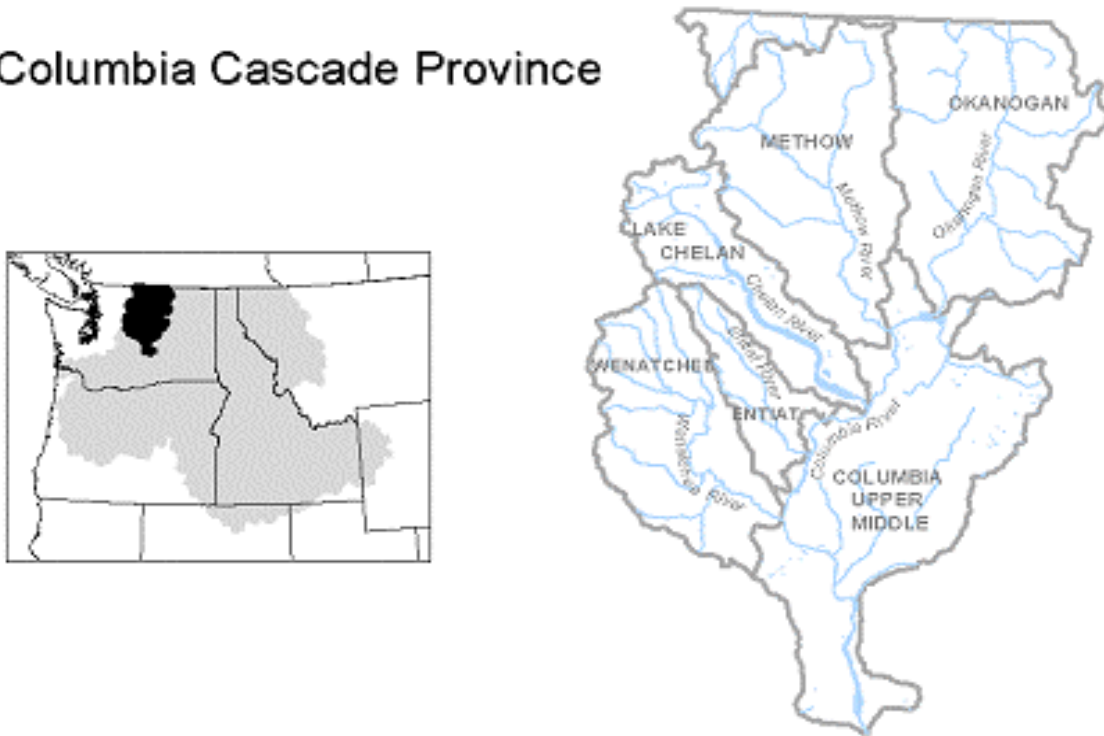


Table of Contents

Work plan for the Methow Subbasin Plan

Application Certification and Transmittal

Application Organization Information

Contract Contact Information

Project Overview

Project Purpose

Overall Project Timeframe

Organization

Coordination

Technical Assistance

Strategy

Table of Contents

Subbasin Tasks

Critical Paths and Tasks

Schedule

Deliverables

Budget

APPLICATION CERTIFICATION AND TRANSMITTAL

To: Northwest Power and Conservation Council
851 SW Sixth Avenue, Suite 1100
Portland, OR 97204
Attn: Contracts Officer

Thru: Upper Columbia Salmon Recovery Board
Contact Person: Ron Walter, Board of Directors Chair
Telephone: 509-667-6215

From: Washington Department of Fish and Wildlife and Okanogan
County Subbasin Planning Team

Contact Persons:
Dennis Beich, Washington Department of Fish and Wildlife
Region 2 Director
Telephone: 509 754 6069

Julie Dagnon, Okanogan County Water Resource Manager
Telephone: 509 422 7370

Request: On behalf of the Methow Subbasin Planning Team and Lead Entities, Washington Department of Fish and Wildlife (WDFW) and Okanogan County (County) will serve as the fiscal agent for the Methow Subbasin Planning effort. WDFW and the County request contract financial assistance from the Northwest Power and Conservation Council (NPCC) for development of the Methow Subbasin Plan in accordance with such funding conditions as may be required by the NPCC. This application is prepared with full knowledge and understanding of the NPCC's practices and procedures described in the attachments materials provided.

Project Name: Methow Subbasin Plan
Subbasin: Methow
Province: Columbia Cascade Province

Certification:

I/we certify that to the best of our knowledge, the information provided in this application is true and correct and that the financial assistance requested will be utilized only for the purpose of carrying out the activities described in the attached statement of work.

Authorized
Representative_____

Signature

Date: January 24, 2003

Printed Name and Title:
Dennis Beich, WDFW Region 2 Director

Authorized
Representative_____

Signature

Date: January 24, 2003

Printed Name and Title:
Julie E. Dagnon, Okanogan County Water Resource Manager

APPLICANT/ORGANIZATION INFORMATION

Province name: Columbia Cascade

Subbasin name: Methow

Organization name: Washington Department of Fish and Wildlife & Okanogan County (Lead Entities)

Type of organization and purpose: State agency and County Government

WDFW Mailing Address: 1550 Alder Street NW

City/Town: Ephrata

State, Zip: Washington, 98823-7669

Telephone: 509 754 6069

Email address: beichdwb@dfw.wa.gov

FAX: (509) 754-5257

County Mailing Address: 123 North 5th Avenue, Room 110

City/Town: Okanogan

State, Zip: Washington, 98840

Telephone: 509 422 7370

Email address: JDagnon@co.okanogan.wa.us

FAX: (509) 422 7106

Contract contact information:

Washington Department of Fish and Wildlife

Contact Person: Diana Neiswanger

Mailing Address: 600 Capitol Way N

City/Town: Olympia

State, Zip: Washington, 98501-1091

Telephone: 360-902-2438

Email address: neiswdln@dfw.wa.gov

Okanogan County

Contact Person: Ms. Julie E. Dagnon

Mailing Address: 123 North 5th Avenue, Room 110

City/Town: Okanogan

State, Zip: Washington, 98840

Telephone: 509 422 7370

Email address: JDagnon@co.okanogan.wa.us

Project Overview

The Northwest Power Act of 1980 directs the Northwest Power and Conservation Council (NPCC) to develop a program to protect, mitigate, and enhance fish and wildlife of the Columbia River Basin and make annual funding recommendations to the Bonneville Power Administration for projects to implement the program. Subbasin plans will contain the measures that drive the implementation of the NPCC's Fish and Wildlife Program at the subbasin level.

The Methow subbasin plan will be developed in an open, public process that will include the participation of a wide range of state, federal, and tribal governments; local managers; landowners; local governments; and other stakeholders. The lead entities identified for the Methow are the Washington Department of Fish and Wildlife (WDFW) & and Okanogan County (County).

The lead entities will assemble a group of technical experts to work on the assessment piece of the plan. The subbasin technical group (a component of the subbasin Core Planning Team (CPT)) should have the biological, physical, and management expertise to refine, validate and analyze data that will guide the planners while developing the plan. This is vital because the NPCC's expectation is that subbasin plans should be based on current scientific understanding of the subbasin and explicitly identifies the underlying data, assumptions, and rules.

The Methow subbasin plan will be developed locally in collaboration with fish and wildlife managers, local governments, interest groups, and stakeholders and other state and federal land and water resources managers. This means public involvement is a fundamental part of the process.

It is the NPCC's intent that the subbasin summary completed in 2002 will provide the starting point for the development of the subbasin plan.

Project Purpose

This management plan for the Methow Subbasin (hereafter referred to as 'Subbasin Plan') will help to define goals, objectives and strategies – a management plan - for fish and wildlife for a 10-15 year horizon. The Subbasin Plan will be submitted to the NPCC for adoption under

the NPCC's Fish and Wildlife Program, to help direct the Bonneville Power Administration (BPA) funding to projects that will enhance, mitigate and protect fish and wildlife populations adversely impacted by the Columbia River hydropower system.

Located in the Columbia Cascade Province in North Central Washington, the physical subbasin area covers encompasses the entire Methow River drainage, extending approximately 80 miles from the headwaters near the crest of the Cascade Range to the confluence of the river with the Columbia River at Pateros, Washington.

The Subbasin Plan will be submitted to the NPCC for consideration and adoption as the goals and priorities for the NPCC's Fish and Wildlife program and the provisions of the Northwest Power Act. It is intended to be consistent with and to assist in addressing the requirements of the following: the Endangered Species Act (ESA) species recovery plans, the Federal Clean Water Act (CWA), the Washington Department of Fish and Wildlife's Model Recovery Plan for Salmon, Watershed Planning activities under HB 2514, tribal trust responsibilities and rights, and local land use plans.

The Upper Columbia Salmon Recovery Board (UCSRB) and the subbasin lead entities seek to have the Subbasin Plan serve as the building block for ESA recovery plans now being developed by the National Oceanic and Atmosphere Administration, Fisheries (NOAA Fisheries) for listed species of anadromous fish in the subbasin and by the U.S. Fish and Wildlife Service (USFWS) for bull trout. The Methow Subbasin CPT intends to use the NOAA Fisheries local recovery plan guidelines in developing the subbasin plan, and is currently reviewing the bull trout recovery plan for application and use.

The Methow subbasin plan will be developed such that it will identify and prioritize actions needed to:

- Review streamflows to meet water quality standards, instream water rights, fish and wildlife habitat objectives and existing water rights;
- Support research, monitoring and evaluation to guide existing and future restoration and management efforts in the subbasin;
- Support fish and wildlife artificial propagation measures where necessary to achieve population goals;

- Review water quality standards to meet tribal, state and federal standards;
- Maintain and restore the resource land base in the subbasin, consistent with acknowledged comprehensive land use plans, species recovery and the economic viability of the resource-based economy in the subbasin;
- Consider municipal and industrial water needs over the next 50 years; and
- Promote sustainability and conservation consistent with the custom, culture and quality of life in the subbasin.

The following level of effort for the subbasin plan components will be used in the development of the subbasin plan and is reflected in the budget:

Assessment: 40% of total subbasin effort and budget

Inventory: 20% of total subbasin effort and budget

Management Plan: 40% of total subbasin effort and budget

As such, products for each of the plan components will be consistent with this level of effort.

Overall Project Time Frame

The subbasin assessment (biological and social) and project inventory will be the focus for the subbasin planning groups during the first eight months. A concurrent public outreach/review process will also occur. These processes will fuel development of the management plan which will be complete by May 2004.

Organization

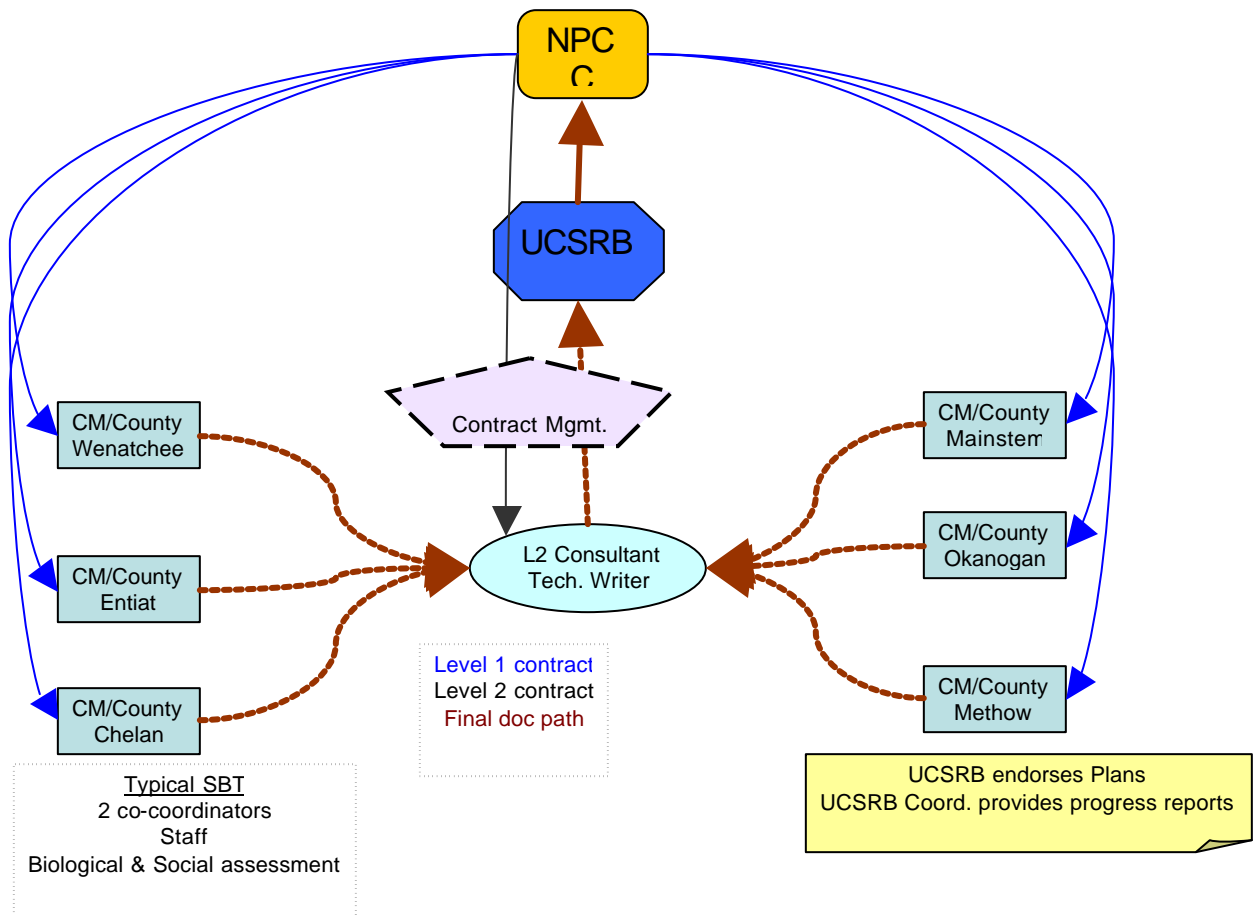


Figure 1: Figure of general provincial organization

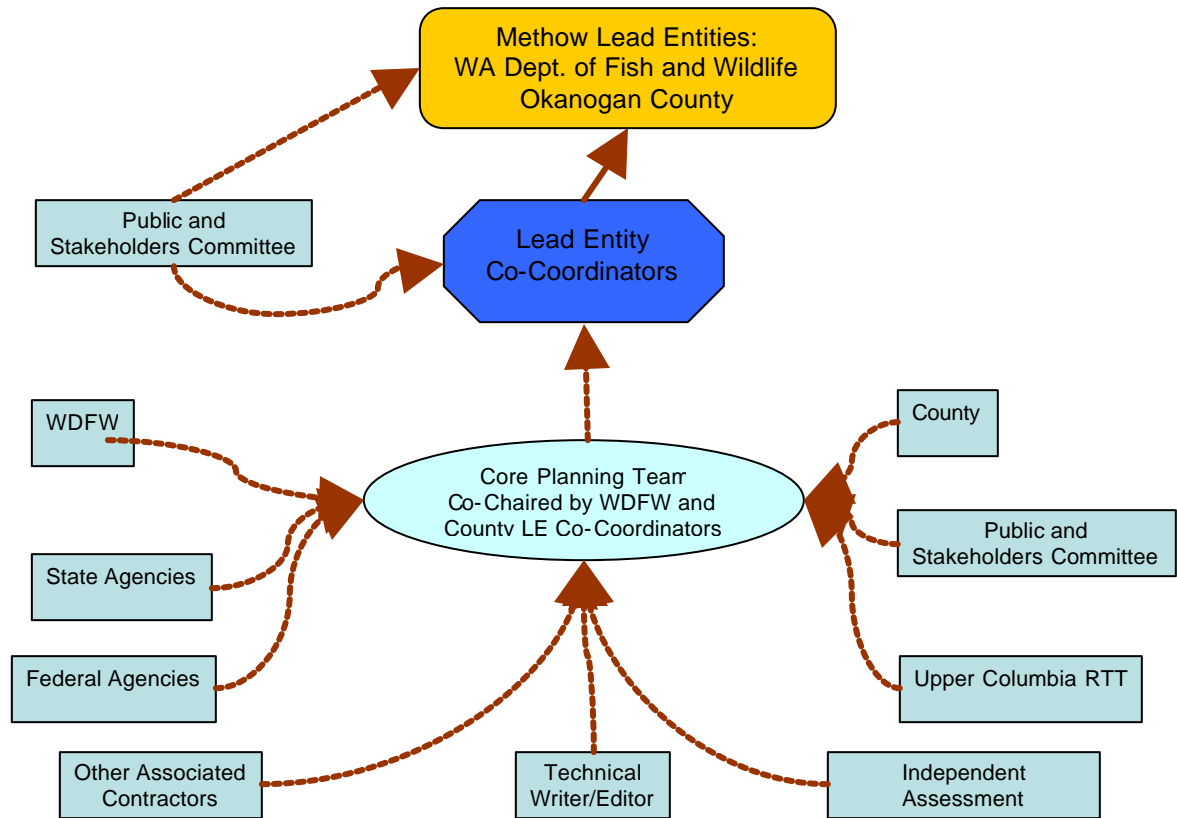


Figure 2: Figure of general Methow subbasin organization.

Upper Columbia Salmon Recovery Board

The Upper Columbia Salmon Recovery Board (UCSRB) is a regional salmon recovery board that consists of three counties – Chelan, Douglas and Okanogan – and two tribes – Colville Confederated Tribes and the Yakama Nation. The UCSRB addresses salmon recovery from locally based grassroots efforts to include public involvement through elected and appointed officials representing a broad array of interests across physical and cultural landscapes. As shown in Figure 1, the UCSRB is coordinating and overseeing the subbasin planning process across the province. Staffs of the UCSRB Board of Directors are, coincidentally, leading and/or participating in the subbasin planning process within their county or interest area. The subbasin plans from each subbasin will be compiled and submitted to the NPCC as the Provincial plan. The UCSRB will first endorse this Provincial plan before submittal to NPCC.

Lead Entities

The Lead Entities for the Methow Subbasin planning process are the Washington Department of Fish and Wildlife (WDFW) and Okanogan County (County). Their primary responsibility will be to initiate the subbasin planning process, ensure that it is open and inclusive, provide adequate outreach to subbasin stakeholders and complete the subbasin plan to the NPCC's requirements. These lead entities will be the parties that are contractually committed to submitting a subbasin plan to the NPCC for proposed adoption into the NPCC fish and wildlife program.

Subbasin Coordinators

There will be one subbasin coordinator each from WDFW and the County. The subbasin coordinators' responsibilities are to provide leadership throughout the process, to serve as a contact point, chair the CPT and to coordinate communication between various members of the planning group, public and the UCSRB.

Stakeholders Group

Stakeholder is defined as persons or entities, which reside in, derive their livelihood from, or are involved with business, research or regulatory means within the Methow watersheds. The Stakeholders Group includes representatives from various basin organizations, cities, the County, WDFW, irrigation districts, state agencies and federal land and resource management agencies. The Stakeholders Group will meet throughout the planning process, with all meetings open to the public. Essentially those persons who attend the public meetings to participate in the subbasin planning process are members of the Stakeholders Group – the general public of the subbasin.

Subbasin Core Planning Team

The Core Planning Team (CPT) is the hub for the subbasin planning process. The group consists of representatives from local interest groups, the County, WDFW as well as state and federal agencies. The County and WDFW will serve as the Co-Chairs of the CPT. WDFW and the County will serve as joint Fiscal Agents, managing the two contracts with the NPCC and contracting for other services as required in preparing the Subbasin Plan.

Members of the CPT will be the most active group in this subbasin effort. The level of involvement of the various members of the CPT will vary through out the subbasin planning process depending upon the progress point of the process. The CPT will take the lead in coordination among the groups and in development of the vision, the biological objectives, and prioritization of subbasin strategies. Regular

communication and input between the CPT, the Stakeholders Group, and subcontractors will be maintained. Meetings of the CPT will be held on a regular basis and will be open to the public.

Washington Department of Fish and Wildlife

The Washington Department of Fish and Wildlife (WDFW) is participating the Methow subbasin planning process as a co-manager and as a lead entity. The following describes WDFW's participation for the specified tasks:

Assessment: WDFW will participate in the CPT which includes assisting in identifying, locating and assembling appropriate technical information needed to develop the biological objectives, assisting in the development of EDT and providing information regarding the wildlife component of the subbasin plan.

Inventory: WDFW will assist the co-lead entities in identifying and collecting information regarding existing programs/projects in the subbasin.

Management Plan: WDFW will provide technical expertise at key meetings and work with the co-lead entities on the development of a monitoring and evaluation plan.

WDFW's level of participation is reflected in the budget of this work plan for the subbasin plan.

Upper Columbia Regional Technical Team

This interdisciplinary team will work under the direction of the UCSRB; it is comprised of specialists from various basin agencies and entities, as well as members of the CPT. The RTT will 1) provide periodic comments to the Board on the biological assessments and the conclusions (key findings, hypothesis statements and proposed management strategies) that are drawn, and 2) provide a final review of the document to be submitted to the Board prior to submission to NPCC. Technical coordination with the TRT will be through the RTT.

Subcontractor(s)

The County will subcontract with a qualified person, agreed upon by both lead entities, to provide independent review of the assessment phase. WDFW will subcontract with an experienced Technical Writer/Editor, agreed upon by both lead entities, to compile, write and edit the plan. In addition, the lead entities will subcontract with other agency staff and other technical consultants as needed throughout the

planning process. The CPT co-chairs will work closely with the CPT, Stakeholder Group, and the Writer/Editor to compile, edit and write the various sections of the Subbasin Plan. The CPT co-Chairs will take the lead in compiling data contributed by all parties. All meetings of the CPT, and Stakeholder Group will be open to the public, and participation by others interested in the subbasin planning effort will be encouraged.

Coordination

The organizational structure of the CPT assures coordination with all of the groups actively working towards development of a management plan in the Methow subbasin. The participants are committed to building on all of the watershed assessment and planning work that has already been done. The individuals serving on the CPT will assure that their organizations receive regular updates on the planning process so that as many of their members as possible track developments as they occur.

The Co-Chairs of the CPT will participate in all Stakeholder Committee meetings, provincial meetings, and public meetings. They will take the lead in reviewing the subbasin assessment for accuracy, developing the vision and biological objectives and prioritizing strategies. The co-Chairs will work closely with the CPT to maintain good communication among all participants, and in coordinating and tracking project tasks.

Technical Assistance

WDFW will be the lead on the assessment of the subbasin plan. Technical assistance will be provided through the Upper Columbia Regional Technical Team (RTT) as directed by the UCSRB. State and federal agencies will be called upon to provide assistance and information pertinent to subbasin planning. This assistance and information may include but is not limited to: land and resource management plans, watershed assessments, hydrology fish biology, wildlife biology and vegetation surveys. The County will provide information on land use and zoning and on municipal water supply needs.

Strategy

The Methow Subbasin Lead Entities will prepare the Subbasin Plan following the guidance set forth in the *Technical Guide for Subbasin Planners* (NPCC Document 2001-20). The Technical Writer/Editor will prepare chapters of the plan for review by the CPT. Materials provided by the CPT will be integrated into appropriate chapters. The CPT and Stakeholder Group will then focus its efforts on development of the management plan and strategies. Public outreach and involvement through the Stakeholders Group will be built in at every stage of the planning process. Finally, the UCSRB intends to integrate all six subbasin plans into a single Columbia Cascade Province Plan for delivery to NPCC in May of 2004.

Fish and wildlife population and habitat management goals and objectives, including harvest, natural and hatchery production, will be developed for a 10-15 year planning outlook. Strategies to meet goals for habitat protection and restoration will be prioritized in collaboration with local stakeholders as part of the planning process. As intended by the NPCC, the CPT will rely mostly on existing information for assessment tasks, and focus the majority of effort in developing the management plan and strategies. The CPT and subcontractor(s) will work with stakeholder group and others to assemble data needed for a refined Ecosystem Diagnostic and Treatment model (EDT) for the Methow drainages, and will use model results to validate current assumptions about aquatic habitat capacity and limiting factors. They will also work with the Stakeholder Group and other agency specialists to refine and expand existing wildlife population and habitat information, and in identifying wildlife research needs.

Table of Contents

The proposed table of contents for the Methow subbasin plan is:

- I. Introduction
- II. Subbasin Assessment
 - a. Subbasin Overview
 - b. Fish and Wildlife Species Characterization and Status
 - c. Environmental Conditions
 - d. Ecological Relationships
 - e. Limiting Factors and Conditions
 - f. Interpretations and Synthesis: Development of the Working Hypothesis
- III. Inventory of Existing Activities

- a. Current Management Activities
 - b. Restoration and Conservation Projects
- IV. Management Plan
 - a. The Visions for the subbasin
 - b. Biological Objectives
 - c. Strategies
 - d. Consistency with Endangered Species Act/Clean Water Act requirements
 - e. Research, Monitoring, and Evaluation
- V. Appendices

Subbasin Tasks

The following subbasin tasks will occur with a tentative start date of March 2003 and a completion date of May 2004. These tasks and the appropriate subtasks with associated deliverables, work products, and schedule are further summarized below.

1. Development of a work plan
2. Public Outreach and Review
3. Subbasin Assessment: Update aquatic and terrestrial assessments for the Methow subbasin (fish populations, aquatic habitat conditions, artificial production, and wildlife habitat and populations). This will include the development of an EDT model for the Methow subbasin.
4. Inventory of Existing Activities and Projects: Update subbasin inventory of existing activities, projects, programs and plans.
5. Management Plan: Develop a management plan based on scientific information and prepared with public input through the Stakeholders Group, public meetings, and coordinated with NOAA Fisheries, USFWS, WDFW and DOE for consistency with the CWA and Endangered Species Act plans and requirements.
6. Writing/Editing

Planned completion of the draft Subbasin Plan is March 2004, which will allow time for public review and response to comments before the plan is submitted to the NPCC in May 2004.

1. Development of the work plan

Numerous meetings among the lead entities, UCSRB Board members and staff have helped identify on this agreed upon purpose and approach to the subbasin planning process. The process will proceed upon signing of a contract with the NPCC.

2. Public Outreach and Review

Approximately ten (10) percent of the total sub basin planning effort and budget is dedicated towards public outreach. The County will be the lead in the oversight of this task. The overall general purpose to public outreach and review will be obtaining input from the public on topics identified by the CPT during the assessment, public review and input on the inventory products and specific public input for the management plan.

The main subtasks of the public outreach and review tasks include:

- a. Meetings, open houses, and other public events will be designed and organized to produce results. Next steps will be clearly outlined.
- b. Milestones in the process will be appropriately acknowledged. Individual and group efforts and accomplishments will be recognized. The guidelines that will be followed in order to ensure successful public events include:
- c. Public Advertisement: News releases will be submitted to selected media.
- d. Letter of Invitation: Letters will be written and transmitted to local officials and individuals who have shown an interest or attended previous meetings.
- e. Meeting Preparation: A strategy session with the CPT will be held to reach consensus on the meeting format, agenda, exhibits, and handout materials before the public event. Subsequently, agendas, display graphics, and handout materials will be prepared.
- f. Meeting Record: the Facilitator and Writer/Editor will prepare a Summary Report. Meeting results will be discussed with the Planning Team.

Beyond this overall public outreach effort, the CPT Co-Chairs as well as some members of the CPT will meet periodically with key public officials to make them aware of the planning process and to solicit their comments and concerns. While a separate website will not be created, project information will be linked with local natural resource websites including but not limited to, Okanogan County Water Resources, the UCSRB and the NPCC website (www.nwcouncil.org/fw/subbasinplanning).

3. Assessment

The assessment component of the subbasin plan will comprise of forty (40) percent of the total subbasin planning effort and budget for the Methow basin. Within the assessment component the WDFW will provide 60% of the assessment effort (thus being the lead), County 25%, and outreach 15%.

Fish and wildlife population and habitat management goals and objectives, including harvest, natural and hatchery production will be developed for a 10-15 year horizon. Strategies to meet goals for habitat protection and restoration will be prioritized in collaboration with local stakeholders in the planning process. As intended by the NPCC, the CPT will rely mostly on existing assessment information and focus the majority of effort on the management plan and strategies. However, it is anticipated that there will be significant time developing an EDT model and compiling available wildlife information.

The CPT and others will work to assemble data needed for a refined Ecosystem Diagnosis and Treatment Model (EDT) for the Methow drainage and use model results to validate current assumptions about aquatic habitat capacity and limiting factors. The CPT will work with state and federal agencies and other organizations to refine and expand existing wildlife population and habitat information, use tools such as IBIS, and identify wildlife habitat and research needs.

The following is brief description of the two main assessment tools to be used in the Methow sub basin.

1. The Ecosystem Diagnosis and Treatment (EDT) Method and Model will be used as the primary tool to organize and analyze existing data for anadromous fish, specifically steelhead and spring chinook salmon. WDFW will lead the overall assessment effort and coordinate facets of the analysis. Consultation with staff from Mobrand Biometrics will also ensure that the EDT assessment progresses and provides accurate and complete detail for the planning phases. Additional staff, hired under a WDFW contract and using state funds, will assist the three EDT subbasins (Wenatchee, Okanogan and Methow) in coordinating the assessment and with an overall Quality Control and Quality Assurance effort.

The Interactive Biodiversity Information System (IBIS) will be used extensively in support of subbasin planning in the Methow. IBIS contains extensive information about Pacific Northwest fish, wildlife, and their habitats, but more noteworthy, IBIS attempts to reveal and analyze the relationships among these species and their habitats.

Subtasks of the Assessment Task

a. Subbasin Overview: The CPT co-Chairs will work with the Level 2 contractor and others to identify and gather the existing plans, watershed assessments and reports on the Methow subbasin. Working with these documents and the Subbasin Summary, a description will be prepared for review by CPT. The overview will describe the geography, land ownership, biological and environmental situation in the subbasin. Information on how the Methow subbasin fits into the overall regional context will be included in the overview. The CPT will work with the Stakeholders Committee, the public, and state and federal agencies to compile more detailed information concerning fish and wildlife populations and habitat components, with a special emphasis on focal species. Data gaps will be identified.

The overview will be completed by the end of July 2003 and reviewed by the CPT and others.

b. Species Characterization and Status: Focal species will be identified based upon ESA status, overall stock status, state sensitive species lists, cultural importance and other factors. The CPT, Stakeholders Committee, public and state and federal agencies, will review the list. Based upon the list of focal species, the CPT co-Chairs and Writer/Editor will work with the agency biologists to delineate and characterize each species and the conditions needed to assure their long-term sustainability in the subbasin. This work will utilize input from the Stakeholders Committee and public to assure consistency. USFWS, NOAA Fisheries and/or the NPCC will provide needed information on out-of-subbasin effects and assumptions for each focal species. The NOAA Fisheries Interior Columbia Technical Recovery Team will provide identification of independent populations within listed Evolutionarily Significant Units (ESU) and interim and final recovery goals for lists ESU's.

This step will be completed by September 2003 and will be reviewed by the CPT and others.

c. Environmental Conditions: The Technical Writer/Editor will develop the description of existing conditions based upon the Subbasin Summary, existing plans and watershed assessments. The CPT to assure that it accurately provides a benchmark of the present situation will review this description. NPCC staff will provide database structures, coarse screen EDT data sets, data input assistance, retrieval tools and standard report templates to use in the Plan. The CPT will select stream reaches for developing the EDT model. They will work to transform state, tribal and federal stream habitat survey data into a usable format for the EDT model/reach level analysis, and will fill in the habitat attribute and population data. Other information used in the analysis may include the IBIS database.

The description of existing conditions will be completed by July 2003 and will be reviewed by the CPT and others.

d. Ecological Relationships: Through assistance of the Northwest Habitat Institute or other qualified participants, the CPT will review the key interspecies and functional relationships, processes and functions of the focal species. Selected members of the CPT will participate in EDT workshops. The CPT co-chairs and Writer/Editor will then prepare a written assessment of habitat population interactions for the focal species. The CPT and others will then review this section.

e. Limiting Factors and Conditions: Based upon the analysis of environmental conditions and analysis of ecological relationships, the CPT will identify the limiting factors and conditions that inhibit the ecological processes needed for sustainable populations of the focal species. The description and discussion of limiting factors and conditions will be reviewed by the CPT and others and will be documented, including data sources.

Both the description of ecological relationships and limiting factors will be completed by May 2003.

f. Interpretation and Synthesis: Members of the CPT, with assistance from the Stakeholders Committee, will synthesize findings and develop a working hypothesis, characterizing species abundance and productivity, desired future conditions, and identifying opportunities and challenges. An analysis of limiting factors and conditions will be integrated with work on the ecological relationships. The resulting findings will be used to develop scenarios for the management plan. Key assumptions will be stated and key factors impeding optimal ecological function and biological performance for the focal species will

be identified. Near-term opportunities will be identified based upon areas that are high priorities for protection, for restoration, and for needed reference sites. Interim strategies and actions will be described and prioritized. The CPT and others will review the assessment.

The draft assessment will be completed by the end of November 2003.

4. Inventory

The inventory component of the subbasin plan will comprise of twenty (20) percent of the total subbasin planning effort and budget for the Methow basin. Within the inventory component the WDFW will provide 42.5% of the inventory effort, County 42.5%, and outreach 15%.

While the assessment progresses, the CPT co-Chairs will work with the CPT and L2 contractor to prepare an inventory of existing restoration and habitat activities in the subbasin, in addition to existing regulatory programs. A summary of the current management strategies, habitat protection projects, and on-going restoration projects will be completed. Members of the CPT and Stakeholders Group, along with other organizations involved in restoration work, will be interviewed or surveyed. Maps of habitat restoration projects and other inventory elements will be created as appropriate.

The CPT will review the inventory against the assessment results to identify gaps between actions taken and actions needed. A public meeting(s) will be held to solicit comments. This process will be completed in September 2003.

5. Management Plan

The management component of the subbasin plan will comprise of forty (40) percent of the total subbasin planning effort and budget for the Methow basin. Within the management component the WDFW will provide 30% of the management effort, County 55% (thus being the lead), and outreach 15%.

Subtasks of the Management Task

a. Vision: A vision statement will be developed and drafted by the CPT describing the desired future condition of the subbasin. The draft vision statement will be completed by November 2003 and available for public review. A completed vision statement will be completed by

December 2003. The CPT co-Chairs will take the lead on working with the CPT in the development of the draft vision statement as well as finalization.

b. Biological Objectives: The biological objectives will be based on the vision statement and will encompass ESA recovery goals. They will explain how the limiting factors will be addressed and be used to describe and quantify the potential changes in biological performance of the focal species. The CPT will develop the draft biological objectives with support from state and federal agencies. They will be reviewed by the Stakeholder Group before adoption and will be completed by December 2003.

c. Strategies: Proposed strategies will be developed by the CPT. Developing these strategies will occur October 2003 through February 2004. Through public participation, strategies will be prioritized and an implementation sequence will be determined to achieve the proposed biological objectives. A strategy for eliminating identified data gaps will be developed and included in the planning document.

d. Consistency with ESA and Clean Water Act Requirements: The CPT will work with the appropriate state and federal agencies to evaluate consistency with ESA requirements and contributions to the ESA recovery goals and the CWA requirements. The management plan will explain how the objectives and strategies are integrated with ESA recovery goals for listed species and CWA requirements.

e. Research, Monitoring and Evaluation: Research needs will be identified to assure that the critical assumptions in the analysis are addressed and data gaps filled. Additional monitoring and research studies that are needed for improved decision-making will be identified. This portion of the management plan will be developed by the CPT to assure that it meets decision-making needs and priorities. The Stakeholders Committee will assist with preparation of the monitoring and evaluation component.

6. Writing/Editing

The contracted writer/editor will be drafting sections of the subbasin plan as described through out this workplan. When the assessment is completed and the vision, goals, objectives and strategies are decided, the writer/editor will prepare a Preliminary Review Draft of the Subbasin Plan for initial review by CPT and lead entities. After their comments have been received, a Public Review Draft will be prepared. Following the public review, the final Subbasin Plan will be prepared.

Critical Paths and Tasks

- 1) Joint lead entities initiate process.
- 2) Public outreach/review initiated.
- 3) EDT technical training conducted.
- 4) Description of all data needs, format and schedule of data release and meeting dates delivered to participating agencies.
- 5) Development of subbasin plan template.
- 6) Draft project and program inventory completed.
- 7) Contracted assessments completed; preliminary EDT diagnosis completed; watershed goals and objectives assembled.
- 8) Key findings completed and working hypothesis completed.
- 9) Draft subbasin assessment with issues, projects and out-of-basin effects included.
- 10) Draft vision, goals and objectives for management plan developed.
- 11) Draft research, monitoring and evaluation plan.
- 12) Subbasin management plan complete.
- 13) Final subbasin plan submitted to NPCC.

Schedule

1. Development of the workplan
Completed with the approval of the NPCC
2. Public Outreach/Comment
Ongoing through out the subbasin planning process.
3. Assessment: Completed by November 30, 2003
 - a. Subbasin Overview: July 31, 2003
 - b. Species Characterization and Status: September 30, 2003
 - c. Environmental Conditions: July 31, 2003
 - d. Ecological Relationships: July 31, 2003
 - e. Limiting Factors and Conditions: May 31, 2003
 - f. Interpretation and Synthesis:
4. Inventory: Completed by September 30, 2003
5. Management Plan
 - a. Vision: Draft – October 31, 2003; Final November 30, 2003

- b. Biological Objectives: November 30, 2003
- c. Strategies: January 31, 2003
- d. Consistency with ESA and CWA:
- e. Research Monitoring and Evaluation:

6. Writing/Editing

Ongoing through out the subbasin planning process

Writing/Editing Major Milestone:

CPT Preliminary Review Draft: February 15, 2004

Public Review Draft: March 01, 2004

Close Comment Period and Incorporate Comments: April 01, 2004

Final Subbasin Plan: May 01, 2004

Deliverables

- ✓ Monthly progress reports
- ✓ Quarterly financial reports
- ✓ Draft subbasin plan
- ✓ Final subbasin plan

Budget

See attached NPCC budget submission.

c:\documents and settings\grover\my documents\methow final sbp workplan.doc (Tony Grover)



Washington Department of Fish and Wildlife
Personal services

Task	Position title		Rate	Hours	Total
					-
Assessment	WDFW	Biologist	80.00	368.00	20,384.00
Assessment	Writer	Writer/Editor	80.00	175.00	14,000.00
Inventory	WDFW	Biologist	80.00	4.00	10,192.00
Inventory	Writer	Writer/Editor	80.00	87.50	7,000.00
Management plan	WDFW	Biologist	80.00	104.00	23,283.92
Management plan	Writer	Writer/Editor	80.00	175.00	14,000.00

Task	Describe other payroll costs			Total
Assessment				
Inventory				
Management plan				

Travel

Expense	Days/nights		Rate	Total
Per diem (days)				-
Lodging (nights)				-

Air travel	From/to	Rate	# of trips	Total
Car travel	From/to	Rate/mi	# of miles	Total
Type reason here				-
				0
				0

Services and supplies

	Unit cost	Quantity	Total
			-

WDFW Subtotal	88,859.92
+ BPA approved indirect	
WDFW Total	\$ 88,859.92



Okanogan County

Personal services

Task	Position title		Rate	Hours	Total
					-
Assessment	County	LE Coordinator	65.00	196.23	\$12,755.02
Assessment	County	Outreach	65.00	117.74	\$7,653.01
Assessment	County	Contractor	65.00	100.00	\$6,500.00
Inventory	County	LE Coordinator	65.00	166.80	\$10,841.77
Inventory	County	Outreach	65.00	58.87	\$3,826.51
Management plan	County	LE Coordinator	65.00	476.32	\$30,960.96
Management plan	County	Outreach	65.00	117.74	\$7,653.01

Task	Describe other payroll costs			Total
Travel				
Expense	Days/nights	Rate		Total
Air travel	From/to	Rate	# of trips	Total
Car travel	From/to	Rate/mi	# of miles	Total
Type reason here				-
Services and supplies		Unit cost	Quantity	Total
Copies, outreach costs other than personal services		14%		27,519.80

Okanogan County Subtotal	107,710.08
+ BPA approved indirect	
Okanogan County Total	\$ 107,710.08