

JUDI DANIELSON
CHAIR
Idaho

Jim Kempton
Idaho

Gene Derfler
Oregon

Melinda S. Eden
Oregon

NORTHWEST POWER PLANNING COUNCIL

851 S.W. SIXTH AVENUE, SUITE 1100
PORTLAND, OREGON 97204-1348

Fax:

503-820-2370

Phone:

503-222-5161
1-800-452-5161

Internet:

www.nwccouncil.org

TOM KARIER
VICE-CHAIR
Washington

Frank L. Cassidy Jr.
"Larry"
Washington

Ed Bartlett
Montana

John Hines
Montana

April 2, 2003

MEMORANDUM

TO: Council Members

FROM: Lynn Palensky

SUBJECT: Grande Ronde Subbasin Planning Contract

Proposed Action

Staff recommends that the Council authorize the Executive Director to negotiate a contract for the development of the Grande Ronde Subbasin Plan pursuant to the Council's Master Contract for subbasin planning with Bonneville. The Grande Ronde workplan is approved by and submitted through the Oregon Subbasin Planning Coordination Group (OSPCG) (see attached letter). The total projected cost of completing this work is not to exceed \$219,675.

Background

The Grande Ronde Model Watershed Program (GRMWP) has been designated by the OSPCG as the lead entity for the subbasin. The fiscal agent is the Grande Ronde Model Watershed Foundation; a 501c(3) organization. The GRMWP was formed in 1992 and selected by the Council as the model watershed project in Oregon. A Board of Directors (Board) composed of local representatives and natural resource management agency personnel coordinates policy for the Program. The Board and staff, in collaboration with a Technical Team will take the lead in coordination among various groups for developing the plan. The final plan will be submitted to the Council for adoption into the Fish and Wildlife Program and to the Oregon Watershed Enhancement Board (OWEB) for consideration and adoption by OWEB under state statute. The budget includes a \$14,597 contribution from Washington. The proposed workplan and budget are attached.

Proposed Schedule and Budget

The final Grande Ronde Subbasin Plan will be submitted to the Council by May 28, 2004. The funding for this contract will not exceed for \$219,675 for FY03/04.

Grande Ronde Subbasin Workplan

Subbasin Planning Request for Funding

March 12, 2003

APPLICATION CERTIFICATION AND TRANSMITTAL

To: Northwest Power and Conservation Council
851 SW Sixth Avenue, Suite 1100
Portland, OR 97204
Attn: Contracts Officer

Thru: Oregon Subbasin Planning Coordination Group
Contact Person: Bill Blosser

From: Grande Ronde Model Watershed Foundation
10901 Island Avenue
La Grande, OR 97850
Contact Person: Lyle Kuchenbecker, Program Planner
Phone: 541-962-6590

Request:

On behalf of the Oregon Subbasin Planning Coordination Group, the Grande Ronde Model Watershed Foundation (GRMWF) will serve as the fiscal agent for the Grande Ronde Subbasin planning process. The GRMWF is the financial/contracting arm of the Grande Ronde Model Watershed Program (GRMWP). GRMWF requests contract financial assistance from the Northwest Power and Conservation Council (Council) for development of the Grande Ronde Subbasin Plan in accordance with such funding conditions as may be required by the Council and the Bonneville Power Administration (BPA). This application is prepared with full knowledge and understanding of the Council's practices and procedures described in the attachments 1-3 of the request for funding materials provided.

Project Name: Grande Ronde Subbasin Plan
Subbasin: Grande Ronde
Province: Blue Mountain

Certification:

I/we certify that to the best of our knowledge, the information provided in this application is true and correct and that the financial assistance requested will be utilized only for the purpose of carrying out the activities described in the attached statement of work.

Authorized Representative _____
Signature Date

Printed Name and Title:
Lyle Kuchenbecker, GRMWP Program Planner

APPLICANT/ORGANIZATION INFORMATION

Province name: Blue Mountain

Subbasin name: Grande Ronde

Organization name: Grande Ronde Model Watershed Foundation

Type of organization: Oregon Plan Watershed Council 501c3

Mailing Address: 10901 Island Avenue

City/Town: La Grande

State, Zip: Oregon 97850

Telephone: 541-962-6590

Email address: kuchenl@eou.edu

FAX: 541-962-6593

Organization purpose and legal status: The mission of the Board of Directors of the GRMWP is to develop and oversee the implementation, maintenance and monitoring of coordinated resource management that will enhance the natural resources of the Grande Ronde River Basin. The Grande Ronde Model Watershed Foundation has been established as a separate, but associated, entity with 501c3 status to administer funds and oversee contracts and subcontracts relevant to the activities of the GRMWP. The GRMWF is governed by a Board of Directors consisting of a subset of the members of the GRMWP Board.

Contract contact information:

Project Contract Administration Representative:

Lyle Kuchenbecker, Program Planner

Mailing Address: 10901 Island Avenue

City/Town: La Grande

State, Zip: Oregon 97850

Telephone: 541-962-6590

Email address: kuchenl@eou.edu

STATEMENT OF WORK

PROJECT OVERVIEW

The Northwest Power Act directs the Northwest Power and Conservation Council (formerly the Northwest Power Planning Council and hereafter in this document “Council”) to develop a program to protect, mitigate and enhance fish and wildlife of the Columbia River Basin and to make annual funding recommendations to the Bonneville Power Administration (BPA) for projects to implement the program. The purpose of subbasin planning is to document subbasin conditions and evaluate and define strategies that will drive the implementation of the Council’s Fish and Wildlife Program at the subbasin level.

The Grande Ronde Model Watershed Program (GRMWP) has been selected by the Oregon Subbasin Planning Coordination Group (OSPCG) to serve as lead entity in developing a comprehensive fish and wildlife restoration plan for the Grande Ronde subbasin. This comprehensive restoration plan (Subbasin Plan) will help to define goals, objectives and strategies for fish and wildlife for a 10-15 year horizon. The Subbasin Plan will be submitted to the Council for adoption under the Council’s Fish and Wildlife Program.

Located in the Blue Mountains of northeast Oregon and southeast Washington, the subbasin planning area covers most of Union and Wallowa counties and a portion of Umatilla County in Oregon and about a third of Asotin County and smaller portions of Columbia and Garfield counties in Washington. The Grande Ronde subbasin includes three watersheds – Upper Grande Ronde, Lower Grande Ronde and Wallowa. The Grande Ronde River subbasin is approximately 4,000 square-miles in size, with nearly 50% publicly owned and managed (USFS, BLM, state) and the remainder privately owned. The Grande Ronde subbasin is home to hundreds of species of fish and wildlife including six aquatic and over twenty terrestrial species with special status under the Federal Endangered Species Act (ESA).

The purpose of this planning effort will extend beyond the requirements of the Council subbasin planning process. The Subbasin Plan will be submitted to the Oregon Watershed Enhancement Board (OWEB) for consideration and adoption as the goals and priorities for watershed restoration under the state watershed council program. It is intended to be consistent with and to assist in addressing the requirements of the following: the Endangered Species Act (ESA) species recovery plans, the Federal Clean Water Act (CWA), the Oregon Plan for Salmon and Watersheds, Wy-Can-Ush-Mi Wa-Kish-Wit (Spirit of the Salmon), tribal trust responsibilities and treaty rights, and local land use plans. Additional basin management tools include the Upper Grande Ronde River Sub-Basin Total Maximum Daily Load (TMDL), Agricultural Water Quality Management Area Plans (AWQMAP), Wallowa County and Nez Perce Tribe Salmon Habitat Recovery Plan with Multi-Species Habitat Strategy, ODFW sub-basin plans and rules, and other laws and regulations. Applicable management documents for anadromous and resident salmonids on federal lands include PACFISH and INFISH.

The Grande Ronde Model Watershed Program also seeks to have the Subbasin Plan serve as the building block for ESA recovery plans now being developed by the National Oceanic and Atmospheric Administration, Fisheries (NOAA Fisheries) for listed species of anadromous fish in the subbasin and by the U.S. Fish and Wildlife Service (USFWS) for bull trout. NOAA Fisheries Local Recovery Plan Guidelines provide a framework for what is needed for a subbasin plan to meet recovery plan needs. GRMWP intends to consider the NOAA Fisheries local recovery plan guidelines in developing the subbasin plan. Based on the completed Subbasin Plan, local fish and wildlife restoration plans will be developed that will identify and prioritize actions needed to:

- Protect and enhance streamflows to meet water quality standards, instream water rights, fish and wildlife habitat objectives and existing water rights;
- Support research, monitoring and evaluation to guide existing and future restoration and management efforts in the subbasin;
- Support fish and wildlife artificial propagation measures when and where appropriate to achieve population goals;
- Protect and enhance water quality to meet tribal, state and federal standards;
- Maintain and restore the resource land base in the subbasin, consistent with acknowledged comprehensive land use plans, species recovery and the economic viability of the resource-based economy in the subbasin;
- Promote sustainability and conservation consistent with the custom, culture, economic stability and quality of life in the subbasin.

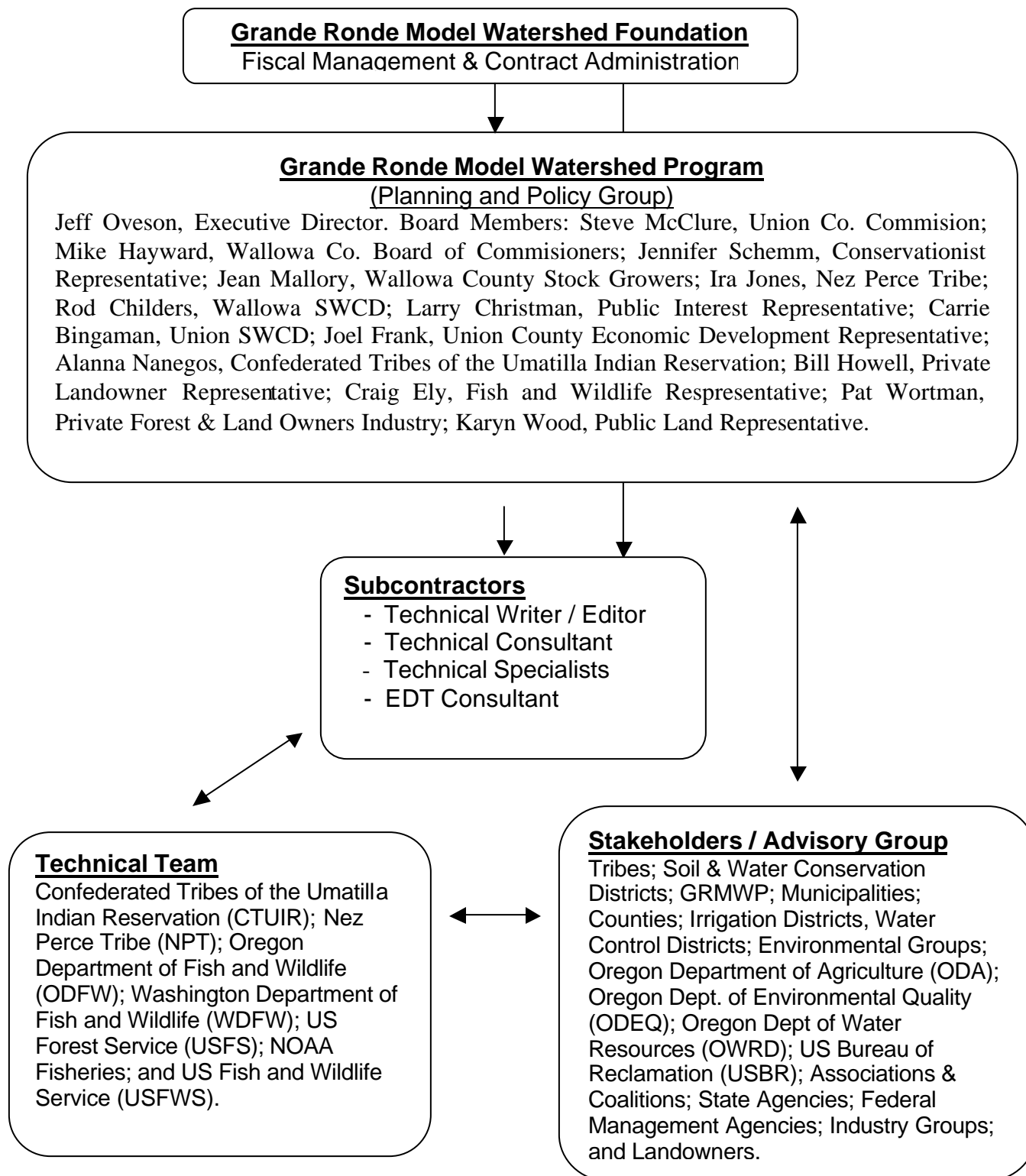
Organization. Figure 1 illustrates the proposed organization and membership for this collaborative effort.

Grande Ronde Model Watershed Program (GRMWP) and Grande Ronde Model Watershed Foundation (GRMWF): The GRMWP, in conjunction with GRMWF, its financial arm, is the lead entity for the Grande Ronde subbasin planning process. The GRMWP Board of Directors will serve as the Planning and Policy Group while the GRMWF Board of Directors will provide fiscal management and contract administration for the subbasin planning process. The GRMWP was formed in 1992 and selected by the Council as the model watershed project in Oregon. A Board of Directors (Board) composed of local representatives and natural resource management agency personnel coordinates policy for the Program. Due to its long-term presence in the Grande Ronde subbasin, GRMWP has established relationships with many of the area's stakeholders. The GRMWF was formed in 2003 to serve as the 501c3 fiscal entity in GRMWP activities.

The Grande Ronde Model Watershed Program, Board of Directors and staff, in collaboration with the Technical Team (see below), will be the most active group in this subbasin effort. They will take the lead in coordination among the groups and in

development of the vision, the biological objectives, and prioritization of subbasin strategies. Regular communication and input between GRMWP, the Technical Team, the Stakeholders/Advisory Group and subcontractors will be maintained. Meetings of the GRMWP will be held on a regular basis and will be open to the public.

Figure 1. Grande Ronde Subbasin Organizational Structure



Technical Team: This interdisciplinary team will work under the direction of the GRMWP Board; it is comprised of specialists from various basin agencies and entities. The Technical Team will analyze data and assist in the development of the Subbasin Plan. They will meet during the development of the assessment and modeling efforts, assist with completing the inventory, and contribute expertise throughout the development of the management plan. All of the Technical Team meetings will be open to the public.

Stakeholders / Advisory Group: For the purposes of the Grande Ronde Subbasin Plan, a “stakeholder” is defined as any person or entity, which resides in, derives their livelihood from, or is involved through business, research or regulatory means within the Grande Ronde Subbasin. The Stakeholders / Advisory Group includes representatives from many basin organizations, cities, counties, irrigation districts, state agencies and federal land and resource management agencies. The Stakeholders Group will meet throughout the planning process, with all meetings open to the public. Members of the Stakeholders / Advisory Group may assist the Technical Team at various times throughout the subbasin planning process.

Subcontractor(s): The Grande Ronde Model Watershed Foundation will subcontract with an experienced Technical Writer/Editor to work as principal author of the plan. In addition, GRMWF will subcontract with technical consultants and technical specialists that might be needed throughout the planning process. The GRMWP will work closely with the Technical Team, technical consultants and specialists and the Writer/Editor to compile, edit and write the various sections of the Subbasin Plan. The GRMWP may facilitate the Technical Team meetings or may contract (through GRMWF) with a skilled facilitator, and will oversee the compilation of data contributed by agency staff. All meetings of the GRMWP, Stakeholders Group and Technical Team will be open to the public, and participation by others interested in the subbasin planning effort will be encouraged.

Coordination. Participation of the GRMWP as the lead entity in the subbasin planning process assures coordination with all of the groups actively working toward fish and wildlife restoration in the Grande Ronde subbasin. The Board of Directors and staff of the GRMWP are committed to building on all of the watershed assessment and planning work that has already been done. The individuals serving on the GRMWP Board will assure that their organizations receive regular updates on the planning process so that as many of their members as possible track developments as they occur. Members of the Board will participate in Stakeholders, Technical Team and other public hearings and meetings. They will take the lead in reviewing the subbasin assessment for accuracy, developing the vision and biological objectives and prioritizing strategies. GRMWP staff will work closely with the Board, Technical Team members and Stakeholders to maintain good communication among all participants, and in coordinating and tracking project tasks.

Technical Assistance. The GRMWP has established a subbasin Technical Team that will assist in the completion of various products required in the Subbasin Plan. They will work with ODFW, NPT, CTUIR, USFS and other specialists as needed, for assistance

with fish and wildlife matters. GRMWF will contract with Mobrand Biometrics, Inc. (Mobrand), The Nature Conservancy (TNC), the Northwest Habitat Institute and/or other qualified contractor(s) to assist with the Ecosystem Diagnostic and Treatment (EDT), SITES, and the Interactive Biodiversity Information System (IBIS) modeling and analysis efforts. Additionally, technical assistance will be provided through the Oregon Coordinating Group's Technical Outreach and Assistance Team (TOAST). USFS will provide assistance on their land and resource management plans and watershed assessments, hydrology and fish and wildlife biology. The Natural Resource Conservation Service (NRCS) will provide assistance on resource inventories on private lands. Cities and counties will provide information on land use and zoning and on municipal water supply needs.

Related Planning Efforts

Extensive watershed analysis and planning has already been done in the Grande Ronde subbasin. The GRMWP will coordinate this current planning effort with the other activities, programs and planning efforts for fish, wildlife, water quality, resource use and watershed restoration. Examples include efforts through the Oregon Plan for Salmon and Watersheds, OWEB, the Northwest Forest Plan, and Oregon statewide land use planning goals. A TMDL and WQMP and AWQMAP have been developed for the Upper Grande Ronde River watershed. A TMDL is in development for the Lower Grande Ronde (in Oregon) and Wallowa watersheds with completion expected in December 2003. Other key documents include watershed assessments prepared by the watershed councils, federal land management agency land and resource management plans (including the data in the Interior Columbia Basin Ecosystem Management Project), ODFW fish and wildlife management plans, the Wallowa County-Nez Perce Tribe Salmon Habitat Recovery Plan and local zoning regulations and land use plans.

Timeframe and Schedule

Following a contract award with the Council, the active planning process is expected to begin April 2003 and conclude approximately thirteen months later in May 2004. Projected goals of the process are:

September 2003	Complete overview, assessment, including updated fish and wildlife species characterization and status, environmental conditions, ecological relationships, and limiting factors
November 2003	Complete inventory of existing activities
January 2004	Complete draft vision and biological objectives
April 2004	Complete draft management plan
May 2004	Submit final Subbasin Management Plan to Northwest Power and Conservation Council

December 2004 Plan adopted by Council after review and/or revision by ISRP and Northwest Power and Conservation Council

Public Participation and Involvement

Broad participation in the subbasin planning process is already assured through the involvement of the Grande Ronde Model Watershed Program, which represents the basin's citizens and their various interests in the watershed. The composition of the GRMWP Board also assures visibility, prestige and support for the subbasin planning effort. GRMWP staff will develop a comprehensive public outreach plan, assuring that all of those interested in fish and wildlife restoration know about the planning process and have an opportunity to participate and comment.

The GRMWP has Memoranda of Understanding (MOUs) with all of the entities represented on the GRMWP Board of Directors. As outlined in the GRMWP Bylaws, consensus is the preferred method of decision-making. When consensus cannot be reached, a simple majority will be required to make a decision. A quorum of Board members will be required to make a decision. Sixty percent of Board membership (8 of 14 members) shall constitute a quorum.

All meetings (GRMWP Board, Stakeholders/Advisory Group and Technical Team) will be open to the public, and meetings will be scheduled to brief local elected officials. Public hearing meetings will be held as needed and at key stages of the planning process to obtain public input and comments. A more detailed description of the planned public involvement activities is included in the tasks and budget. Throughout the project, information will be made available via local natural resource internet sites, including the Council and GRMWP websites.

Plan Preparation

The GRMWP will prepare the Grande Ronde Subbasin Plan following the guidance set forth in Section III.C. of the *Oregon Specific Guidance* (Oregon Subbasin Planning Project Manager, draft 2002) and in *Technical Guide for Subbasin Planners* (Council Document 2001-20). The Technical Writer/Editor will prepare chapters of the plan for review by the GRMWP. Materials provided by the Oregon Subbasin Coordinating Group (OCG) will be integrated into appropriate chapters. Technical assistance from the subbasin Technical Team will be utilized as needed. The GRMWP will focus its efforts on development of the management plan and strategies.

Fish and wildlife population and habitat management goals and objectives, including harvest, natural and hatchery production, will be developed for a 10-15 year planning outlook. Strategies to meet goals for habitat protection and restoration will be prioritized in collaboration with local stakeholders as part of the planning process. As intended by the Council, the GRMWP will rely mostly on existing information for assessment tasks, and focus the majority of effort in developing the management plan and strategies. The GRMWP, Technical Team and subcontractor(s) will work with OCG and TOAST to assemble data needed for a refined EDT model for the Grande Ronde Subbasin, and

will use model results to validate current assumptions about aquatic habitat capacity and limiting factors. They will also work with other agency specialists, including but not limited to, ODFW, WDFW, USFS, NPT and CTUIR, to refine and expand existing wildlife population and habitat information, and in identifying wildlife research needs.

Deliverables

The following subbasin planning products will be prepared with a tentative start date of April 2003 and a completion date of May 2004. Tasks and major subtasks are further summarized below.

1. Develop an EDT model for the Grande Ronde subbasin
2. Update aquatic and terrestrial assessments for the Grande Ronde subbasin (fish populations, aquatic habitat conditions, artificial production, and wildlife habitat and populations)
3. Update subbasin inventory of existing activities, projects, programs and plans.
4. Develop a management plan based on scientific information and prepared with public input through the Stakeholders Group, and coordinated with NOAA Fisheries, USFWS and ODEQ for consistency with the CWA and Endangered Species Act plans and requirements.

Planned completion of the draft Subbasin Plan is April 2004, which will allow time for public review and response to comments before the plan is submitted to the Council in May 2004.

Tasks and Major Sub-tasks

Startup

The planning process has already begun in the Grande Ronde subbasin with the selection of the Grande Ronde Model Watershed Program as lead entity in the process. The process will proceed upon signing of a contract with the Council.

GRMWF will subcontract with a qualified person(s) for one or more positions: a Technical Writer/Editor who will take the lead in drafting the Subbasin Plan; local agency technical specialists; and other technical consultants as needed throughout the planning process. GRMWF staff will develop appropriate project management systems to track and manage associated contracts. GRMWF may also subcontract with other specialists for fish and wildlife technical support services.

GRMWP staff and/or Board members will meet periodically with key public officials and newspaper editorial boards to make them aware of the planning process and to solicit their comments and concerns. While a separate website will not be created, project information will be linked with local natural resource websites including but not limited to, the GRMWP website www.fs.fed.us/pnw/modelwatershed and the Council website (www.nwcouncil.org/fw/subbasinplanning).

Assessment

1. Subbasin Overview: GRMWP staff will work with the Technical Team and Board to identify and gather the existing plans, watershed assessments and reports on the Grande Ronde subbasin. Working with these documents and the Grande Ronde Subbasin Summary, a description will be prepared for review by the Technical Team and GRMWP. The overview will describe the geographic, land ownership, biological and environmental situation in the subbasin. Information on how the Grande Ronde subbasin fits into the overall regional context will be provided by TOAST and included in the overview. The GRMWP will work with TOAST, ODFW, NPT USFS and CTUIR staff to compile more detailed information concerning fish and wildlife populations and habitat components, with a special emphasis on focal species. They will work with state and federal biologists to identify data gaps.

The overview will be completed by the end of May 2003 and reviewed by the Technical Team and GRMWP Board.

2. Species Characterization and Status: ODFW, USFS, CTUIR, NOAA Fisheries, USFWS and NPT will identify the focal species based upon ESA status, state sensitive species lists, cultural importance and other factors. The list will be reviewed by a technical review team from federal land management agencies and others, before review by the Technical Team and GRMWP. Based upon the list of focal species, GRMWP staff and the Writer/Editor will work with the agency biologists to delineate and characterize each species and the conditions needed to assure their long-term sustainability in the subbasin. This work will utilize input from the TOAST to assure consistency. USFWS, NOAA Fisheries and/or the Council will provide needed information on out-of-subbasin effects and assumptions for each focal species. The NOAA Fisheries Interior Columbia Technical Recovery Team will provide identification of independent populations within listed Evolutionarily Significant Units (ESU) and interim and final recovery goals for listed ESU's.

This step will be completed by May 2003 and will be reviewed by the Technical Team and GRMWP Board.

3. Environmental Conditions: The Technical Writer/Editor will develop the description of existing conditions based upon the Subbasin Summary, existing plans and watershed assessments. This description will be reviewed by the Technical Team and GRMWP staff to assure that it accurately provides a benchmark of the present situation. The TOAST will provide database structures, coarse screen EDT data sets, data input assistance, retrieval tools and standard report templates to use in the Plan. ODFW, USFS, NPT and CTUIR will work with TOAST and a qualified subcontractor to select stream reaches for developing the EDT model. They will work to transform state, tribal and federal stream habitat survey data into a usable format for the EDT model / reach level analysis, and will fill in the habitat attribute and population data. Other models used in the analysis may include IBIS and Sites.

The description of existing conditions will be completed by June 2003.

4. Ecological Relationships: Through assistance with Mobrand, The Nature Conservancy, Northwest Habitat Institute or other qualified consultants, local technical staff from ODFW, CTUIR, NPT and other state and federal agencies will review the key interspecies and functional relationships, processes and functions of the focal species. Selected members of the Technical Team will participate in EDT workshops. GRMWP staff and the Writer/Editor will then work with TOAST and agency staff to prepare a written assessment of habitat population interactions for the focal species. This section will then be reviewed by the Technical Team and the Board.

5. Limiting Factors and Conditions: Based upon the analysis of environmental conditions and analysis of ecological relationships, the Technical Team will identify the limiting factors and conditions that inhibit the ecological processes needed for sustainable populations of the focal species. The description and discussion of limiting factors and conditions will be reviewed by GRMWP and documented, including data sources.

Both the description of ecological relationships and limiting factors will be completed by June 2003.

6. Interpretation and Synthesis: Members of the Technical Team, with assistance from TOAST, will synthesize findings and develop a working hypothesis, characterizing species abundance and productivity, desired future conditions, and identifying opportunities and challenges. An analysis of limiting factors and conditions will be integrated with work on the ecological relationships. The resulting findings will be used to develop scenarios for the management plan. Key assumptions will be stated and key factors impeding optimal ecological function and biological performance for the focal species will be identified. Near-term opportunities will be identified based upon areas that are high priorities for protection, for restoration, and for needed reference sites. Interim strategies and actions will be described and prioritized. The assessment will be reviewed by the full Technical Team and GRMWP.

The draft assessment will be completed by the end of July 2003.

Inventory

1. Inventory of Existing Projects and Accomplishments: While the assessment is being done, GRMWP staff will work with the Technical Team to prepare an inventory of existing restoration and habitat activities in the subbasin, in addition to existing regulatory programs. A summary of the current management strategies, habitat protection projects, and on-going restoration projects will be completed. Members of the Board and Stakeholders Group, along with other organizations involved in restoration work, will be interviewed or surveyed. Maps of habitat restoration projects and other inventory elements will be created.

The Technical Team and GRMWP will review the inventory against the assessment results to identify gaps between actions taken and actions needed. A public meeting will be held to solicit comments. This process will be completed in October 2003.

Management Plan

1. Vision: The GRMWP will facilitate the development of a vision statement describing the desired future condition of the subbasin. The vision statement will be completed and available for public review by January 2004.

2. Biological Objectives: The biological objectives will be based on the vision statement and will encompass ESA recovery goals. They will explain how the limiting factors will be addressed and be used to describe and quantify the potential changes in biological performance of the focal species. The biological objectives will be developed by the Technical Team with support from ODFW, CTUIR, NPT, USFS and TOAST. They will be reviewed by the GRMWP before adoption and will be completed by January 2004.

3. Strategies: Proposed strategies will be developed by the Technical Team and reviewed by GRMWP. Developing these strategies will occur November 2003 through January 2004. Through public participation, strategies will be prioritized and an implementation sequence will be determined to achieve the proposed biological objectives. A strategy for eliminating identified data gaps will be developed and included in the planning document.

4. Consistency with ESA and Clean Water Act Requirements: GRMWP will work with FWS and NOAA Fisheries to evaluate consistency with ESA requirements and contributions to the ESA recovery goals. GRMWP will work with ODEQ to determine consistency with the CWA requirements. The management plan will explain how the objectives and strategies are integrated with recovery goals for listed species and TMDL implementation plans.

5. Research, Monitoring and Evaluation: Research needs will be identified to assure that the critical assumptions in the analysis are addressed and data gaps filled. Additional monitoring and research studies that are needed for improved decision-making will be identified. This portion of the management plan will be developed by the Technical Team, and will be reviewed by GRMWP to assure that it meets decision-making needs and priorities. TOAST will assist with preparation of the monitoring and evaluation component.

Grande Ronde Subbasin Plan

1. Public Comments and Revision of Draft Plan: A draft version of the Subbasin Plan will be completed by April 2004. A public hearing will be held, and a copy of the Subbasin Plan will be submitted for review by the Independent Scientific Review Panel (ISRP), Council, NOAA Fisheries and other interested public and advisory groups. Upon request, the GRMWP will provide outreach presentations. The final version of the Grande Ronde Subbasin Plan will be submitted to the Council in May 2004.

GRANDE RONDE SUBBASIN WORKPLAN - Statement of Work Budget Detail

Personnel Services

Task	Position Title	Rate	Hours	Subtotal	Task Total
Assessment	Lead Entity (Public involvement, project coordination, contracting, GIS)	\$ 35.00	380	\$13,300.00	\$ 78,175.00
	Technical Writer/ Editor	\$ 45.00	275	\$12,375.00	
	Technical Consultant (Data compilation, assessment, modeling)	\$ 80.00	275	\$22,000.00	
	Technical Specialists, Biologists (Technical input, data review, modeling)	\$ 40.00	375	\$15,000.00	
	EDT Consultant (EDT set-up, training and assistance)	\$100.00	155	\$15,500.00	
Inventory	Lead Entity (GIS, Database support)	\$ 35.00	110	\$ 3,850.00	\$ 21,750.00
	Technical Writer/Editor	\$ 45.00	60	\$ 2,700.00	
	Technical Consultant	\$ 80.00	80	\$ 6,400.00	
	Technical Specialists, Biologists	\$ 40.00	120	\$ 4,800.00	
	EDT Consultant	\$100.00	40	\$ 4,000.00	
Management Plan	Lead Entity	\$ 35.00	165	\$ 5,775.00	\$ 76,675.00
	Technical Writer/Editor	\$ 45.00	320	\$14,400.00	
	Technical Consultant	\$ 80.00	375	\$30,000.00	
	Technical Specialists, Biologists	\$ 40.00	350	\$14,000.00	
	EDT Consultant	\$100.00	125	\$12,500.00	
TOTAL PERSONNEL SERVICES					\$176,600.00

Travel

Expense (Subbasin Planning Team, Consultants)		Days/Nights	Rate	Total
Per diem (federal rate CONUS)		30	\$ 30.00	\$ 900.00
Lodging (federal rate CONUS)		30	\$ 55.00	\$ 1,650.00
Air Travel	From / To	Rate	# of trips	Total
Consultants	Pendleton – Portland	\$ 250.00	6	\$ 1,500.00
Car Travel		Rate / Mile	# of Miles	Total
Mileage to attend meetings and training (EDT)		\$ 0.365	15,000	\$ 5,475.00
Total Travel				\$ 9,525.00

Services and Supplies

	Unit Cost	Quantity	Total
Advertising (\$ per ad x # of ads)	\$ 50.00	10	\$ 500.00
Computer support/software/supplies (GIS, Website)	\$ 200.00	12	\$ 2,400.00
Meeting Expenses (room rate x # of meetings)	\$ 100.00	4	\$ 400.00
Postage (\$ per month x months)	\$ 100.00	12	\$ 1,200.00
Printing/copying (\$ per copy x copies)	\$ 0.10	50,000	\$ 5,000.00
Supplies (\$ per month x months)	\$ 240.00	12	\$ 2,880.00
Telephone (\$ per month x months)	\$ 100.00	12	\$ 1,200.00
Total Services and Supplies			\$ 13,580.00

Subtotal	\$ 199,705.00
Indirect (10%)	\$ 19,970.00
TOTAL	\$ 219,675.00

