

JUDI DANIELSON
CHAIR
Idaho

Jim Kempton
Idaho

Gene Derfler
Oregon

Melinda S. Eden
Oregon

NORTHWEST POWER PLANNING COUNCIL

851 S.W. SIXTH AVENUE, SUITE 1100
PORTLAND, OREGON 97204-1348

Fax:

503-820-2370

Phone:

503-222-5161
1-800-452-5161

Internet:

www.nwccouncil.org

TOM KARIER
VICE-CHAIR
Washington

Frank L. Cassidy Jr.
"Larry"
Washington

Ed Bartlett
Montana

John Hines
Montana

June 4, 2003

MEMORANDUM

TO: Council Members

FROM: Lynn Palensky

SUBJECT: Columbia Gorge Subbasin Planning and ODFW Support Contract

Proposed Action

Staff recommends that the Council authorize the Executive Director to negotiate a contract with the Oregon Department of Fish and Wildlife (ODFW) for the development of the Gorge Subbasin Plan and for support on four interstate subbasin planning efforts, pursuant to the Council's Master Contract for subbasin planning with Bonneville. The proposal has been submitted through the Oregon Subbasin Planning Coordination Group (OSPCG). The total projected cost of completing this work is not to exceed \$82,588.

Background

The ODFW has been designated by the OSPCG as the lead entity and fiscal agent for developing the Columbia Gorge Subbasin Plan. The Gorge subbasin spans Washington and Oregon, so coordination will occur among various agencies and tribes of the two states for the development of this plan. Some of the tributaries of the Gorge subbasin have been absorbed in the planning efforts of the Lower Columbia Fish Recovery Board (WA) and Fifteen Mile Creek and Hood subbasins (OR). This plan encompasses the remaining tributaries and the mainstem segment to complement the other planning efforts. The two other related tasks in the workplan include ODFW's assistance in plans being developed by other lead entities in four interstate, mainstem subbasins: Lower Mid-Columbia, Snake-Hells Canyon, Upper Middle and Lower Middle Snake. *The proposed workplan and budget are available on the Council's website at <http://www.nwccouncil.org/news/agenda.htm>.*

Proposed Schedule and Budget

The Gorge Subbasin Plan and ODFW's planning support work will be complete by May 28, 2004. The funding for this contract will not exceed for \$82,588 for FY03/04.

Oregon Department of Fish and Wildlife
Statement of Work
SUBBASIN PLAN DEVELOPMENT AND SUPPORT

Task 1. Columbia Gorge Subbasin Plan Development

Background

The Northwest Power Act directs the Northwest Planning Council (Council) to develop a program to protect, mitigate, and enhance fish and wildlife of the Columbia River Basin and to make annual funding recommendations to the Bonneville Power Administration for projects to implement the program. The purpose of subbasin planning is to document subbasin conditions and evaluate and define strategies that will drive the implementation of the Council's Fish and Wildlife Program at the subbasin level. NOAA Fisheries and U.S. Fish and Wildlife Service (USFWS) will also use the plan in their recovery planning efforts for threatened and endangered species. The plan will be evaluated for consistency with the Clean Water Act, the Endangered Species Act, and federal treaty and trust responsibilities with the basin Native American Tribes. The final subbasin plan will be submitted to the Council for adoption into its 2000 Fish and Wildlife Program. The Council will use the procedures and criteria required by the Northwest Power Act in evaluating the proposed plan.

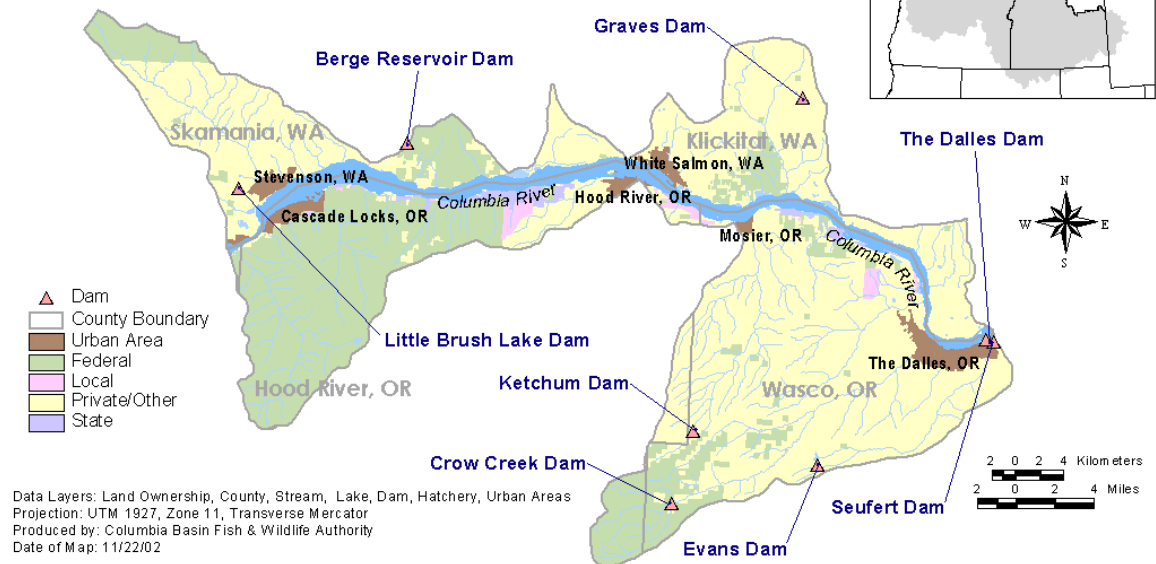
The Oregon Department of Fish and Wildlife (ODFW) will develop a subbasin plan following the guidance set forth in *Technical Guide for Subbasin Planners* (Council Document 2001-20), the National Marine Fisheries Service *Local Recovery Plan Guidelines* (NMFS, ca. June 2002), and *Oregon Specific Guidance* (Oregon Subbasin Planning Project Manager, draft 2002).

Recognizing the differences between mainstem segment subbasins and the other subbasins, OCG adopted special guidance for developing plans for mainstem subbasins. This guidance indicates that for the fish assessment portion of the subbasin assessment, the analytical tools available for assessing fish habitat in tributary subbasins (EDT, SWAM, QHA, etc.) are typically not applicable to mainstem areas and that, as a result, simplified assessments that rely principally on professional judgment are warranted. The guidance stresses that the principal objective of most mainstem subbasin plans is to identify opportunities for increasing or sustaining production via habitat protection and restoration, as described in the October 2001 Technical Guide. The Work Plan for this subbasin plan has been developed consistent with that guidance. The work plan follows the outline developed by the Council, but in specific areas, which are noted in the work plan, adjusts the analysis in order to avoid duplication of efforts in the other subbasins. Using this approach, the Council should be able to combine the mainstem subbasin plan with the other subbasin plans into Provincial and Basin-wide plans.

Definition of the Subbasin

As noted above, the Columbia Gorge subbasin was defined after subtracting out the areas that were assigned to other subbasins that feed into the Columbia in this reach, including such subbasins as the Hood River, 15 Mile, and Wind. The subbasin is defined as an impoundment bounded by Bonneville Lock and Dam at river km 235 and The Dalles Dam at river km 308, located about 64 km east of Portland and Vancouver. The reservoir is entirely within the Columbia River Gorge National Scenic Area. For purposes of this subbasin plan, the subbasin has been further reduced in size by a decision to enlarge the coverage of the Hood River and 15 Mile subbasin plans to include territory originally included by the Council in the Gorge subbasin.

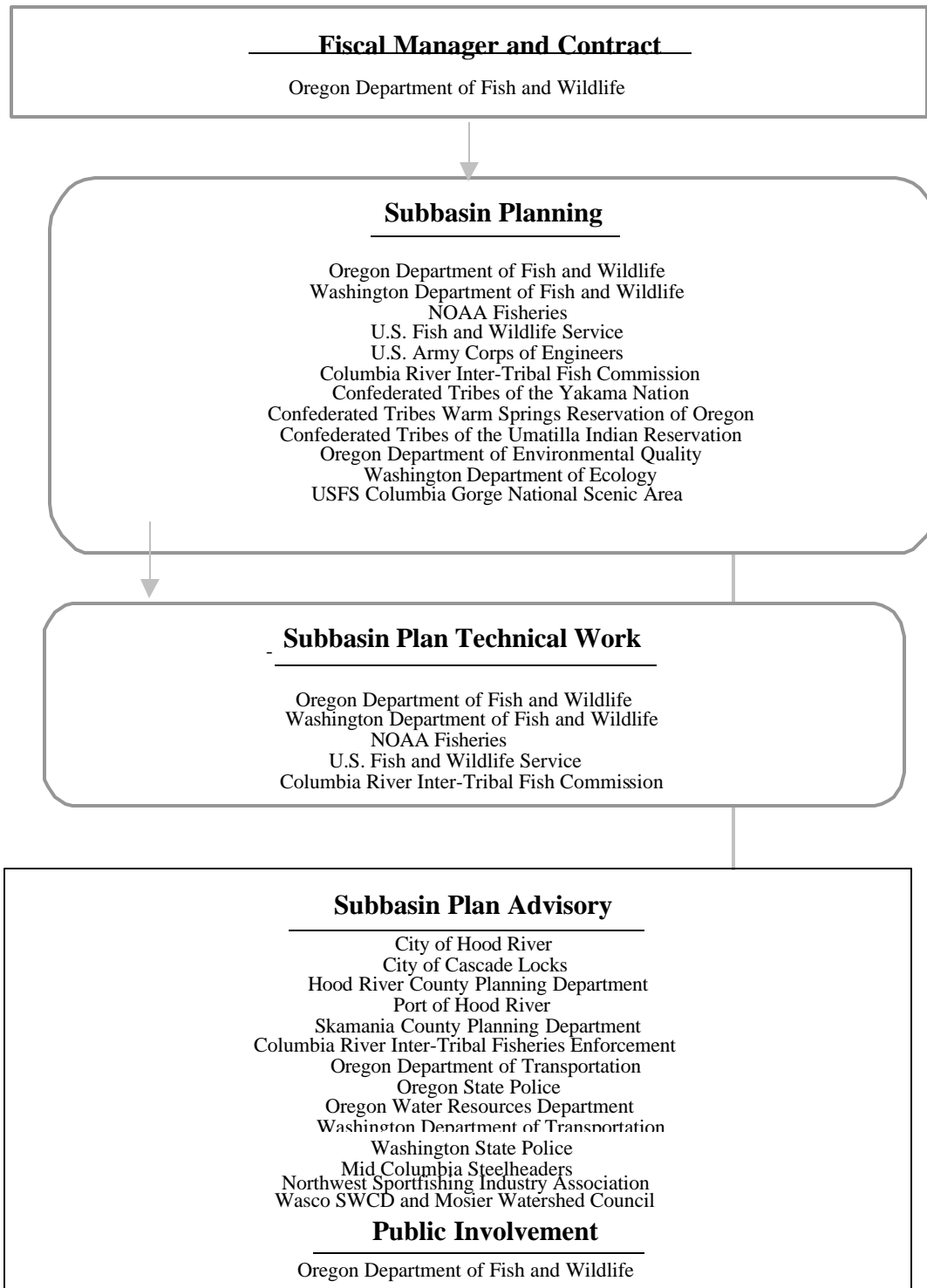
Columbia Gorge Province Columbia Gorge Subbasin



Subbasin Planning Organization

ODFW will rely on the organizations shown in the chart below in developing the subbasin plan. ODFW will also work with these organizations to determine the necessity of adding additional members to each team to ensure success of the project. A significant aspect of this planning activity will be coordination with the state of Washington. The State of Washington will review and approve all sections of the plan so that the final plan submission has the endorsement of both states. A basis assumption of the work plan is that the State of Washington will provide information on the minor tributaries in Washington, and terrestrial habitat and species information.

Columbia Gorge -- Organizational Chart



Deliverables and Work Products

The following subbasin planning products will be prepared with a completion date of May 28, 2004. Tasks and major subtasks are further summarized below according to plan elements in the

Technical Guide for Subbasin Planners (Council Document 2001-20) and a Project Schedule is provided.

Tasks and Major Sub-tasks

1. **Start Up:** The Fiscal Manager/Contract Administrator will meet with the Subbasin Planning Team, the Subbasin Plan Technical Work Group, and the Subbasin Plan Advisory Team to review membership and determine if others should be recruited to the teams. ODFW will meet with the Subbasin Planning Team to the need for subcontracts with technical team members. ODFW may subcontract certain tasks for fish and wildlife technical support services, and a GIS contractor for mapping assistance. ODFW will organize activities to inform and involve as necessary local stakeholders and interested parties to inform them of the beginning of the planning process and solicit participation.

Assessment

2. **Subbasin Overview:** ODFW will work with the Subbasin Planning Team to compile existing plans, assessments and updated reports on the subbasin. The state of Washington will provide information on the minor tributaries and terrestrial conditions on the Washington side of the subbasin. Working with these documents and the Subbasin Summaries, ODFW will prepare the subbasin descriptions for review by the Subbasin Planning Team. The overview will describe the geography, land ownership, biological and environmental situation in the basin. ODFW will also work with the Subbasin Planning Team to compile wildlife population and habitat information, and work with state and federal biologists to identify wildlife data gaps or necessary research. With respect to the treatment of small and intermittent tributaries whose importance mainly derives from their connection to the mainstem reach, the strategy will be to consider these as components of the mainstem reach and not to conduct independent habitat assessments of them.
3. **Species Characterization and Status:** Fish focal species will be limited to those species (and stocks/populations) that inhabit the area for a significant period of time during one or more life stages and rely on the habitat features provided within the mainstem reach to fulfill life stage-specific biological needs. In other words, fish stocks that simply use the reach as a highway to move from point A to point B will not be considered as focal species. Using the above definition of a focal species, ODFW will work with the Subbasin Plan Technical Work Group to select fish focal species based on these characteristics:
 - Species that are resident to the mainstem reach. An example would be resident lamprey or sturgeon.
 - Adfluvial resident species that reside principally in a tributary subbasin but utilize the mainstem for one or more life stage.
 - Anadromous stocks and populations that depend on the mainstem reach. Within the anadromous zone, a key function of the mainstem team is to determine a) which anadromous species (more precisely which stocks or populations) move through the area and b) of these, which rely on the reach to meet critical life stage-specific biological needs.

Wildlife focal species will be selected in accordance with the guidance on wildlife assessments provided by the Oregon Subbasin Planning Coordination Group. This work will principally be done by the NHI under contract to the Oregon Subbasin Planning Coordination Group.

Based upon the list of focal species, ODFW will work with the Subbasin Plan Technical Work Group to delineate and characterize each species and the conditions needed to ensure their long-term sustainability in the planning area. This work will utilize input from the TOAST to ensure regional consistency.

4. **Environmental Conditions:** ODFW will work with the Subbasin Planning Team to develop the description of existing conditions based upon the Subbasin Summary and existing plans and watershed assessments.
5. **Ecological Relationships:** ODFW will work with the Subbasin Plan Technical Work Group to analyze the key interspecies relationship and key functional relationships, processes and functions of the focal species and prepare a written assessment of habitat population interactions for the focal species.
6. **Limiting Factors and Conditions:** The primary focus of this analysis will be to identify factors that affect productivity, mortality, and survival of each focal species. These would typically be physical habitat, water quality and quantity, and interaction with other species (predation and competition). Other factors may include effects of hatcheries and in-river harvest. Hatcheries and harvest will be considered when these have a direct relationship to the mainstem reach. Hydropower and storage dams are, of course, major factors in determining the productivity, mortality, and survival of fish in mainstem subbasins. Issues related to passage of anadromous salmonids will be left to other forums. However, to the extent that a dam or reservoir has an effect on actual use of habitat within the mainstem subbasin (upstream or downstream of the dam) these effects will be considered.
7. **Interpretation and Synthesis:** The principal products will be a) a determination of key limiting factors and b) the identification of areas where protection and/or restoration of environmental features or processes may be warranted. A synthesis of findings will be developed, including generating a *working hypothesis*, characterizing species abundance and productivity, desired future conditions, and identifying opportunities and challenges. The analyses of limiting factors and conditions will be integrated with work on the ecological relationships. All of the above information and analysis will be used to develop management plan alternatives. Key assumptions and the key factors that impede optimal ecological function and biological performance for focal species will be identified. Near term opportunities will be identified based upon areas that are high priorities for protection and high priority areas for restoration. Interim strategies and actions will be described and prioritized. This work will be done by the Subbasin Planning Team together with the Technical Work Group, with help as needed from the TOAST.

Inventory

8. **Inventory of Existing Projects and Past Accomplishments:** ODFW will work with the Subbasin Planning Team to summarize existing restoration and habitat protection projects, programs, plans, and ordinances over the last 5 years within the planning area. This will be done by updating subbasin summary inventory information and soliciting information from Subbasin Plan Advisory Committee members, and other sources. Maps of habitat restoration projects and other inventory elements will be created. ODFW will work with the Subbasin

Planning Team and the Subbasin Plan Technical Work Group to review the inventory against the assessment results to identify gaps between actions taken and actions needed.

Management Plan

9. **Vision:** ODFW will work with the Subbasin Planning Team, Subbasin Plan Technical Work Group, and Subbasin Plan Advisory Committee to develop and write a draft vision statement that describes the desired future condition of the planning area.
10. **Biological Objectives:** ODFW will work with the Subbasin Planning Team and the Subbasin Plan Advisory Committee to develop biological objectives based on the vision statement. Biological objectives will explain how the limiting factors will be addressed and describe and quantify the resulting changes in biological performance of the focal species. The biological objectives will be developed with support from TOAST.
11. **Subbasin Strategies:** ODFW will work with the Subbasin Planning Team to develop proposed strategies. Through the Subbasin Plan Advisory Committee and the public participation process, the strategies will be prioritized and an implementation sequence determined. The strategies will be directly linked to achieving the biological objectives.
12. **Consistency with ESA and Clean Water Act Requirements:** Beginning as early as possible in the process, ODFW will facilitate discussions among the Subbasin Planning Team, the USFWS, and NOAA Fisheries to evaluate consistency with ESA requirements and with DEQ to determine consistency with Clean Water Act requirements. The plan will explain how the objectives and strategies are integrated with recovery goals for listed species and TMDL implementation plans.
13. **Research, Monitoring, and Evaluation:** ODFW will work with the Subbasin Plan Technical Work Group to identify research needs to ensure that critical assumptions in the analyses are addressed and data gaps filled. Additional monitoring and research studies needed for improved decision-making will be identified. The Subbasin Planning Team and the Subbasin Plan Advisory Committee will review this portion of the plan to ensure that it meets decision-making needs and priorities. The TOAST will assist with preparation of the monitoring and evaluation component.

Deliverables and Work Products

The following subbasin planning products will be prepared, as specified in the *Technical Guide for Subbasin Planners* (Council Document 2001-20).

1. An aquatic and terrestrial subbasin assessment for the Columbia Gorge Subbasin and its tributaries (fish populations, aquatic habitat conditions, and wildlife habitat and populations).
2. Subbasin inventory
3. Management plan based on scientific information and prepared with local “stakeholder” and public input, and coordinated with NOAA Fisheries, US Fish and Wildlife Service (USFWS), local watershed councils in Washington and Oregon, and the Oregon Department of Environmental Quality (ODEQ) and Washington Department of Ecology for consistency with expected ESA and Clean Water Act plans and requirements.

Task 2. Lower Mid-Columbia Subbasin Plan Support

Background

The subbasin plan for this subbasin will be developed by the State of Washington. The role of ODFW will be to support this planning effort as described below. Work on this task will occur only after a contract is in place for the subbasin plan development from a lead entity in Washington.

Work Tasks and Deliverables

1. Planning Teams: participate as a member of the Planning Team and Technical Team for the subbasin plan.
2. Subbasin Assessment: provide information in a format requested by the State of Washington on terrestrial species in the Oregon territory covered by the plan, not including the Willow Creek drainage that will be developed as part of the Umatilla Subbasin Plan. In addition, provide information on aquatic species on the minor tributaries as requested.
3. Inventory: provide information in a format requested by the State of Washington on existing restoration and habitat protection projects, programs, plans, and ordinances over the last 5 years within the planning area.
4. Management Plan: participate fully in development of the management plan to provide the Oregon perspective on key plan elements.
5. Peer Review: review and provide timely comments on the subbasin assessment, inventory, and management plan to ensure Oregon's concurrence with scientific analyses and to ensure consistency with Oregon's policies and procedures.

Task 3. Snake Subbasin Plan Support

Background

Three subbasin plans will be developed for mainstem reaches of the Snake that involve lands in Oregon, the Snake-Hells Canyon, the Upper Mid-Snake and the Lower Mid-Snake. These plans are being developed under the supervision of the State of Idaho. The role of ODFW will be to support this planning effort as described below.

Work Tasks and Deliverables

1. Planning Teams: participate as a member of the Planning Teams and Technical Teams for the three Snake subbasin plans.
2. Subbasin Assessment: provide information in a format requested by the State of Idaho on terrestrial species in the Oregon territory covered by the plan. In addition, provide information on aquatic species on the minor tributaries as requested.
3. Inventory: provide information in a format requested by the State of Idaho on existing restoration and habitat protection projects, programs, plans, and ordinances over the last 5 years within the planning area.

4. Management Plan: participate fully in development of the management plan to provide the Oregon perspective on key plan elements.
5. Peer Review: review and provide timely comments on the subbasin assessment, inventory, and management plan to ensure Oregon's concurrence with scientific analyses and to ensure consistency with Oregon's policies and procedures.

ODFW BUDGET

TASK 1

A. Personnel		Months	Rate	Salary	Fringe
Ward	2820977	2	\$5,229	\$10,458	\$3,483
Tinus	2820205	4	\$3,369	\$13,476	\$5,121
Morrell	2820009	1.5	\$1,857	\$2,786	\$1,838
Other Contractor		115 hrs	\$75/hr	8,625	0
				\$35,345	\$10,442
Subtotal					\$45,787

B. Travel					
Car rental		1.5	months @	\$250	\$375
Mileage		2000	miles @	\$0.20	\$400
Subtotal					\$775

C. Services and Supplies					
Software					\$250
Supplies (\$62.50/mo x 12 mo)					\$750
Network Costs (\$20.84/mo x 12 mo)					\$250
Telephone/Fax (\$20.84/mo x 12 mo)					\$250
Photocopier (4166 copies at .06)					\$250
Utilities ((\$20.84/mo x 12 mo)					\$250
Subtotal					\$2,000

INDIRECT @23.6% OF DIRECT
 ODFW Salaries and Direct Costs
 (not including subcontractor effect.
 7/1/03)

\$9,426

TOTAL BUDGET FOR TASK 1

\$57,988

ODFW BUDGET (continued)

TASK 2

A. Personnel		Months	Rate	Salary	Fringe
Ward	2820977	0.5	\$5,229	\$2,615	\$871
Tinus	2820205	1	\$3,369	\$3,369	\$1,280
Morrell	2820009	0.25	\$1,857	\$464	\$306
				\$6,448	\$2,457
Subtotal					\$8,905
B. Travel					
Car rental		0.25	months @	\$250	\$63
Mileage		1000	miles @	\$0.20	\$200
Lodging		4	nights@	\$55	\$220
Per Diem		4	days@	\$30	\$120

Subtotal	\$603
C. Services and Supplies	
Supplies (\$10.42/mo x 12 mo)	\$125
Network Costs (\$6.25/mo x 12 mo)	\$75
Telephone/Fax (\$6.25/mo x 12 mo)	\$75
Photocopier (1250 copies at .06)	\$75
Utilities (\$6.25/mo x 12 mo)	\$75
Subtotal	\$425
TOTAL DIRECT COSTS	\$9,933
INDIRECT @23.6% OF DIRECT	\$2,345
TOTAL BUDGET FOR TASK 2	\$12,278

TASK 3

A. Personnel		Months	Rate	Salary	Fringe
Ward	2820977	0.5	\$5,229	\$2,615	\$871
Tinus	2820205	1	\$3,369	\$3,369	\$1,280
Morrell	2820009	0.25	\$1,857	\$464	\$306
				\$6,448	\$2,457

Subtotal \$8,905

B. Travel					
Car rental		0.25	months @	\$250	\$63
Mileage		1000	miles @	\$0.20	\$200
Lodging		4	nights@	\$55	\$220
Per Diem		4	days@	\$30	\$120

Subtotal \$603

C. Services and Supplies					
Supplies (\$10.42/mo x 12 mo)					\$125
Network Costs (\$6.25/mo x 12 mo)					\$75
Telephone/Fax (\$6.25/mo x 12 mo)					\$75
Photocopier (1250 copies at .06)					\$75
Utilities (\$6.25/mo x 12 mo)					\$75

Subtotal \$425

TOTAL DIRECT COSTS	\$9,933
INDIRECT @23.6% OF DIRECT	\$2,345
TOTAL BUDGET FOR TASK 3	\$12,278

TOTAL PROJECT BUDGET (TASKS 1-3) \$82,544