

Melinda S. Eden
Chair
Oregon

Joan M. Dukes
Oregon

Frank L. Cassidy Jr.
"Larry"
Washington

Tom Karier
Washington



Jim Kempton
Vice-Chair
Idaho

Judi Danielson
Idaho

Bruce A. Measure
Montana

Rhonda Whiting
Montana

August 2, 2005

MEMORANDUM

TO: Council Members

FROM: Bruce Suzumoto

SUBJECT: Harvest and adult returns update

Cindy LeFleur of the Washington Department of Fish and Wildlife will brief the Council on the 2005 summer Chinook season and the fall Chinook forecast and harvest management plan. In order to keep information as current as possible, Ms. LeFleur will distribute her presentation at the Council meeting.

w:\bs\2005\council meetings\080905\harvest memo 080205.doc

Anadromous Fish Update

Fall Chinook

- ❑ Management Guidelines
- ❑ Stocks/Distribution
- ❑ 2005 Forecasts
- ❑ Fall Season Fisheries

Summer Season



Presented by:

Cindy LeFleur

Washington Department of Fish and Wildlife



NWPCC, August 2005

Management Guidelines

- ❑ The “2005-2007 Interim Management Agreement for Upriver Chinook, Sockeye, Steelhead, Coho, and White Sturgeon” was developed by the parties to *United States v Oregon* and provides specific constraints and guidelines for fall season fisheries.
- ❑ Management and allocation guidelines are also in place for non-Indian fisheries, which were developed during the North of Falcon process.



Fall Chinook Stocks

- ❑ Fall Chinook enter the Columbia River from late July through October. Bonneville dam passage peaks in early September.
- ❑ The fall Chinook run is comprised of 5 major components-LRH, LRW, BPH, MCB and URB stocks.
- ❑ Minor run components include LRB and SAB stocks.



Fall Chinook Stocks

- ❑ LRH and BPH stocks are referred to as tules and LRW, MCB and URB stocks are referred to as brights.
- ❑ The upriver run consists of URB, BPH and MCB stocks.
- ❑ The upriver run is subject to treaty Indian/non-treaty Indian allocation requirements.



Bonneville Dam Viewing Window

Bright stock

Tule stock

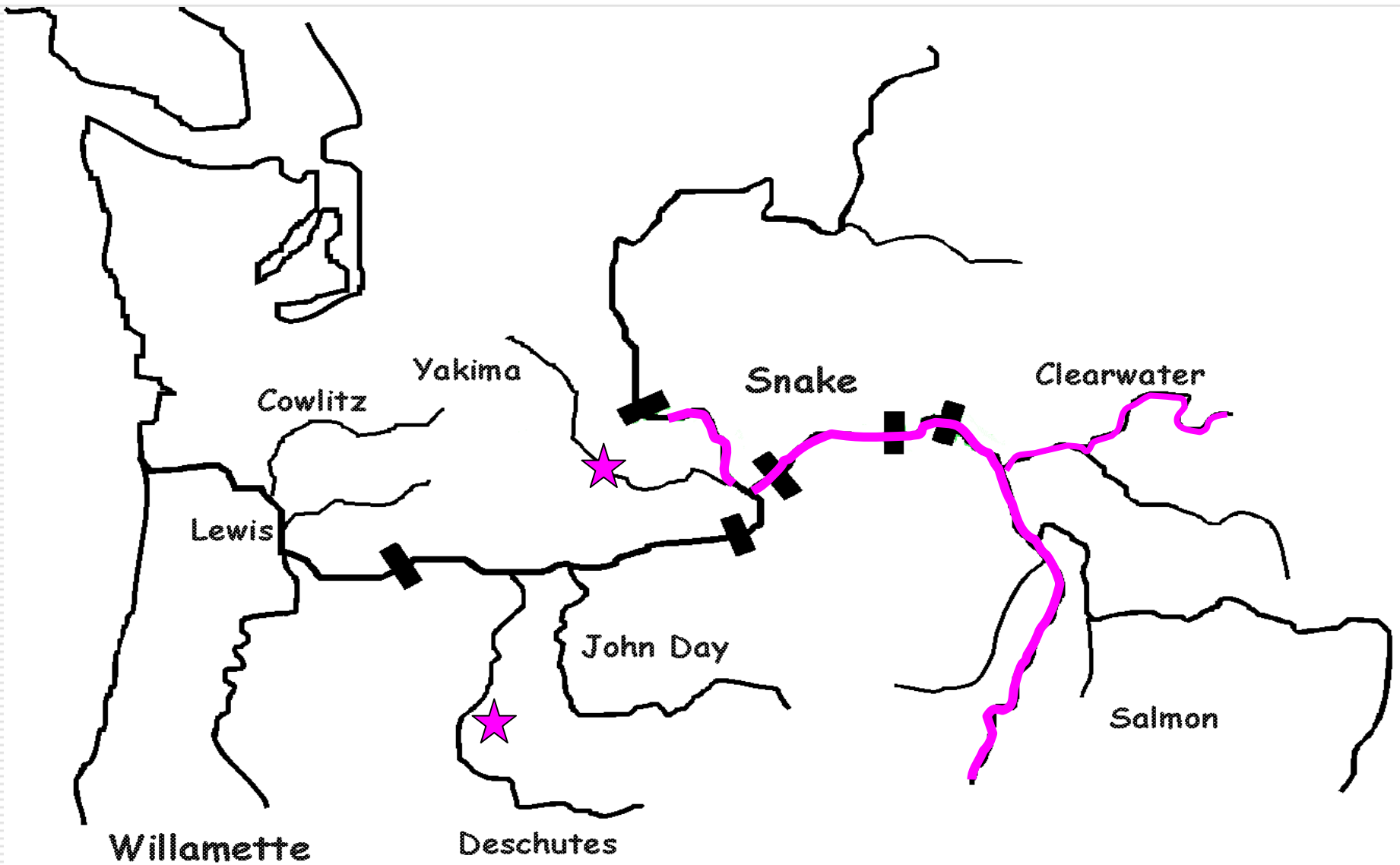
1. 3. 2000

Upriver Bright (URB)

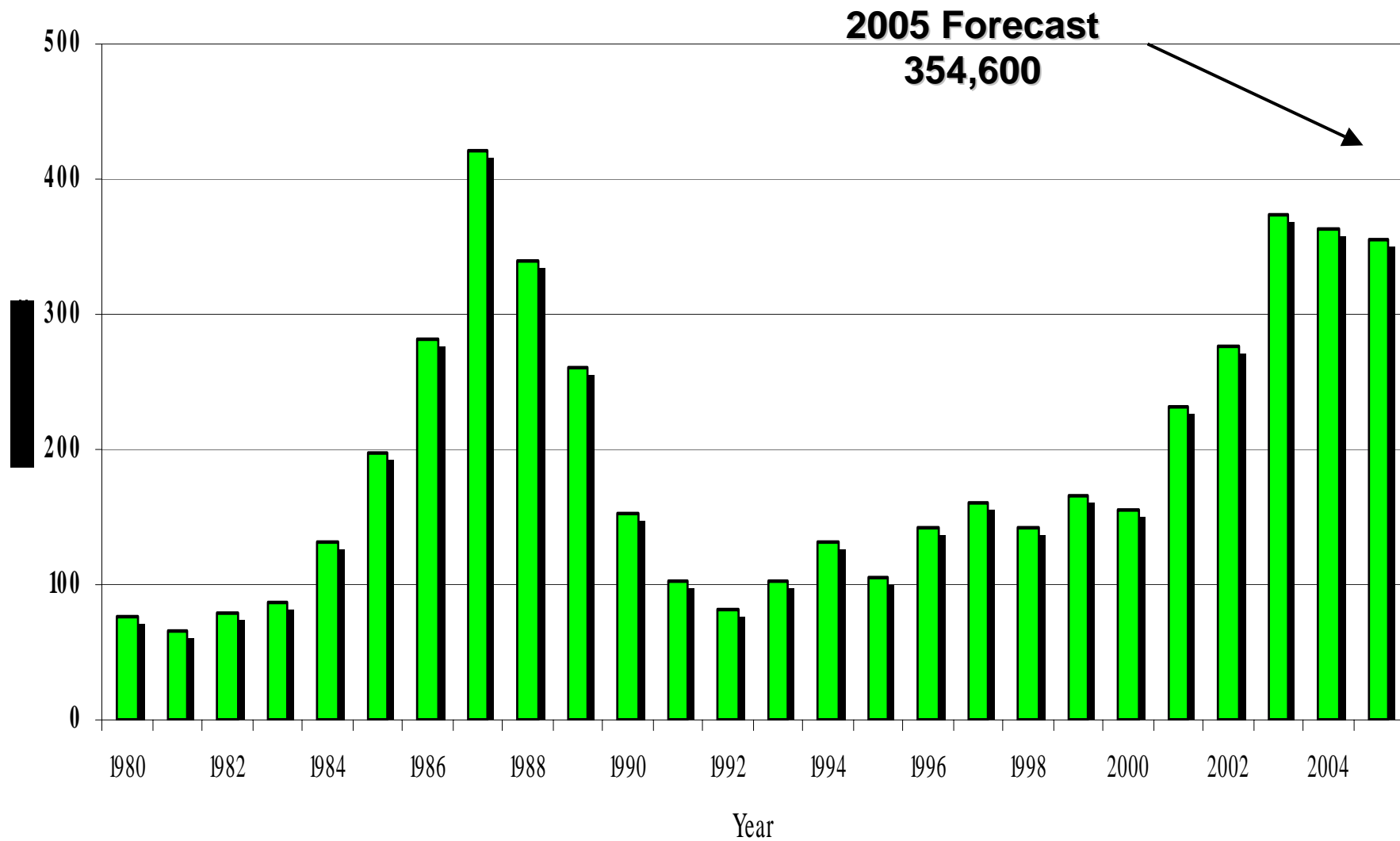
- ❑ Mostly wild fish.
- ❑ Destined for Hanford Reach, Snake River, Yakima River, Deschutes River.
- ❑ Includes Priest Rapids Hatchery, Lyons Ferry Hatchery.
- ❑ ESA-listed component is Snake River Wild.
- ❑ Spawning peaks in November.



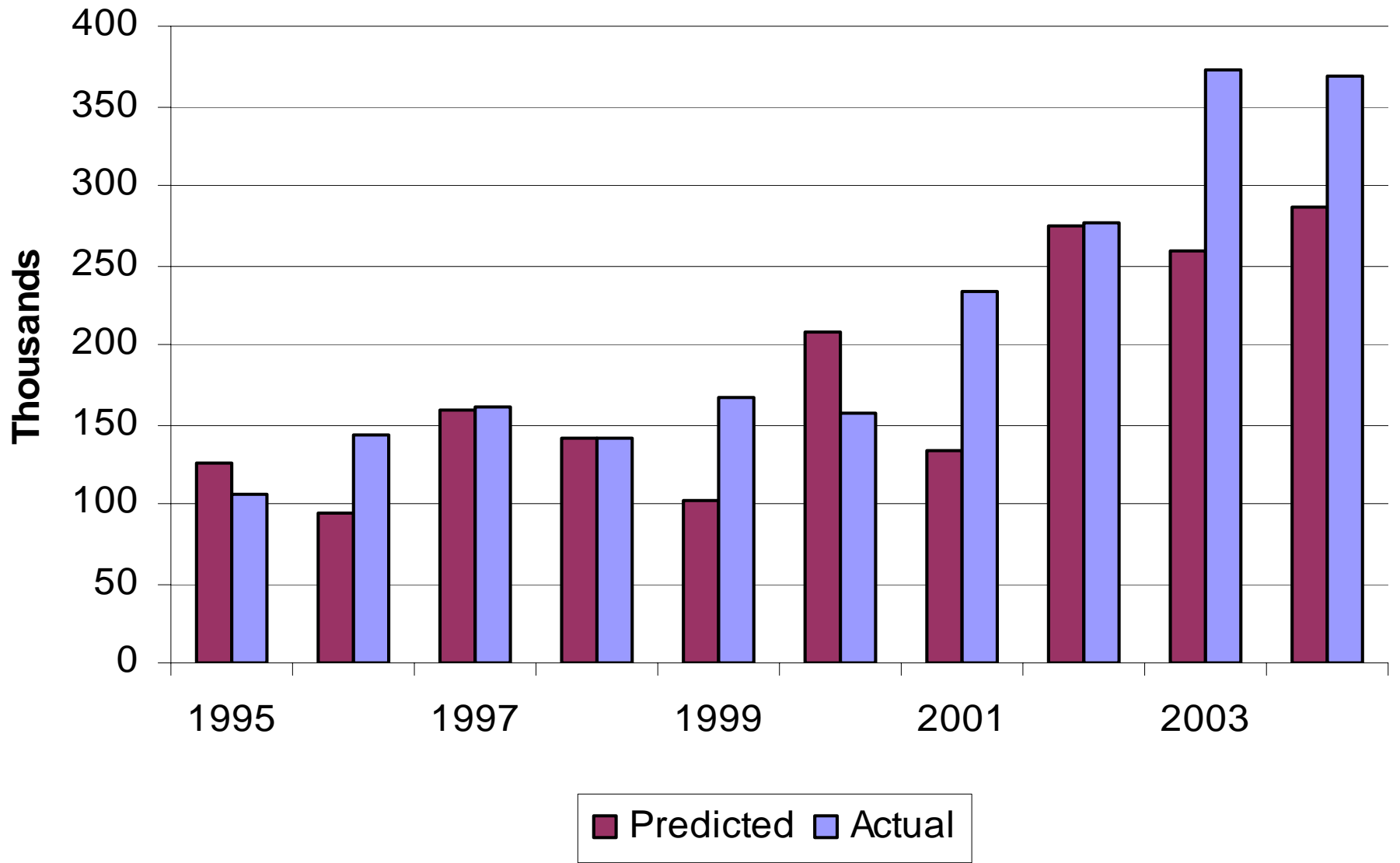
URB Distribution



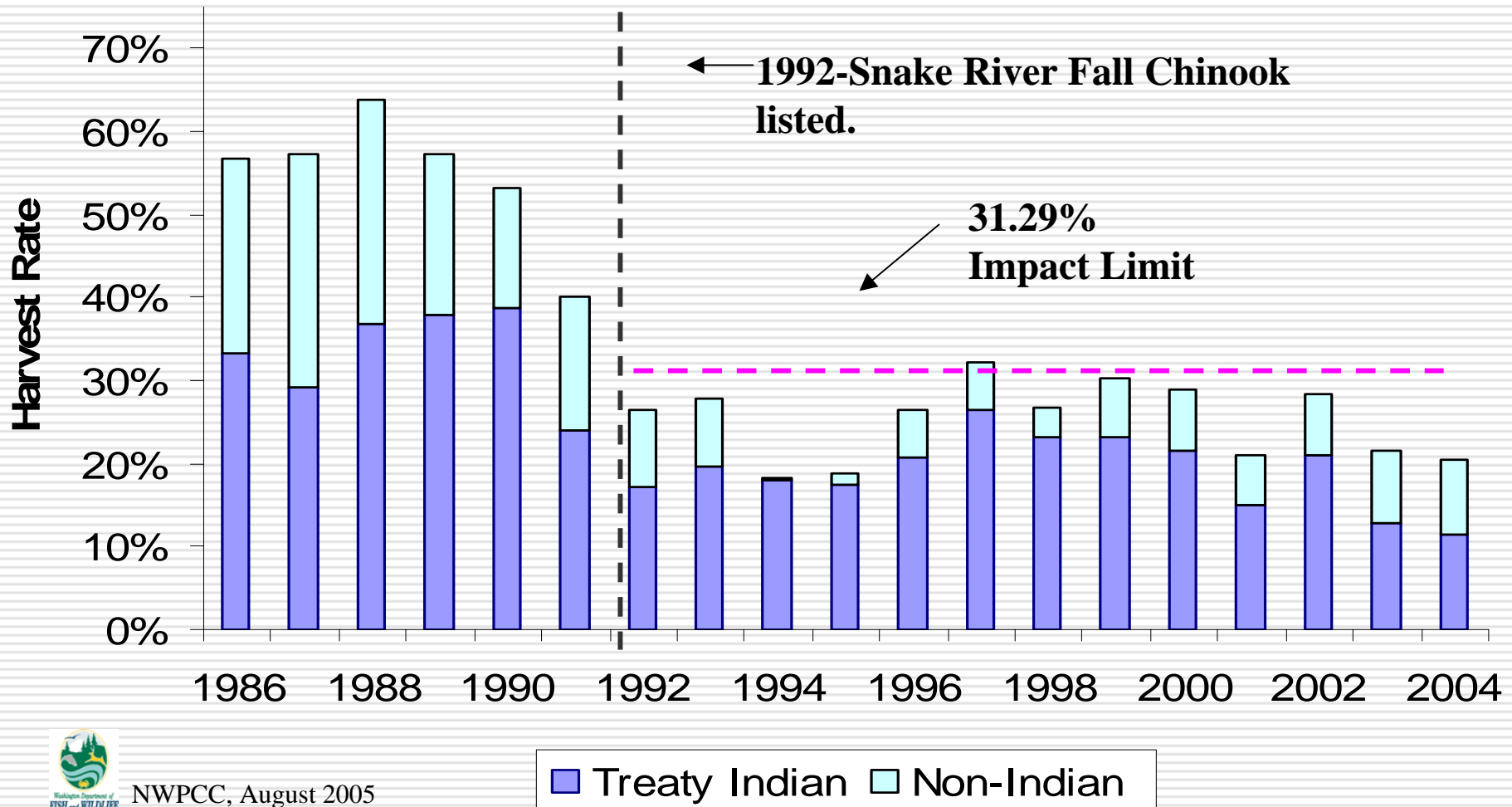
Upriver Bright Fall Chinook URB



URB Predicted vs Actual



Snake River Wild Harvest Rates

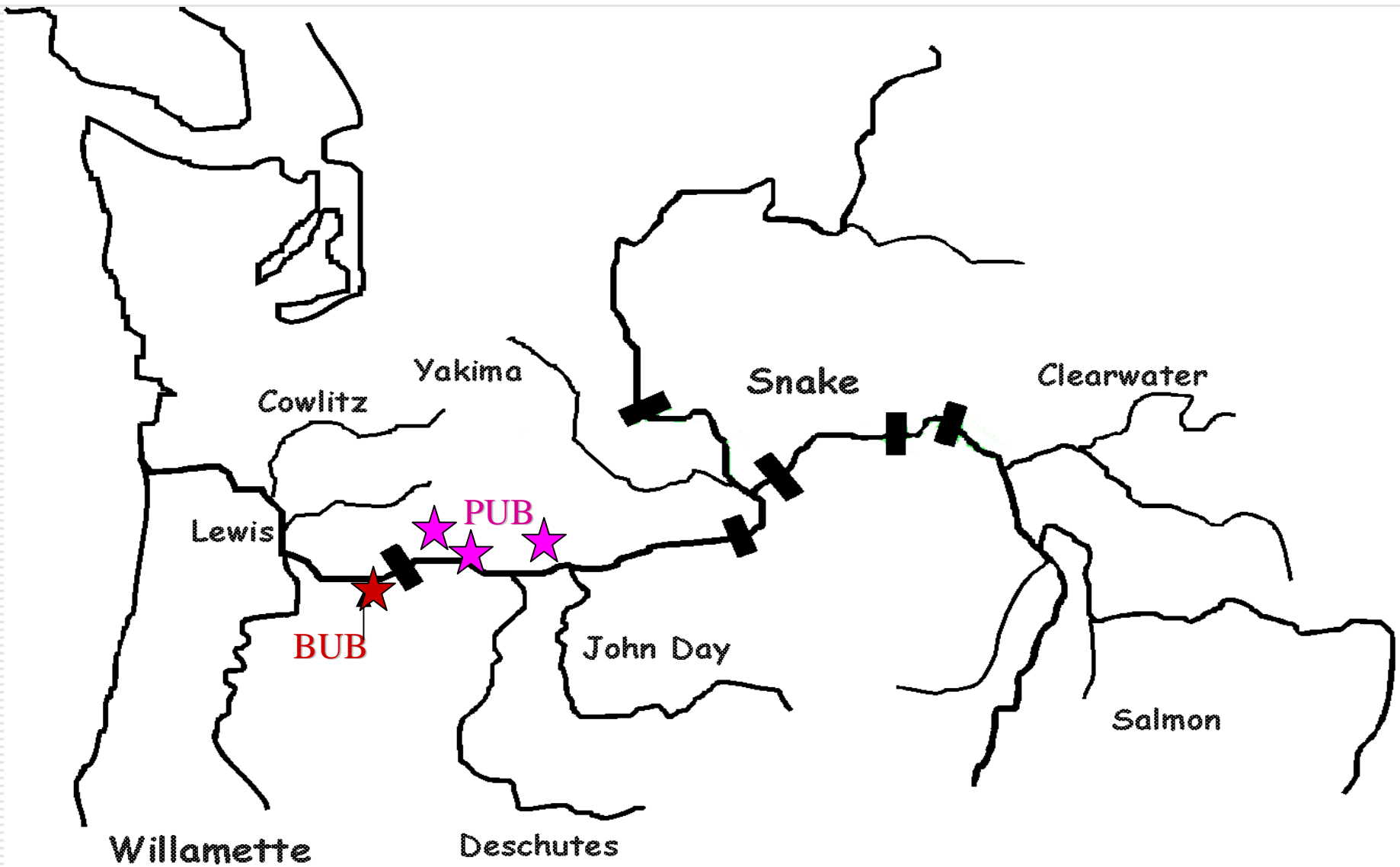


Mid Columbia River Bright (MCB)

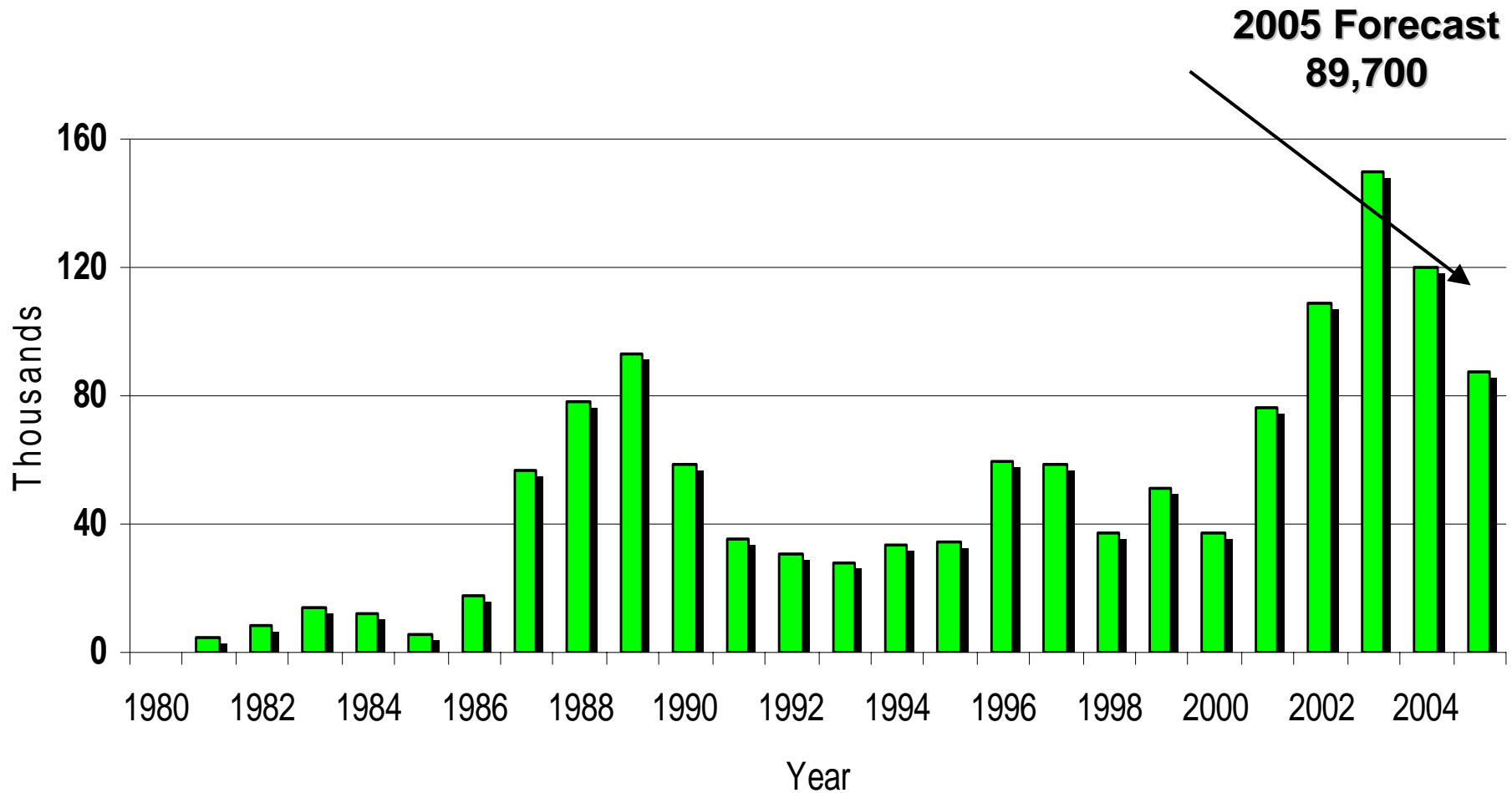
- ❑ Originated from URBs.
- ❑ Two components (BUB and PUB).
- ❑ Destined primarily for hatcheries above Bonneville Dam (PUB).
- ❑ Fish produced in Little White Salmon, Klickitat, Umatilla rivers.
- ❑ Includes Bonneville Hatchery (BUB).



MCB Distribution



Mid Columbia Bright Fall Chinook MCB

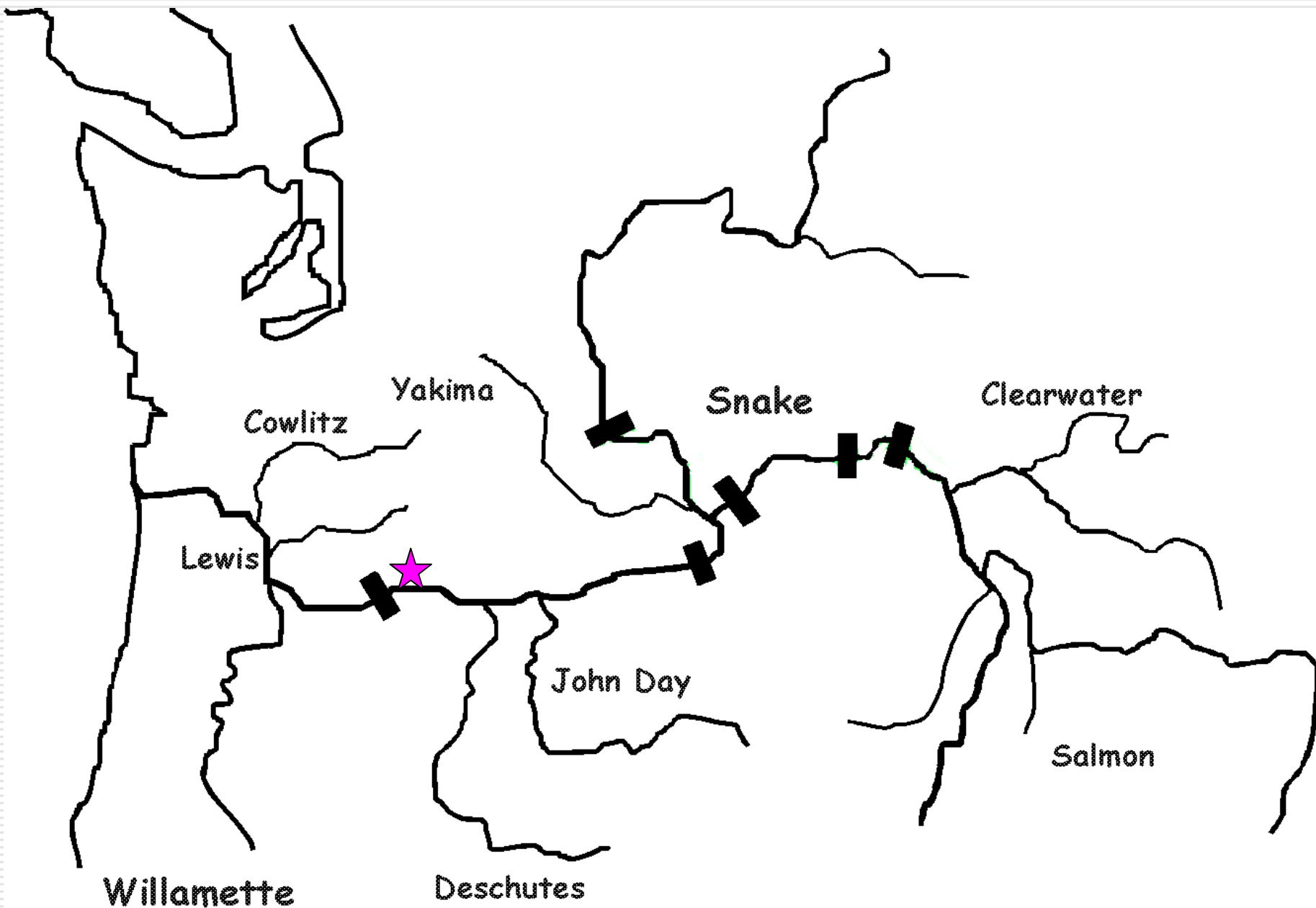


Bonneville Pool Hatchery (BPH)

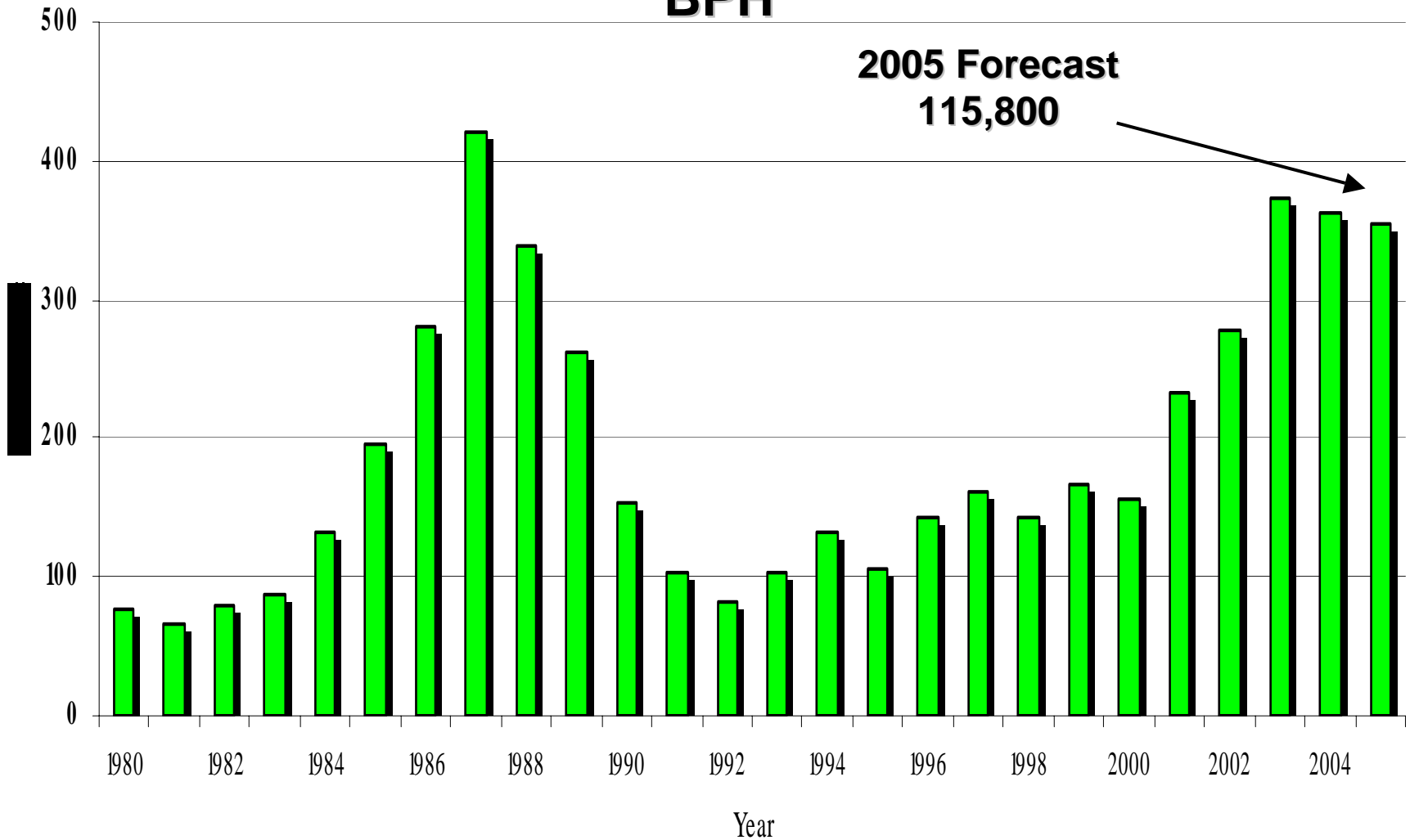
- ❑ Destined primarily for Spring Creek Hatchery.
- ❑ Natural production occurs in Bonneville Pool tributaries.
- ❑ Spawning occurs in September/October.



BPH Distribution



Bonneville Pool Hatchery Fall Chinook BPH

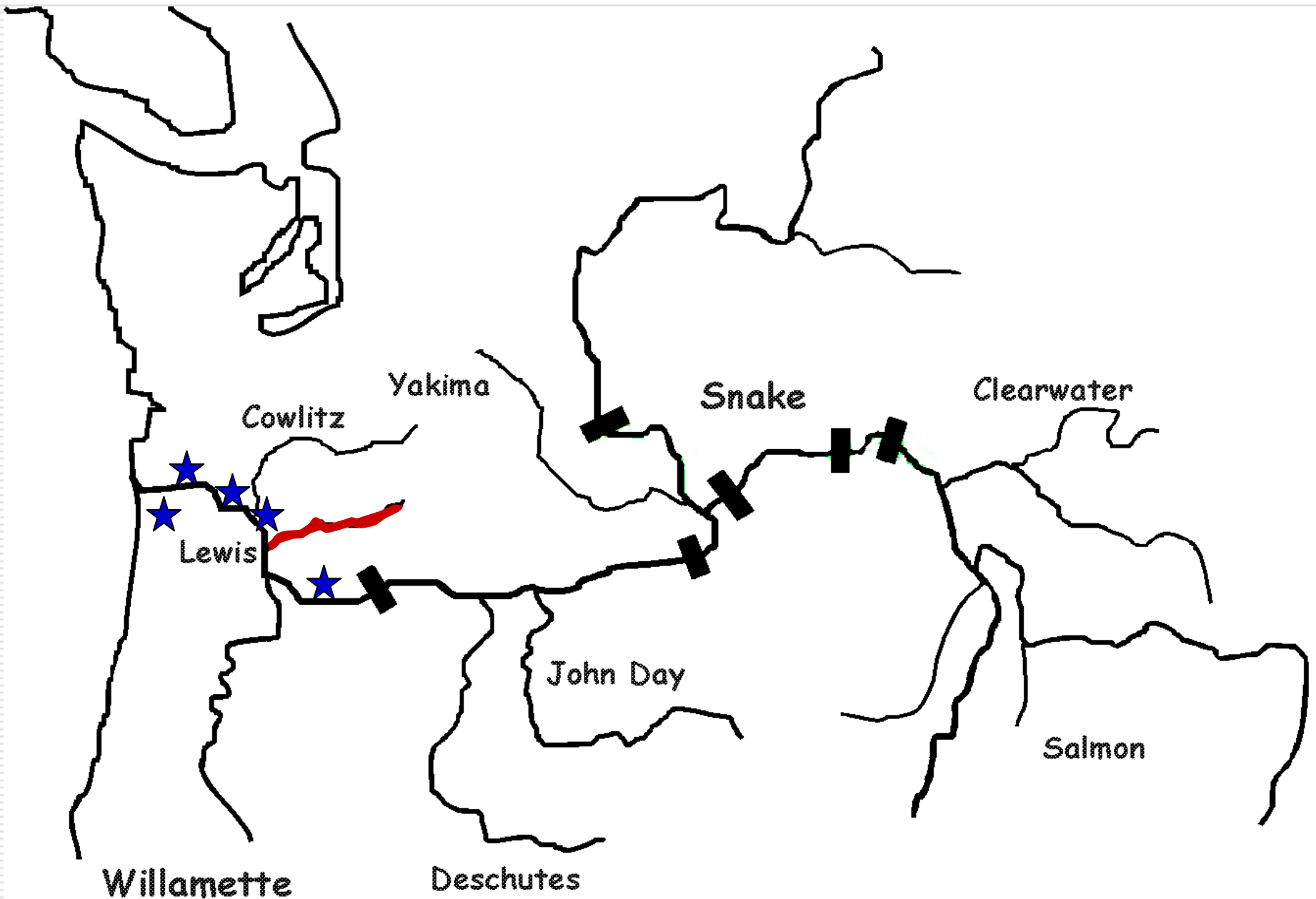


Lower River Stock Components

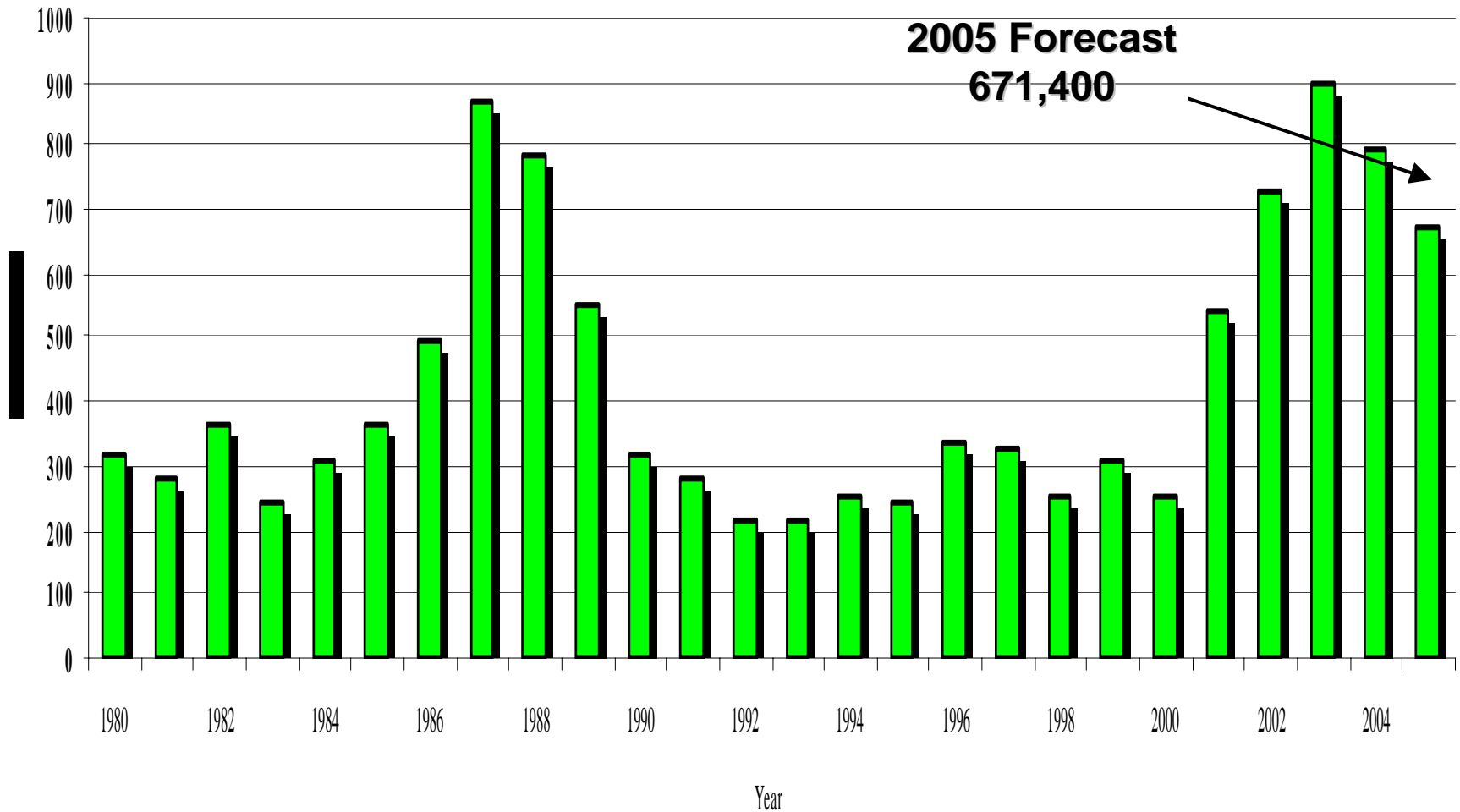
- ❑ Lower River Hatchery (LRH) – primarily produced from hatchery facilities.
- ❑ Lower River Wild (LRW) – naturally produced primarily in the Lewis River system.



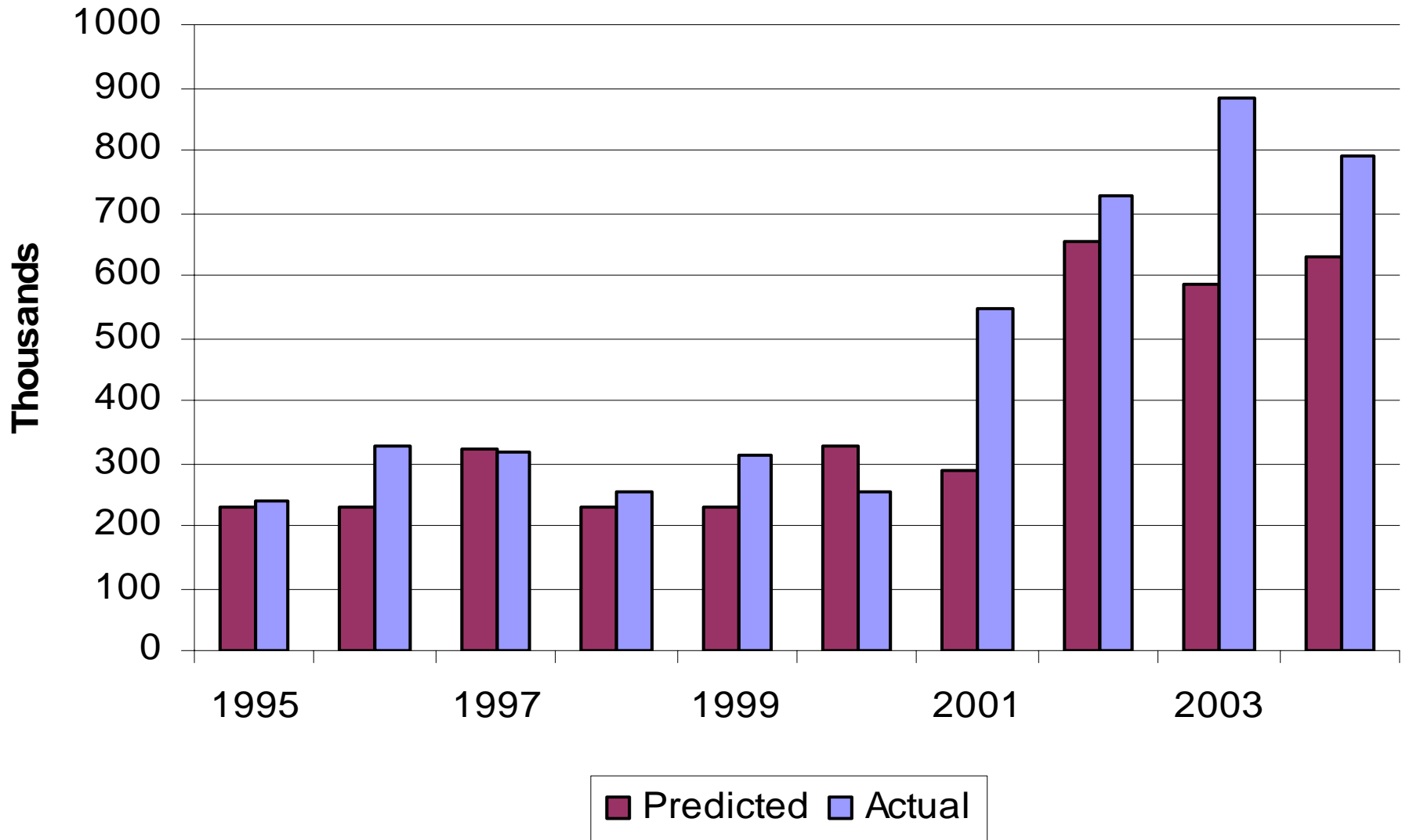
LRH & LRW Distribution



Columbia River Fall Chinook All Stocks



Total Fall Chinook Predicted vs Actual



2005 Fall Fisheries

Recreational

- ❑ Fisheries open August 1.
- ❑ Buoy 10 – 1 chinook limit. Peak time = mid to late August.
- ❑ Mainstem below Bonneville Dam – 1 chinook limit. Peak time = late August/early September.
- ❑ Mainstem above Bonneville Dam – 2 chinook limit. Peak time = first half Sept.



2005 Fall Fisheries Commercial

- ❑ Early fall fisheries
 - ❑ Early August focused in lower river.
 - ❑ Late August focused in upper river.
 - ❑ About 7-10 days in August.
- ❑ Late fall fisheries
 - ❑ Begin mid-September – coho and Chinook.
 - ❑ Limited October fishing – late coho.



2005 Fall Fisheries

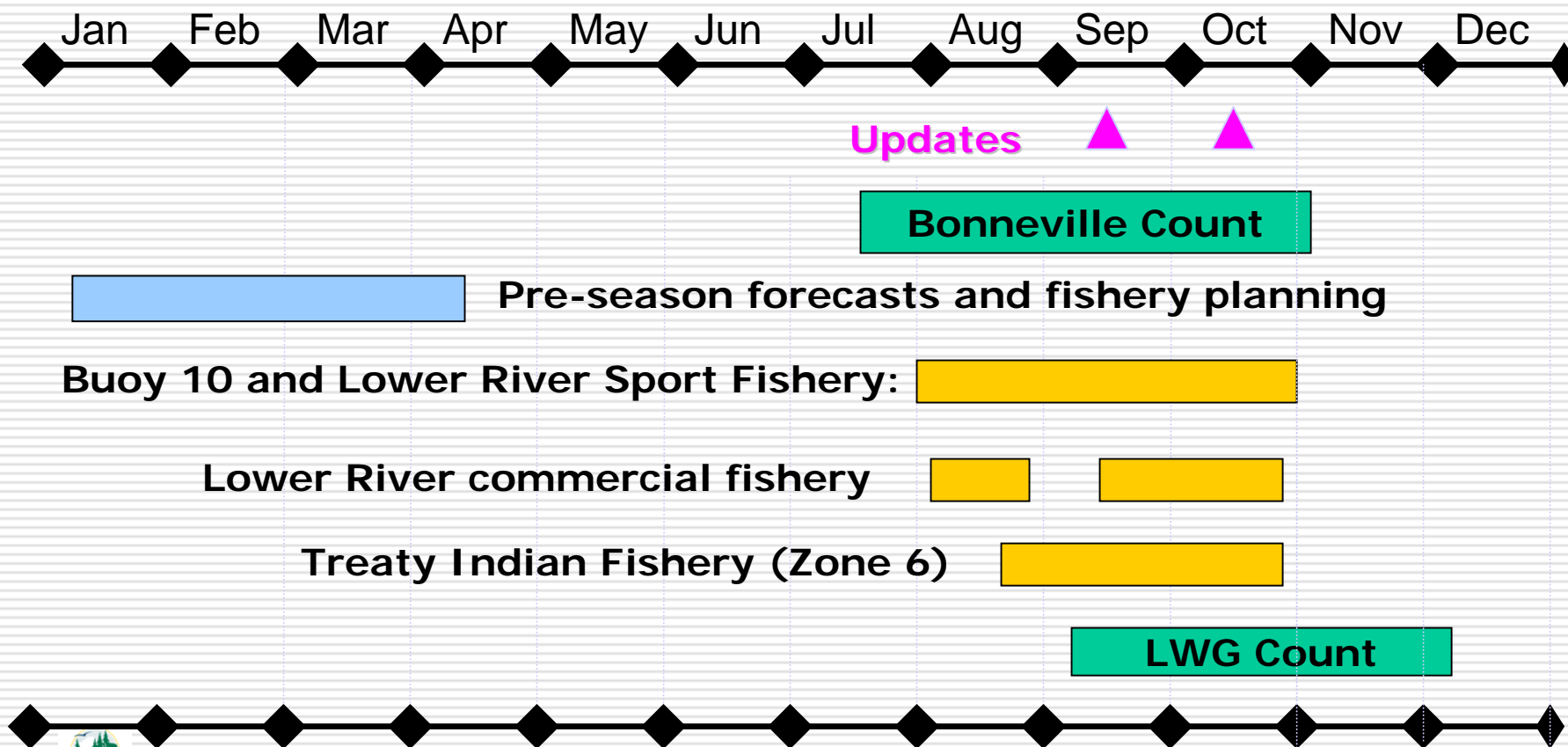
Treaty Indian

- ❑ Likely to begin end of August.
- ❑ Will have weekly periods through September.
- ❑ May fish into October.
- ❑ Chinook target species. Significant steelhead catch will occur.



August Update

2005 forecast: 671,400 Chinook (354,600 URB's)



Summer Season Wrap-up: Summer Chinook

❑ Run Size

- ❑ Preseason - 62,400
- ❑ In-season – 60,200

❑ Priest Rapids Dam

- ❑ Escapement goal 29,000
- ❑ 2005 escapement 58,700+

❑ Fisheries

- ❑ LCR recreational – 2,100 harvest
- ❑ Commercial – 2,800 harvest
- ❑ Treaty – 7,600 harvest



Summer Season Wrap-up: Sockeye

- ❑ Run Size
 - ❑ Preseason – 70,800
 - ❑ In-season – about 76,000
- ❑ Escapement
 - ❑ Priest Rapids Dam – 74,200
 - ❑ Goal – 65,000
- ❑ Fisheries
 - ❑ LCR recreational – minor
 - ❑ Commercial – none
 - ❑ Treaty – 2,800 harvest

