



We envision a Methow Valley where the natural beauty and the ecological integrity of the surroundings are balanced with a diverse and economically vibrant community.

Founded in 1996, the Methow Conservancy is an independent, community-based, nonprofit land trust.

The mission of the Methow Conservancy is to inspire people to care for the land in the Methow Valley. We do this through three programs:

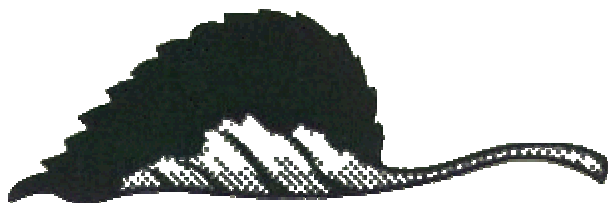
- 1) Conservation easements
- 2) Community education
- 3) Ongoing land stewardship

Easements: To date we have completed 47 conservation easements on over 4,400 acres and 10.8 miles of shoreline in the Methow Valley. A conservation easement is a voluntary, legal agreement between a landowner and a conservation organization, written to permanently protect specific conservation values (wildlife habitat, riparian lands and forests, ridgelines and agricultural land).

Education: Our educational projects include: writing and publishing the *Good Neighbor Handbook*--a 33-page booklet for new landowners; the First Tuesday Lecture Series--monthly natural history presentations; the Methow Conservation Course--a 12-week conservation seminar and a lively electronic newsletter and website.

Stewardship: The Methow Conservancy provides stewardship plans and maps for properties throughout the Valley, including plant community descriptions, forest management plans, grazing guidelines and weed control plans.

The Methow Conservancy is led by 4 FTE staff, a 14-member board of directors, and an 18-member Advisory Council. Over 800 individual members provide 60% of the annual operating budget. Grants and program income cover the remaining 40% of the operating budget (\$380,000). To date we have raised over \$4.5 million for conservation easement acquisitions in the Methow Valley.





Hancock Springs Conservation Easement Summary

Easement Size: 122 acres

Easement Location: Seven miles northwest of Winthrop, WA. The easement property includes both sides of the Methow River and 1 ¾ miles of shoreline.

Conservation Values: High-quality riparian habitat including 40-50 salmon redds and the mouth of Hancock Creek. Tribes and agencies are working to establish off-channel rearing habitat for coho at the mouth of Hancock Creek, which includes significant wetlands and is within the conservation easement. The easement protects a small acreage of upland pine/fir forest as a buffer to the riparian habitat conservation zone, and also protects the scenic open space visible from Wolf Creek Road.

Residential Use: Limited to one three-acre homesite on the upland meadow portion of the easement property (appraiser concluded that 5 homesites could be developed for 'highest and best use').

Agricultural Use: Limited to residential homesite zone and historical agricultural zone (outside riparian zone).

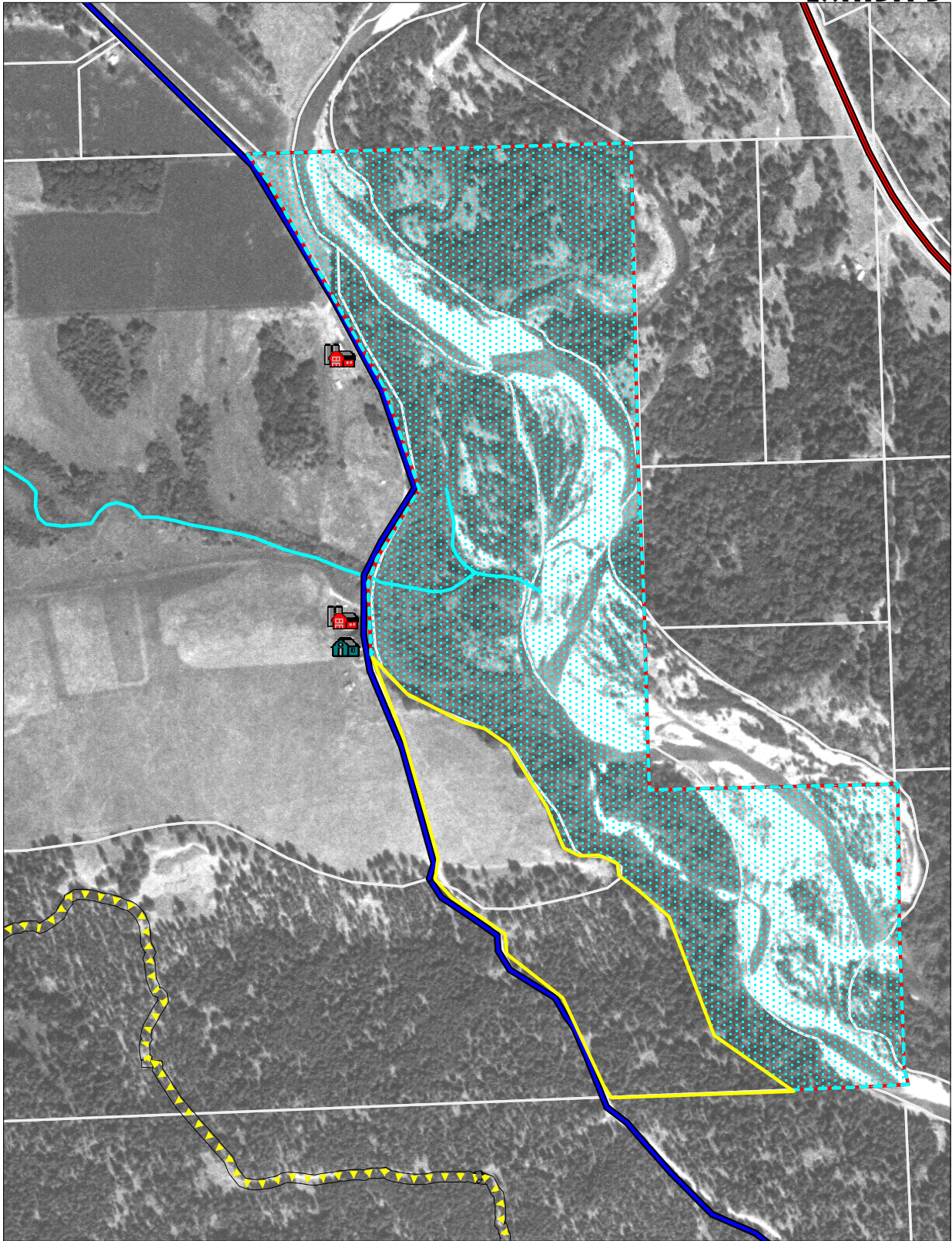
Timber Use: Per approved timber management/forest stewardship plan

Subdivision: Prohibited

Other Factors/Comments: The easement will cover 122 acres of an existing 425 acre ownership; the riparian habitat conservation zone is 98.4 acres. This acquisition will be funded by a combination of SRFB and BPA funds.

Hancock Springs Riparian Zone Photos:





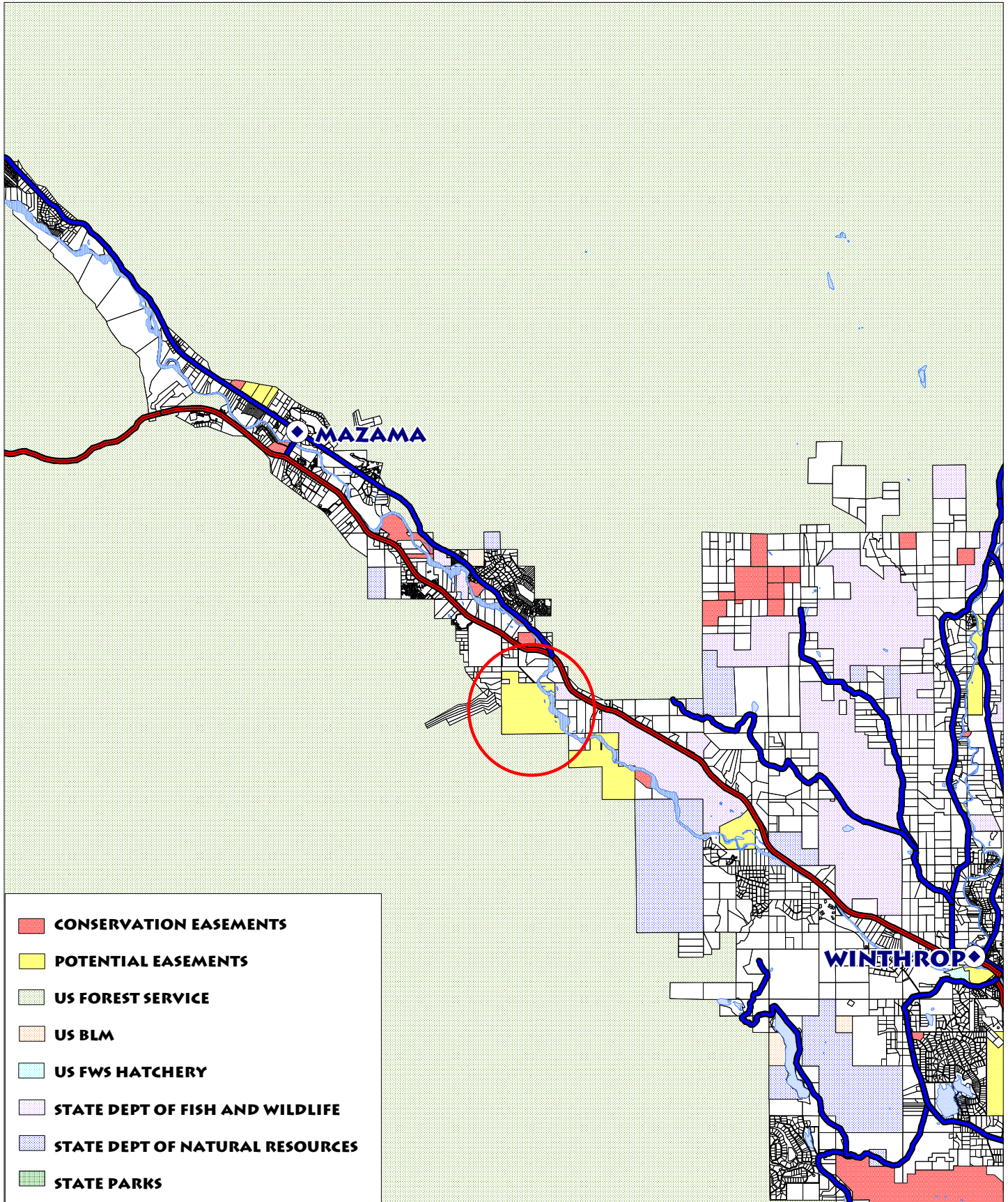
-  **UPLAND CONSERVATION ZONE= 23 AC**
-  **RIPARIAN HABITAT CONSERVATION ZONE = 98.4 AC**
-  **COMMUNITY TRAIL**

SCALE: 1 INCH = 625 FEET
3/2/05



ALLISON PROPERTY

VICINITY MAP



SCALE: 1 INCH = 2 MILES
8/16/04