

Melinda S. Eden  
Chair  
Oregon

Joan M. Dukes  
Oregon

Frank L. Cassidy Jr.  
"Larry"  
Washington

Tom Karier  
Washington



Jim Kempton  
Vice-Chair  
Idaho

Judi Danielson  
Idaho

Bruce A. Measure  
Montana

Rhonda Whiting  
Montana

September 29, 2005

## MEMORANDUM

**TO:** Council Members

**FROM:** Steve Waste, Manager for Program Analysis and Evaluation

**SUBJECT:** NOAA Briefing on Monitoring in Support of De-Listing Decisions

This briefing will be presented by Mike Crouse, NOAA Assistant Regional Administrator for Habitat, and Kim Kratz, Senior Policy Advisor for the Habitat Division. They will brief the Council on NOAA's initiative to develop an approach to monitoring that can support de-listing decisions. The objective of this effort is to enable NOAA to determine when an ESU is recovered; i.e., is no longer in danger of extinction or likely to become endangered in the foreseeable future. This assessment will be based on an evaluation of both the ESUs viability and the extent to which the threats facing the ESU have been addressed. Kim Kratz is NOAA's representative on the Steering Committee of the Pacific Northwest Monitoring Partnership and is a member of the Federal Caucus RME Team.

---

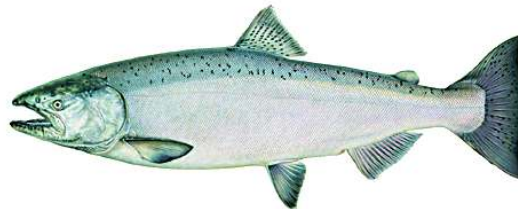
w:\sw\memo oct 5 2005 noaa.doc

# Research, Monitoring and Evaluation for Salmon Recovery Planning



**NOAA: National Marine Fisheries Service**

- **Northwest Regional Office**
- **Northwest Fisheries Science Center**



# Guidance Document:

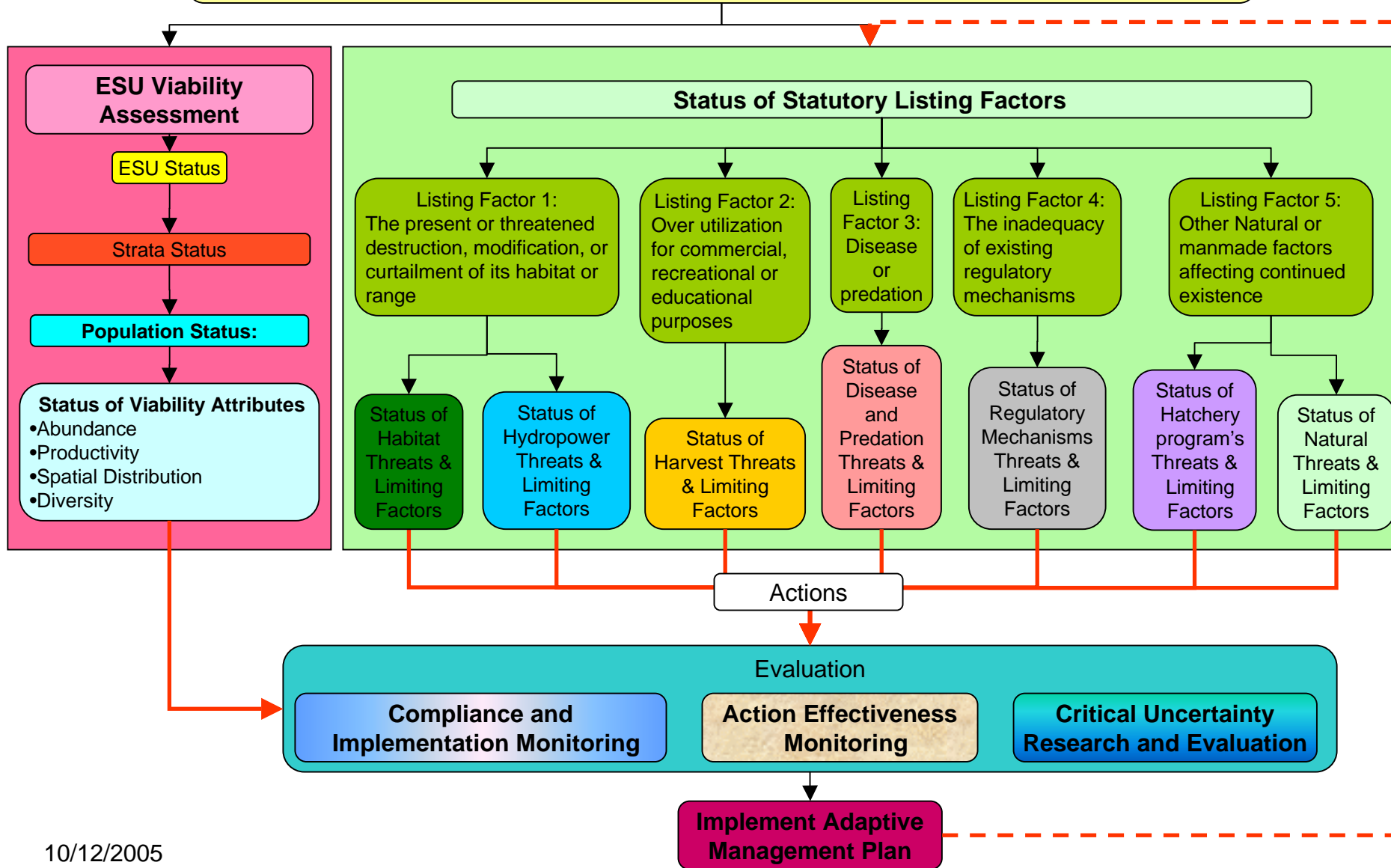
- States key management questions
- Describes information needs
- Considers prioritizing monitoring elements

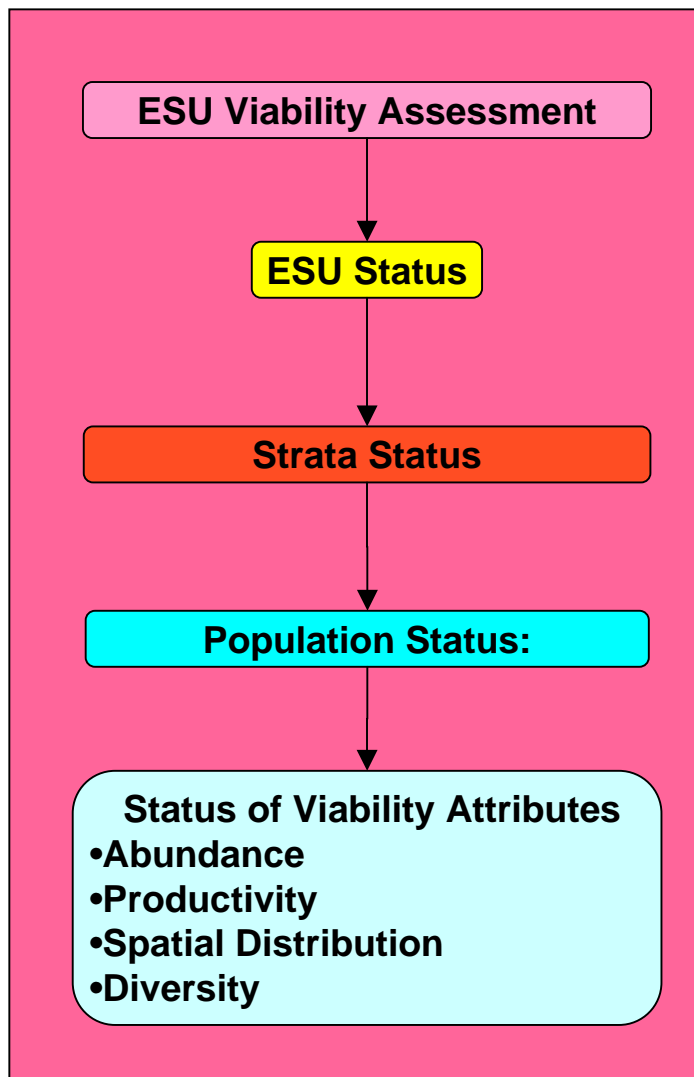
# RM&E Plan Design

- Local recovery plan focus
- Links evaluation to ESU and listing factor status
- Includes:
  - Biological Monitoring
  - Ecological Monitoring
  - Implementation & Compliance Monitoring
- Recognizes current uncertainty
  - Action Effectiveness Monitoring
  - Research
- Relies on adaptive management

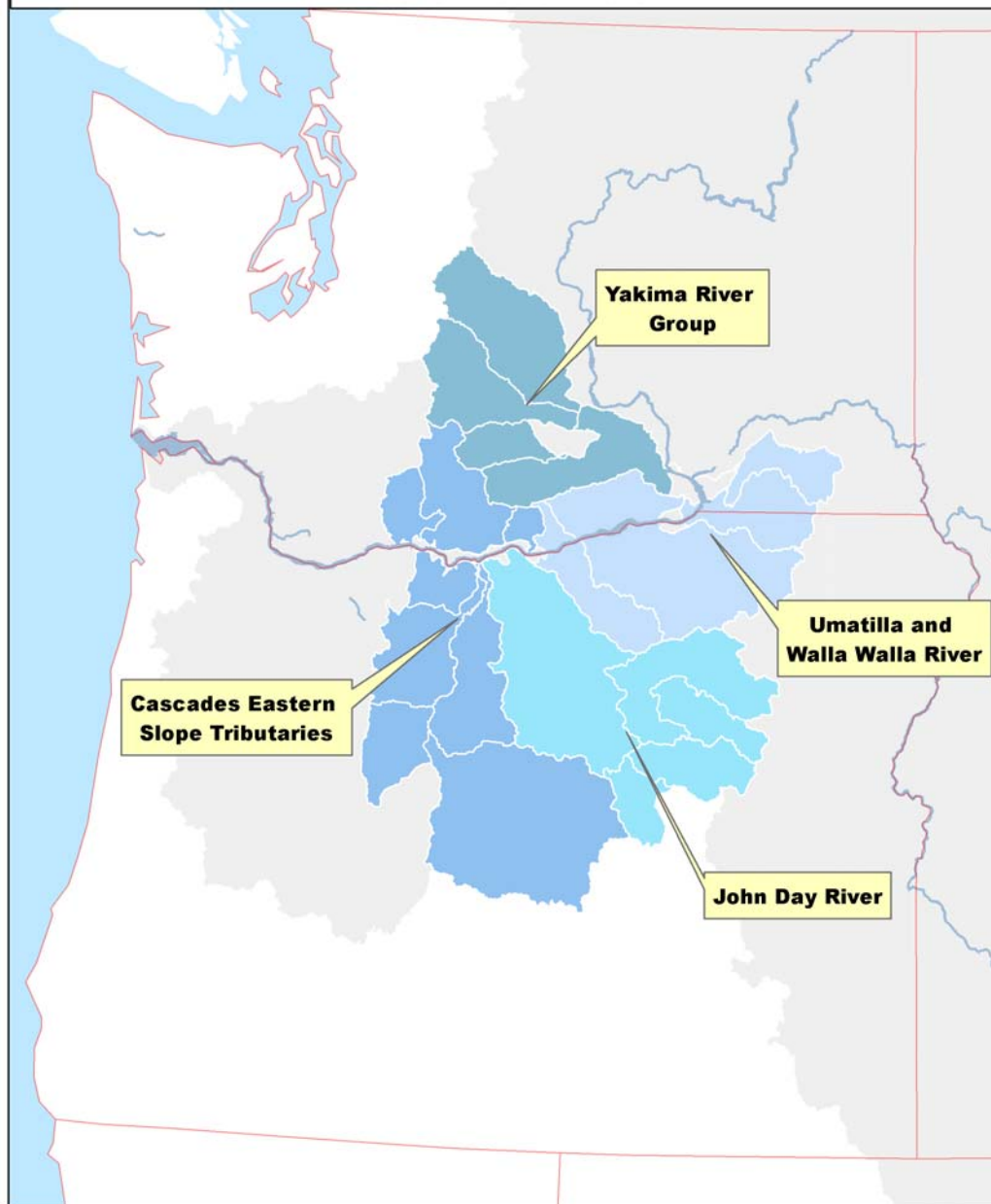
# NMFS Listing Status Decision Framework

NMFS will determine an ESU is recovered when an ESU is no longer in danger of extinction or likely to become endangered in the foreseeable future, based on an evaluation of both the ESU's status and the extent to which the threats facing the ESU have been addressed

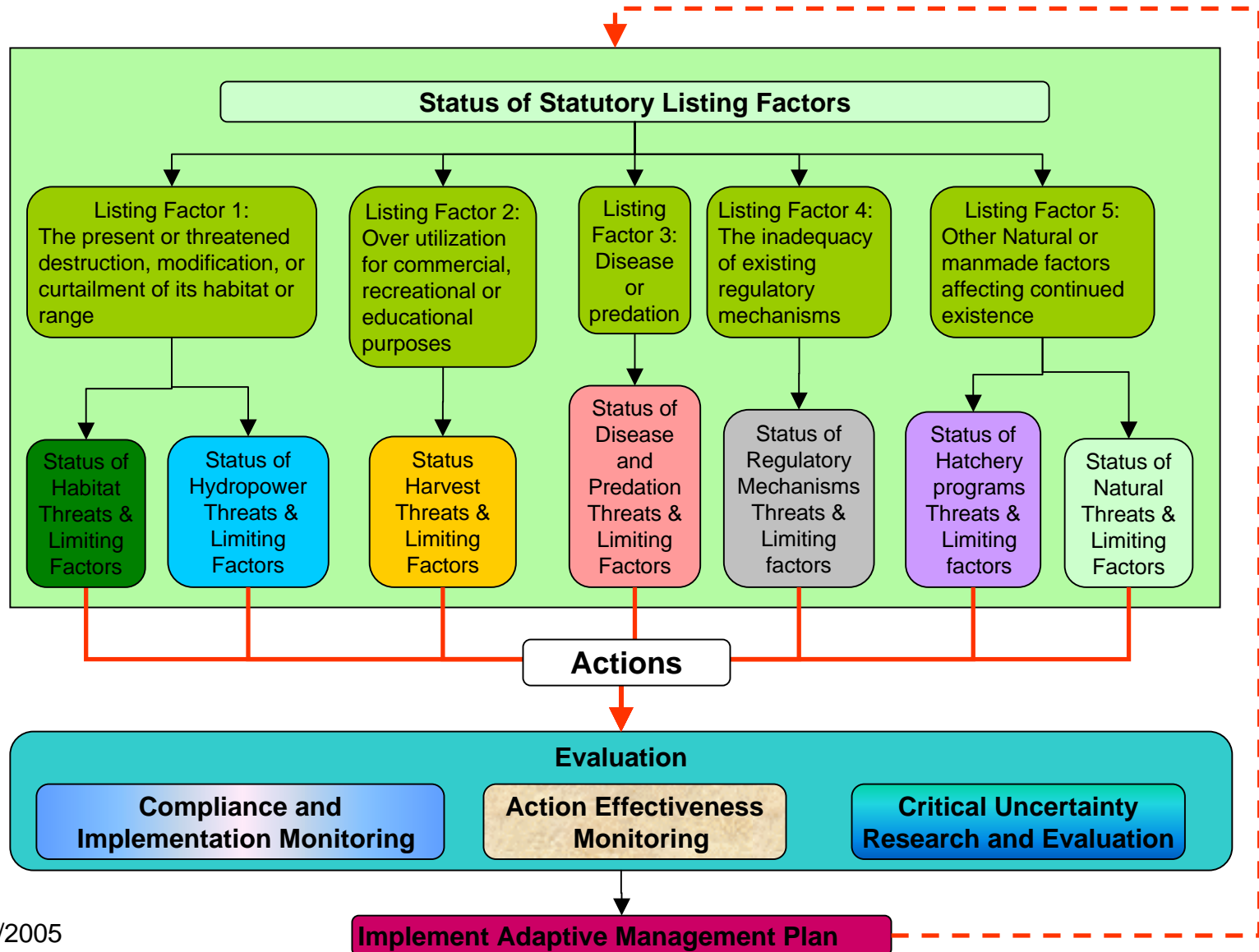




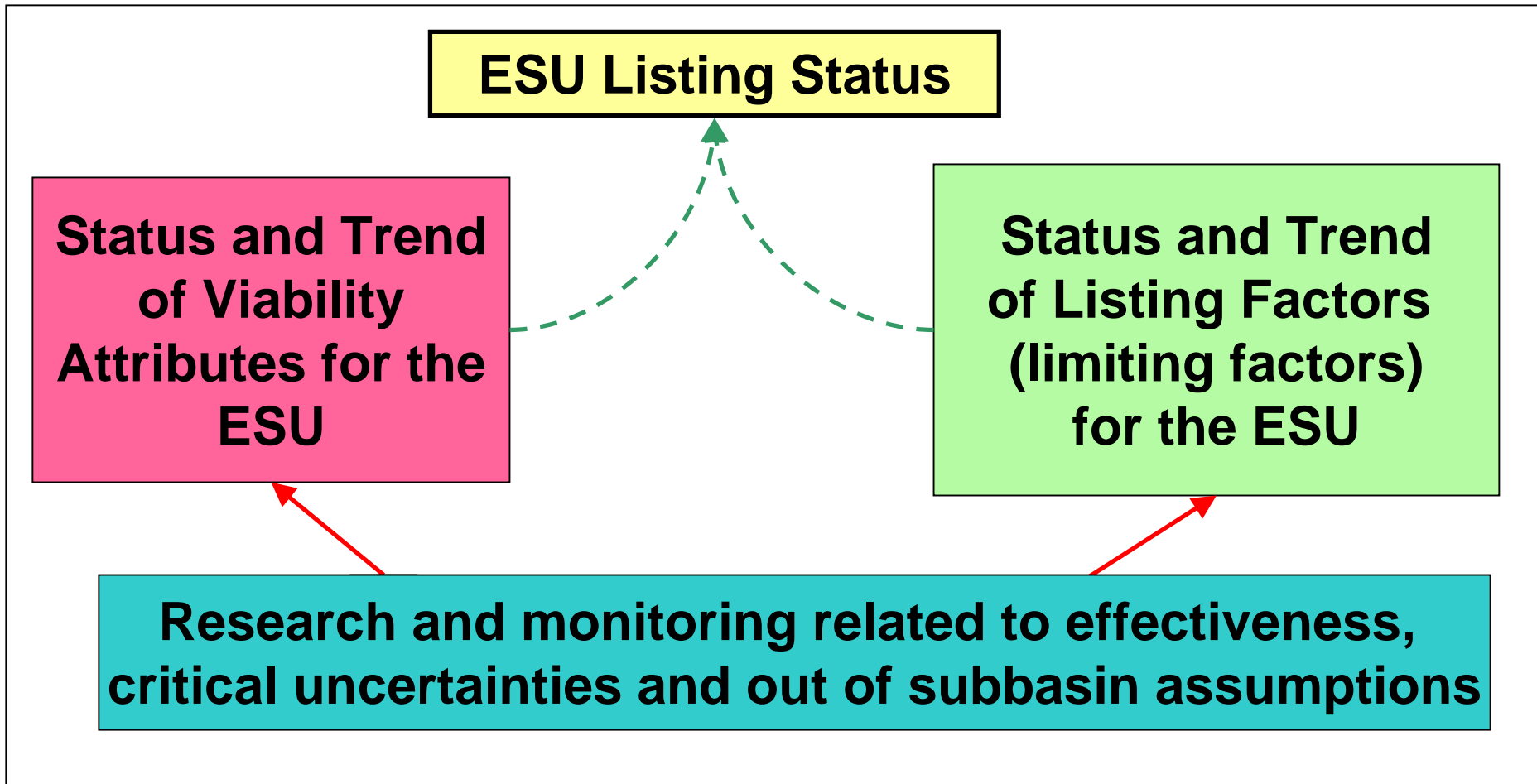
## Interior Columbia Basin Technical Recovery Team Steelhead ESU



# Monitoring and Research Associated with Statutory Listing Factors and Threats



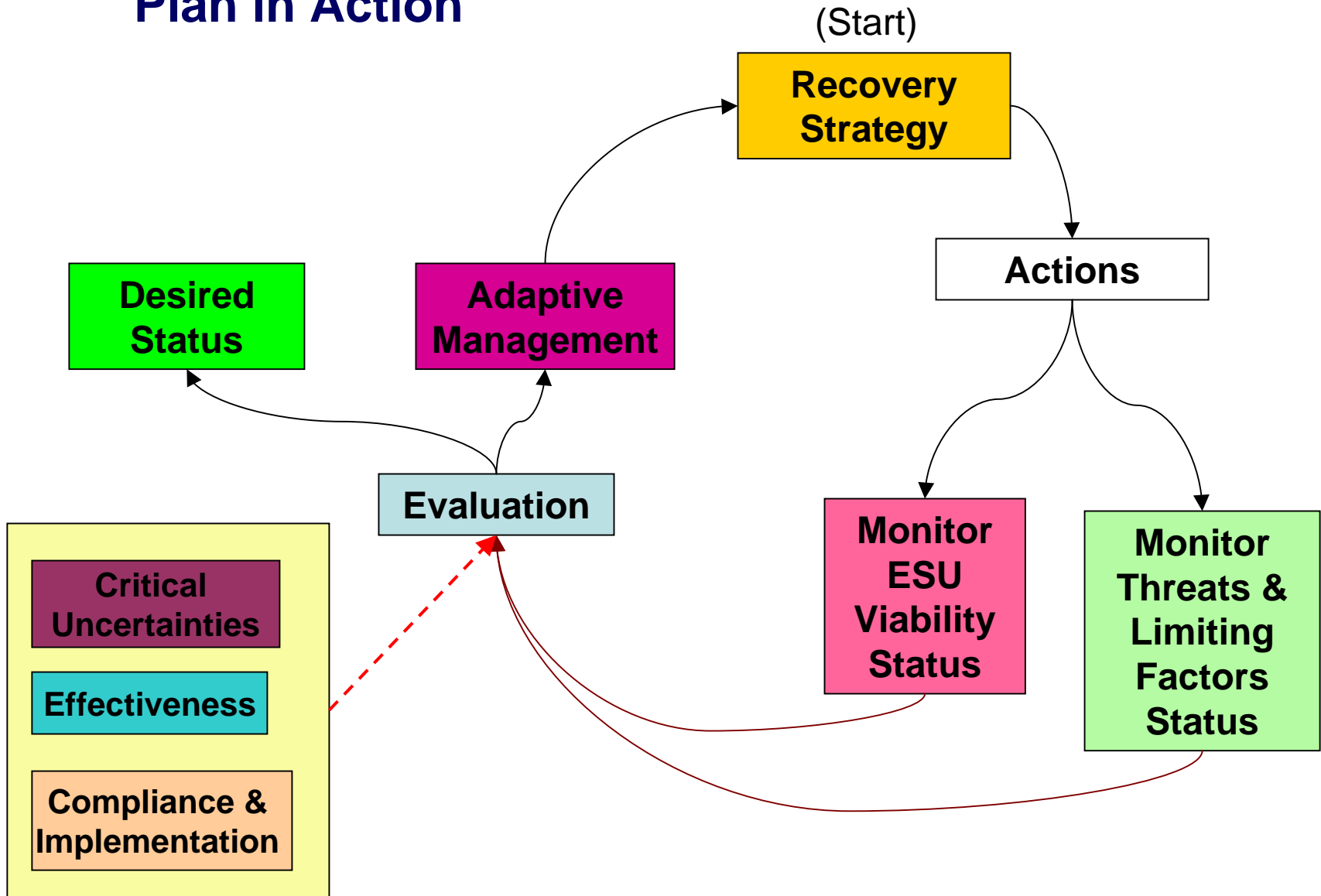
# Plan Design



\*The effort expended in each box is influenced by uncertainties and risks related to each individual ESU.



# Plan in Action



# Next Steps

- **Complete guidance document.**
- **Post on website.**
- **Work with local recovery planners to develop an appropriate ESU-specific RM&E strategy.**
  - **Types of monitoring**
  - **Distribution across ESU**
  - **Frequency/intensity of monitoring**
  - **Ex. November Shared Strategies Adaptive Management workshop**
- **Complete final guidance with FRN notice.**
- **Facilitate coordination of Federal, state, tribal and local monitoring programs that inform the listing status decision.**