



March 6, 2006

TO: Doug Marker, Fish and Wildlife Division Manager

FROM: Brian E. Lipscomb, Executive Director, CBFWA

SUBJECT: Status Project Update Time Request

Pursuant to the recent approval by the Northwest Power and Conservation Council (NPCC) of the FY 06 within year funding request, the Columbia Basin Fish and Wildlife Authority (CBFWA) is proceeding in the development of the "Status of the Resource Project." As part of this development CBFWA would like to review the attached draft of the project with the NPCC Fish and Wildlife Committee. The purpose of this discussion would be to solicit input on project content; it's development process and decisions points.

A one half hour time allocation should suffice to complete this discussion.

h:\work\StatusOfTheResource\DmarkerNPCCmemo030606.doc

STATUS OF THE RESOURCES PROJECT— DRAFT WEBSITE

Status of Fish and Wildlife in the Columbia River Basin

Focal Species

Provinces

Subbasins

Populations

Projects

Status of Fish and Wildlife in the Columbia River Basin

Focal Species

Provinces

Subbasins

Populations

Projects

Status of Fish and Wildlife in the Columbia River Basin

Focal Species

Provinces

Subbasins

Populations

Projects

Status of Fish and Wildlife in the Columbia River Basin

Focal Species

Provinces

Subbasins

Populations

Projects

Status of Fish and Wildlife in the Columbia River Basin

Bull Trout

Recovery Unit

Hood

Core Area

Hood

Local Populations

Population Data

Chapter: 6
State(s): Oregon
Recovery Unit Name: Hood River

Region 1
U.S. Fish and Wildlife Service
Portland, Oregon

DISCLAIMER
 Recovery plans delineate reasonable actions that are believed necessary to recover and protect listed species. Recovery plans are prepared by the U.S. Fish and Wildlife Service and, in this case, with the assistance of recovery unit teams, State and Tribal agencies, and others. Objectives will be attained and any necessary funds made available subject to budgetary and other constraints affecting the parties involved, as well as the need to address other priorities. Recovery plans do not necessarily represent the views nor the official positions or approval of any individuals or agencies involved in plan formulation, other than the U.S. Fish and Wildlife Service. Recovery plans represent the official position of the U.S. Fish and Wildlife Service only after they have been signed by the Director or Regional Director as approved. Approved recovery plans are subject to modification as dictated by new findings, changes in species status, and the completion of recovery tasks.

Literature Citation: U.S. Fish and Wildlife Service. 2002. Chapter 6, Hood River Recovery Unit, Oregon. 66 p. In: U.S. Fish and Wildlife Service. Bull Trout (*Salvelinus confluentus*) Draft Recovery Plan. Portland, Oregon.

Recovery Units

Historic Distribution

Current Distribution

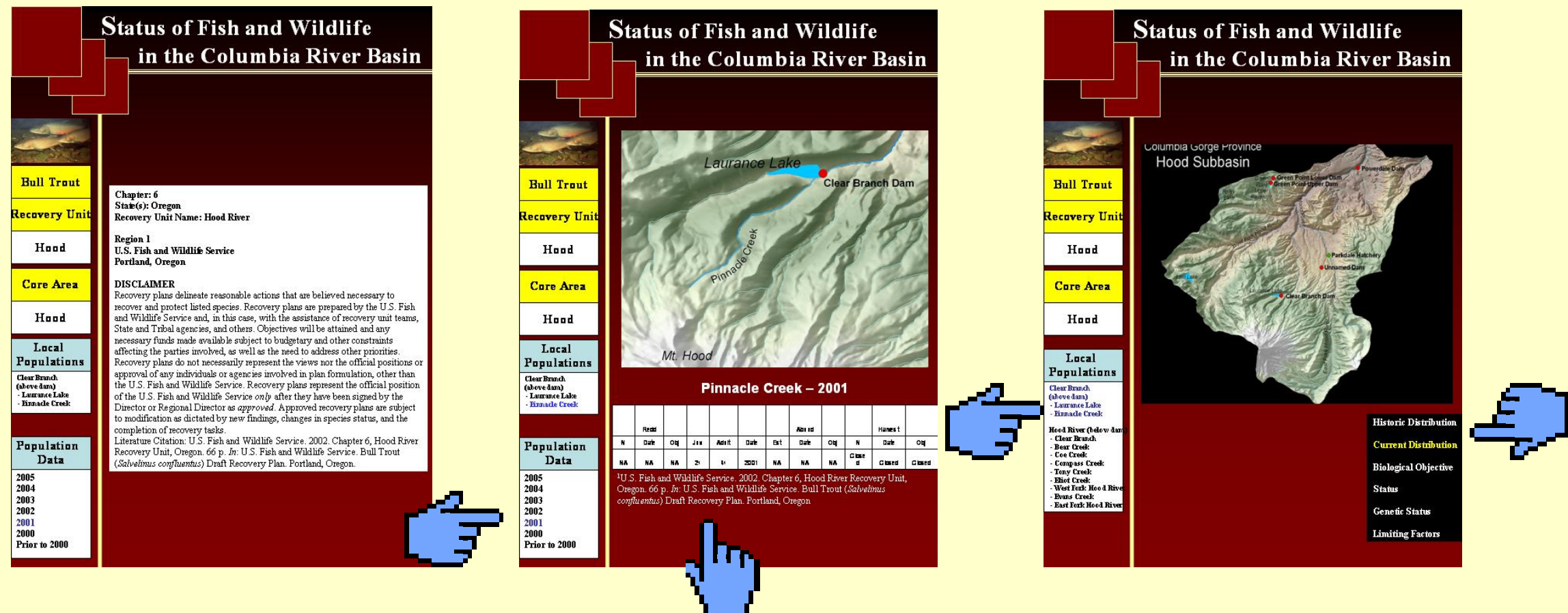
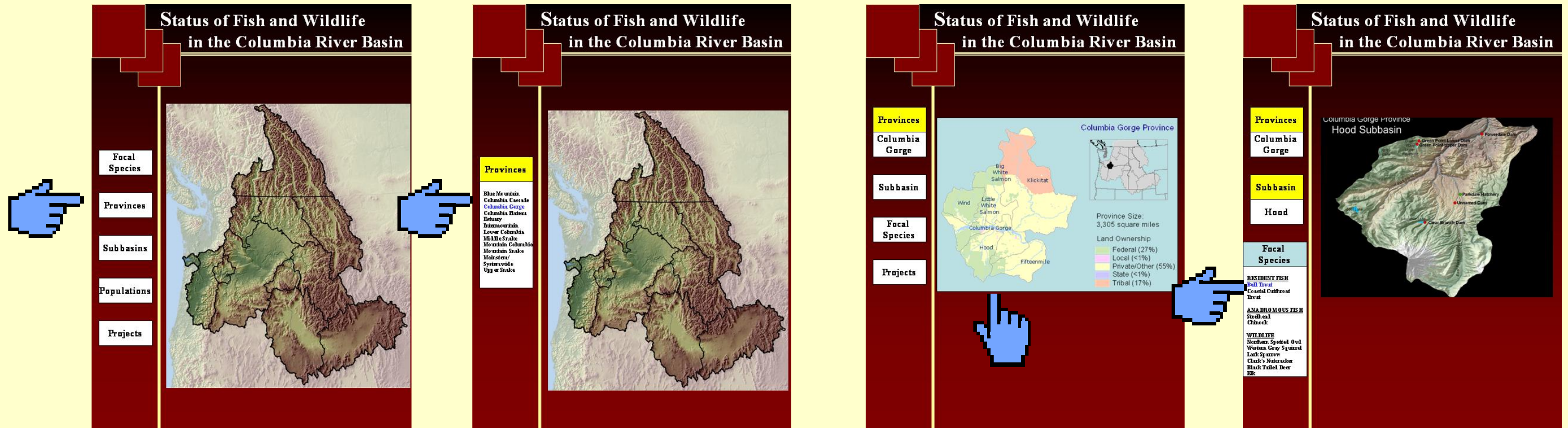
Biological Objective

Status

Genetic Status

Limiting Factors

STATUS OF THE RESOURCES PROJECT— DRAFT WEBSITE



Status of Fish and Wildlife Resources in the Columbia River Basin
Annual Report
2006

The completion of subbasin plans and subsequent adoption of biological objectives for focal species in the respective subbasins has created a need to develop an approach that will allow the region to comprehensively monitor the status of fish and wildlife populations and their respective habitats in the Columbia River Basin. Currently, there is neither a website nor annual report that comprehensively reports the status of focal species populations and their habitats relative to the biological objectives that were approved during subbasin planning. Although there are websites and reports that provide focal-species and region-specific data, these efforts are not comprehensive and comparisons between population status data and biological objectives from subbasin plans, federal recovery plans, and other management plans are not presented. Consequently, a need exists for a centralized location that interested parties can access the focal species data (current and historic) as it relates to the aforementioned biological objectives.

Since 1987, the Columbia Basin Fish and Wildlife Authority staff has developed professional relationships with the fish and wild managers responsible for managing the focal species. As a result, the CBFWA staff is uniquely qualified to work directly with the appropriate managers to collect and report current data, in a manner that will assist the Northwest Power and Conservation Council and Bonneville Power Administration and others in monitoring the progress of fish and wildlife populations relative to subbasin planning objectives.

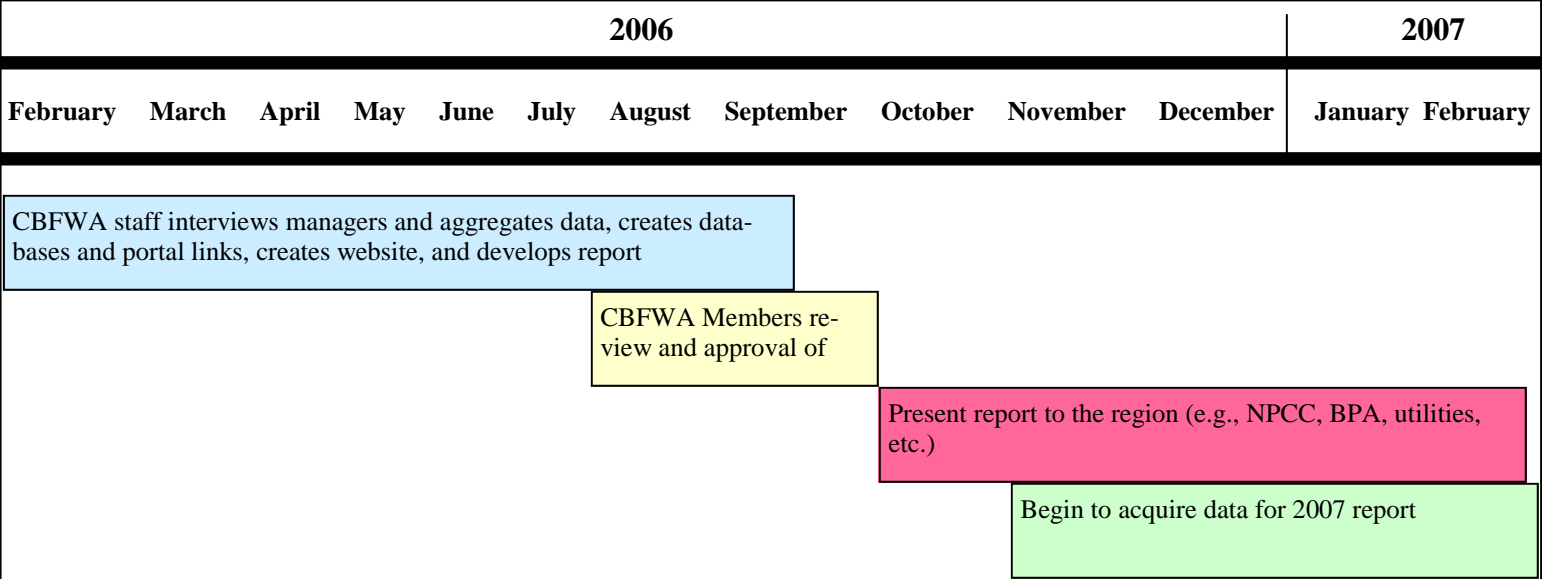
In 2005, the Columbia Basin Fish and Wildlife Authority initiated efforts to develop and maintain a webpage and complete an annual report that illustrates the status and trends of fish and wildlife populations and their habitats relative to biological objectives in subbasin plans. The 2006 Annual Report to the Bonneville Power Administration and the existing webpage provide the Columbia River Basin with the first comprehensive account of the status of anadromous fish, resident fish, and wildlife populations and their associated habitats in the context of existing biological objectives. Information presented in this report as well as links to data sources is available through the interactive webpage for the Columbia Basin Fish and Wildlife Authority’s *Status of Fish and Wildlife Resources in the Columbia River Basin* project.



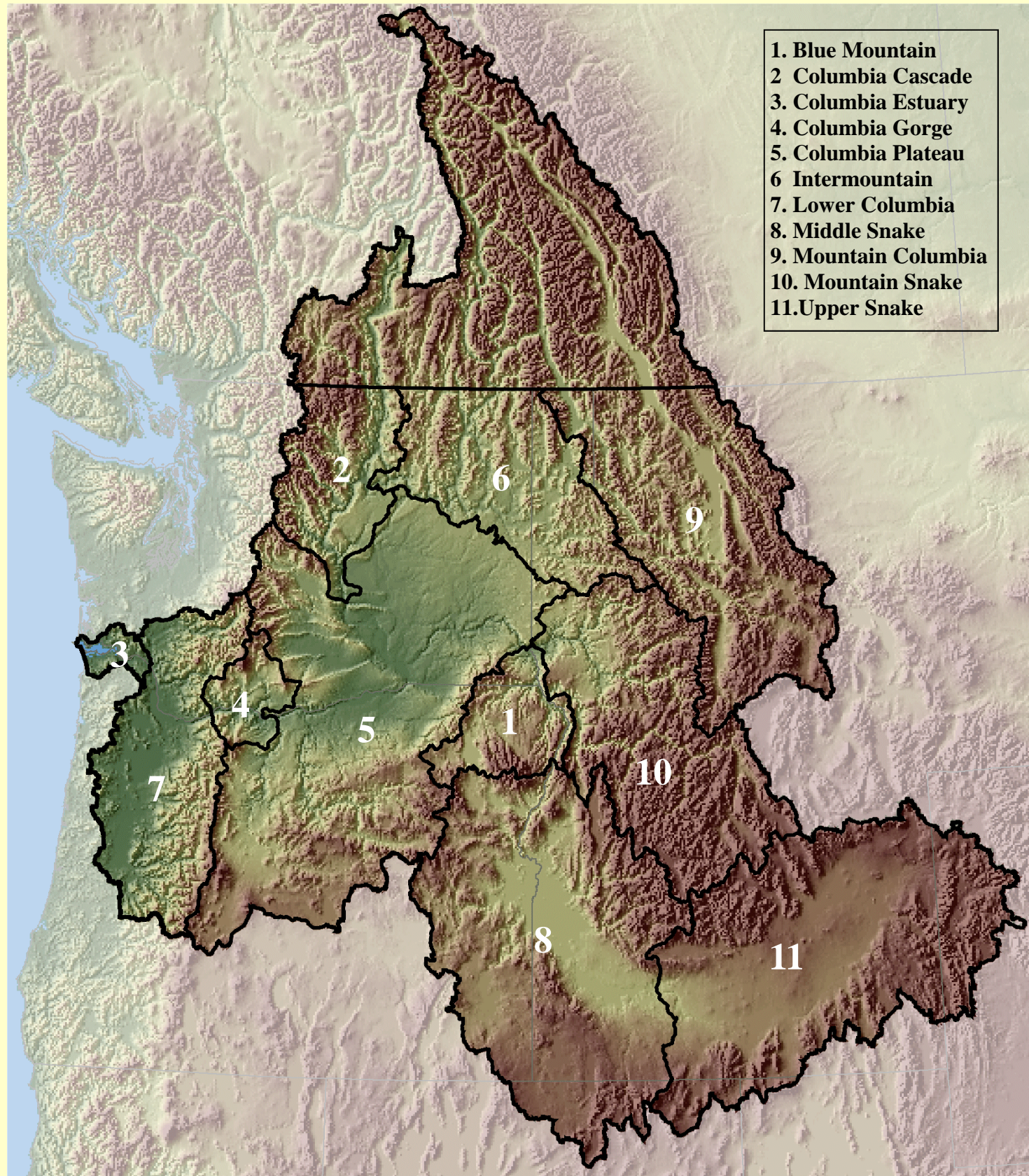
Status of Fish and Wildlife Resources in the Columbia River Basin

2006

Project Timeline and Deliverables



Columbia River Basin Provinces



Intermountain Province

- Coeur d'Alene Subbasin
- Columbia Upper Subbasin
- Pend Oreille Subbasin
- Sanpoil Subbasin
- Spokane Subbasin

Lower Columbia

- Columbia Lower Subbasin
- Cowlitz Subbasin
- Lewis Subbasin
- Sandy Subbasin
- Washougal Subbasin
- Willamette Subbasin

Middle Snake

- Boise Subbasin
- Bruneau Subbasin
- Burnt Subbasin
- Malheur Subbasin
- Owyhee Subbasin
- Powder Subbasin
- Snake Upper Middle Subbasin
- Weiser Subbasin

Mountain Columbia

- Bitterroot Subbasin
- Blackfoot Subbasin
- Clark Fork Subbasin
- Flathead Subbasin
- Kootenai Subbasin

Mountain Snake

- Clearwater Subbasin
- Salmon Subbasin

Upper Snake

- Snake Headwaters Subbasin
- Snake Upper Subbasin
- Snake Upper Closed Basin Subbasin

Chapter 3: Conclusions and Recommendations

Table of Contents

Executive Summary

Chapter 1: Introduction

- Columbia River Basin Overview
- Anadromous Fish
- Resident Fish
- Wildlife
- Report Organization

Chapter 2: Status and Limiting Factors of Focal Species Populations and Habitat Units

Blue Mountain Province

- Asotin Subbasin
- Grande Ronde Subbasin
- Imnaha Subbasin
- Snake Hells Canyon

Columbia Cascade Province

- Columbia Upper Middle Subbasin
- Entiat Subbasin
- Lake Chelan Subbasin
- Methow Subbasin
- Okanogan Subbasin
- Wenatchee Subbasin

Columbia Estuary Province

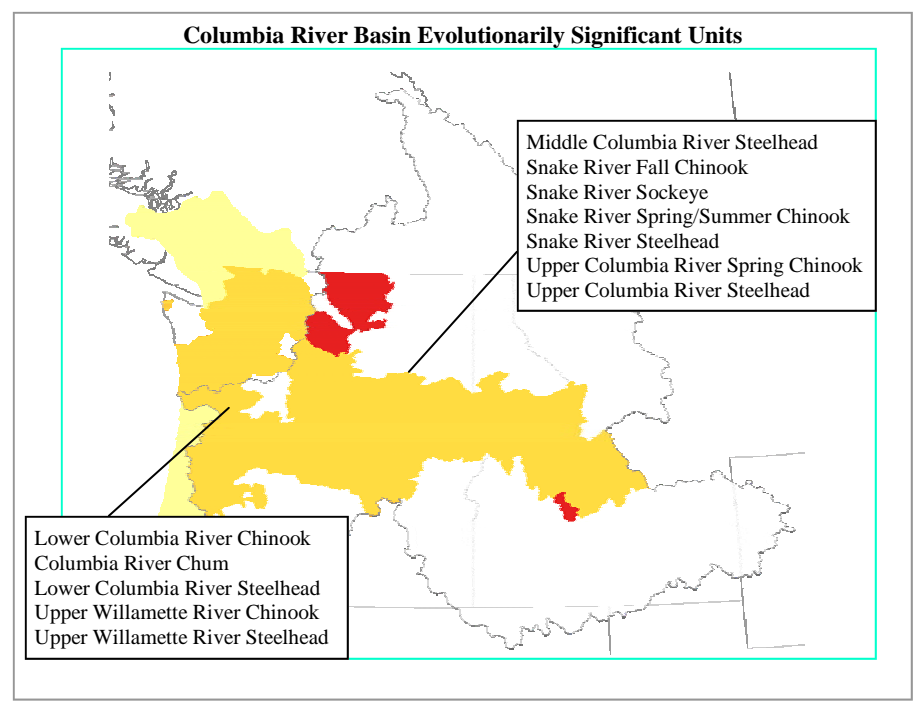
- Columbia Estuary Subbasin
- Elochoman Subbasin
- Grays Subbasin

Columbia Gorge Province

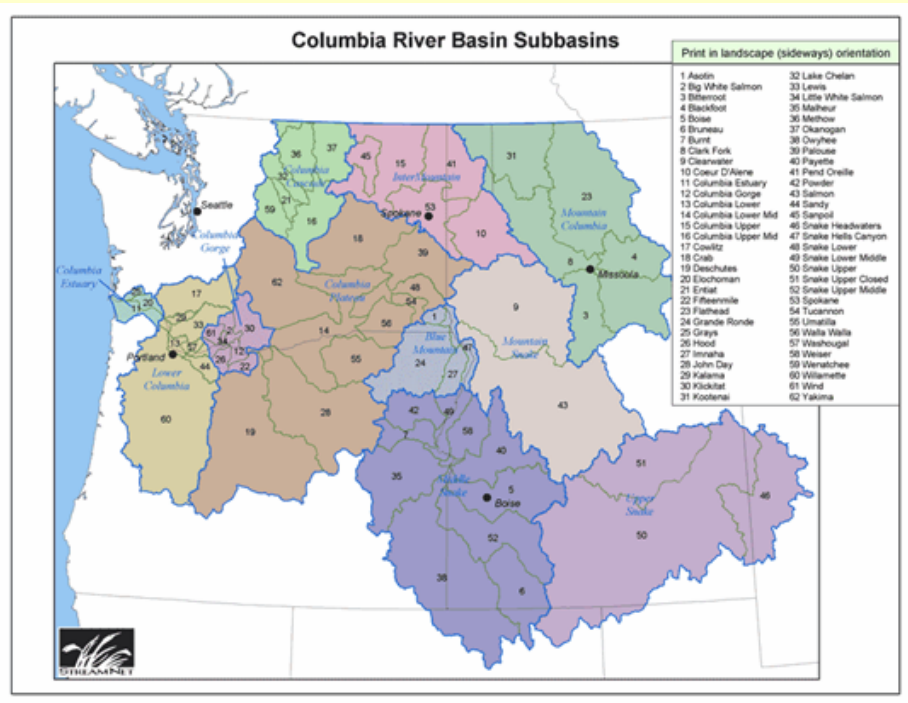
- Big White salmon Subbasin
- Columbia Gorge Subbasin
- Fifteenmile Subbasin
- Hood Subbasin
- Klickitat Subbasin
- Little White Subbasin
- Wind Subbasin

Columbia Plateau Province

- Columbia Lower Middle Subabsin
- Crab Subbasin
- Deschutes Subbasin
- John Day Subbaisn
- Tucannon Subbasin
- Snake Lower Subbasin
- Umatilla Subbasin
- Walla Walla Subbasin
- Yakima Subbasin

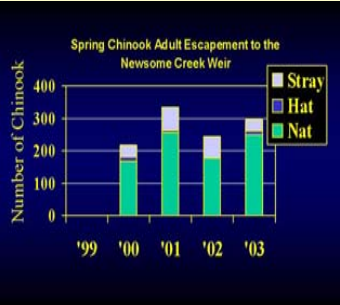


Bull Trout Core Areas

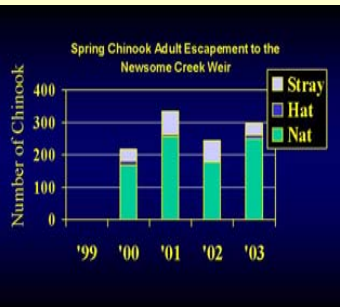




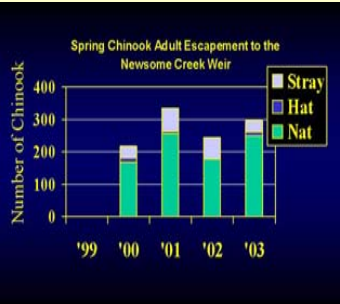
Bull Trout



Coastal Cutthroat Trout



Pacific Lamprey



Federal Designation: Threatened
Core Population: Hood
Current Distribution:
Biological Objective: ≥ 500 adults¹
Status: Not achieved, 300 adults¹

Resident

State Designation: Vulnerable Sensitive
Population: Hood River
Current Distribution:
Biological Objective:
Status:

Sea-Run

State Designation: Critical Sensitive
Population: Hood River
Current Distribution:
Biological Objective:
Status:



Summer

Federal Designation: Threatened
ESU:
Current Distribution:
Biological Objective:
Status:

Winter

Federal Designation: Threatened
ESU:
Current Distribution:
Biological Objective:
Status:

Spring

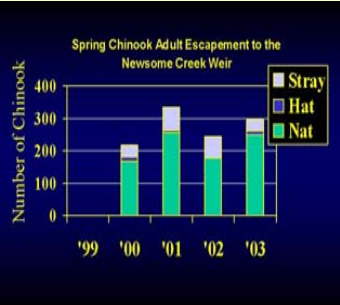
Federal Designation: Threatened
ESU:
Current Distribution:
Biological Objective:
Status:

Fall

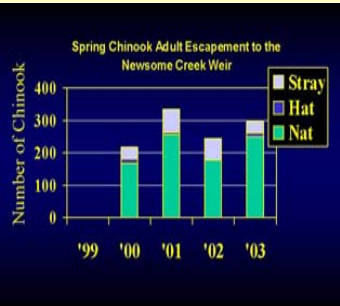
Federal Designation: Threatened
ESU:
Current Distribution:
Biological Objective:
Status:



Steelhead



Chinook



Limiting Factors

Water Quality— Exceed standards for temperatures, pH, chemicals, and dissolved gas due to dams, and past and current forestry/ agriculture practices
Isolation/Migration Impediments— Loss of gene flow and access to rearing habitat. Clear Branch Dam fish trap is not effective for passing fish.
Entrainment—Downstream entrainment at Clear Branch and Powerdale dams
Flows-Altered and reduced flows due to dam operations and diversion structures have reduced flows
Lack of In-stream Cover—Lack of large wood due to past forestry practices

2001-2005 Funding Levels and Efforts in the Hood Subbasin

