

Tom Karier  
Chair  
Washington

Frank L. Cassidy Jr.  
"Larry"  
Washington

Jim Kempton  
Idaho

Judi Danielson  
Idaho



Joan M. Dukes  
Vice-Chair  
Oregon

Melinda S. Eden  
Oregon

Bruce A. Measure  
Montana

Rhonda Whiting  
Montana

March 30, 2006

## MEMORANDUM

**TO:** Fish and Wildlife Committee

**FROM:** Patty O'Toole, Program Implementation Manager

**SUBJECT:** Discussion of the FY 2007-2009 project selection process

At the April Fish and Wildlife Committee meeting staff will continue it's monthly discussion with the Committee regarding the FY 2007-2009 Project Selection Process.

### Rolling issue memo

#### *"Old" programmatic issues*

Attached to this cover memo is the current draft of the rolling issue memo (version 3). We will review issues 4) Transition to an integrated regional monitoring and evaluation framework and 5) Assumptions for use of Bonneville's capital borrowing authority to finance certain recommended proposals. Staff does not propose any changes to the staff recommendations. We seek a recommendation from the Committee on these two issues.

#### *"New" programmatic issues*

Staff will also introduce two *new* issues to the Committee in the April version of the rolling issue memo. These are issues 6) Funding the operating and maintenance costs of a maturing program and 7) Timing and design of the Project Selection Process to select FY 2010 and beyond projects.

Following the issue memo are two documents. First is the latest approximate schedule for issue discussion. The second is a letter from Bonneville discussing concerns related to the transition of ongoing projects from the current project selection cycle to the new set of project selection recommendations in October. Bonneville proposes some guidelines for the transition. We will have an opportunity to discuss these at the April meeting.

---

w:\po\ww\07 - 09 march discussion april committee.doc

Tom Karier  
Chair  
Washington

Frank L. Cassidy Jr.  
"Larry"  
Washington

Jim Kempton  
Idaho

Judi Danielson  
Idaho



Joan M. Dukes  
Vice-Chair  
Oregon

Melinda S. Eden  
Oregon

Bruce A. Measure  
Montana

Rhonda Whiting  
Montana

March 30, 2006

## MEMORANDUM

**TO:** Council Members

**FROM:** Staff

**SUBJECT:** Fiscal Year 2007 through 2009 Fish and Wildlife Project Review and Recommendations -- **"Rolling Issue Memo" Version 3**

### Background

The Northwest Power Act directs the Council to make recommendations to Bonneville for funding fish and wildlife projects. The Council has approved a project review and selection process that will yield funding recommendations for project funding for Fiscal Years 2007 through 2009 in October this year.

As the Council leads the region through this process, numerous issues will develop that require public notice, consideration, and resolution. This document is the first iteration of the "rolling issue memo" that will be used to identify and provide public notice of issues that bear upon the Council's funding recommendations. The memo is "rolling" because as the project selection process moves forward over time, the both the resolution currently identified issues will be "rolled" into and preserved in the document, and newly emerging issues will be "rolled" into the document and positioned for resolution. At the end of the project selection process, this rolling issue memo will become the Council's decision document that it will forward to Bonneville, including its project funding recommendations along with a record of the related issues considered throughout the process and their disposition.

All who are interested in the Council's project funding recommendation process need to appreciate the critical role that this rolling issue memo will play. This document is the vehicle to provide notice of the issues that the Council staff believes influence the Council's final project funding recommendations. Likewise, this document will include the Council staff proposals for Council treatment or resolution of those issues. When those participating or having an interest in this process share a perspective or opinion on the issues in the memo, those need to be communicated to Council staff through the Fish and Wildlife Division Director, Doug Marker so that they can be included in the memo for Council consideration and public notice.

While this rolling memo will play a critical role in issue identification, development, and resolution, it must be made clear that there is a limit to the subject matter that can be developed in this way. The Council will not establish or amend significant fish and wildlife policy in this process -- those significant policy issues, that are at or close to the core of the adopted Fish and Wildlife Program -- must be addressed in a formal Fish and Wildlife Program amendment process. For example, later in this document the distribution of the Bonneville fund among anadromous fish, wildlife, and resident fish (the “70/15/15” rule) is explained for context to help interested parties understand the province funding targets approved by the Council. It is possible that an interested party may believe that a different distribution policy would be favorable, or that this one be completely eliminated. However, because this “70/15/15” distribution policy is specifically called for in the adopted Fish and Wildlife Program, and could not be altered or eliminated by the Council in this project selection process. The most the Council could do is to explore alternative ways to achieve the “70/15/15” policy. Again, this is only an example.

In summary, this rolling memo plays a key role in focusing the Council and interested parties on important issues and Council decisions relating to project funding recommendations for Fiscal Years 2007 through 2009. Suggestions to add to the suite of issues presented herein, and comment on issues presented need to be routed through the Council staff so that they can be included in the next iteration of the issue memo. As issues become ripe for Council resolution over the next several months, the staff will make recommendations to the Council and it will make decisions. This will help keep the number of decisions made at the end of the process more manageable and focused on the actual project funding recommendations.

## **I. Schedule**

On October 21, 2005, the Council and Bonneville issued a solicitation for project proposals to implement the Columbia Basin Fish and Wildlife Program. Proposals were submitted through January 10, 2006. The proposals are being reviewed by the Council’s Independent Scientific Review Panel (ISRP report due no later than June 16<sup>th</sup>) and prioritized by provincial work groups and a basinwide work group convened by Council staff. The Council will consider the ISRP report and the recommendations received by the local groups. Some proposals will be asked to respond to issues raised by the ISRP and the report for this second review will be provided to the Council by August 31<sup>st</sup>. The Council will make funding recommendations at its October meeting.

## **II. Programmatic Issues**

*A “**programmatic issue**” transcends a single project or proposal -- it bears upon how the Council understands and implements its project review and recommendation process and/or it colors its funding recommendations broadly for all projects or a significant set of projects.*

### **1. Bonneville’s funding commitment during the 2007-2009 rate period; Council allocation targets and principles.**

Last fall Bonneville and the Council agreed that it would use an annual average planning budget of \$153 million for Fiscal Years 2007 through 2009. In addition to that “expense” funding, Bonneville will also make available \$36 million in funds borrowed from the U.S. Treasury. This

latter amount often referred to as “capital” funding, is subject to particular rules and standards prescribed by Bonneville in its “Capital Funding Policy for Fish and Wildlife Projects”.

In order to ensure the ability for all areas of the Columbia Basin to participate, planning target allocations have been established for each Province. Similarly, for research, monitoring and evaluation, and coordination activities that are not linked to a particular province, a “basinwide” planning target was established. The allocations for each Province were based on historical Council recommendations and start from the average of the Council recommendations for Fiscal Years 2004 through 2006. That is, the Council surveyed how it, along with Bonneville, fish and wildlife managers, and others have traditionally committed funding under the Program. These patterns are the legacy of management emphasis and legal and policy considerations, and are not to be considered perfect or those that will be used in future years.

The Council’s 2000 Program carries forward the goal of ensuring that Bonneville funds are committed to all three of these Program areas. The Council made adjustments to the historical recommendations based allocation to reflect the 70/15/15 distribution. The Council notes that while in recent years the resident fish distribution has come close to 15% of the program, it appears that it is the wildlife component that has lagged behind. Therefore, where both resident fish and wildlife projects occur, the Council’s intent is to have both of these program areas approach their 15% allocation goal.

Bonneville articulated a goal in its Power Function Review of committing at least 70% of its annual fish and wildlife funding to “on the ground work”, and no more than 25% to research and monitoring and evaluation activities, and 5% to coordination actions. The Council considered these goals but decided **not** to use these targets to allocate funding for Fiscal Years 2007 through 2009. Nonetheless, the Council and Bonneville will work together in this project selection process, and into the future, to focus resources on activities that provide direct benefits to fish and wildlife while maintaining an efficient accountability framework of monitoring and evaluation, research directed at key priorities, and to streamline necessary coordination.

**Preliminary Staff Recommendations:** Most of this issue and description is provided primarily as background, and no near-term Council action is required. The staff notes that it would be helpful if Bonneville can work as quickly as possible to review the proposals that were submitted and identify those that may be eligible for capital funding. This would be important information for the local groups as they work to prioritize the expense targets allocations. As the project selection process moves forward over the next several months, if there are issues that develop with regard to the province allocations they will be identified here and brought to the Committee and Council for discussion.

**Comment received:** Bonneville provided comments (3/3/06 letter) that suggest that we keep two factors in mind. That funding capital projects often commits out-year funding for operations and maintenance and that this needs to be evaluated as a priority relative to other possible uses for that funding. Also, that capital funds must be repaid with interest so that capital project actually cost more in the long run, than expense projects.

**Staff recommendations:** No change from preliminary recommendations.

**Committee Recommendation:** The Committee accepted the staff recommendations. The Committee understands that Bonneville is reviewing the proposals to determine which are eligible for capital funding, and that this review will be completed very soon. The Committee recommends to the Council that it direct staff to review Bonneville's determinations, work to reach an agreement on those designations, and if there are disagreements or other budget or funding allocation issues that emerge as this process moves forward, return those to the Committee.

## **2. Ensuring projects recommended respond to BPA/FCRPS obligations without "in lieu" funding problems.**

Bonneville has a legal obligation to protect, mitigate, and enhance fish and wildlife impacted by hydrosystem development and operation. This is Bonneville's "responsibility." To meet that duty, Bonneville has the *authority* to fund on-site protection and mitigation actions as well as offsite habitat and production actions--that offsite work now catalogued in subbasin plans.

As the Council stated in its public letter resolving broader process issues in the subbasin planning process, as long as an offsite mitigation project proposal funded by Bonneville addresses a species identified as adversely affected by the hydrosystem, that action is potentially within the authority of Bonneville to fund as part of its effort to satisfy its Power Act mitigation obligation -- in doing so, Bonneville is responding to its legal *responsibility* to protect, mitigate, and enhance fish and wildlife. The possible exceptions are those cases where Bonneville funding for a project replaces funding of another entity that is required or in place. The Act precludes Bonneville from funding this work "in lieu" of funding provided by another responsible party.

**Preliminary Staff Recommendations:** Determining which project proposals may run afoul of the Act's in lieu funding prohibition has always been done by Bonneville. It would be extremely helpful to both the Council and the local groups developing project funding prioritization recommendations if Bonneville would quickly review the proposals and provide notice to the Council of the particular proposals that may present an in lieu funding problem. The staff suggests a date of March 6<sup>th</sup> for notice of which (if any) proposals may have in lieu funding issues.

**Comment received:** Bonneville noted in their response that they would provide the results of their review of proposals for in lieu concerns in April, not in March as the previous draft of the memo suggested.

**Staff recommendations:** No immediate change in the staff recommendations. As the result of Bonneville's proposal review will be available in early April instead of March, this issue may need to be re-visited at a later date.

## **3. Integration of off-site mitigation requirements of FCRPS Biological Opinions**

In past project selection processes the Council has sought to deliver recommendations to Bonneville that satisfied its ESA-based objectives balanced with its broader Northwest Power Act obligation to protect, mitigate and enhance any fish and wildlife affected by the

hydrosystem. A consistent message from the Council has been that Bonneville needs to make its ESA-based requirements known as early in the project selection process as possible so that those could be considered as part of the overall and broader fish and wildlife project recommendation package the Council develops.

Further, the Council has consistently stated that BPA's ESA-based actions need to be held to the same level of scientific, public, and Council review as all other fish and wildlife actions funded by Bonneville, and that the best way to ensure this is to develop any specific ESA-based actions as part of the general project selection process. The Council believes that it has been very successful in delivering the ESA-based projects sought by Bonneville in its project selection and within-year funding processes (the RPAs from the 2000 BiOP primarily).

The current project selection process began with substantial uncertainty attending Bonneville's ESA-based needs. The 2000 and 2004 Biological Opinions and the Action Agency Updated Proposed Action had been declared not legally sufficient by the Federal Court. Just as the Council and Bonneville released the call for proposals to be funded by Bonneville in this next cycle, Bonneville and the other Action Agencies were ramping up their work to respond to the Court's rulings, which may include securing needed survival improvements from off-site actions. The staff understands that the Action Agencies and NOAA seek to have a draft FCRPS Biological Opinion completed around June 1, and a final in October. It is unclear to staff when in the course of that work off-site actions (habitat, hatchery, etc) if any, may be identified as part of the Agencies' proposed action or the NOAA draft Biological Opinion.

**Preliminary Staff Recommendations:** The staff recommends that the Council adhere to its consistent position that Bonneville's ESA-based off-site mitigation projects be developed, as much as possible, within the general project selection process. Again, the benefits are substantial -- scientific rigor, public notice and comment, and budget scrutiny are products of this process. Moreover, once a project proposal is selected in this process, it will have secured scientific and public support, have a specific entity assigned to do the work and an implementation budget associated with it -- a strong case that the action is "reasonably certain to occur" can be made. In that light, the staff recommends that the Council continue to advise Bonneville and others working on the FCRPS Biological Opinion and Proposed Action that there are over 500 proposals that were submitted on January 10<sup>th</sup> that are candidates for consideration of any off-site mitigation element that may be part of the those ESA products being developed. These proposals are being reviewed by the ISRP and also local groups familiar with subbasin plans, and in many cases, recovery plans that have been built upon subbasin plans.

It is possible that Bonneville may make its best efforts to utilize the project selection process for meeting any off-site ESA requirements that are developed, but that there remain "gaps" that it believes it needs to address. Should this become a reality, the staff recommends that the Council ask Bonneville to fully coordinate its response to filling those gaps with the Council, and that any additional or modified process for filling "gaps" be designed to have the same high standards for scientific review and public review that attends the Council's general project selection process.

**Comment received:** Bonneville's response indicated general support for the staff recommendation of integrating Fish and Wildlife Program and ESA needs, but expressed some concern about province allocations: "We do have some concern that the existing province

funding allocations may complicate priorities derived from subbasin plan assessments and the review and prioritization process currently underway. It will be important for NPCC and BPA to consider the impact and limitations of these allocations as the review of project proposals proceeds”.

**Staff recommendations:** No change from preliminary recommendations.

**Committee Recommendation:** The Committee accepted the staff recommendation. The Committee recommends to the Council that it and its staff continue to encourage Bonneville to make any specific ESA-based needs known as early as possible. Further, the Council and its staff should continue to coordinate with Bonneville, NOAA and others in all fora, to make those agencies aware of the schedule and process underway for choosing Bonneville funded fish and wildlife projects to be implemented in FY 07-09. Finally, the Committee recommends that the Council continue to advise Bonneville that should specific ESA-based required activities are not addressed by the proposals under review or that are ultimately recommended for funding by the Council -- if there are “gaps” -- that Bonneville work with the Council to establish the means of funding and the process for filling “gaps.”

#### **4. Transition to integrated regional monitoring and evaluation framework**

The Fish and Wildlife Program calls for a monitoring program to evaluate whether the individual actions in the subbasins are achieving the objectives of the program stated at the basin and province level. In making its project funding recommendations, the Council seeks to prioritize monitoring activities and methods to evaluate the effectiveness of Program activities and trends in fish and wildlife populations and habitat conditions.

When it approved guidance for the 2007-2009 project selection process, the Council recognized that regional parties have collaborated to define common protocols for monitoring watershed conditions, population trends and the effectiveness of Program measures. The promise of this collaboration is that the information from individual projects and subbasins can “roll up” to broader geographic scales for evaluation of the success of the Program in meeting its objectives.

While this collaborative effort continues, the Council is ready to confirm the priorities for funding monitoring within each of the “H’s” that affect salmon and steelhead survival as well as resident fish and wildlife response to Program measures. In the 2007-2009 recommendations, the Council can define expectations for the function that specific projects should perform in support of regional evaluation. The Council can also define which monitoring methods it will prioritize for Program funding and plan for a transition for currently funded methods over a specific period of time.

**Preliminary staff recommendation:** This recommendation is organized by the components of monitoring needed for Program evaluation. These components relate to each other to provide information on the overall status of fish and wildlife populations in response to Program measures.

**1. Hydrosystem survival:** The Council will confirm with NOAA Fisheries, the federal action agencies, and the region’s fish and wildlife managers that the design and methods of

smolt and adult passage monitoring meets current management needs for guiding river operations annually and evaluating trends in passage survival. The staff has asked Bonneville to review these functions for meeting the requirements of the current Biological Opinion. The Council will determine that the data from passage monitoring is collected and made available consistent with the Program.

**2. Habitat:** The Council is developing priorities for the collection of data to evaluate changes in watershed conditions relative to the assessments used for the first set of subbasin plans. Because much of that data comes from other funding agencies, the Council will set priorities for collecting such data regionally and to support confirmation of monitoring protocols for regional consistency. The Council is also prioritizing limited research focused on fish habitat project effectiveness.

**2a. Watershed condition data funded through the Program:** Where projects are prioritized to collect data that indicate the condition of habitat for fish and wildlife, the Council recommends that such data be focused first on the priority indicators needed to inform future subbasin planning. For discussion purposes in this memo, those indicators are: water temperature, flow, passage, benthic macro-invertebrate assemblages, large woody debris, sedimentation, dissolved oxygen, nutrients, and stream morphology.

The Council intends to prioritize funding away from project tasks that collect data on other indicators, or that serve only to inform evaluation of the individual project without specific justification. This transition should be accomplished within three years or the next call for project recommendations.

**2b. Aquatic habitat project effectiveness:** The Council in its guidance for the 2007-2009 solicitation stated that monitoring for individual habitat projects should be limited to five percent of the project costs. The staff recommends that the strategy to obtain more information on the effectiveness of habitat restoration on fish survival be to prioritize three “intensively monitored watersheds” experiments. These are planned being developed in the Wenatchee, John Day and Salmon River subbasins and were initiated during the last Mainstem/Systemwide process. With PNAMP’s ongoing coordination, these three projects are linked to similar work on the Pacific Coast funded through other sources. In confirming future funding for these experiments, the Council should consider the strength of these experiments in being able to demonstrate that discrete habitat actions result in measurable change in fish survival.

**3. Population status and trends:** The Program currently funds a wide array of population monitoring which supports both management and ESA delisting analysis. Other work in the basin is funded from other sources such as license fee revenue and other mitigation programs.

For anadromous fish population monitoring proposed for funding in the Program, the Council expects the methods to be consistent with the randomly distributed sampling designs endorsed by the ISRP in its 2005 retrospective report. Prioritized proposals using other sampling designs should provide a transition plan as part of Bonneville contracting.



The appropriate distribution of monitoring sites for abundance, productivity and diversity needs more discussion as part of ESA recovery planning. Distribution may also be determined by the adoption of provincial objectives into the Council Program, currently planned for 2007. Pending those determinations, the Council staff proposes to complete a rough inventory of the distribution of monitoring in the currently funded program. When coverage to support ESA delisting requirements and provincial objectives is determined, the Council will plan a transition to support the prioritized distribution.

Where population monitoring for resident fish is prioritized for funding through the Program, the appropriateness of methods will continued to be reviewed by the ISRP. The staff does not propose a standard protocol at this time.

For wildlife population monitoring, the ISRP has continued to urge the Council to prioritize census monitoring to measure the response of target populations to acquisition and management of habitat. Currently, the Program calls for monitoring habitat value using the Habitat Evaluation Procedure (HEP) methodology. Periodic surveys of the quality of habitat protected by the Program are efficient and will be prioritized in the Mainstem/Systemwide Review. More directly counting estimating the changes in target wildlife species population and determining the specific influence resulting from habitat acquisitions is likely to be more expensive and will require the development of landscape level population estimates. The staff recommends continuing to use the HEP methodology as an accounting mechanism for tracking Bonneville's obligations for wildlife mitigation in the Program but will continue to review alternative procedures for monitoring population responses as proposed by the ISRP.

**4. Hatchery monitoring:** The Program funds significant activities related to hatchery performance. There are two issues for Council guidance in the 2007-2009 project selection process: linking the Program's supplementation effectiveness monitoring into a more integrated regional experiment, and the level of funding for monitoring of hatchery performance against project objectives and effects on naturally spawning populations. The Council also continues to collaborate on regional hatchery review and reform processes.

**4a. Prioritize Designate the design of an integrated supplementation experiment as a priority action:** The monitoring designs for each of the Program's supplementation projects have received ISRP review for design and outcomes. The ISRP is reviewing each project's design again this year. However, both the ISRP and ISAB have urged that the monitoring of projects be linked together so that the results from one project might serve the needs of others and diminish the need for each project's design. For example, the control stream used for one project might serve others with similar applications of supplementation techniques. The staff recommends that the Council prioritize development of an integrated regional design for completion and scientific review in 2007.

**4b. Hatchery performance monitoring:** For 2007-2009, the staff recommends funding that the ISRP review determines is appropriate, subject to budget capacity. with ISRP review of the appropriateness of each hatchery's performance monitoring in 2007-2009 The Council staff and Bonneville should determine that the data from each project's monitoring is being reported to the region consistent with the Program's standards for timeliness and accompanying metadata.

**5. Estuary habitat status and trend monitoring:** As called for in the Program, the ecological status of the Columbia River estuary and plume has been treated as a planning unit in subbasin planning and project selection. The 2000 and 2004 Biological Opinions also assigned responsibility to the federal action agencies for monitoring of the estuary. Although there have been several successful estuary research projects, the design of a pilot estuary monitoring project has not been successful in independent scientific review. Proposals have been made for 2007-2009 and are being reviewed by the ISRP. Monitoring the conditions of the estuary involves a number of other funding partners so the staff will focus on the appropriate role for Bonneville funding in the 2007-2009 project selection process.

**6. Ocean harvest monitoring:** Program funding supports monitoring of harvest in the ocean through at least two methods: directly through funding of coded wire tag programs and indirectly through dam counts. The staff recommends addressing the adequacy of information and appropriate share of Bonneville funding in the Mainstem/Systemwide project review.

**7. Data management:** Collecting the data from each of these monitoring components requires specific commitment for delivery to regionally accessible sources. The Council has a memorandum of agreement with other regional parties to confirm a work plan for a web-accessible data portal. The Mainstem/Systemwide project review will prioritize funding for a request for support of the portal with other funding partners. The review will also address the necessary scope and functions of the Streamnet project that is the primary collector and maintainer of data from Program-funded projects. The staff recommends working with sponsors and Bonneville project managers to determine if proposed ongoing projects deliver their data to regional sources consistent with the Program. The staff recommends that meeting this standard become a condition of future contracting and verified by Bonneville project managers as part of project performance review.

**8. Basinwide and province performance evaluation:** The Program calls for adopting province-scale objectives which will serve as benchmarks to assess how individual actions in subbasins are adding up at broader scales. The Council plans to open the Program for proposed amendments to adopt provincial objectives this year.

Performance against these objectives will guide future funding allocations and management emphasis. From the data collected from the monitoring components listed above, the staff recommends that monitoring of performance against provincial objectives use specific “high level indicators” and for discussion in this draft, those indicators be:

- Fish survival or productivity indicators
- Spatial distribution
- Annual population growth rates
- Ocean productivity indices
- Hatchery releases and return rates
- Habitat conditions, summarized from the watershed condition indicators
- Harvest rates

- Adult and juvenile passage survival through the mainstem dams

**9. Reporting:** The staff recommends prioritizing the production of an annual report that summarizes the data from the high level indicators proposed above. The Columbia Basin Fish and Wildlife Authority is funded to produce an initial summary report for 2006. The staff expects the content to evolve as provincial objectives are adopted into the Program and specific indicators are confirmed. In the meantime, the staff recommends that the Council review and approve the content for the initial report funded for 2006. CBFWA is presenting an initial content proposal to the Council's Fish and Wildlife Committee at its March meeting.

The staff also recommends prioritizing funding for an on-line peer-reviewed journal for Program-funded research a priority. Specific proposals or an appropriate placeholder for an RFP for such a journal will be reviewed in the Mainstem/Systemwide proposal review.

**Comment received:** The Committee discussed the tasks proposed by the staff to apply this guidance in developing project funding recommendations. Committee members asked for regular status reports and the names of the staff working on each task.

**Staff Recommendation:** Reaffirm the preliminary staff recommendation.

## **5. Assumptions for use of Bonneville's capital borrowing authority to finance certain recommended proposals**

For Fiscal Years 2007 through 2009, Bonneville has stated that it will make available up to \$36 million for "capital" investments. Bonneville has also stated that use of these funds is subject to particular rules and standards prescribed by Bonneville in its "Capital Funding Policy for Fish and Wildlife Projects."

The Council has differed with Bonneville for the last few years over these rules for access to Bonneville capital for the fish and wildlife program. The Council has stated its belief that Bonneville has read the governing legal requirements and accounting rules more strictly than warranted, resulting in more restricted use of capital funding than is necessary or prudent. Specific issues have included whether a project must cost more than \$1 million to be eligible for capital funding; whether and how separate but related actions that each cost less than \$1 million may be aggregated to reach the threshold; whether a "crediting" mechanism must be in place first for a project to be eligible for capital funding and of what type; when and how planning expenses for a capital project may be capitalized; and more.

In the last set of multi-year project recommendations (in the provincial review process), the Council recommended projects for capital funding based on our understanding of the rules of access for capital funding. This was just before the Bonneville rules and policy were clarified. The end result was that the Council recommended a number of projects for capital funding that Bonneville did not allow to be funded in that way. Projects either stalled or had to be funded out of the very tight expense budget if they were to go forward, while the available capital funds went largely unused.

The Council directly raised these capital policy issues with Bonneville in the Council's funding recommendation decisions in FY05 and FY06. Bonneville held firm to the rules of access in its capital policy. The only two types of projects that have managed to satisfy the capital rules in any systematic way have been the actual construction costs of major hatchery facilities and large land acquisitions for wildlife mitigation (and last year, Bonneville allowed certain related wildlife land acquisition projects to be aggregated to reach the \$1 million threshold). Project types that Bonneville has deemed *not* to satisfy the capital rules have included other wildlife land acquisition projects (as less than \$1 million); nearly all land acquisitions to protect habitat for fish, even if well over the monetary threshold, on the grounds that the program lacks a crediting mechanism for fish habitat acquisitions (outside of the context of the Hungry Horse and Libby mitigation programs); planning expenses for major capital facilities; and large coordinated investments in fish habitat protection through installation of fish screens or other passage improvements, water optimization and other similar work. The application of the rules for access to capital in this last category may be tightening.

The Council needs to decide how to proceed as it reviews project proposals for in all these areas for FY07 to 09. It seems pointless once again to include projects in the capital budget that we know Bonneville will conclude do not satisfy the rules for access to capital, and then write up the issue in the decision memo. The practical choices are to yield (for the moment) or elevate the issue in a more substantial way, through a higher profile political or legal strategy.

**Preliminary Staff Recommendation:**

The staff's preliminary recommendation is to acquiesce in the Bonneville policy for the purposes of constructing the FY 07-09 budget recommendations. Acquiescence does *not* mean giving up on seeking changes in the capital policy. What it would mean is that in constructing the planning budget recommendation for the coming fiscal years, the Council would develop the capital and expense parts of the budgets using Bonneville's interpretation rules for access to capital. At the same time, the Council could pledge to continue to try to get Bonneville to modify those rules or (more likely) be more flexible in their application, with the possibility of adjusting the set of projects in the capital side of the budget in the future if the capital policy changes or moderates in application.

**Comment received:** The Committee largely agreed with the preliminary staff recommendation. While the Committee did not endorse in every particular what it understands to be Bonneville's capital policy, it did decide that what is most immediately important is having Bonneville clearly document its capital funding policy -- to be clear about what the rules are and to be consistent in applying them. However, the Committee was not willing to accept without more investigation and discussion that the expense fund for fish and wildlife be decremented retroactively because some projects were identified by Bonneville that have been previously capitalized but do not meet capital funding requirements. The Committee accepts that those projects need to be funded in the future with expense funds.

**Staff Recommendation:** No change from the Preliminary recommendation. The staff will work with Bonneville to determine if there is flexibility around Bonneville's initial comment that the expense fund will have to be decremented retroactively for the projects recently reclassified from capital eligible to not being capital eligible.

## 6. Funding the Operating and Maintenance Costs of a Maturing Program

The fish and wildlife program is in its third decade of implementation and is maturing. That is, over the years, program implementation has included the development of infrastructure that is durable, providing ongoing fish and wildlife benefits. Consider the types of projects funded in the 20+ years of fish and wildlife program implementation -- the construction of hatcheries; building riparian fences; installing fish-friendly irrigation structures and screens; securing interests in land; building housing facilities. In most cases, these investments have been made with an expectation, in fact a commitment in many cases, that Bonneville would provide funding post “build-out” to operate and maintain these facilities to continue the flow of fish and wildlife benefits over a long period of time.

The Council has observed that the costs to operate and maintain the infrastructure built up under the fish and wildlife program is growing, and consuming a larger share of the available expense budget each year. The Council has observed that if this trend continues without a significantly expanding expense budget, there will be diminishing flexibility in the program to start new projects directed at emerging or shifting priorities. This is the basic “problem statement” that the staff suggests a discussion of -- that operations and maintenance costs are consuming an ever-increasing portion of the available budget reducing new opportunity and flexibility in the program.

A critical part of the background for a discussion on ways to fund the operation and maintenance of the program is to recognize from the outset that the historical approach to implementing the fish and wildlife program is quite different than many of the “grants-type” programs we see operating in the region or nationally. That is, most grants-type programs provide a single block of funding to accomplish the objective. In those grants programs, the types activities funded don’t require a continuous funding stream for operations and maintenance, or those future operations and maintenance funding needs are assumed by the grantee in some way. On the other hand, because Bonneville has a legal obligations to accomplish fish and wildlife protection, mitigation and enhancement, and those obligations extend over time, this program has always sought to ensure that the flow of benefits from initial investments in infrastructure continue over time as well. A second critical part of the background is to recognize that operations and maintenance funding has usually been developed on a project-by-project basis, with each project identifying its requirements but without really presenting a long-term maintenance plan and without any form of uniform or standard operations activities and costs guidelines. And, as noted above, operations and maintenance costs have been expensed in most instances.

The staff believes that the Council, Bonneville, and others should consider alternative approaches for developing and funding the continued operation and maintenance costs of the infrastructure built as part of the program. Trust funds, capitalization, benchmarking costs, explicit maintenance plans and other issue should be explored. In short, it could be said that it is time to start looking at the entirety of the fish and wildlife program as a mature and durable program and develop a more cohesive and comprehensive maintenance plan for it and more creative and efficient ways to fund that maintenance plan.

**Preliminary Staff Recommendation:** The Committee should consider and discuss the “problem statement” noted above -- that as the program matures, operations and maintenance costs are consuming available budget and limiting options for new and emerging needs and

priorities. If the Committee accepts that problem statement and believes it is a priority issue, it should direct staff to further scope the issue and develop proposed alternatives for Council and regional consideration.

## **7. Future Project Selection Process -- Organization, Timing, and Other Particulars**

The organization and schedule of the project selection process being used to make recommendations for FY 07-09 funding was born out of necessity. The Council knew and made clear that it was not the ideal. This current process was developed to refresh Council, ISRP and public reviews of proposals that had not been reviewed for several years in some instances, and to begin the alignment of projects to recently completed and adopted subbasin plans. However, neither the Council, its staff, the ISRP, nor the participants in the process believe that this sort of project section process -- all proposals reviewed on a compressed schedule -- should be sustained into the future. So, even as we conduct this FY 07-09 process, the staff suggests that it is time to start designing what the next project selection process should look like, what schedule it should have, and what its objectives are.

First, note that there are some basic elements of any project selection process -- project proposals are developed using standardized forms; independent scientific review is conducted on the proposals, there is public review of ISRP reports, prioritization of the work against program objectives and available budget, and ultimately Council review and recommendations to Bonneville. Further, the project selection process requires principles or bases for choosing how to allocate the funding made available by Bonneville across the region. A definite schedule is required so that the many interests participating (sponsors, Council, ISRP, Bonneville) can plan their participation and deliver the products they are responsible for within the process. Mindful of those basic elements or broad parameters of any project selection process, we would like to discuss alternative designs for the next project review. At this time, we have two concepts we would like to start exploring:

- **Geographically focused reviews -- Province oriented**

This “model” is the former rolling provincial review. The Council started the project selection process by calling for proposals in a first set of provinces and started working through the review process. A call for proposals in a second set of provinces was initiated before the first was completed; then a third set of provinces, and so forth. Proposals for all types of projects -- new, ongoing, habitat focused, hatcheries, research, etc -- were invited for whatever set of provinces was in the review. The ISRP did site-visits, heard sponsor presentations on proposals, and public and Council review was deliberate and in-depth. This sequenced and staggered provincial review was conducted over more than two years.

The Council could choose to return to the geography based staggered province review process for the next round of project selection.

- **Theme or “Compartment” reviews -- Topic oriented**

As the Council was considering how to design the current review process, there was considerable discussion about developing a different model for project selection -- one that is not based so strictly on provinces or geography, but rather, one that seeks, sorts and prioritizes project

selection by “compartment” or project type. Some of the observations made around this conversation were that it might be useful to have projects of a similar type reviewed and prioritized as a compartment, without regard for their location. It may allow cost, and method comparisons among similar types of projects, which could facilitate cost benchmarking, or development of standard or common management practices.

Compartment review may allow the Council, ISRP, and sponsors to recognize some fundamental differences between some ongoing project proposals differently and new proposals. For example, does it make sense to treat the operations and maintenance budgets for hatchery facilities, lands acquired for wildlife, etc as entirely discretionary? Said another way, is it really accurate to suggest that every dollar in the annual expense budget is truly discretionary and available for new proposals, or is some portion of that essentially committed to sustain program-developed infrastructure? (Consider the discussion from Issue 6 about Operations and Maintenance above). Further, does it makes sense to standardize the duration of the Council’s funding recommendations, or should the projects in some “compartments” be given longer (or shorter) duration funding recommendations?

Attached to this document is a diagram that has been used by the staff to illustrate and discuss at a staff level the concept of a compartment or theme based project selection process.

**Preliminary Staff Recommendation:** The staff would like the Committee to start to discuss alternative approaches to the next project selection process. Advice on what policy level objectives it believes the Council may want to pursue in the next round of project selection would help the staff develop one of the two process models more fully, or to develop other models (possibly a combination of the two). Further, as recognized this fall, if the Council chose an approach and started the review process within the next year, it would be possible to revise the FY 09 recommendations it makes for some set of projects in this current process (see the staggered review diagram attachment) -- this is not to say such a revision is a necessity, just a possibility.

### **III. Potential Programmatic Issues for Council Consideration in Future Iterations**

The staff anticipates that the following programmatic issues will require some Council consideration and direction in the coming months. They are not critical at this point in the project selection process. However, the staff wants the Council and the public to see this list so that it may anticipate where the staff and Council will be going next.

- **Status and use of the Council’s Research Plan in establishing research sequence and priorities**
- **Purpose of identifying funding and implementation partnerships in recommended proposals**
- **Recognition and use of cost-sharing MOU between USDA Forest Service and the Bonneville Power Administration**

- **Process for annual review and renewal of recommendations in Fiscal Years 2008 and 2009.**

Each year the Council will conduct a process to review and confirm the annual budgets recommended here. As part of that process, the Council asks Bonneville to present a summary from contractor performance reports, the accomplishments of each project relative to the proposal that was recommended by the Council. The report should explain any variances in actual performance from what was proposed.

- **Within-year budget adjustment process**
- **Integrate Step review with subbasin plans, and incorporate ISRP comments.**
- **Coordinated review of other direct funded programs**

The LSRCF program is not part of what is considered the traditional “direct program” funded by Bonneville. Historically, the program (U.S. Fish and Wildlife Service) received annual congressional appropriations, and Bonneville reimbursed the Treasury for those appropriations. This “reimbursable” program was not originally specifically subject to ISRP and Council review under the 1996 Gorton amendment to the Act. However, in 1998, the U.S. Congress’ Senate-House conference report on the fiscal year 1999 Energy and Water Development Appropriations bill directed the Council to have the ISRP to annually review all fish and wildlife projects, programs, or measures included in federal agency budgets that are reimbursed by Bonneville using the same standards and criteria of the 1996 amendment, and to report to Congress on those reviews. The LSRCF is no longer a true “reimbursable” project, and as part of the FY 2007 - 2009 process we have not initiated a review of the program.

#### **IV. Project Specific Issues**

*The staff anticipates that most project specific issues will start to emerge as the local groups and the ISRP complete their work in early to mid-June 2006. We include this section as a placeholder so that the Council and public can see the full framework of this rolling memorandum.*

##### **Basinwide Projects**

##### **Blue Mountain Province**

##### **Columbia Cascade Province**

##### **Columbia Gorge Province**

##### **Columbia Plateau Province**

##### **Lower Columbia Province**



## Estuary Province

## Middle Snake Province

## Mountain Columbia Province

### A. Province-Wide Issues

#### 1. Consideration of proposals that cannot reference an adopted Subbasin Plan

The Council received five project proposals from areas without subbasin plans in the Mountain Columbia Province. Three of the projects (one in the Bitterroot and two in the Clark Fork) are requests for funding for habitat work. The other two projects are proposals to develop a subbasin plan in the Blackfoot and Bitterroot respectively. Because the local review groups were asked to prioritize projects largely using subbasin plans, these projects obviously do not fit neatly into that process.

##### a. Projects to Develop Subbasin Plans in the Blackfoot and Bitterroot

The Council recognized during the subbasin planning process that subbasin plans were not being developed at the time in the Bitterroot and the Blackfoot for a variety of reasons. The Council also recognized at the time that plans would be developed for these subbasins in future proceedings (see Findings adopted in the Subbasin Plan Amendment Process).

**Preliminary Staff Recommendation:** The Montana Council members consistently expressed their desire that provision be made for developing additional subbasin plans in Montana in the future. The Council supported the State's desire to defer some subbasin planning development into the future. The following language was adopted by the Council in its September 2005 *Subbasin Plan Amendments Findings and Response to Comments*:

*The decision to focus on two of the five Montana subbasins in this first subbasin planning exercise was made by the State of Montana and the tribal co-managers, largely because there is little to no history of Bonneville funding in the other basins. The Council deferred to this decision. The Council understands that Montana and the tribes intend to develop recommendations for the other subbasins in future program amendment proceedings.*

The staff recommends that the proposals that have been submitted to develop subbasin plans for the Blackfoot and Bitterroot Subbasins be reviewed in the FY 07-09 process on their merits. A statement of local support from those reviewing proposals in the Mountain Columbia would be ideal, but ultimately, this is a Council decision. If Montana acknowledges that developing these plans is a priority for the State, and if the Committee reiterates that filling out and completing the subbasin level provisions of its program is a goal, these projects should continue through the review process and should be considered candidates for Bonneville funding from the Mountain Columbia Province allocation. The Council and staff will want to coordinate closely with the sponsors to ensure that the subbasin plans are developed subject to the same standards as those already adopted by the Council.

b. Projects in Subbasins with No Subbasin Plans

The 2007-2009 project selection process is largely based on implementation of the adopted subbasin plans. There are a handful of subbasins in the region that have not yet developed subbasin plans for the Council's program. The Bitterroot and Clark Fork Subbasins in Montana are two of those subbasins. The Council should decide whether this automatically excludes the project proposals from these areas from funding during this process, or whether information like ISRP guidance, biological opinion or ESA requirements, or other pertinent information should be considered before making a funding decision.

**Preliminary Staff Recommendation:** While subbasin plan level provisions offer the most direct and pertinent program direction for evaluating and prioritizing proposals for subbasin-scale habitat work, there remains the broader program provisions as a standard -- the 2000 Program/2003 Mainstem Amendments have provisions that habitat work may be evaluated against. The question becomes whether or not these proposals are a priority within available Mountain Columbia budget. The absence of subbasin plans might makes it *harder* for project sponsors to demonstrate they propose priority work when they are competing with projects that can link not *only* to the 2000 Program, but also the adopted detailed subbasin plan. While it may be difficult, it is not impossible and the staff does not recommend foreclosing that opportunity to these project sponsors. The staff recommends that if these projects emerge as prioritized within available budget (and subject to ISRP review and Council consideration) that they be candidates for funding.

**Mountain Snake Province**

**Intermountain Province**

**Upper Snake Province**

**IV. [Placeholder for Council determinations/findings that address 4(h)(10)(D)]**

**How the Council fully considered the recommendations of the ISRP**

**How the Council implemented other requirements of the 1996 Amendment to the Northwest Power Act.**

**Cost effectiveness**

**Taking into consideration effects of ocean conditions**

---

w:\po\ww\2007\0709rollmemo3-30.doc

### Draft rolling issue memo calendar \* (draft March 30, 2006)

\*This chart represents an approximate timeframe for addressing programmatic issues in the FY 2007-2009 Project Selection Process. This is just an approximation. The order that issues will be addressed will likely change from time to time. Some issues may be resolved without needing Council attention and new ones may be introduced and need immediate attention.

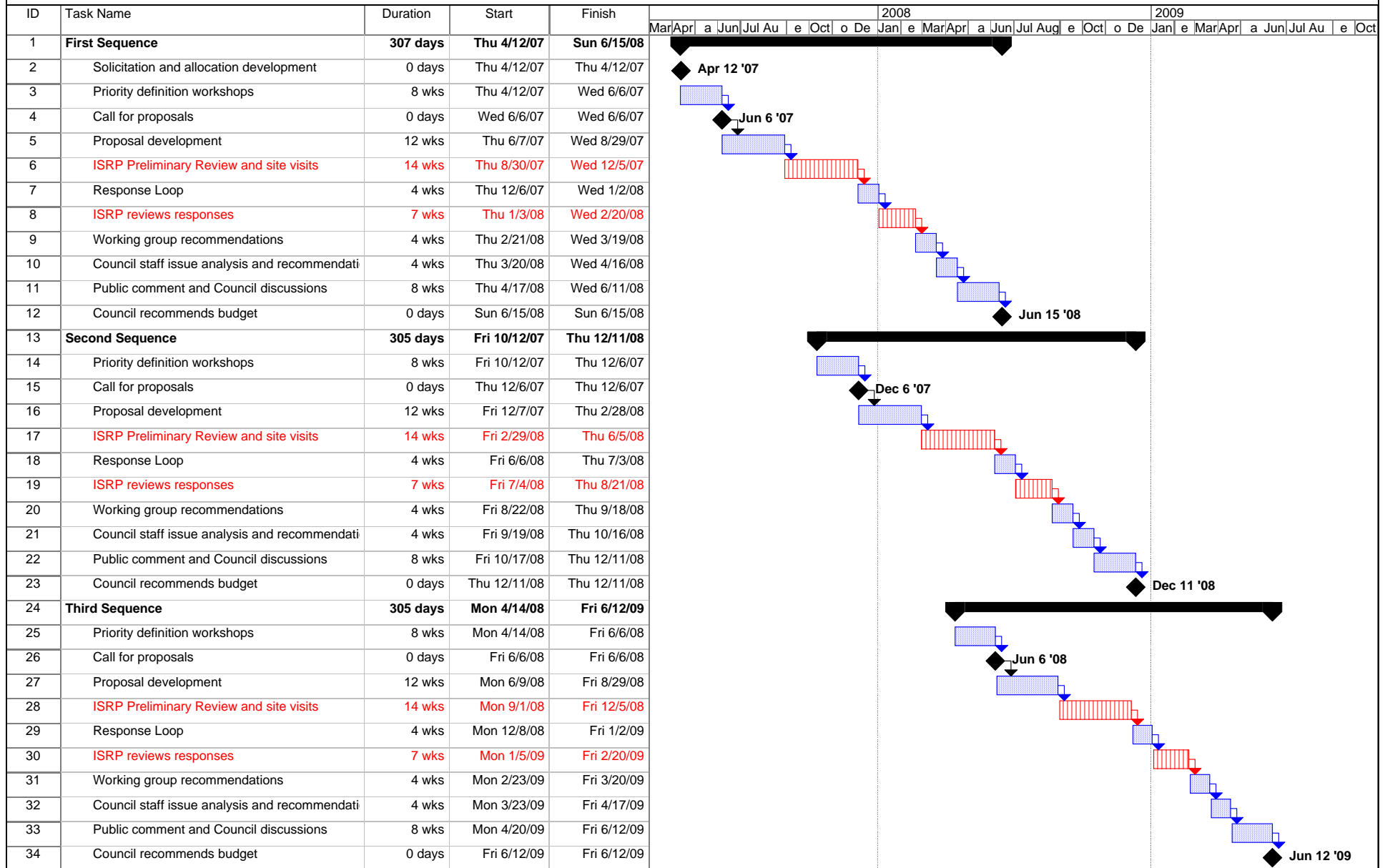
	Feb	Mar	Apr	May	Jun	Jul	Aug	Sept	Oct
F4, 1	Confirm funding, ESA integration	Integrated M&E framework, Capital use	O&M Next selection process	Coord w/ other direct funded prog, In lieu, Partnership/cost sharing,	SOY 08/09, Within yr process, STEP rev	Project Specific Issues			
F4, 2		Confirm funding, ESA integration	Integrated M&E framework, Capital use	O&M Next selection process	Coord w/ other direct funded prog, In lieu, Partnership/co st sharing,	SOY 08/09, Within yr process, STEP rev	Project Specific Issues		
C			Confirm funding, ESA integration	Integrated M&E framework, Capital use	O&M Next selection process	Coord w/ other direct funded prog, In lieu, Partnership /cost sharing,	SOY 08/09, Within yr process, STEP rev	Project Specific Issues,	
other				Staff draft recommendation MS/Sys	ISRP prelim report Local priorities				Council recommendations

F4, 1= first discussion with F&W Committee, present preliminary staff recommendation

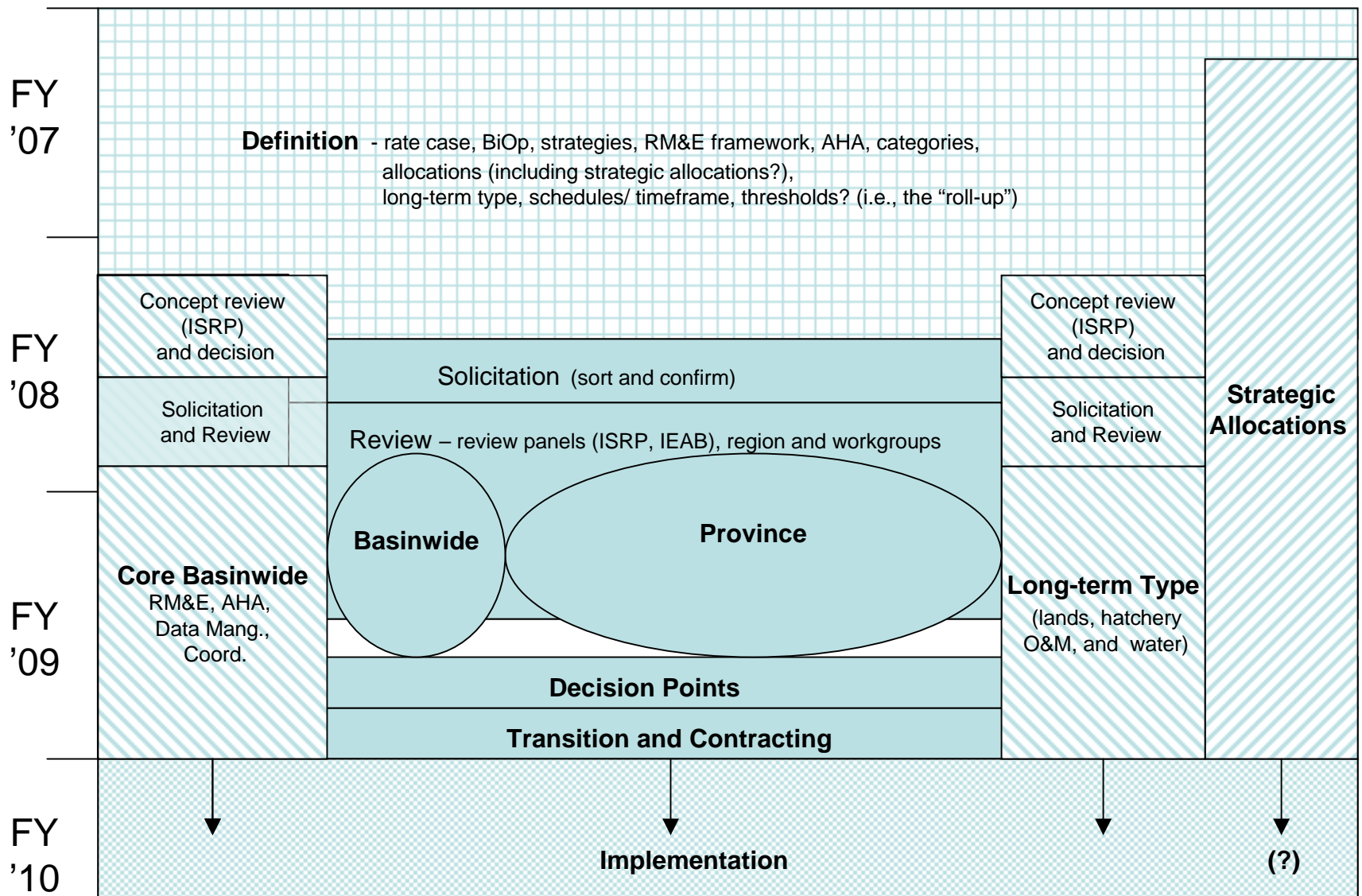
F4, 2=Green - second discussion with F&W Committee, present staff recommendation

C =Discussion with full Council, present F&W Committee recommendation

## Conceptual Timeline for Next Rolling Provincial Review



Project: Next provincial review.mpp Date: Tue 8/30/05	Task		Milestone		External Tasks	
	Split		Summary		External Milestone	
	Progress		Project Summary		Deadline	





## Department of Energy

Bonneville Power Administration  
P.O. Box 3621  
Portland, Oregon 97208-3621

Environment, Fish and Wildlife

March 30, 2006

In reply refer to: KEW-4

Northwest Power and Conservation Council  
Ms. Rhonda Whiting, Chair  
Fish and Wildlife Committee  
851 S.W. Sixth Avenue, Suite 1100  
Portland, OR 97204-1348

Dear Ms. Whiting:

Enclosed to this letter is a spreadsheet of currently implemented ("ongoing") projects for which the continuity of Fish and Wildlife Program contracting is an issue this fall. As we indicated in our recent letter (March 3, 2006), it is critical that we manage the transition between budget periods for the contracts associated with these projects. Our goal is to provide uninterrupted implementation of projects that will continue into the '07-'09 period, promote an orderly close-out of those projects that will not, and minimize the cost of addressing this issue so as not to foreclose additional spending on new project starts. Therefore, we are returning to you for your advice and assistance in addressing this "transition period" issue.

As you are aware, there are 151 projects (190 contracts) for which the current solicitation process schedule raises funding continuity concerns. (See enclosed list.) While some of these projects may not be high priorities relative to new proposals, other projects must continue without interruption to achieve their high priority biological objectives. During the regional solicitation workshops, Bonneville Power Administration (BPA) and the Northwest Power and Conservation Council (Council) staff committed to resolving this transition issue. BPA subsequently provided the Council with information on possible transition tools including short-term contracts (e.g., bridge funding all expiring contracts for 3 months) and a sequenced decision (e.g., a final decision to close-out or continue transition period projects by June 30).<sup>1</sup>

We understand the Council interest in evaluating new and ongoing project proposals on a common basis, in order to promote the appearance of fairness in the solicitation process. While we acknowledge the desirability of simultaneous review and selection that does not differentiate new from ongoing proposals, an early decision for some projects does not bias the process in favor of ongoing project proposals any more than spending money

---

<sup>1</sup>See: BPA, Environment, Fish and Wildlife, *Interim Options for Contracts that Expire September 30 through December 31, 2006*, January 17, 2006. This document was provided to the Council at the January, 2006 Council meeting.

on them would in the near-term without a review. We believe it is also important to weigh the value of a complete package of simultaneous project funding recommendations in the fall, against business management considerations that include the increased costs of bridge funding to accommodate an October decision. For example, short-term contracts that merely defer decision-making are inherently inefficient. They can send the wrong implementation signals and add significant labor costs. In particular, contracting must be undertaken twice for each project that ultimately continues; for those that do not continue, newly initiated work must be terminated, and close-out costs renegotiated.

The impacts are predictable. Contracting costs paid to BPA Supply Chain services alone would increase by an estimated \$200,000. In addition, bridge funding would increase the workload required of BPA's Fish and Wildlife division staff. While not a *per se* increase in fixed costs, unnecessarily redundant administrative processes will strain BPA's contracting resources at a particularly inopportune time this fall, following a Council decision. The repetitive demands of short-term contracts also divert the time and attention of our contract implementation partners otherwise spent on project tasks to the process of contracting. All of these impacts add real "costs" that potentially delay the prompt initiation of contracting for newly recommended and other ongoing projects, and compromises efficient, effective Program implementation.

In addition to transaction costs and staff impacts, short-term contracts would fund all projects irrespective of their evaluation in the current solicitation, and their priority for the '07-'09 implementation period, relative to other spending alternatives. Overall, bridge funding these projects through January would "occupy" approximately \$13 million of the available FY 07 budget. The actual additional cost of bridge funding would depend on the number of projects that were ultimately closed out. For illustration purposes, if half of the projects that were not listed as "base" (in the joint CBFWA-Council-BPA staff assessment and *Program Appraisal*) were subsequently closed-out following an October Council recommendation, bridge funding would have reduced the Program budget for FY07 by approximately \$3.9 million. By comparison, a sequenced decision would not require duplicative contracting activities, and would conserve available Program dollars for those high priority projects identified and recommended by the Council through the FY07-09 solicitation process.

We also believe that there will be sufficient information (e.g., ISRP preliminary review, province reviews, and a mainstem/system-wide review) for the Council and BPA to make an informed judgment about funding on an accelerated basis. After further considering the options, we have concluded that a sequenced decision, informed by these ongoing reviews where possible, is the most responsible path forward because it maximizes the available FY2007 budget and does not waste limited resources by asking Program contractors and BPA project, contract, and financial management staff to contract twice for the same project.

While we recognize that a sequenced decision will accelerate Council and BPA evaluations that would otherwise occur in the summer, we are committed to moving forward with this approach. We hope that you will agree and support this approach to



make the best use of Program dollars, and invite you to recommend transition-period projects for continuation or close-out by June 16, 2006. BPA implementation funding decisions must be made no later than June 30, 2006, in order for contracts to be in place by October 1st. Just as we jointly reassured the region in the initial Council Provincial Review Workshops that we would address this issue, we look forward to working closely with you to review and prioritize these projects to meet this objective, consistent with the solicitation process, over the next few months.

Sincerely,

/s/

William C. Maslen  
Director of Fish and Wildlife

1 Enclosure:  
Contracts that Expire September 31 through December 31, 2006

cc:

Mr. Doug Marker, Northwest Power and Conservation Council  
Mr. Mark Fritsch, Northwest Power and Conservation Council  
Ms. Patty O'Toole, Northwest Power and Conservation Council  
Ms. Stacy Horton, Northwest Power and Conservation Council  
Mr. Tony Grover, Northwest Power and Conservation Council  
Mr. Kerry Berg, Northwest Power and Conservation Council  
Mr. Karl Weist, Northwest Power and Conservation Council  
Mr. Larry Cassidy Jr., Northwest Power and Conservation Council  
Ms. Judi Danielson, Northwest Power and Conservation Council  
Ms. Melinda Eden, Northwest Power and Conservation Council  
Ms. Joann Hunt, Northwest Power and Conservation Council  
Mr. Brian Lipscomb, Columbia Basin Fish and Wildlife Authority  
Ms. Amy Langstrom, Columbia Basin Fish and Wildlife Authority  
Mr. Tom Iverson, Columbia Basin Fish and Wildlife Authority

**INTENTIONALLY LEFT BLANK**

Table 1. Contracts that Expire September 31 through December 31, 2006

Project #	Contract Title	Contractor Name	End Mo 2006
1982-013-01	1982-013-01 EXP CODED WR TAG - PSMFC	Pacific States Marine Fisheries Commission (PSMFC)	December
1982-013-02	1982-013-02 EXP CODED WIRE TAG - ODFW	Oregon Department Of Fish and Wildlife (ODFW)	December
1982-013-03	1982-013-03 EXP CODED WIRE TAG - USFWS	US Fish and Wildlife Service (USFWS)	December
1982-013-04	1982-013-04 EXP CODED WIRE TAG - WDFW	Washington Department of Fish and Wildlife (WDFW)	December
1983-319-00	PI 1983-319-00 NEW MARKING AND MONITORING TECHNIQUES-B2CC	National Oceanic and Atmospheric Administration (NOAA)	September
1983-319-00	PI 1983-319-00 PL NEW MARKING AND MONITORING TECHNIQUES-NON B2CC	National Oceanic and Atmospheric Administration (NOAA)	September
1983-319-00	PI 1983-319-00 NEW MARKING AND MONITORING-B2CC-DIGITAL ANGEL	Digital Angel Corporation	September
1983-350-00	1983-350-0 NEZ PERCE TRIBAL HATCHERY - O & M	Nez Perce Tribe	December
1983-350-00	1983-350-00 NEZ PERCE HATCHERY O & M	Nez Perce Tribe	December
1983-350-03	1983-350-03 NEZ PERCE TRIBAL HATCHERY M&E	Nez Perce Tribe	December
1983-435-00	1983-435-00 EXP LITTLE WHITE SALMON HATCHERY/SPRING CHINOOK	US Fish and Wildlife Service (USFWS)	December
1983-435-00	1983-435-00 PRE-AWARD EXP UMATILLA HATCHERY SATELLITE FACIL O&M	Umatilla Confederated Tribes (CTUIR)	December
1983-436-00	1983-436-00 EXP UMATILLA PASSAGE O&M	Westland Irrigation District	September
1985-038-00	1985-038-00 EXP COLVILLE TRIBAL HATCHERY O&M/M&E	Colville Confederated Tribes	September
1986-050-00	1986-050-00 EXP LOWER COLUMBIA WHITE STURGEON PROJECT	Oregon Department Of Fish and Wildlife (ODFW)	September
1987-100-02	1987-100-02 EXP UMATILLA RIVER SUBBASIN FISH HABITAT IMPROVEMENT	Oregon Department Of Fish and Wildlife (ODFW)	September
1987-127-00	1987-127-00 EXP SMOLT MONITORING FEDERAL - USFWS	US Fish and Wildlife Service (USFWS)	December
1988-022-00	1988-022-00 PRE UMATILLA FISH PASSAGE OPS.	Umatilla Confederated Tribes (CTUIR)	December
1988-053-01	1988-053-01 PRE GRANDE RONDE SPRING CHINOOK STEP 3 SUPPORT	Nez Perce Tribe	December
1988-053-03	1988-053-03 EXP CTWS HOOD RIVER M&E	Warm Springs Confederated Tribes	September
1988-053-04	1988-053-04 EXP ODFW M&E HOOD RIVER	Oregon Department Of Fish and Wildlife (ODFW)	September
1988-053-05	1988-053-05 CAP NE OREGON OUTPLANTING FACILITIES	Oregon Department Of Fish and Wildlife (ODFW)	December
1988-053-05	1988-053-05 CAP NE OREGON OUTPLANTING FACILITIES	Oregon Department Of Fish and Wildlife (ODFW)	December
1988-053-07	1988-053-07 EXP PARKDALE CTWS - HOOD	Warm Springs Confederated	September

	RIVER PROD PROG	Tribes	
1988-053-08	198805308 EXP POWERDALE ODFW - HOOD RIVER PRODUCTION	Oregon Department Of Fish and Wildlife (ODFW)	September
1988-053-08	1988-053-08 EXP OAK SPRINGS ODFW HOOD RIVER PRODUCTION	Oregon Department Of Fish and Wildlife (ODFW)	September
1988-053-15	198805315 RFP EXP HRPP EXPANSION		December
1988-064-00	1988-064-00 KOOTENAI HATCHERY PROJECT IMPLEMENTATION	Kootenai Tribe	November
1988-108-04	PI 198810804 STREAMNET (CIS/NED)	Pacific States Marine Fisheries Commission (PSMFC)	September
1988-108-04	1988-108-04 NW HYDROPOWER DATA BASE	Synergy Consulting, Inc.	December
1989-024-01	1989-024-01 EXP UMATILLA JUVENILE OUTMIGRATION M&E	Oregon Department Of Fish and Wildlife (ODFW)	September
1989-027-00	PI 198902700 SAND POINT OBLIGATION	Umatilla Electric Cooperative	September
1989-035-00	1989-035-00 EXP UMATILLA HATCHERY O&M	Oregon Department Of Fish and Wildlife (ODFW)	September
1989-062-01	200600600 EXP CBFWA HABITAT EVALUATION PROJECT	Columbia Basin Fish and Wildlife Authority (CBFWA)	September
1989-062-01	198906201 EXP FY06 NED WORKPLAN	Columbia Basin Fish and Wildlife Authority (CBFWA)	September
1989-096-00	1989-096-00 EXP GENETIC M & E PROGRAM FOR SUPPLEMENTED POPULAT	National Oceanic and Atmospheric Administration (NOAA)	October
1989-098-00	1989-098-00 PRE IDFG ISS	Idaho Department of Fish and Game	December
1989-107-00	1989-107-00 EXP STATISTICAL SUPPORT FOR SALMONID SURVIVAL STUDIES		November
1989-107-00	1989-107-00 EXP STATISTICAL SUPPORT FOR SALMONID SURVIVAL STUDIES		November
1990-005-00	1990-005-00 EXP UMATILLA HATCHERY M&E	Oregon Department Of Fish and Wildlife (ODFW)	October
1990-005-01	1990-005-01 PRE UMATILLA NATURAL PROD. M&E	Umatilla Confederated Tribes (CTUIR)	December
1990-018-00	1990-018-00 EXP RAINBOW TROUT HABITAT/PASSAGE IMPROVEMENT	Colville Confederated Tribes	September
1990-044-01	1990-044-01 LAKE CREEK LAND ENHANCEMENT	Coeur D'Alene Tribe	September
1990-055-00	1990-055-00 PRE SUPPLEMENTATION OF SUMMER STEELHEAD IN IDAHO	Idaho Department of Fish and Game	December
1990-092-00	1990-092-00 EXP WANAKET WILDLIFE AREA	Umatilla Confederated Tribes (CTUIR)	December
1991-019-01	199101901 PRE HUNGRY HORSE MITIGATION-FLATHEAD LAKE	Salish and Kootenai Confederated Tribes	September
1991-019-04	NP 1991-019-04 PRE HHR MITIGATION - CRESTON	US Fish and Wildlife Service (USFWS)	December
1991-046-00	1991-046-00 EXP SPOKANE TRIBAL HATCHERY	Spokane Tribe	December
1991-051-00	1991-051-00 EXP M & E STATISTICAL SUPPORT FOR LIFE-CYCLE STUDIES		December
1991-051-00	1991-051-00 EXP M & E STATISTICAL SUPPORT FOR LIFE-CYCLE STUDIES		December
1991-061-00	1991-061-00 EXP SWANSON LAKES WILDLIFE AREA O&M	Washington Department of Fish and Wildlife (WDFW)	September

1991-062-00	199106200 CAP SPOKANE TRIBE WL	Spokane Tribe	September
1991-071-00	1991-071-00 EXP SNAKE RIVER SOCKEYE SALMON HABITAT AND LIMNOLOGIC	Shoshone-Bannock Tribes	November
1992-026-01	PI 1992-026-01 END CRK/RICE FISH HABITAT AND WETLAND RESTORATION	Umatilla Confederated Tribes (CTUIR)	September
1992-026-01	1992-026-01 GRANDE RONDE BASIN ENGINEER	US Bureau of Reclamation (BOR)	September
1992-026-01	1992-026-01 GRAND RONDE MODEL WATERSHED PROGRAM	Union County	September
1992-026-01	1992-026-01 GRANDE RONDE MODEL WATERSHED PROGRAM ADMINISTRATION	Grande Ronde Model Watershed Foundation	September
1992-026-01	1992-026-01 PRE GRANDE RONDE MODEL WATERSHED PROGRAM ADMIN - EOU	Eastern Oregon State University	December
1992-040-00	1992-040-00 EXP SOCKEYE CAPTIVE BROOD REARING AND RESEARCH	National Oceanic and Atmospheric Administration (NOAA)	November
1992-048-00	1992-040-00 EXP HELLSGATE BIG GAME WINTER RANGE	Colville Confederated Tribes	December
1992-061-00	1992-061-00 PLANNING & DESIGN COEUR D' ALENE TRIBE ALBENI FALLS	Coeur D'Alene Tribe	September
1992-061-00	1992-061-00 IMPLEMENTATION COEUR D' ALENE TRIBE ALBENI FALLS	Coeur D'Alene Tribe	September
1992-068-00	1992-068-00 WILLAMETTE BASIN WILDLIFE MITIGATION	Oregon Department Of Fish and Wildlife (ODFW)	September
1993-029-00	199302900 EXP SURVIVAL ESTIMATES FOR THE PASSAGE OF JUVENILE SALM	National Oceanic and Atmospheric Administration (NOAA)	December
1993-040-00	PI 1993-040-00 15 MILE CR. HABITAT RESTORATION	Oregon Department Of Fish and Wildlife (ODFW)	September
1993-060-00	1993 060 00 SELECT AREA FISHERY EVALUATION	Clatsop County Economic Development Council	September
1993-060-00	199306000 EXP SELECT AREA FISHERIES EVALUATION - ODFW	Oregon Department Of Fish and Wildlife (ODFW)	September
1993-060-00	1993-060-00 EXP SELECT AREA FISHERIES EVALUATION	Washington Department of Fish and Wildlife (WDFW)	September
1993-066-00	199306600 CAP OREGON FISH SCREENS PROJECT	Oregon Department Of Fish and Wildlife (ODFW)	December
1994-018-05	1994-018-05 EXP ASOTIN MODEL WATERSHED PROGRAM	Asotin County Conservation District	September
1994-018-06	1994-018-06 EXP TUCANNON MODEL WATERSHED IMPLEMENTATION	Columbia County Soil and Water Conservation District (SWCD)	September
1994-018-06	1994-018-06 EXP TUCANNON MODEL WATERSHED IMPLEMENTATION	Columbia County Soil and Water Conservation District (SWCD)	September
1994-026-00	1994-026-00 EXP PACIFIC LAMPREY RESEARCH AND RESTORATION	Umatilla Confederated Tribes (CTUIR)	December
1994-042-00	199404200 EXP TROUT CREEK HABITAT RESTORATION	Oregon Department Of Fish and Wildlife (ODFW)	September
1994-044-00	1994-044-00 PL SAGEBRUSH FLATS WILDLIFE AREA	Washington Department of Fish and Wildlife (WDFW)	September
1994-050-00	PI 1994-050-00 PL SALMON RIVER HABITAT ENHANCEMENT	Shoshone-Bannock Tribes	September
1995-009-00	1995-009-00 LAKE ROOSEVELT NET PEN PROJECT	Lake Roosevelt Development Association	September
1995-011-00	1995-011-00 EXP CHIEF JOSEPH KOKANEE	Colville Confederated Tribes	September

	ENHANCEMENT PROJECT		
1995-015-00	1995-015-00 DUCK VALLEY RESERVOIRS FISH STOCKING AND O&M	Shoshone-Paiute Tribes	September
1995-028-00	1995-028-00 EXP MOSES LAKE FISH REHAB	Washington Department of Fish and Wildlife (WDFW)	September
1995-057-00	1995-057-00 SOUTHERN IDAHO WILDLIFE MITIGATION - ADMIN	Idaho Department of Fish and Game	September
1995-057-00	1995-057-00 SOUTHERN IDAHO WILDLIFE MITIGATION - DEER PARKS	Idaho Department of Fish and Game	September
1995-057-00	1995-057-00 RICE PROPERTY O&M	Idaho Department of Fish and Game	December
1995-063-25	199506325 EXP YKFP M&E - USFWS MARKING	US Fish and Wildlife Service (USFWS)	September
1996-011-00	1996-011-00 EXP O&M - GARDENA & GARDEN CITY/LOWDEN 2 FACILITIES	Gardena Farms Irrigation District #13	September
1996-011-00	199601100 EXP WALLA WALLA FISH PASSAGE M&E	US Department of Energy (DOE)	December
1996-011-00	199601100 EXP O&M LITTLE WALLA WALLA & NURSERY BRIDGE	Hudson Bay Irrigation District	December
1996-019-00	199601900 SECOND-TIER DATABASE AND WORLD WIDE WEB SUPPORT SERVICE	University of Washington	September
1996-020-00	PI 199602000 CSS COMMUNICATIONS SUPPORT	Columbia Basin Fish and Wildlife Authority (CBFWA)	November
1996-020-00	1996-020-00 EXP CSS PIT TAG SP/SU CHIN/HATCHERIES USFW COMPONENT	US Fish and Wildlife Service (USFWS)	November
1996-020-00	1996-020-00 EXP PSMFC CSS COMPONENT	Pacific States Marine Fisheries Commission (PSMFC)	November
1996-021-00	199602100 EXP GAS BUBBLE DISEASE RESEARCH AND MONITORING	US Geological Survey (USGS) - Cook	September
1996-035-01	YAKAMA RESERVATION WATERSHEDS PROJECT	Yakama Confederated Tribes	September
1996-040-00	PI 199604000 COHO RESTORATION MID-COLUMBIA	US Fish and Wildlife Service (USFWS)	December
1996-040-00	PROJECT IMPLEMENTATION	Crossing Borders Communications	December
1996-043-00	1996-043-00 JCAPE O & M	Nez Perce Tribe	December
1996-043-00	1996-043-00 JOHNSON CREEK ARTIFICIAL PROPAGATION ENHANCEMENT, M&E	Nez Perce Tribe	December
1996-067-00	1996-067-00 EXP MANCHESTER SPR. CHINOOK CAPTIVE BROODSTOCK	National Oceanic and Atmospheric Administration (NOAA)	November
1996-070-00	199607000 EXP MCKENZIE WATERSHED COUNCIL	Mckenzie Watershed Alliance	September
1996-070-00	199607000 EXP MCKENZIE WATERSHED COUNCIL	Mckenzie Watershed Alliance	September
1996-080-00	19968000 EXP NE OREGON WILDLIFE MITIGATION	Nez Perce Tribe	December
1996-094-01	1996-094-01 PL SCOTCH CREEK WILDLIFE AREA	Washington Department of Fish and Wildlife (WDFW)	September
1997-001-00	1997-001-00 EXP IDAHO CHINOOK CAPTIVE REARING	Idaho Department of Fish and Game	September
1997-011-00	1997-011-00 DUCK VALLEY INDIAN RESERVATION HABITAT ENHANCEMENT	Shoshone-Paiute Tribes	October

1997-015-01	1997-015-01 PRE IMNAHA R. SMOLT MONITORING - NPT	Nez Perce Tribe	December
1997-030-00	1997-030-00 CHINOOK SALMON ADULT ABUNDANCE MONITORING	Nez Perce Tribe	December
1997-038-00	1997 038 00 LISTED STOCK SALMONID GAMETE PRESERVATION	Nez Perce Tribe	December
1997-056-00	1997-056-00 EXP KLINKITAT RIVER WATERSHED ENHANCEMENT- YKFP	Yakama Confederated Tribes	October
1998-003-00	PI - 1998-003-00 WDLF MITIGATION - SPOKANE TRIBE	Spokane Tribe	September
1998-004-01	199800401 EXP COLUMBIA BASIN BULLETIN	Intermountain Communications	September
1998-007-02	1998-007-02 GRANDE RONDE SUPP'L - LOSTINE M & E	Nez Perce Tribe	December
1998-007-02	1998-007-02 GRANDE RONDE SUPPLEMENTATION - LOSTINE O & M	Nez Perce Tribe	December
1998-007-03	1998-007-03 EXP GRANDE RONDE SUPP'L M&E	Umatilla Confederated Tribes (CTUIR)	December
1998-007-03	1998-007-03 GRANDE RONDE SATELLITE FACILITIES O&M	Umatilla Confederated Tribes (CTUIR)	December
1998-007-04	1998-007-04 EXP GRANDE RONDE BASIN ENDEMIC SP CHINOOK SUPPL	Oregon Department Of Fish and Wildlife (ODFW)	December
1998-010-01	1998-010-01 EXP GRANDE RONDE BASIN SPRING CHINOOK SALMON CAPTIVE	Oregon Department Of Fish and Wildlife (ODFW)	September
1998-010-03	1998-010-03 EXP - SPAWNING DISTRIBUTION OF S.R. FALL CHIN SALMON	US Fish and Wildlife Service (USFWS)	November
1998-010-04	1998-010-04 M & E SNAKE RIVER YEARLING FALL CHINOOK SALMON	Nez Perce Tribe	December
1998-010-05	1998 010 05 PITTSBURG LANDING FALL CHINOOK	Nez Perce Tribe	December
1998-010-06	1998-010-06 CAPTIVE BROODSTOCK ARTIFICIAL PROPAGATION	Nez Perce Tribe	December
1998-016-00	1998-016-00 EXP ESCAPEMENT- PRODUCTIVITY JD SPRING CHINOOK	Oregon Department Of Fish and Wildlife (ODFW)	November
1998-017-00	199801700 EXP GRAVEL PUSH-UP DAM REMOVAL	Monument Soil and Water Conservation District (MSWCD)	December
1998-021-00	PI 1998-021-00 HOOD RIVER FISH HABITAT	Warm Springs Confederated Tribes	September
1998-022-00	1998-022-00 PINE CREEK RANCH O&M	Warm Springs Confederated Tribes	September
1998-028-00	1998-028-00 EXP TROUT CREEK WATERSHED IMPROVEMENT	Jefferson County Soil and Water Conservation District (SWCD)	September
1999-003-01	99-003-01 EXP USGS FALL CH/CHUM SPAWNING BELOW 4 LOWER DAMS	US Geological Survey (USGS) - Cook	September
1999-003-01	1999-003-01 EVAL. SPAWNING OF F. CHINOOK & CHUM BELOW 4 LOW DAMS	US Department of Energy (DOE)	September
1999-003-01	99-003-01 EXP USFWS FALL CH/CHUM SPAWNING BELOW 4 LOWER DAMS	US Fish and Wildlife Service (USFWS)	September
1999-003-01	99-003-01 EXP ODFW FALL CH/CHUM SPAWNING BELOW 4 LOWER DAMS	Oregon Department Of Fish and Wildlife (ODFW)	September
1999-003-01	99-003-01 EXP PSMFC FALL CH/CHUM SPAWNING BELOW 4 LOWER DAMS	Pacific States Marine Fisheries Commission (PSMFC)	September
1999-010-00	199901000 EXP PINE HOLLOW WATERSHED ENHANCEMENT	Sherman County Soil and Water Conservation District (SWCD)	September
1999-019-00	199901900 EXP RESTORE SALMON RIVER 12-	Custer County Soil and Water	September

	MILE REACH CHALLIS, ID	Conservation District (SWCD)	
1999-025-00	199902500 EXP SANDY RIVER DELTA HABITAT RESTORATION - FY06	US Forest Service (USFS) - Hood River	December
2000-001-00	2000-001-00 EXP OMAK CREEK ANADROMOUS FISH HABITAT & PASSAGE	Colville Confederated Tribes	November
2000-009-00	2002 009 00 LOGAN VALLEY WILDLIFE MITIGATION	Burns-Paiute Tribe	December
2000-012-00	PI 2000-012 EVALUATE FACTORS LIMITING COLUMBIA RIVER CHUM SALMON	US Fish and Wildlife Service (USFWS)	September
2000-019-00	2000-019-00 EXP TUCANNON R SPRING CHINOOK CAPTIVE BROOD	Washington Department of Fish and Wildlife (WDFW)	September
2000-021-00	199905600 EXP LADD MARSH	Oregon Department Of Fish and Wildlife (ODFW)	September
2000-026-00	2000-026-00 PL RAINWATER WILDLIFE AREA	Umatilla Confederated Tribes (CTUIR)	December
2000-027-00	200002700 EXP MALHEUR RIVER WILDLIFE MITIGATION	Burns-Paiute Tribe	December
2000-028-00	2000-028-00 EXP STATUS OF PACIFIC LAMPREY IN CLEARWATER RIVER	Idaho Department of Fish and Game	December
2000-033-00	2000-033-00 EXP WALLA WALLA FISH PASSAGE OPERATIONS	Umatilla Confederated Tribes (CTUIR)	December
2000-039-00	2000-039-00 EXP WALLA WALLA BASIN NATURAL PRODUCTION M&E	Umatilla Confederated Tribes (CTUIR)	December
2001-003-00	PI 2001-003-00 PL ADULT PIT DETECTION-PSMFC	Pacific States Marine Fisheries Commission (PSMFC)	September
2001-003-00	PI 2001-003-00 PL ADULT PIT DETECTION-NOAA OVRSITE	National Oceanic and Atmospheric Administration (NOAA)	September
2001-027-00	2001-027-00 EXP WESTERN POND TURTLE RECOVERY	Washington Department of Fish and Wildlife (WDFW)	September
2001-029-00	2001-029-00 EXP FORD HATCHERY O&M	Washington Department of Fish and Wildlife (WDFW)	September
2001-033-00	2001-033-00 EXP HANGMAN CREEK WILDLIFE RESTORATION	Coeur D'Alene Tribe	September
2001-041-01	2001-041-01 EXP FORREST CONSERVATION AREA	Warm Springs Confederated Tribes	November
2001-053-00	200105300 EXP DUNCAN CREEK CHUM	Pacific States Marine Fisheries Commission (PSMFC)	September
2002-002-00	2002-002-00 FEASIBILITY OF ENHANCING WHITE STURGEON SPAWNING	Kootenai Tribe	October
2002-003-00	PI 200200300 SECURE & RESTORE F&W HABITAT	Salish and Kootenai Confederated Tribes	December
2002-011-00	2002-011-00 KOOTENAI RIVER FLOODPLAIN ASSESSMENT	Kootenai Tribe	September
2002-013-01	PI 2002-013-01 EXP WATER ENTITY CBWTP	National Fish and Wildlife Foundation	September
2002-014-00	2002-014-00 EXP SUNNYSIDE WILDLIFE AREA	Washington Department of Fish and Wildlife (WDFW)	September
2002-025-01	2002-025-01 CAP YAKIMA TRIBUTARY ACCESS AND HABITAT 2	S Central Washington Resource Conservation and Development	September
2002-026-00	2002-026-00 EXP MORROW COUNTY RIPARIAN BUFFERS	Morrow County Soil and Water Conservation District (SWCD)	December
2002-030-00	2002-030-00 EXP PROGENY MARKER FOR SALMONIDS	Umatilla Confederated Tribes (CTUIR)	September



2002-037-00	2002-037-00 EXP FRESHWATER MUSSELS IN UMATILLA & JOHN DAY	Umatilla Confederated Tribes (CTUIR)	September
2002-050-00	2002-050-00 EXP ASOTIN CNTY RIPARIAN BUFFER/COUSE-TENMILE CREEKS	Asotin County Conservation District	September
2002-053-00	2002-053-00 ASSESS SALMONIDS IN ASOTIN CREEK WATERSHED	Washington Department of Fish and Wildlife (WDFW)	December
2002-054-00	2002 054 00 PROTECT & RESTORE ASOTIN CR WATERSHED	Nez Perce Tribe	October
2002-060-00	2002 060 00 NEZ PERCE HARVEST MONITORING	Nez Perce Tribe	November
2002-074-00	2002-074-00 RESTORE CROOKED FORK CR/COLT KILLED CR ANALYSIS AREA	Nez Perce Tribe	November
2003-001-00	PI 2003-001-00 MASASTASH CREEK PREDESIGN	Fishpro, Inc.	October
2003-009-00	2003-009-00 EXP CANADA SHELF SALMON SURVIVAL STUDY	Canada Department Of Fisheries and Oceans	September
2003-011-00	200301100 EXP IMPL HAB RESTOR FOR COL R/EST 06	Lower Columbia River Estuary Partnership (LCREP)	October
2003-012-00	2003-012-00 PROTECT SHILLAPOO WILDLIFE AREA	Washington Department of Fish and Wildlife (WDFW)	September
2003-013-00	PI 200301300 EXP GRAYS RIVER WATERSHED ASSESSMENT	Pacific States Marine Fisheries Commission (PSMFC)	December
2003-013-00	PI 200301300 EXP GRAYS RIVER WATERSED ASSESSMENT	US Department of Energy (DOE)	December
2003-017-00	200301700 EXP WENATCHEE RM&E PILOT - UNIV OF ALASKA, FAIRBANKS	University of Alaska Fairbanks	September
2003-017-00	2003 017 00 WENATCHEE R M & E PILOT	US Forest Service (USFS) - Wenatchee	September
2003-017-00	2003-017-00 EXP RM&E PILOT PROJECT - NOAA FISHERIES (PROJ MGT)	National Oceanic and Atmospheric Administration (NOAA)	September
2003-023-00	2003-023-00 CAP CHIEF JOSEPH HATCH PROG- PLAN AND PRE-DESIGN	Colville Confederated Tribes	September
2003-023-00	CHIEF JOE DAM HATCHERY EIS	D J Warren and Associates, Inc.	December
2003-036-00	200303600 EXP CBFWA MONITOR/EVALUATION PROJECT	Columbia Basin Fish and Wildlife Authority (CBFWA)	September
2003-038-00	2003-038-00 EXP EVAL RESTOR OF SNAKE R CHINOOK	US Department of Energy (DOE)	September
2003-041-00	200304100 EXP EVAL SALMON THRU SNAKE R DAMS	National Oceanic and Atmospheric Administration (NOAA)	September
2003-050-00	200305000 EXP EVAL REPROD OF STEELHEAD	University of Washington	November
2003-054-00	PI 200305400 REPRO OF STEELHEAD IN HOOD RIV	Oregon State University	September
2003-060-00	2003-060-00 EXP EVAL REPRO SUCCESS SNAKE RVR CHINOOK	Washington Department of Fish and Wildlife (WDFW)	December
2003-072-00	200307200 EXP BIODIVERSITY SYST FOR COLUMBIA	Northwest Habitat Institute	September
2003-114-00	200311400 PRE ACOUSTIC TRACKING FOR SURVIVAL AND MOVEMENT	Kintama Research	September
2004-002-00	200400200 EXP PNAMP FUNDING	US Geological Survey (USGS) - Cook	September
2005-002-00	200500200 - LOWER GRANITE DAM ADULT		September

	TRAP IMPROVEMENTS		
2005-002-00	200500200 EXP LWR GRANITE DAM ADULT TRAP OPERATION	National Oceanic and Atmospheric Administration (NOAA)	September
2006-001-00	2006-001-00 EXP MCINTYRE DAM FEASIBILITY STUDY	Colville Confederated Tribes	October
2006-003-00	2006-003-00 PL DESERT WILDLIFE AREA O&M	Washington Department of Fish and Wildlife (WDFW)	September
2006-004-00	2006-004-00 EXP WENAS WILDLIFE AREA O&M	Washington Department of Fish and Wildlife (WDFW)	September
2006-005-00	2006-005-00 EXP ASOTIN CREEK WILDLIFE AREA O&M	Washington Department of Fish and Wildlife (WDFW)	September



## Department of Energy

Bonneville Power Administration  
P.O. Box 3621  
Portland, Oregon 97208-3621

Environment, Fish and Wildlife

March 30, 2006

In reply refer to: KEW-4

Northwest Power and Conservation Council  
Ms. Rhonda Whiting, Chair  
Fish and Wildlife Committee  
851 S.W. Sixth Avenue, Suite 1100  
Portland, OR 97204-1348

Dear Ms. Whiting:

Bonneville Power Administration (BPA) has completed a preliminary review of project proposals that the Northwest Power and Conservation Council (Council), BPA, and Columbia Basin Fish and Wildlife Authority (CBFWA) staff identified as potentially having capital components. We are pleased to provide with this letter our initial capital/expense determinations (**Tables 1 and 2**). Of necessity, these tables are a preliminary work-product that reflect an evaluation of information currently available in the existing proposals; some uncertainties remain because of incomplete information. BPA will continue to refine its evaluations as more details about individual projects become available. We acknowledge the complexity inherent in BPA's capital policy, and remain committed to addressing those uncertainties and the issues that need to be resolved in order for BPA to make final capital and expense determinations.

As you know, BPA continues to have some reservations about identifying which project proposals could qualify for capital funds ahead of the actual selection of projects for implementation. This reservation is simply a matter of wanting to first address the priority of the projects relative to the most critical factors limiting the productivity and abundance of fish and wildlife, independent of potential funding category. We understand the Council's interest in knowing which projects can be capitalized as a precursor to developing the capital and expense components of the FY 07-09 planning budget, but also wish to reinforce our common interest of evaluating all proposals with the same rigor.

We are concerned that assigning proposals to funding sources at the outset of project review could lead to expectations about future funding recommendations for projects that can be capitalized, but that may provide fewer fish and wildlife benefits and are of lower value relative to other proposals under review. And as you are aware, we also need to ensure that we have fully considered the impact of operation and management expenses (O&M) associated with the choice of capital projects in the near-term, to avoid the potential of foreclosing the implementation of important habitat projects and other high-

priority Program initiatives in the out-years. Review and prioritization of proposals based on a common set of performance expectations and programmatic objectives will help ensure that the choices we make on project funding, whether capital or expense represent the best value for dollar spent in the long-term.

We examined the 37 proposals identified for further review to assist the Council's development of a planning budget for the Program. We found that 20 could potentially be capitalized. Our final determination is dependent on additional information that will become available through the proposal review and selection processes, and subsequent BPA contracting. To make a final capital determination, we must confirm that recommended projects meet the \$1 million threshold and other capital policy requirements.<sup>1</sup> As we work with the Council to finalize these capital and expense determinations, we are developing the appropriate documentation to explain how each project meets the capital criteria, and that can be applied uniformly to future consideration of capital expenditures. With this approach, we hope to make capital spending decisions more transparent, consistent, and predictable for Program participants in this and future years.

If you have any comments or questions about these issues, or BPA's preliminary capital determinations, please let me know.

Sincerely,



William C. Maslen  
Director of Fish and Wildlife

2 Enclosures

Table 1. Results of BPA's Initial Capital/Expense Review

Table 2. Results of BPA's Initial Capital/Expense Review

cc:

Mr. Doug Marker, Northwest Power and Conservation Council (electronic)  
Mr. Mark Fritsch, Northwest Power and Conservation Council (electronic)  
Ms. Patty O'Toole, Northwest Power and Conservation Council (electronic)  
Ms. Stacy Horton, Northwest Power and Conservation Council (electronic)  
Mr. Tony Grover, Northwest Power and Conservation Council (electronic)  
Mr. Kerry Berg, Northwest Power and Conservation Council (electronic)  
Mr. Karl Weist, Northwest Power and Conservation Council (electronic)  
Ms. Joann Hunt, Northwest Power and Conservation Council (electronic)  
Mr. Brian Lipscomb, Columbia Basin Fish and Wildlife Authority (electronic)  
Ms. Amy Langston, Columbia Basin Fish and Wildlife Authority (electronic)  
Mr. Tom Iverson, Columbia Basin Fish and Wildlife Authority (electronic)

<sup>1</sup> For more information, see BPA's capital policy at:

[http://www.efw.bpa.gov/Integrated\\_Fish\\_and\\_Wildlife\\_Program/FW%20Capitalization%20Policy%2011-4-04.pdf](http://www.efw.bpa.gov/Integrated_Fish_and_Wildlife_Program/FW%20Capitalization%20Policy%2011-4-04.pdf)

**Table 1. Results of BPA's Initial Capital/Expense Review: Capital Projects (subject to final review)**

Proposal Number	Title	Sponsor	Province	Subbasin	Type	Preliminary Capital Expense Category	Initial BPA (Finance) Capital/Expense Determination (Subject to final review)	Primary Uncertainty for Capitalization
198805301	Grande Ronde/Imnaha Endemic Spring Chinook Supplementation – Northeast Oregon Hatchery	Nez Perce Tribe	Blue Mountain	Grande Ronde	Anadromous	Both	Capitalize land acquisition and construction	
199004401	Lake Creek Land Acquisition	Coeur D'Alene Tribe	Intermountain	Coeur d'Alene	Wildlife	Both	Capitalize land acquisition	Land acquisition requirements <sup>b</sup>
199106200	Spokane Tribe Wildlife Mitigation	Spokane Tribe	Intermountain	Spokane	Wildlife	Both	Capitalize land acquisition	Land acquisition requirements <sup>b</sup>
199206100	Albeni Falls Wildlife Mitigation	Albeni Falls Interagency Work Group	Intermountain	Pend Oreille	Wildlife	Both	Capitalize land acquisition	Land acquisition requirements <sup>b</sup>
199206800	Willamette Basin Mitigation	Oregon Department of Fish & Wildlife (ODFW)	Lower Columbia	Willamette	Wildlife	Both	Capitalize land acquisition and permanent easements	Land acquisition requirements <sup>b</sup>
199505702	Southern Idaho Wildlife Mitigation	Shoshone-Bannock Tribes	Upper Snake	SNAKE Upper	Wildlife	Both	Capitalize land acquisition	Land acquisition requirements <sup>b</sup>
199505703	Southern Idaho Wildlife Mitigation	Shoshone Paiute Tribes	Middle Snake	Owyhee	Wildlife	Both	Capitalize land acquisition	Land acquisition requirements <sup>b</sup>
200200300	Secure & Restore Resident Fish Habitat	Salish & Kootenai Confederated Tribes	Mountain Columbia	Flathead	Resident	Both	Capitalize acquisition and permanent easement	Land acquisition requirements <sup>b</sup>
200300100	Manastash Crk Passage & Screening	Kittitas County Conservation District	Columbia Plateau	Yakima	Anadromous	Both	Capitalize construction (good functionally interdependent example)	Parts appear functionally interdependent <sup>a</sup>
200302300	Chief Joseph Hatchery Program	Colville Confederated Tribes	Columbia Cascade	Okanogan	Anadromous	Both	Capitalize land acquisition and construction	
200702700	Colville Confederated Tribes Acquisition Project	Colville Confederated Tribes	Intermountain	Columbia Upper	Wildlife	Both	Capitalize land acquisition - medium certainty	Land acquisition requirements <sup>b</sup>
200707000	Fish Passage Facility Final Design and Construction - Clear Lake Dam (NF Tieton R.).	Washington Department of Fish and Wildlife (WDFW)	Columbia Plateau	Yakima	Resident	Capital	Capitalize construction - (FS/BPA MOU)	Shared responsibility with USFS
200708400	Shrubsteppe Habitat Acquisition for Terrestrial Species in Need of Conservation in the Upper Mid-Columbia Subbasin.	Washington Department of Fish and Wildlife (WDFW)	Columbia Cascade	Columbia Upper Middle	Wildlife	Both	Capitalize land acquisition - medium certainty	Land acquisition requirements <sup>b</sup>

Draft document. For internal BPA use only.

Proposal Number	Title	Sponsor	Province	Subbasin	Type	Preliminary Capital Expense Category	Initial BPA (Finance) Capital/Expense Determination (Subject to final review)	Primary Uncertainty for Capitalization
200715300	Cardwell Hills Wildlife Mitigation and regional Biodiversity Protection Project	David Evans and Associates, Inc.	Lower Columbia	Willamette	Wildlife	Both	Capitalize land acquisition - medium certainty	Land acquisition requirements <sup>b</sup>
200721200	Develop a locally-adapted summer steelhead program to supplement natural production throughout the Okanogan River basin	Colville Confederated Tribes	Columbia Cascade	Okanogan	Anadromous	Both	Capitalize hatchery upgrade	\$1Million Threshold
200723200	Okanogan-Similkameen Habitat Protection Project - Fish and wildlife habitat protection through fee simple and conservation easement purchases.	Washington Department of Fish and Wildlife (WDFW)	Columbia Cascade	Okanogan	Wildlife	Both	Capitalize land acquisition	Functionally interdependent <sup>a</sup>
200726000	Acquisition of a Conservation Easement over 1084 acres of Upland Prairie and Oak Habitat, Willamette Subbasin	Nature Conservancy	Lower Columbia	Willamette	Wildlife	Both	Capitalize permanent easement	Land acquisition requirements <sup>b</sup>
200727100	Willamette Basin Capitalized Wildlife Land Acquisitions	The Confederated Tribes of Grand Ronde	Lower Columbia	Willamette	Wildlife	Both	Capitalize land acquisition	Land acquisition requirements <sup>b</sup>
200727600	Idaho Department of Fish and Game Rearing Expansion for Snake River Sockeye Salmon	Idaho Department of Fish & Game	Mountain Snake	Salmon	Anadromous	Both	Capitalize hatchery purchase and remodel	None
200731600	McKenzie Canyon Irrigation Project	Deschutes River Conservancy	Columbia Plateau	Deschutes	Anadromous	Both	Capitalize pipeline installation	None
<p>For more information, see BPA's capital policy at: <a href="http://www.efw.bpa.gov/Integrated_Fish_and_Wildlife_Program/FW%20Capitalization%20Policy%2011-4-04.pdf">http://www.efw.bpa.gov/Integrated_Fish_and_Wildlife_Program/FW%20Capitalization%20Policy%2011-4-04.pdf</a></p> <p><b>(a) Functional Interdependence</b> – Project (&gt;\$1million) can be capitalized if the components (&lt;\$1million each) are so closely connected that each could not function independently.</p> <p><b>(b) Land Acquisition Requirements</b> – Land purchases may be capitalized if the project meets several requirements related to the purpose and timing of the acquisition and the location and ownership of the land.</p>								

**Table 2. Results of BPA's Initial Capital/Expense Review: Expense Projects (subject to final review)**

Proposal Number	Title	Sponsor	Province	Subbasin	Type	Preliminary Capital Expense Category	Initial BPA (Finance) Capital/Expense Determination (Subject to final review)
199306600	Oregon Fish Screens Project	Oregon Department of Fish & Wildlife (ODFW)	Columbia Plateau	John Day	Anadromous	Capital	Expense - fish screens not functionally interdependent
199401500	Idaho Fish Screening and Passage Improvements	Idaho Department of Fish & Game	Mountain Snake	Salmon	Anadromous	Capital	Expense - fish screens not functionally interdependent
199601100	Walla Walla Juvenile and Adult Passage Improvements	Confederated Tribes of the Umatilla Indian Reservation	Columbia Plateau	Walla Walla	Anadromous	Both	Expense tentative - still under review at this time (functional interdependence issues)
199604000	Mid-Columbia Coho Restoration Project	Yakama Confederated Tribes	Columbia Cascade	Wenatchee	Anadromous	Both	Expense until completion of Step 3
199604200	Restore and Enhance Anadromous Fish Populations and Habitat in Salmon Creek	Colville Confederated Tribes	Columbia Cascade	Okanogan	Anadromous	Both	Expense - not > 15 year life
199801700	North Fork/Mid-John Day Fish Passage Improvement	Monument & Wheeler SWCDs	Columbia Plateau	John Day	Anadromous	Both	Expense - Not functionally interdependent
199801800	John Day Watershed Restoration	Confederated Tribes of Warm Springs Reservation of Oregon	Columbia Plateau	John Day	Anadromous	Capital	Expense - small independent projects not capital
199802100	Hood River Fish Habitat	Confederated Tribes of Warm Springs Reservation of Oregon	Columbia Gorge	Hood	Anadromous	Both	Expense - small independent projects not capital
199901900	Restore Salmon River (Challis, Idaho)	Custer County Soil & Water Conservation District (SWCD)	Mountain Snake	Salmon	Anadromous	Both	Expense -No anadromous fish crediting to meet requirements
200103300	Hangman Restoration Project	Coeur D'Alene Tribe	Intermountain	Spokane	Resident	Both	Expense -No resident fish crediting to meet requirements
200202501	Yakima Tributary Access & Habitat Program	South Central Washington Resource Conservation and Development	Columbia Plateau	Yakima	Anadromous	Both	Expense - small independent projects not capital
200204500	Coeur D'Alene Fish Habitat Acq	Coeur D'Alene Tribe	Intermountain	Coeur d'Alene	Resident	Both	Expense -No resident fish crediting to meet requirements
200600100	Mcintyre Dam Feasibility Study	Colville Confederated Tribes	Columbia Cascade	Okanogan	Anadromous	Both	Expense - Planning costs<\$1M, Construction costs could be capitalized if >\$1M
200705700	Potlatch River Basin Conservation Easement	Potlatch Corporation	Mountain Snake	Clearwater	Anadromous	Both	Expense -No anadromous fish crediting to meet requirements
200708500	UPA Nason Creek Oxbow Reconnection Project	Chelan County Natural Resources Department	Columbia Cascade	Wenatchee	Anadromous	Both	Expense - not construction

Draft document. For internal BPA use only.

Proposal Number	Title	Sponsor	Province	Subbasin	Type	Preliminary Capital Expense Category	Initial BPA (Finance) Capital/Expense Determination (Subject to final review)
200717000	South Fork Snake River Yellowstone cutthroat trout recruitment and survival improvement	Idaho Department of Fish & Game	Upper Snake	Snake Headwaters	Resident	Both	Expense - fish screens not functionally interdependent
200726800	Idaho Watershed Habitat Restoration Project via Custer Soil and Water Conservation District	Custer County Soil & Water Conservation District (SWCD)	Mountain Snake	Salmon	Anadromous	Both	Expense - small independent projects not capital

Draft document. For internal BPA use only.