

Tom Karier
Chair
Washington

Frank L. Cassidy Jr.
"Larry"
Washington

Jim Kempton
Idaho

Judi Danielson
Idaho



Joan M. Dukes
Vice-Chair
Oregon

Melinda S. Eden
Oregon

Bruce A. Measure
Montana

Rhonda Whiting
Montana

April 27, 2006

MEMORANDUM

TO: Fish and Wildlife Committee

FROM: Patty O'Toole

SUBJECT: Bonneville fish and wildlife contract transition - FY 07-09 - update

Over the last several months, staff has been working with Bonneville to provide a smooth contracting transition to the new set of F&W Program recommendations that are due from the Council in October. For a subset of ongoing projects this transition is a little challenging and requires some thoughtful decision guidelines. Staff asks that the Fish and Wildlife Committee support the following decision guidelines.

According to the current project selection schedule, project-funding recommendations for FY 2007-2009 are due in October of this year. Renewal dates for ongoing Bonneville contracts occur throughout the fiscal year. The contracting process typically includes a period of up to 90 days over which statements-of-work are developed and final contracts are negotiated. An October recommendation does not provide this time for ongoing projects whose contracts expire and must be renewed from October through December 2006.

Bonneville estimates that around 150 ongoing projects have contracts that will expire between October and December of 2006 and Bonneville has asked for an expedited decision on this group of proposals. Sponsors of some of these projects have expressed concern regarding the timeframe for decision and are worried about a gap in funding. This group of projects is in a large part made up of operation and maintenance projects that have been ongoing since before 1999. There are also ongoing captive brood-stock projects, artificial production projects, habitat restoration projects and monitoring and evaluation projects.

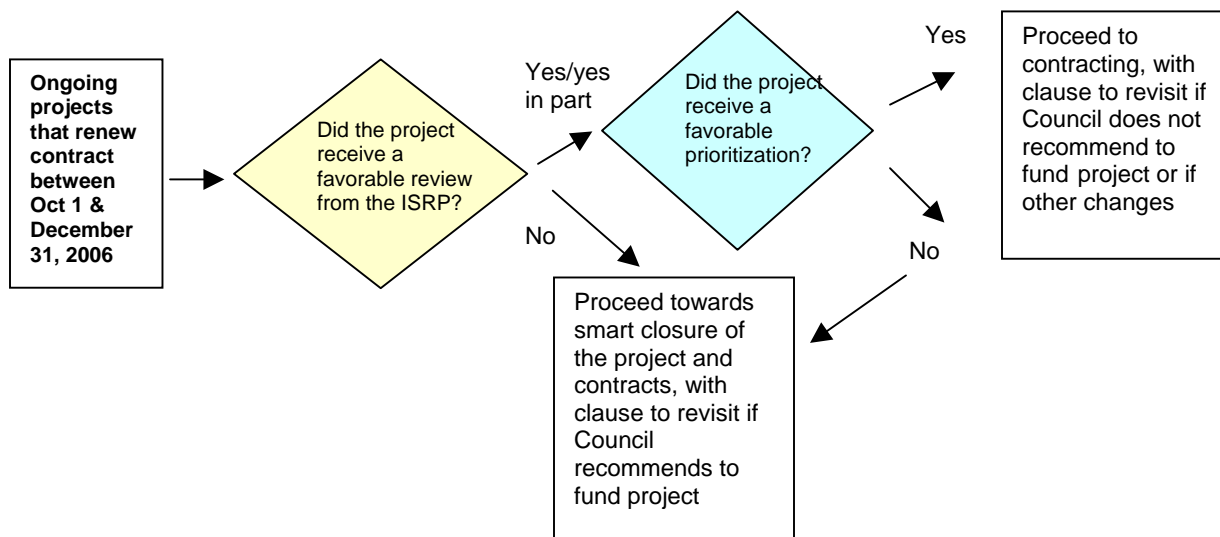
Instead of pursuing a formal expedited decision for these projects the staff proposes the Committee consider endorsing the following decision guidelines.

By early June the ISRP will release its preliminary report for all proposals. In mid-June we will have an idea of the priority proposals in the various provinces and in the mainstem/systemwide.

We propose that as a general rule, Bonneville wait to contract for ongoing projects until these two review elements are complete. We can then work with Bonneville on a case-by-case basis to determine if a project is likely to receive a renewed recommendation from the Council. We suggest that if an ongoing project receives a fund or fund in part recommendation from the ISRP and if the project is identified as a priority project in the province review, that Bonneville proceed with contracting at the project's FY 2006 budget level. Once the final recommendation is received from the Council Bonneville can easily modify the contract to match the final recommendation from the Council. We ask that Bonneville insert a clause into the contract so that if the Council does not end up recommending the project for FY 2007-2009, the project can be brought to conclusion.

If an ongoing project does not receive a favorable ISRP recommendation or is not identified as a priority in the province review, we propose that full contracting does not occur and that we work with Bonneville for aim the project at "smart closure" that is; winding a project down in a way that preserves existing investments (final report, et). Again, we propose that Bonneville remain flexible so that if such a project is recommended by the Council in the final recommendations, that the contract would be revisited and contracted consistent with the final Council recommendations. The following is a simple decision tree to guide contracting decisions.

Transition to new recommendations
Contracting and decision guidelines (draft 4/7/06)



Analysis:

The ISRP retrospective report indicates that historically, about 15 percent of ongoing projects have problems getting a fundable recommendation from the ISRP. If this pattern holds true, around 20 ongoing projects may not receive a fundable recommendation. Again, we propose to work with Bonneville to review this information, along with the province priorities to determine the likelihood of a favorable recommendation from the Council.

The timing of Council recommendations and Bonneville contracting has never been a perfect fit. This year is no exception. Staff will continue to work with Bonneville for a smooth transition from Council recommendations to project implementation.



Department of Energy

Bonneville Power Administration
P.O. Box 3621
Portland, Oregon 97208-3621

Environment, Fish and Wildlife

March 30, 2006

In reply refer to: KEW-4

Northwest Power and Conservation Council
Ms. Rhonda Whiting, Chair
Fish and Wildlife Committee
851 S.W. Sixth Avenue, Suite 1100
Portland, OR 97204-1348

Dear Ms. Whiting:

Enclosed to this letter is a spreadsheet of currently implemented ("ongoing") projects for which the continuity of Fish and Wildlife Program contracting is an issue this fall. As we indicated in our recent letter (March 3, 2006), it is critical that we manage the transition between budget periods for the contracts associated with these projects. Our goal is to provide uninterrupted implementation of projects that will continue into the '07-'09 period, promote an orderly close-out of those projects that will not, and minimize the cost of addressing this issue so as not to foreclose additional spending on new project starts. Therefore, we are returning to you for your advice and assistance in addressing this "transition period" issue.

As you are aware, there are 151 projects (190 contracts) for which the current solicitation process schedule raises funding continuity concerns. (See enclosed list.) While some of these projects may not be high priorities relative to new proposals, other projects must continue without interruption to achieve their high priority biological objectives. During the regional solicitation workshops, Bonneville Power Administration (BPA) and the Northwest Power and Conservation Council (Council) staff committed to resolving this transition issue. BPA subsequently provided the Council with information on possible transition tools including short-term contracts (e.g., bridge funding all expiring contracts for 3 months) and a sequenced decision (e.g., a final decision to close-out or continue transition period projects by June 30).¹

We understand the Council interest in evaluating new and ongoing project proposals on a common basis, in order to promote the appearance of fairness in the solicitation process. While we acknowledge the desirability of simultaneous review and selection that does not differentiate new from ongoing proposals, an early decision for some projects does not bias the process in favor of ongoing project proposals any more than spending money

¹See: BPA, Environment, Fish and Wildlife, *Interim Options for Contracts that Expire September 30 through December 31, 2006*, January 17, 2006. This document was provided to the Council at the January, 2006 Council meeting.

on them would in the near-term without a review. We believe it is also important to weigh the value of a complete package of simultaneous project funding recommendations in the fall, against business management considerations that include the increased costs of bridge funding to accommodate an October decision. For example, short-term contracts that merely defer decision-making are inherently inefficient. They can send the wrong implementation signals and add significant labor costs. In particular, contracting must be undertaken twice for each project that ultimately continues; for those that do not continue, newly initiated work must be terminated, and close-out costs renegotiated.

The impacts are predictable. Contracting costs paid to BPA Supply Chain services alone would increase by an estimated \$200,000. In addition, bridge funding would increase the workload required of BPA's Fish and Wildlife division staff. While not a *per se* increase in fixed costs, unnecessarily redundant administrative processes will strain BPA's contracting resources at a particularly inopportune time this fall, following a Council decision. The repetitive demands of short-term contracts also divert the time and attention of our contract implementation partners otherwise spent on project tasks to the process of contracting. All of these impacts add real "costs" that potentially delay the prompt initiation of contracting for newly recommended and other ongoing projects, and compromises efficient, effective Program implementation.

In addition to transaction costs and staff impacts, short-term contracts would fund all projects irrespective of their evaluation in the current solicitation, and their priority for the '07-'09 implementation period, relative to other spending alternatives. Overall, bridge funding these projects through January would "occupy" approximately \$13 million of the available FY 07 budget. The actual additional cost of bridge funding would depend on the number of projects that were ultimately closed out. For illustration purposes, if half of the projects that were not listed as "base" (in the joint CBFWA-Council-BPA staff assessment and *Program Appraisal*) were subsequently closed-out following an October Council recommendation, bridge funding would have reduced the Program budget for FY07 by approximately \$3.9 million. By comparison, a sequenced decision would not require duplicative contracting activities, and would conserve available Program dollars for those high priority projects identified and recommended by the Council through the FY07-09 solicitation process.

We also believe that there will be sufficient information (e.g., ISRP preliminary review, province reviews, and a mainstem/system-wide review) for the Council and BPA to make an informed judgment about funding on an accelerated basis. After further considering the options, we have concluded that a sequenced decision, informed by these ongoing reviews where possible, is the most responsible path forward because it maximizes the available FY2007 budget and does not waste limited resources by asking Program contractors and BPA project, contract, and financial management staff to contract twice for the same project.

While we recognize that a sequenced decision will accelerate Council and BPA evaluations that would otherwise occur in the summer, we are committed to moving forward with this approach. We hope that you will agree and support this approach to

make the best use of Program dollars, and invite you to recommend transition-period projects for continuation or close-out by June 16, 2006. BPA implementation funding decisions must be made no later than June 30, 2006, in order for contracts to be in place by October 1st. Just as we jointly reassured the region in the initial Council Provincial Review Workshops that we would address this issue, we look forward to working closely with you to review and prioritize these projects to meet this objective, consistent with the solicitation process, over the next few months.

Sincerely,



William C. Maslen
Director of Fish and Wildlife

1 Enclosure:

Contracts that Expire September 31 through December 31, 2006

cc:

Mr. Doug Marker, Northwest Power and Conservation Council (electronic)
Mr. Mark Fritsch, Northwest Power and Conservation Council (electronic)
Ms. Patty O'Toole, Northwest Power and Conservation Council (electronic)
Ms. Stacy Horton, Northwest Power and Conservation Council (electronic)
Mr. Tony Grover, Northwest Power and Conservation Council (electronic)
Mr. Kerry Berg, Northwest Power and Conservation Council (electronic)
Mr. Karl Weist, Northwest Power and Conservation Council (electronic)
Mr. Larry Cassidy Jr., Northwest Power and Conservation Council (electronic)
Ms. Judi Danielson, Northwest Power and Conservation Council (electronic)
Ms. Melinda Eden, Northwest Power and Conservation Council (electronic)
Ms. Joann Hunt, Northwest Power and Conservation Council (electronic)
Mr. Brian Lipscomb, Columbia Basin Fish and Wildlife Authority (electronic)
Ms. Amy Langston, Columbia Basin Fish and Wildlife Authority (electronic)
Mr. Tom Iverson, Columbia Basin Fish and Wildlife Authority (electronic)

INTENTIONALLY LEFT BLANK

Table 1. Contracts that Expire September 31 through December 31, 2006

Project #	Contract Title	Contractor Name	End Mo 2006
1982-013-01	1982-013-01 EXP CODED WR TAG - PSMFC	Pacific States Marine Fisheries Commission (PSMFC)	December
1982-013-02	1982-013-02 EXP CODED WIRE TAG - ODFW	Oregon Department Of Fish and Wildlife (ODFW)	December
1982-013-03	1982-013-03 EXP CODED WIRE TAG - USFWS	US Fish and Wildlife Service (USFWS)	December
1982-013-04	1982-013-04 EXP CODED WIRE TAG - WDFW	Washington Department of Fish and Wildlife (WDFW)	December
1983-319-00	PI 1983-319-00 NEW MARKING AND MONITORING TECHNIQUES-B2CC	National Oceanic and Atmospheric Administration (NOAA)	September
1983-319-00	PI 1983-319-00 PL NEW MARKING AND MONITORING TECHNIQUES-NON B2CC	National Oceanic and Atmospheric Administration (NOAA)	September
1983-319-00	PI 1983-319-00 NEW MARKING AND MONITORING-B2CC-DIGITAL ANGEL	Digital Angel Corporation	September
1983-350-00	1983-350-0 NEZ PERCE TRIBAL HATCHERY - O & M	Nez Perce Tribe	December
1983-350-00	1983-350-00 NEZ PERCE HATCHERY O & M	Nez Perce Tribe	December
1983-350-03	1983-350-03 NEZ PERCE TRIBAL HATCHERY M&E	Nez Perce Tribe	December
1983-435-00	1983-435-00 EXP LITTLE WHITE SALMON HATCHERY/SPRING CHINOOK	US Fish and Wildlife Service (USFWS)	December
1983-435-00	1983-435-00 PRE-AWARD EXP UMATILLA HATCHERY SATELLITE FACIL O&M	Umatilla Confederated Tribes (CTUIR)	December
1983-436-00	1983-436-00 EXP UMATILLA PASSAGE O&M	Westland Irrigation District	September
1985-038-00	1985-038-00 EXP COLVILLE TRIBAL HATCHERY O&M/M&E	Colville Confederated Tribes	September
1986-050-00	1986-050-00 EXP LOWER COLUMBIA WHITE STURGEON PROJECT	Oregon Department Of Fish and Wildlife (ODFW)	September
1987-100-02	1987-100-02 EXP UMATILLA RIVER SUBBASIN FISH HABITAT IMPROVEMENT	Oregon Department Of Fish and Wildlife (ODFW)	September
1987-127-00	1987-127-00 EXP SMOLT MONITORING FEDERAL - USFWS	US Fish and Wildlife Service (USFWS)	December
1988-022-00	1988-022-00 PRE UMATILLA FISH PASSAGE OPS.	Umatilla Confederated Tribes (CTUIR)	December
1988-053-01	1988-053-01 PRE GRANDE RONDE SPRING CHINOOK STEP 3 SUPPORT	Nez Perce Tribe	December
1988-053-03	1988-053-03 EXP CTWS HOOD RIVER M&E	Warm Springs Confederated Tribes	September
1988-053-04	1988-053-04 EXP ODFW M&E HOOD RIVER	Oregon Department Of Fish and Wildlife (ODFW)	September
1988-053-05	1988-053-05 CAP NE OREGON OUTPLANTING FACILITIES	Oregon Department Of Fish and Wildlife (ODFW)	December
1988-053-05	1988-053-05 CAP NE OREGON OUTPLANTING FACILITIES	Oregon Department Of Fish and Wildlife (ODFW)	December
1988-053-07	1988-053-07 EXP PARKDALE CTWS - HOOD	Warm Springs Confederated	September

	RIVER PROD PROG	Tribes	
1988-053-08	198805308 EXP POWERDALE ODFW - HOOD RIVER PRODUCTION	Oregon Department Of Fish and Wildlife (ODFW)	September
1988-053-08	1988-053-08 EXP OAK SPRINGS ODFW HOOD RIVER PRODUCTION	Oregon Department Of Fish and Wildlife (ODFW)	September
1988-053-15	198805315 RFP EXP HRPP EXPANSION		December
1988-064-00	1988-064-00 KOOTENAI HATCHERY PROJECT IMPLEMENTATION	Kootenai Tribe	November
1988-108-04	PI 198810804 STREAMNET (CIS/NED)	Pacific States Marine Fisheries Commission (PSMFC)	September
1988-108-04	1988-108-04 NW HYDROPOWER DATA BASE	Synergy Consulting, Inc.	December
1989-024-01	1989-024-01 EXP UMATILLA JUVENILE OUTMIGRATION M&E	Oregon Department Of Fish and Wildlife (ODFW)	September
1989-027-00	PI 198902700 SAND POINT OBLIGATION	Umatilla Electric Cooperative	September
1989-035-00	1989-035-00 EXP UMATILLA HATCHERY O&M	Oregon Department Of Fish and Wildlife (ODFW)	September
1989-062-01	200600600 EXP CBFWA HABITAT EVALUATION PROJECT	Columbia Basin Fish and Wildlife Authority (CBFWA)	September
1989-062-01	198906201 EXP FY06 NED WORKPLAN	Columbia Basin Fish and Wildlife Authority (CBFWA)	September
1989-096-00	1989-096-00 EXP GENETIC M & E PROGRAM FOR SUPPLEMENTED POPULAT	National Oceanic and Atmospheric Administration (NOAA)	October
1989-098-00	1989-098-00 PRE IDFG ISS	Idaho Department of Fish and Game	December
1989-107-00	1989-107-00 EXP STATISTICAL SUPPORT FOR SALMONID SURVIVAL STUDIES		November
1989-107-00	1989-107-00 EXP STATISTICAL SUPPORT FOR SALMONID SURVIVAL STUDIES		November
1990-005-00	1990-005-00 EXP UMATILLA HATCHERY M&E	Oregon Department Of Fish and Wildlife (ODFW)	October
1990-005-01	1990-005-01 PRE UMATILLA NATURAL PROD. M&E	Umatilla Confederated Tribes (CTUIR)	December
1990-018-00	1990-018-00 EXP RAINBOW TROUT HABITAT/PASSAGE IMPROVEMENT	Colville Confederated Tribes	September
1990-044-01	1990-044-01 LAKE CREEK LAND ENHANCEMENT	Coeur D'Alene Tribe	September
1990-055-00	1990-055-00 PRE SUPPLEMENTATION OF SUMMER STEELHEAD IN IDAHO	Idaho Department of Fish and Game	December
1990-092-00	1990-092-00 EXP WANAKET WILDLIFE AREA	Umatilla Confederated Tribes (CTUIR)	December
1991-019-01	199101901 PRE HUNGRY HORSE MITIGATION-FLATHEAD LAKE	Salish and Kootenai Confederated Tribes	September
1991-019-04	NP 1991-019-04 PRE HHR MITIGATION - CRESTON	US Fish and Wildlife Service (USFWS)	December
1991-046-00	1991-046-00 EXP SPOKANE TRIBAL HATCHERY	Spokane Tribe	December
1991-051-00	1991-051-00 EXP M & E STATISTICAL SUPPORT FOR LIFE-CYCLE STUDIES		December
1991-051-00	1991-051-00 EXP M & E STATISTICAL SUPPORT FOR LIFE-CYCLE STUDIES		December
1991-061-00	1991-061-00 EXP SWANSON LAKES WILDLIFE AREA O&M	Washington Department of Fish and Wildlife (WDFW)	September

1991-062-00	199106200 CAP SPOKANE TRIBE WL	Spokane Tribe	September
1991-071-00	1991-071-00 EXP SNAKE RIVER SOCKEYE SALMON HABITAT AND LIMNOLOGIC	Shoshone-Bannock Tribes	November
1992-026-01	PI 1992-026-01 END CRK/RICE FISH HABITAT AND WETLAND RESTORATION	Umatilla Confederated Tribes (CTUIR)	September
1992-026-01	1992-026-01 GRANDE RONDE BASIN ENGINEER	US Bureau of Reclamation (BOR)	September
1992-026-01	1992-026-01 GRAND RONDE MODEL WATERSHED PROGRAM	Union County	September
1992-026-01	1992-026-01 GRANDE RONDE MODEL WATERSHED PROGRAM ADMINISTRATION	Grande Ronde Model Watershed Foundation	September
1992-026-01	1992-026-01 PRE GRANDE RONDE MODEL WATERSHED PROGRAM ADMIN - EOU	Eastern Oregon State University	December
1992-040-00	1992-040-00 EXP SOCKEYE CAPTIVE BROOD REARING AND RESEARCH	National Oceanic and Atmospheric Administration (NOAA)	November
1992-048-00	1992-040-00 EXP HELLSGATE BIG GAME WINTER RANGE	Colville Confederated Tribes	December
1992-061-00	1992-061-00 PLANNING & DESIGN COEUR D' ALENE TRIBE ALBENI FALLS	Coeur D'Alene Tribe	September
1992-061-00	1992-061-00 IMPLEMENTATION COEUR D' ALENE TRIBE ALBENI FALLS	Coeur D'Alene Tribe	September
1992-068-00	1992-068-00 WILLAMETTE BASIN WILDLIFE MITIGATION	Oregon Department Of Fish and Wildlife (ODFW)	September
1993-029-00	199302900 EXP SURVIVAL ESTIMATES FOR THE PASSAGE OF JUVENILE SALM	National Oceanic and Atmospheric Administration (NOAA)	December
1993-040-00	PI 1993-040-00 15 MILE CR. HABITAT RESTORATION	Oregon Department Of Fish and Wildlife (ODFW)	September
1993-060-00	1993 060 00 SELECT AREA FISHERY EVALUATION	Clatsop County Economic Development Council	September
1993-060-00	199306000 EXP SELECT AREA FISHERIES EVALUATION - ODFW	Oregon Department Of Fish and Wildlife (ODFW)	September
1993-060-00	1993-060-00 EXP SELECT AREA FISHERIES EVALUATION	Washington Department of Fish and Wildlife (WDFW)	September
1993-066-00	199306600 CAP OREGON FISH SCREENS PROJECT	Oregon Department Of Fish and Wildlife (ODFW)	December
1994-018-05	1994-018-05 EXP ASOTIN MODEL WATERSHED PROGRAM	Asotin County Conservation District	September
1994-018-06	1994-018-06 EXP TUCANNON MODEL WATERSHED IMPLEMENTATION	Columbia County Soil and Water Conservation District (SWCD)	September
1994-018-06	1994-018-06 EXP TUCANNON MODEL WATERSHED IMPLEMENTATION	Columbia County Soil and Water Conservation District (SWCD)	September
1994-026-00	1994-026-00 EXP PACIFIC LAMPREY RESEARCH AND RESTORATION	Umatilla Confederated Tribes (CTUIR)	December
1994-042-00	199404200 EXP TROUT CREEK HABITAT RESTORATION	Oregon Department Of Fish and Wildlife (ODFW)	September
1994-044-00	1994-044-00 PL SAGEBRUSH FLATS WILDLIFE AREA	Washington Department of Fish and Wildlife (WDFW)	September
1994-050-00	PI 1994-050-00 PL SALMON RIVER HABITAT ENHANCEMENT	Shoshone-Bannock Tribes	September
1995-009-00	1995-009-00 LAKE ROOSEVELT NET PEN PROJECT	Lake Roosevelt Development Association	September
1995-011-00	1995-011-00 EXP CHIEF JOSEPH KOKANEE	Colville Confederated Tribes	September

	ENHANCEMENT PROJECT		
1995-015-00	1995-015-00 DUCK VALLEY RESERVOIRS FISH STOCKING AND O&M	Shoshone-Paiute Tribes	September
1995-028-00	1995-028-00 EXP MOSES LAKE FISH REHAB	Washington Department of Fish and Wildlife (WDFW)	September
1995-057-00	1995-057-00 SOUTHERN IDAHO WILDLIFE MITIGATION - ADMIN	Idaho Department of Fish and Game	September
1995-057-00	1995-057-00 SOUTHERN IDAHO WILDLIFE MITIGATION - DEER PARKS	Idaho Department of Fish and Game	September
1995-057-00	1995-057-00 RICE PROPERTY O&M	Idaho Department of Fish and Game	December
1995-063-25	199506325 EXP YKFP M&E - USFWS MARKING	US Fish and Wildlife Service (USFWS)	September
1996-011-00	1996-011-00 EXP O&M - GARDENA & GARDEN CITY/LOWDEN 2 FACILITIES	Gardena Farms Irrigation District #13	September
1996-011-00	199601100 EXP WALLA WALLA FISH PASSAGE M&E	US Department of Energy (DOE)	December
1996-011-00	199601100 EXP O&M LITTLE WALLA WALLA & NURSERY BRIDGE	Hudson Bay Irrigation District	December
1996-019-00	199601900 SECOND-TIER DATABASE AND WORLD WIDE WEB SUPPORT SERVICE	University of Washington	September
1996-020-00	PI 199602000 CSS COMMUNICATIONS SUPPORT	Columbia Basin Fish and Wildlife Authority (CBFWA)	November
1996-020-00	1996-020-00 EXP CSS PIT TAG SP/SU CHIN/HATCHERIES USFW COMPONENT	US Fish and Wildlife Service (USFWS)	November
1996-020-00	1996-020-00 EXP PSMFC CSS COMPONENT	Pacific States Marine Fisheries Commission (PSMFC)	November
1996-021-00	199602100 EXP GAS BUBBLE DISEASE RESEARCH AND MONITORING	US Geological Survey (USGS) - Cook	September
1996-035-01	YAKAMA RESERVATION WATERSHEDS PROJECT	Yakama Confederated Tribes	September
1996-040-00	PI 199604000 COHO RESTORATION MID-COLUMBIA	US Fish and Wildlife Service (USFWS)	December
1996-040-00	PROJECT IMPLEMENTATION	Crossing Borders Communications	December
1996-043-00	1996-043-00 JCAPE O & M	Nez Perce Tribe	December
1996-043-00	1996-043-00 JOHNSON CREEK ARTIFICIAL PROPAGATION ENHANCEMENT, M&E	Nez Perce Tribe	December
1996-067-00	1996-067-00 EXP MANCHESTER SPR. CHINOOK CAPTIVE BROODSTOCK	National Oceanic and Atmospheric Administration (NOAA)	November
1996-070-00	199607000 EXP MCKENZIE WATERSHED COUNCIL	Mckenzie Watershed Alliance	September
1996-070-00	199607000 EXP MCKENZIE WATERSHED COUNCIL	Mckenzie Watershed Alliance	September
1996-080-00	19968000 EXP NE OREGON WILDLIFE MITIGATION	Nez Perce Tribe	December
1996-094-01	1996-094-01 PL SCOTCH CREEK WILDLIFE AREA	Washington Department of Fish and Wildlife (WDFW)	September
1997-001-00	1997-001-00 EXP IDAHO CHINOOK CAPTIVE REARING	Idaho Department of Fish and Game	September
1997-011-00	1997-011-00 DUCK VALLEY INDIAN RESERVATION HABITAT ENHANCEMENT	Shoshone-Paiute Tribes	October

1997-015-01	1997-015-01 PRE IMNAHA R. SMOLT MONITORING - NPT	Nez Perce Tribe	December
1997-030-00	1997-030-00 CHINOOK SALMON ADULT ABUNDANCE MONITORING	Nez Perce Tribe	December
1997-038-00	1997 038 00 LISTED STOCK SALMONID GAMETE PRESERVATION	Nez Perce Tribe	December
1997-056-00	1997-056-00 EXP KLINKITAT RIVER WATERSHED ENHANCEMENT- YKFP	Yakama Confederated Tribes	October
1998-003-00	PI - 1998-003-00 WDLF MITIGATION - SPOKANE TRIBE	Spokane Tribe	September
1998-004-01	199800401 EXP COLUMBIA BASIN BULLETIN	Intermountain Communications	September
1998-007-02	1998-007-02 GRANDE RONDE SUPPL - LOSTINE M & E	Nez Perce Tribe	December
1998-007-02	1998-007-02 GRANDE RONDE SUPPLEMENTATION - LOSTINE O & M	Nez Perce Tribe	December
1998-007-03	1998-007-03 EXP GRANDE RONDE SUPPL M&E	Umatilla Confederated Tribes (CTUIR)	December
1998-007-03	1998-007-03 GRANDE RONDE SATELLITE FACILITIES O&M	Umatilla Confederated Tribes (CTUIR)	December
1998-007-04	1998-007-04 EXP GRANDE RONDE BASIN ENDEMIC SP CHINOOK SUPPL	Oregon Department Of Fish and Wildlife (ODFW)	December
1998-010-01	1998-010-01 EXP GRANDE RONDE BASIN SPRING CHINOOK SALMON CAPTIVE	Oregon Department Of Fish and Wildlife (ODFW)	September
1998-010-03	1998-010-03 EXP - SPAWNING DISTRIBUTION OF S.R. FALL CHIN SALMON	US Fish and Wildlife Service (USFWS)	November
1998-010-04	1998-010-04 M & E SNAKE RIVER YEARLING FALL CHINOOK SALMON	Nez Perce Tribe	December
1998-010-05	1998 010 05 PITTSBURG LANDING FALL CHINOOK	Nez Perce Tribe	December
1998-010-06	1998-010-06 CAPTIVE BROODSTOCK ARTIFICIAL PROPAGATION	Nez Perce Tribe	December
1998-016-00	1998-016-00 EXP ESCAPEMENT- PRODUCTIVITY JD SPRING CHINOOK	Oregon Department Of Fish and Wildlife (ODFW)	November
1998-017-00	199801700 EXP GRAVEL PUSH-UP DAM REMOVAL	Monument Soil and Water Conservation District (MSWCD)	December
1998-021-00	PI 1998-021-00 HOOD RIVER FISH HABITAT	Warm Springs Confederated Tribes	September
1998-022-00	1998-022-00 PINE CREEK RANCH O&M	Warm Springs Confederated Tribes	September
1998-028-00	1998-028-00 EXP TROUT CREEK WATERSHED IMPROVEMENT	Jefferson County Soil and Water Conservation District (SWCD)	September
1999-003-01	99-003-01 EXP USGS FALL CH/CHUM SPAWNING BELOW 4 LOWER DAMS	US Geological Survey (USGS) - Cook	September
1999-003-01	1999-003-01 EVAL. SPAWNING OF F. CHINOOK & CHUM BELOW 4 LOW DAMS	US Department of Energy (DOE)	September
1999-003-01	99-003-01 EXP USFWS FALL CH/CHUM SPAWNING BELOW 4 LOWER DAMS	US Fish and Wildlife Service (USFWS)	September
1999-003-01	99-003-01 EXP ODFW FALL CH/CHUM SPAWNING BELOW 4 LOWER DAMS	Oregon Department Of Fish and Wildlife (ODFW)	September
1999-003-01	99-003-01 EXP PSMFC FALL CH/CHUM SPAWNING BELOW 4 LOWER DAMS	Pacific States Marine Fisheries Commission (PSMFC)	September
1999-010-00	199901000 EXP PINE HOLLOW WATERSHED ENHANCEMENT	Sherman County Soil and Water Conservation District (SWCD)	September
1999-019-00	199901900 EXP RESTORE SALMON RIVER 12-	Custer County Soil and Water	September

	MILE REACH CHALLIS, ID	Conservation District (SWCD)	
1999-025-00	199902500 EXP SANDY RIVER DELTA HABITAT RESTORATION - FY06	US Forest Service (USFS) - Hood River	December
2000-001-00	2000-001-00 EXP OMAK CREEK ANADROMOUS FISH HABITAT & PASSAGE	Colville Confederated Tribes	November
2000-009-00	2002 009 00 LOGAN VALLEY WILDLIFE MITIGATION	Burns-Paiute Tribe	December
2000-012-00	PI 2000-012 EVALUATE FACTORS LIMITING COLUMBIA RIVER CHUM SALMON	US Fish and Wildlife Service (USFWS)	September
2000-019-00	2000-019-00 EXP TUCANNON R SPRING CHINOOK CAPTIVE BROOD	Washington Department of Fish and Wildlife (WDFW)	September
2000-021-00	199905600 EXP LADD MARSH	Oregon Department Of Fish and Wildlife (ODFW)	September
2000-026-00	2000-026-00 PL RAINWATER WILDLIFE AREA	Umatilla Confederated Tribes (CTUIR)	December
2000-027-00	200002700 EXP MALHEUR RIVER WILDLIFE MITIGATION	Burns-Paiute Tribe	December
2000-028-00	2000-028-00 EXP STATUS OF PACIFIC LAMPREY IN CLEARWATER RIVER	Idaho Department of Fish and Game	December
2000-033-00	2000-033-00 EXP WALLA WALLA FISH PASSAGE OPERATIONS	Umatilla Confederated Tribes (CTUIR)	December
2000-039-00	2000-039-00 EXP WALLA WALLA BASIN NATURAL PRODUCTION M&E	Umatilla Confederated Tribes (CTUIR)	December
2001-003-00	PI 2001-003-00 PL ADULT PIT DETECTION-PSMFC	Pacific States Marine Fisheries Commission (PSMFC)	September
2001-003-00	PI 2001-003-00 PL ADULT PIT DETECTION-NOAA OVRSITE	National Oceanic and Atmospheric Administration (NOAA)	September
2001-027-00	2001-027-00 EXP WESTERN POND TURTLE RECOVERY	Washington Department of Fish and Wildlife (WDFW)	September
2001-029-00	2001-029-00 EXP FORD HATCHERY O&M	Washington Department of Fish and Wildlife (WDFW)	September
2001-033-00	2001-033-00 EXP HANGMAN CREEK WILDLIFE RESTORATION	Coeur D'Alene Tribe	September
2001-041-01	2001-041-01 EXP FORREST CONSERVATION AREA	Warm Springs Confederated Tribes	November
2001-053-00	200105300 EXP DUNCAN CREEK CHUM	Pacific States Marine Fisheries Commission (PSMFC)	September
2002-002-00	2002-002-00 FEASIBILITY OF ENHANCING WHITE STURGEON SPAWNING	Kootenai Tribe	October
2002-003-00	PI 200200300 SECURE & RESTORE F&W HABITAT	Salish and Kootenai Confederated Tribes	December
2002-011-00	2002-011-00 KOOTENAI RIVER FLOODPLAIN ASSESSMENT	Kootenai Tribe	September
2002-013-01	PI 2002-013-01 EXP WATER ENTITY CBWTP	National Fish and Wildlife Foundation	September
2002-014-00	2002-014-00 EXP SUNNYSIDE WILDLIFE AREA	Washington Department of Fish and Wildlife (WDFW)	September
2002-025-01	2002-025-01 CAP YAKIMA TRIBUTARY ACCESS AND HABITAT 2	S Central Washington Resource Conservation and Development	September
2002-026-00	2002-026-00 EXP MORROW COUNTY RIPARIAN BUFFERS	Morrow County Soil and Water Conservation District (SWCD)	December
2002-030-00	2002-030-00 EXP PROGENY MARKER FOR SALMONIDS	Umatilla Confederated Tribes (CTUIR)	September

2002-037-00	2002-037-00 EXP FRESHWATER MUSSELS IN UMATILLA & JOHN DAY	Umatilla Confederated Tribes (CTUIR)	September
2002-050-00	2002-050-00 EXP ASOTIN CNTY RIPARIAN BUFFER/COUSE-TENMILE CREEKS	Asotin County Conservation District	September
2002-053-00	2002-053-00 ASSESS SALMONIDS IN ASOTIN CREEK WATERSHED	Washington Department of Fish and Wildlife (WDFW)	December
2002-054-00	2002 054 00 PROTECT & RESTORE ASOTIN CR WATERSHED	Nez Perce Tribe	October
2002-060-00	2002 060 00 NEZ PERCE HARVEST MONITORING	Nez Perce Tribe	November
2002-074-00	2002-074-00 RESTORE CROOKED FORK CR/COLT KILLED CR ANALYSIS AREA	Nez Perce Tribe	November
2003-001-00	PI 2003-001-00 MASASTASH CREEK PREDESIGN	Fishpro, Inc.	October
2003-009-00	2003-009-00 EXP CANADA SHELF SALMON SURVIVAL STUDY	Canada Department Of Fisheries and Oceans	September
2003-011-00	200301100 EXP IMPL HAB RESTOR FOR COL R/EST 06	Lower Columbia River Estuary Partnership (LCREP)	October
2003-012-00	2003-012-00 PROTECT SHILLAPOO WILDLIFE AREA	Washington Department of Fish and Wildlife (WDFW)	September
2003-013-00	PI 200301300 EXP GRAYS RIVER WATERSHED ASSESSMENT	Pacific States Marine Fisheries Commission (PSMFC)	December
2003-013-00	PI 200301300 EXP GRAYS RIVER WATERSED ASSESSMENT	US Department of Energy (DOE)	December
2003-017-00	200301700 EXP WENATCHEE RM&E PILOT - UNIV OF ALASKA, FAIRBANKS	University of Alaska Fairbanks	September
2003-017-00	2003 017 00 WENATCHEE R M & E PILOT	US Forest Service (USFS) - Wenatchee	September
2003-017-00	2003-017-00 EXP RM&E PILOT PROJECT - NOAA FISHERIES (PROJ MGT)	National Oceanic and Atmospheric Administration (NOAA)	September
2003-023-00	2003-023-00 CAP CHIEF JOSEPH HATCH PROG- PLAN AND PRE-DESIGN	Colville Confederated Tribes	September
2003-023-00	CHIEF JOE DAM HATCHERY EIS	D J Warren and Associates, Inc.	December
2003-036-00	200303600 EXP CBFWA MONITOR/EVALUATION PROJECT	Columbia Basin Fish and Wildlife Authority (CBFWA)	September
2003-038-00	2003-038-00 EXP EVAL RESTOR OF SNAKE R CHINOOK	US Department of Energy (DOE)	September
2003-041-00	200304100 EXP EVAL SALMON THRU SNAKE R DAMS	National Oceanic and Atmospheric Administration (NOAA)	September
2003-050-00	200305000 EXP EVAL REPROD OF STEELHEAD	University of Washington	November
2003-054-00	PI 200305400 REPRO OF STEELHEAD IN HOOD RIV	Oregon State University	September
2003-060-00	2003-060-00 EXP EVAL REPRO SUCCESS SNAKE RVR CHINOOK	Washington Department of Fish and Wildlife (WDFW)	December
2003-072-00	200307200 EXP BIODIVERSITY SYST FOR COLUMBIA	Northwest Habitat Institute	September
2003-114-00	200311400 PRE ACOUSTIC TRACKING FOR SURVIVAL AND MOVEMENT	Kintama Research	September
2004-002-00	200400200 EXP PNAMP FUNDING	US Geological Survey (USGS) - Cook	September
2005-002-00	200500200 - LOWER GRANITE DAM ADULT		September

	TRAP IMPROVEMENTS		
2005-002-00	200500200 EXP LWR GRANITE DAM ADULT TRAP OPERATION	National Oceanic and Atmospheric Administration (NOAA)	September
2006-001-00	2006-001-00 EXP MCINTYRE DAM FEASIBILITY STUDY	Colville Confederated Tribes	October
2006-003-00	2006-003-00 PL DESERT WILDLIFE AREA O&M	Washington Department of Fish and Wildlife (WDFW)	September
2006-004-00	2006-004-00 EXP WENAS WILDLIFE AREA O&M	Washington Department of Fish and Wildlife (WDFW)	September
2006-005-00	2006-005-00 EXP ASOTIN CREEK WILDLIFE AREA O&M	Washington Department of Fish and Wildlife (WDFW)	September