

Tom Karier
Chair
Washington

Frank L. Cassidy Jr.
"Larry"
Washington

Jim Kempton
Idaho

W. Bill Booth
Idaho



Joan M. Dukes
Vice-Chair
Oregon

Melinda S. Eden
Oregon

Bruce A. Measure
Montana

Rhonda Whiting
Montana

February 1, 2007

DISCUSSION MEMORANDUM

TO: Council Members

FROM: Peter Paquet, Manager Wildlife and Resident Fish

SUBJECT: Demonstration of Northwest Environmental Data-Network Portal

PURPOSE

The purpose of this demonstration is to familiarize the Council with data portal, an internet based tool, which was developed through the Northwest Environmental Data-Network.

BACKGROUND

The Northwest Environmental Data-Network (NED) is a collaborative effort led by the Northwest Power and Conservation Council (NPCC) and NOAA Fisheries Northwest Regional Office and Fisheries Science Center. The NED Portal meets regional data discovery and sharing needs identified by Scientific Applications International Corporation (SAIC) in their regional data needs assessment. The software chosen for the Portal meets all of SAIC's recommended specifications. The Portal supports and leverages other national, regional, state, and local efforts, including the International Organization for Standardization (ISO), Federal Geographic Data Committee (FGDC), Geospatial One-Stop (GOS), National Spatial Data Infrastructure (NSDI), E-Government initiatives, and state Portal development. The NED Portal integrates existing distributed resources from a wide array of entities, compiling lots of disparate data in one place. Just as there is a hierarchy of data (from national, to regional, to state-level), there are partnership arrangements that must be developed to ensure that the Portals work together.

The NED Portal is an easy to use Internet tool that can:

- Search for data based on user defined geographic boundaries, key words, or full text (like Google).
- Make custom maps by overlaying many different maps from a variety of sources.

- Discover and download tables of data related to your search (e.g. in Excel).
- Automatically harvest data from other locations.
- Organize information in indexes and inventories so that you can easily find it.
- Accept your existing metadata or use the template to enter it on-line.
- Print, save or email copies of the data or maps that you create or find.
- Allow others to find and use your information.

Why was the Portal Created? An independent regional study in 2003 (SAIC Report) found that many regional researchers, scientists, managers and members of the public can not easily locate the data needed to stay informed and make decisions. The study recommended the creation of a Regional Data Portal based on National and International standards.

Who Manages the Portal? The Northwest Environmental Data Network (NED), a group of Federal, State, Tribal and Non-Governmental entities is responsible for managing the Portal and the pilot installation. The Portal will continue to develop during 2007 and will be continually updated as new data sets become available.

Day to day management of the Portal will be provided by Channel Stewards who will help to organize the content of Portal Channels (for example for Endangered Salmonid data), promote Portal use, assist those wishing to publish to the Portal, and ensure that published information meets Portal standards.

Who Can Use the Portal? Anyone who has access to the Internet can get information from the Portal and any information published to the Internet through a standard format can be harvested by the Portal. Anyone wanting to publish their metadata can create a new account.

What Technology Makes the Portal Work? It is based on off-the-shelf technology, the [Portal Toolkit](#) from ESRI. This technology is also used by the National Geodata.gov Portal. The NED Portal will provide data to the National Portal. The benefit of a regional portal is twofold: the region can decide what data is important to it and focus on developing data resources that are not necessarily of national interest, and regional Channel Stewards can help to refine data quality to meet regional requirements, a necessary service that National Portals do not provide.

c:\documents and settings\paquet\desktop\ned portal demo 07.doc (Peter Paquet)



Finding, Sharing and Using Distributed Data -- Northwest Environmental Data-Network Portal Development

NW Power and Conservation Council

February 13, 2007

Background

There is agreement that we all need a better way to find and use fish, wildlife, and water data. NED is a collaborative effort led by the Northwest Power and Conservation Council and NOAA Fisheries. The NED Portal has been deployed at a pilot level to support regional data discovery and sharing needs identified by Scientific Applications International Corporation in their regional data needs assessment. The Portal supports and leverages other national, regional, state, and local efforts by integrating existing distributed resources in one place.

What the Portal is and what it can do [<http://nppc.bpa.gov/Portal/>]

- Discover distributed data (i.e., from different web sites) by doing searches based on geographic boundaries, key words, or a known location picked from a standard list. The search is performed on the metadata records attached to each data set. Metadata is analogous to the card catalog at the library which describes the holdings.
- Share data (tabular or spatial) by posting its metadata to the Internet in industry standard format.
- Look at the data, in spatial (or map) form.
- Overlay different data sets in map form.
- Print, save and recover, or email a copy of data or a map you create.
- Discover and download tabular data for local use.
- Index and organize tabular data, spatial data, and other electronic products such as publications.
- Provide a current inventory of all data published in the standard format.

Features of the NED Portal

- Cost effective. Builds upon and ties together comparable national and state-level efforts.
- Metadata records can be uploaded, automatically harvested, or input via the Portal's template.
- Compliant with National and International standards, including those of the ISO, NSDI and FGDC.
- Based on off-the-shelf technology, ESRI's Portal Toolkit. This also runs the nation's Portal at <http://www.geodata.gov>
- Meets regional needs for access to Pacific Northwest natural resource policy, planning, and management data.
- A single source for locating and discovering data.

What it will take for the Portal to Succeed

- Identifying a Portal Administrator and Channel Steward. The Administrator will make sure that the Portal continues to run. The Steward will work with data providers to get data posted to the system that complies with agreed standards for metadata and has certified data quality.
- Posting of data. Agencies and entities completing work must post their metadata to the Internet before the Portal can find it. Data can also be posted for easy access. A web map service (or other standard web-accessible service) allows easy overlay of these data.
- Agencies or entities that cannot post data may need help posting (and/or hosting) their metadata and/or actual data sets.

What it is likely to cost to populate and maintain the Portal

- Infrastructure and staff. A Portal Administrator and Channel Steward are needed in a full time capacity. Depending on the amount of use, more data content stewards could be needed for specific subjects.
- Fiscal Year 2007 budget needs will continue to be developed by the NED Steering Committee and covered under the Council's Fish and Wildlife Program. Out year budget is proposed to be included in a new BPA/Council Regional Data Management Planning and Coordination item. This is consistent with Independent Scientific Review Panel guidance to make scientifically credible data available for fish and wildlife planning and management activities.

Policy Commitment

The system will work if metadata are posted to the Portal, raw data are available on the Internet, and the quality of the data is assured. Regional Executives will be asked to support the common use of basic standards and protocols for data quality and metadata across their regional programs. Similar requirements are already in place for many agencies, and need to be implemented throughout the region.

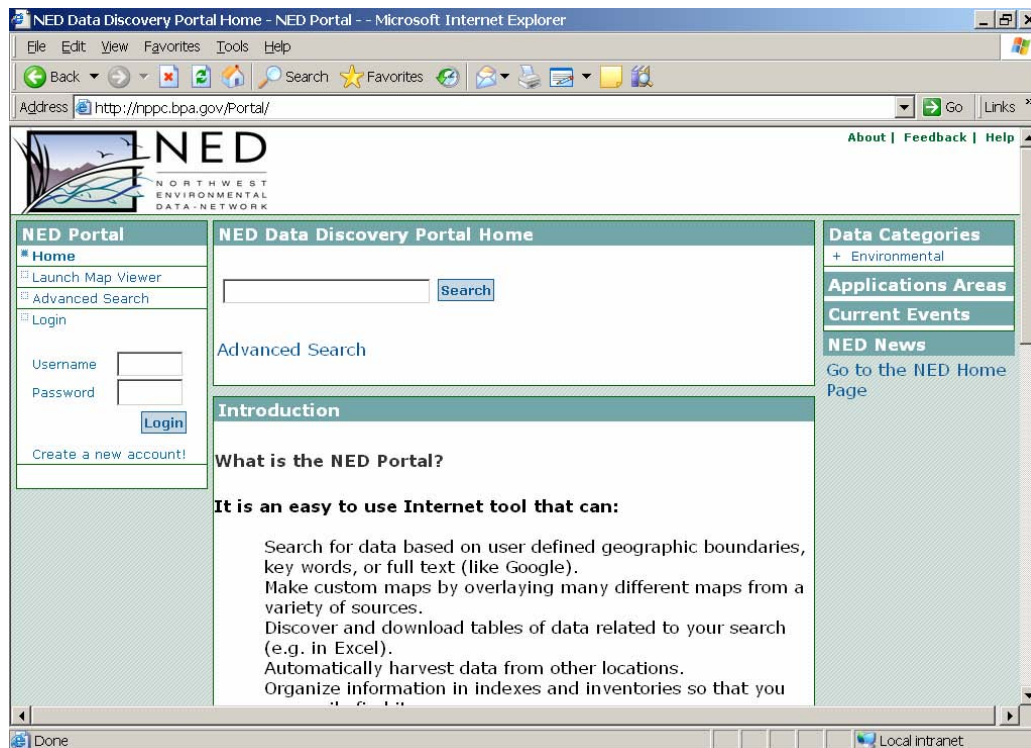
Conclusion

The Portal is a technology evolution, not a revolution. It can make regional data sets discoverable and available in their native formats once their metadata is posted. The Portal will allow anyone to discover and use the data that are available to help solve natural resource problems. There is an opportunity to tap into national assistance at Geospatial One-Stop to further develop both the technology and people partnerships that will be necessary for NED to succeed. The Portal supports an adaptive management approach to regional information system development.

Tom Pansky, Energy Resource Specialist, Bonneville Power Administration
Portland, Oregon, tepansky@bpa.gov, 503.230.3969
NED Technology for Data Discovery and Sharing Work Group

<http://www.nwcouncil.org/ned>

<http://nppc.bpa.gov/Portal>



NED



NORTHWEST
ENVIRONMENTAL
DATA-NETWORK

Portal Demonstration

February 13 2007
Northwest Power and
Conservation Council

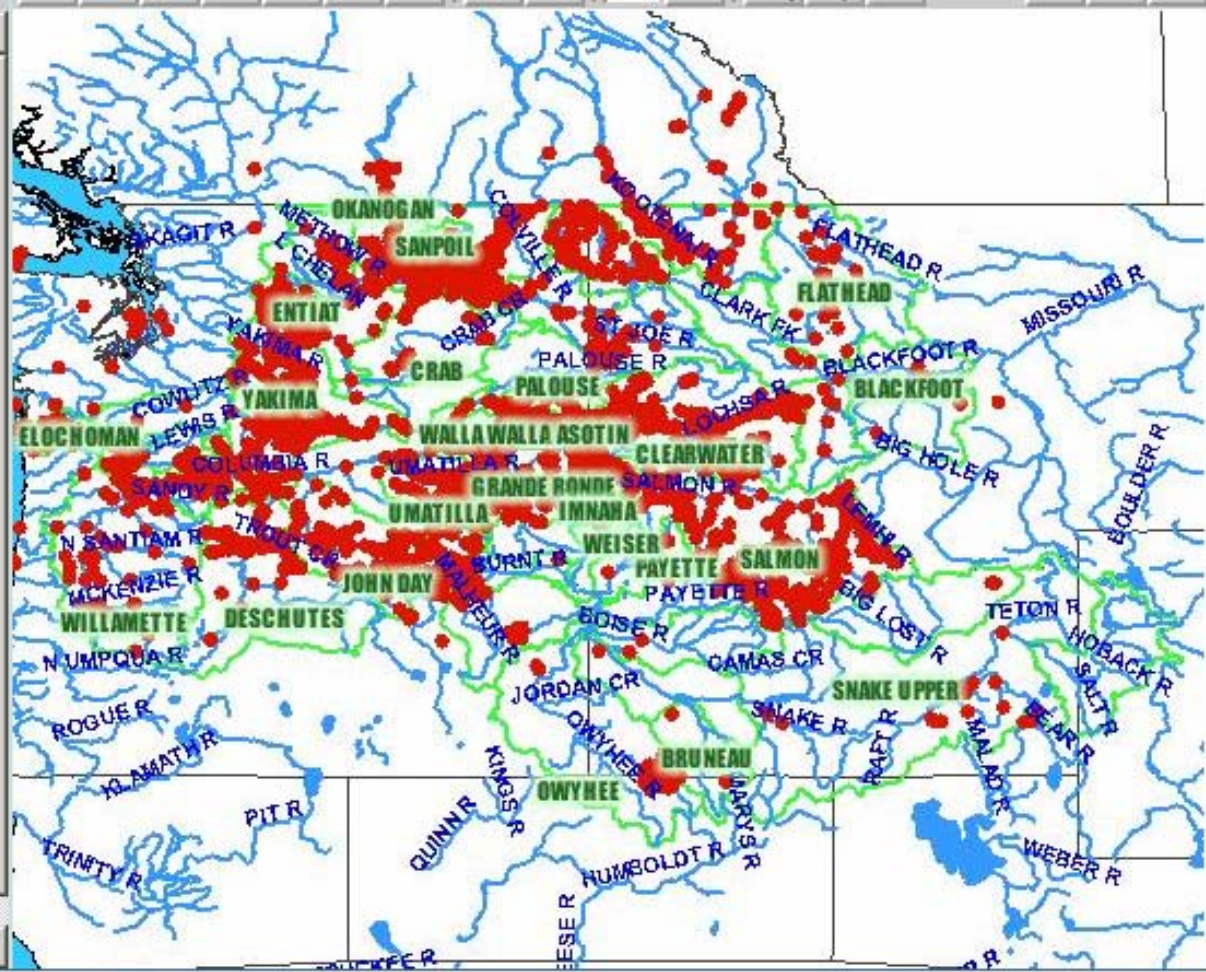
Tom Pansky, Energy Resource Specialist, BPA

NED Technology for Data Discovery and
Sharing Work Group



☒ portalmap

- ☒ Pisces Projects
- ☐ Federal Dams
- ☐ Non-Federal Dams
- ☐ Proposed or Identified Hydrosites
- ☒ Major Lakes
- ☒ Major Rivers
- ☐ Columbia R. Basin
- ☒ NPCC Subbasins
- ☒ NW Statesb
- ☐ NW Satellite 1km



Metadata Portal **MAP VIEWER**

IDENTIFY

Select a layer and click on the map.

Layers:

Pisces Projects

Sarah Branum

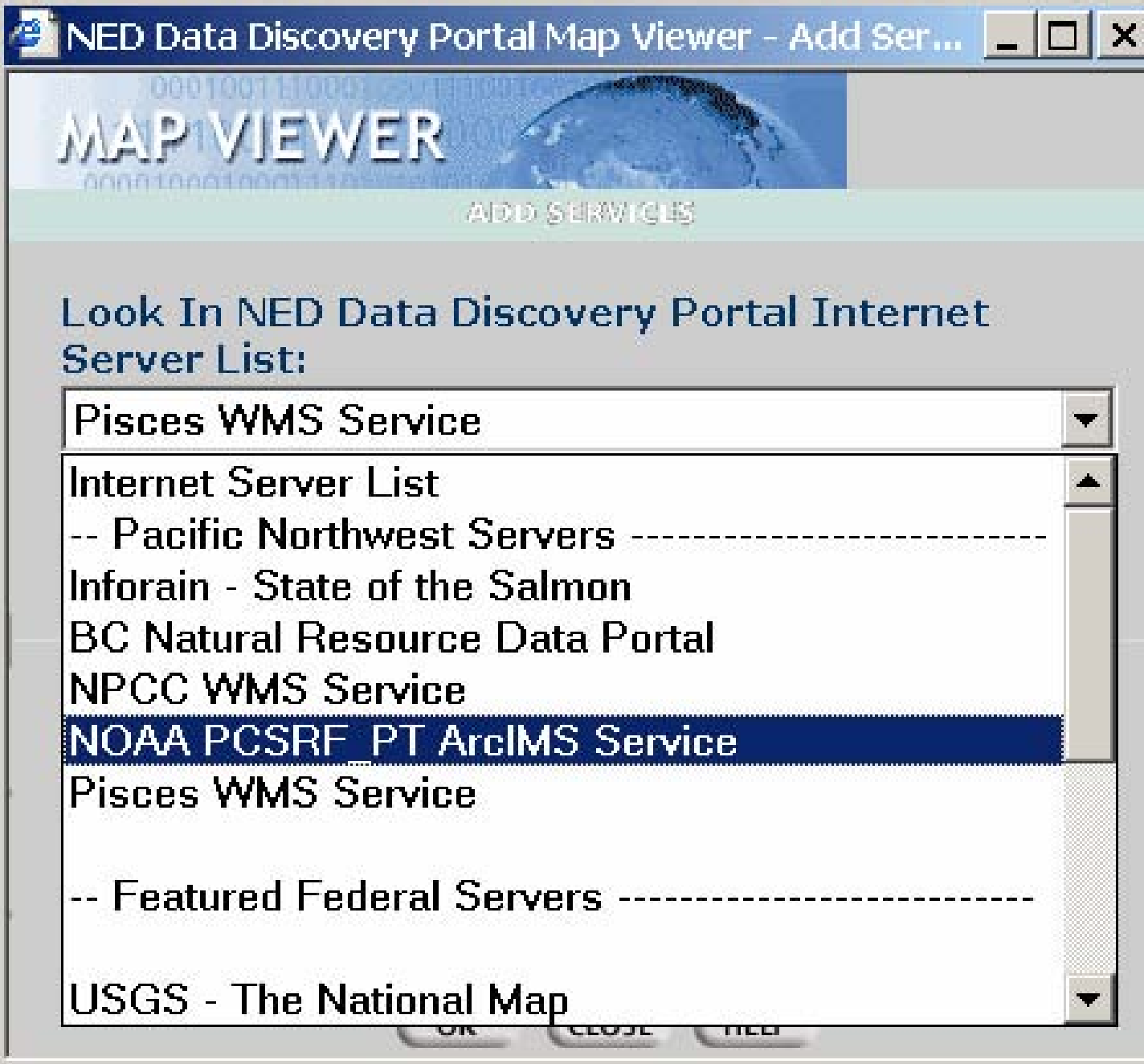
Sarah Branum

Location: X - Y 44.3803

FIELD	VALUE
PROJECTNUMBER	1988-053-08
PROJECTTITLE	Hood R Powerdale/Oak Springs
PROJECTMANAGERNAME	Sarah Branum
SPONSORNAME	Oregon Department Of Fish and Wildlife (ODFW)
WORKSTATEMENTELEMENTID	15744
WORKELEMENTID	158
WORKSTATEMENTELEMENTSITEID	12890
WORKELEMENTNAME	Mark/Tag Animals
WORKELEMENTTITLE	Fin clip & CWT all smolts
LOCATIONDESCRIPTION	Round Butte Hatchery
LATITUDE	44.3621
LONGITUDE	-121.1633
WEENDDATE	8/15/2007 12:00:00 AM
WECOMPLETIONDATE	
ID_NAME	1988-053-08
OBJECTID	9379
AREA	0

CLOSE

HELP



MAP VIEWER

ADD SERVICES

Select service(s) to add.
Press Shift or Ctrl to select
multiple services.

Crit_Geoviewer
PCSRF
PCSRF_Loc
PCSRF_PT
PNSHP
PNSHP_Loc
SERIES
SERIES_Loc
Wenatchee

← BACK

ADD

CLOSE



-

Metadata Portal **MAP VIEWER**

IDENTIFY

Select a layer and click on the map.

Layers: PCSRF_Objective ▼

PCSRF_Objective

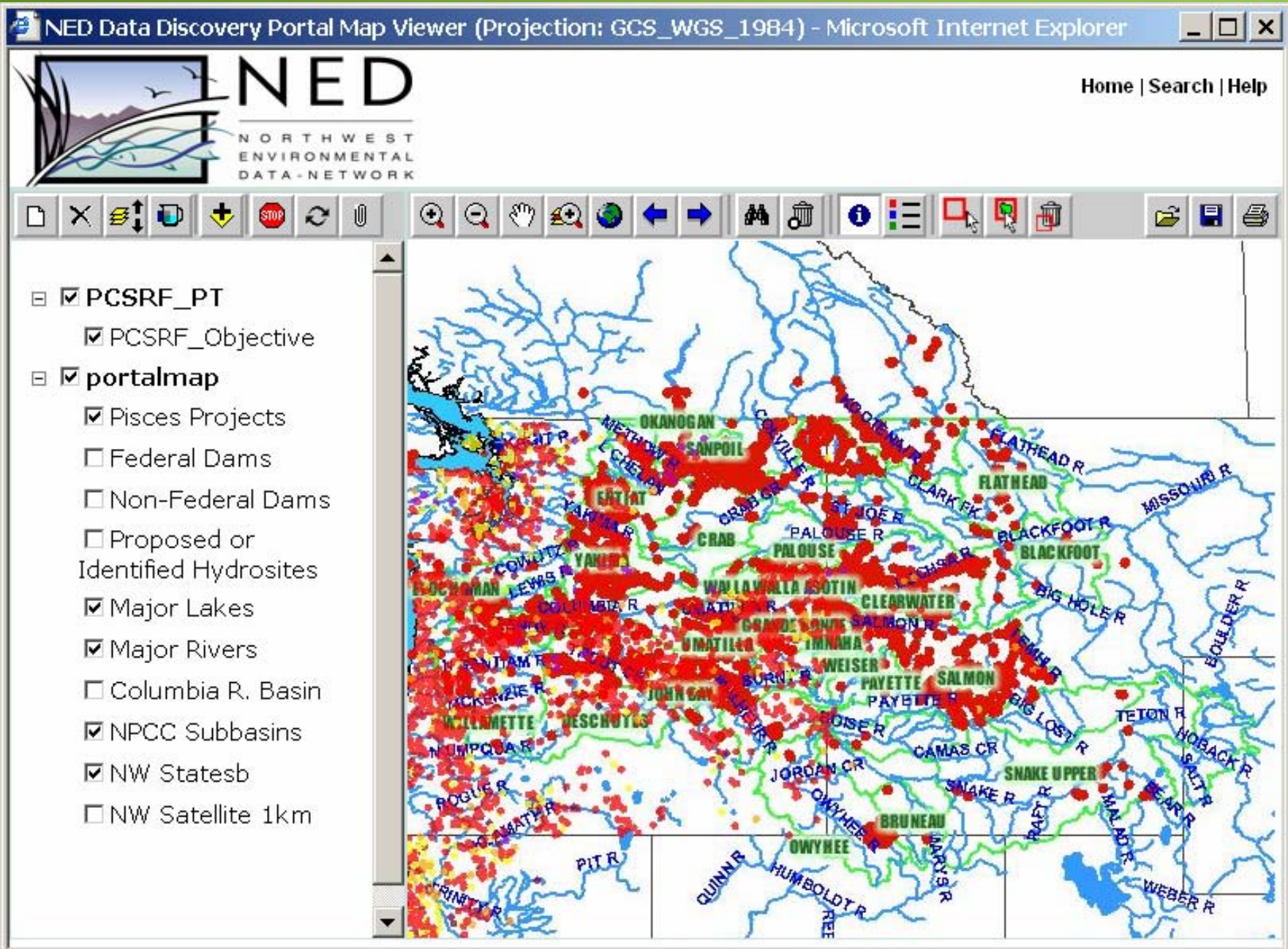
Upper Deschutes
Watershed
Stream Bank
Stabilization

Location: X - Y 44.0691

FIELD	VALUE
DATABASEID	1959
AGENCY	OWEB
DATABASEWS	20001193
PCSRF_OBJECTIVE	Salmon Habitat Protection and Restoration
PCSRF_FUND	17667
PROJECT_NAME	Upper Deschutes Watershed Stream Bank Stabilization
PCSRF_YEAR	2000
LOCATIONTYPE	LLID Point Event
ANALYSIS_SCALE	6th Field HUC
OBJECTID	2035
AREA	0
LEN	0

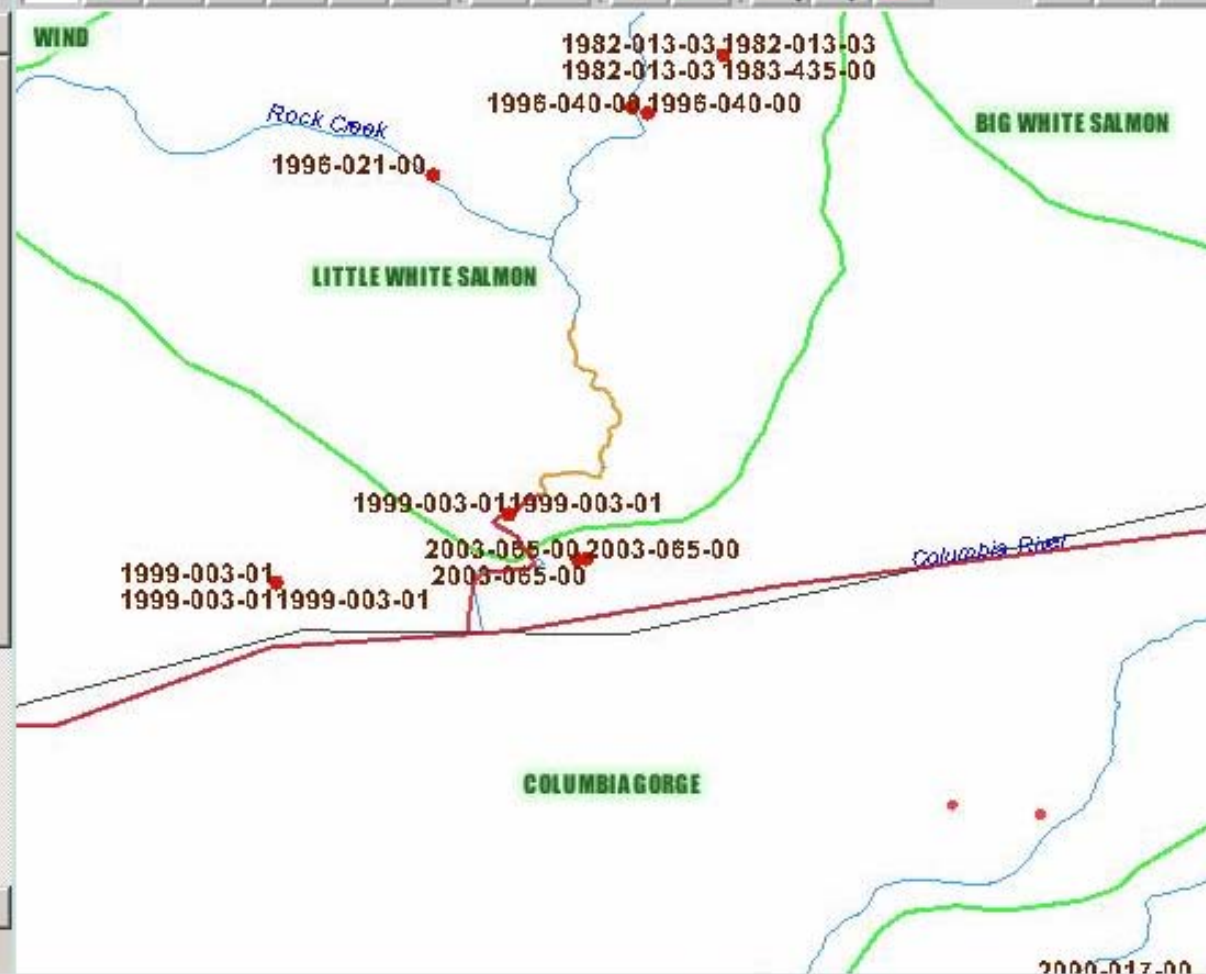
CLOSE

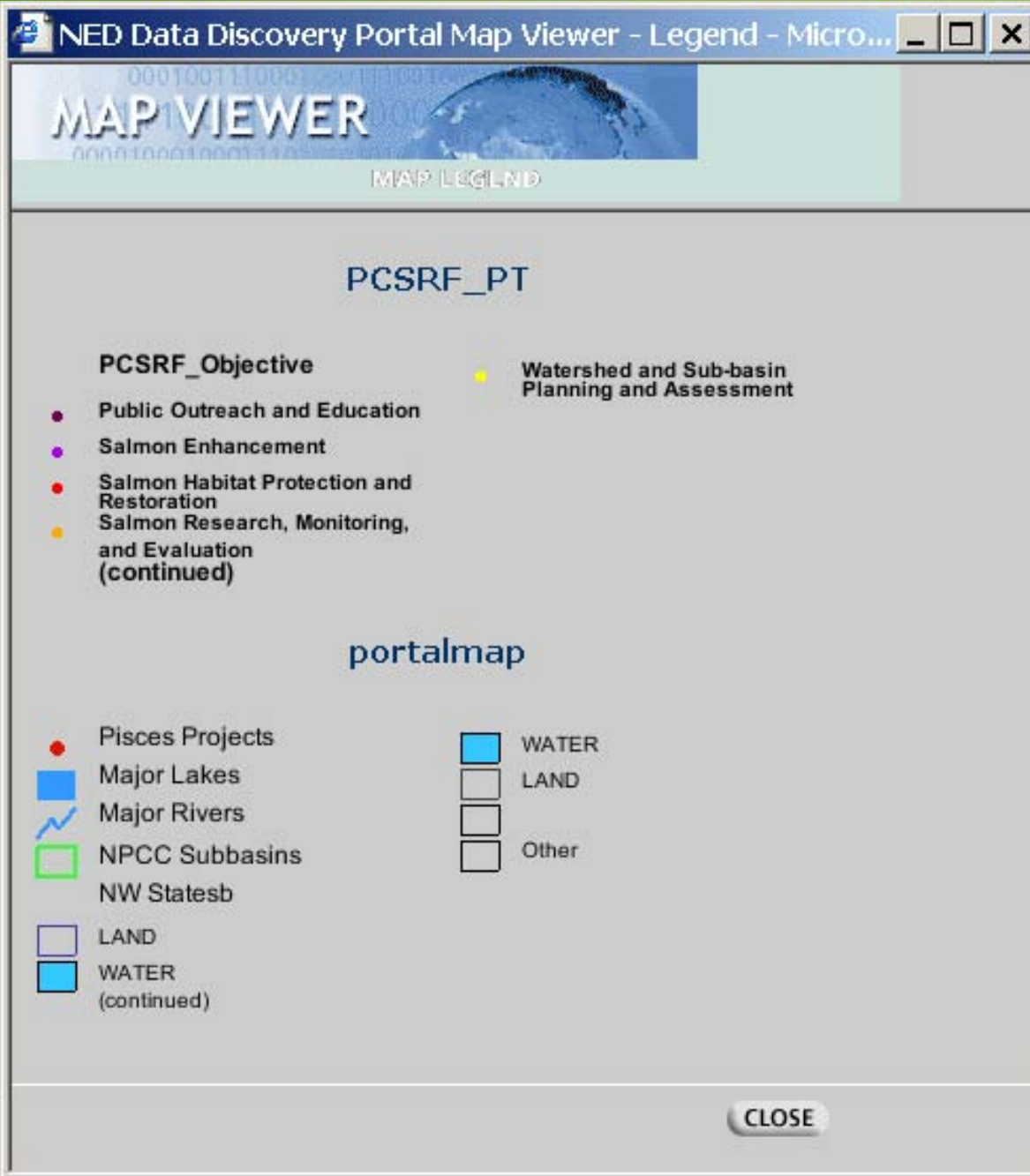
HELP



[Home](#) | [Search](#) | [Help](#)

- ☒ Crit_Geoviewer
- ☒ PCSRF_PT
 - ☒ PCSRF_Objective
- ☒ Fish_Distribution_wm
- ☒ portalmap
 - ☒ Pisces Projects
 - ☐ Federal Dams
 - ☐ Non-Federal Dams
 - ☐ Proposed or Identified Hydrosites
 - ☒ WA DFW Waterbodies 24k
 - ☒ OR Waterbodies 24k
 - ☒ ID MT NHD Waterbodies 24k
 - ☒ WA DFW Streams 24k
 - ☒ OR Streams 24k





MAP VIEWER

ADD SERVICES

Look In NED Data Discovery Portal Internet Server List:

Inforain - State of the Salmon

Internet Server List

-- Pacific Northwest Servers -----

Inforain - State of the Salmon

BC Natural Resource Data Portal

NPCC WMS Service

NOAA PCSRF_PT ArcIMS Service

Pisces WMS Service

-- Featured Federal Servers -----

USGS - The National Map



MAP VIEWER

ADD SERVICES

Select data layer(s) to add.
Press Shift or Ctrl to select
multiple data layers.

- Minor Rivers
- Rivers with Shared Stocks
- Biodiversity by Watershed**
- Anadromous Chinook Distributio...
- Anadromous Chum Distribution
- Anadromous Coho Distribution
- Anadromous Pink Distribution
- Anadromous Masu Distribution
- Anadromous Sockeye Distributio...
- Anadromous Steelhead Distribut...
- Ocean Distribution - Chum
- Ocean Distribution - Coho

☐ Select All

◀ BACK

ADD

CLOSE ▶



☒ ESRI Web Map Service

☒ Biodiversity by Watershed

☒ portalmap

☐ Pisces Projects

☐ Federal Dams

☐ Non-Federal Dams

☐ Proposed or Identified Hydrosites

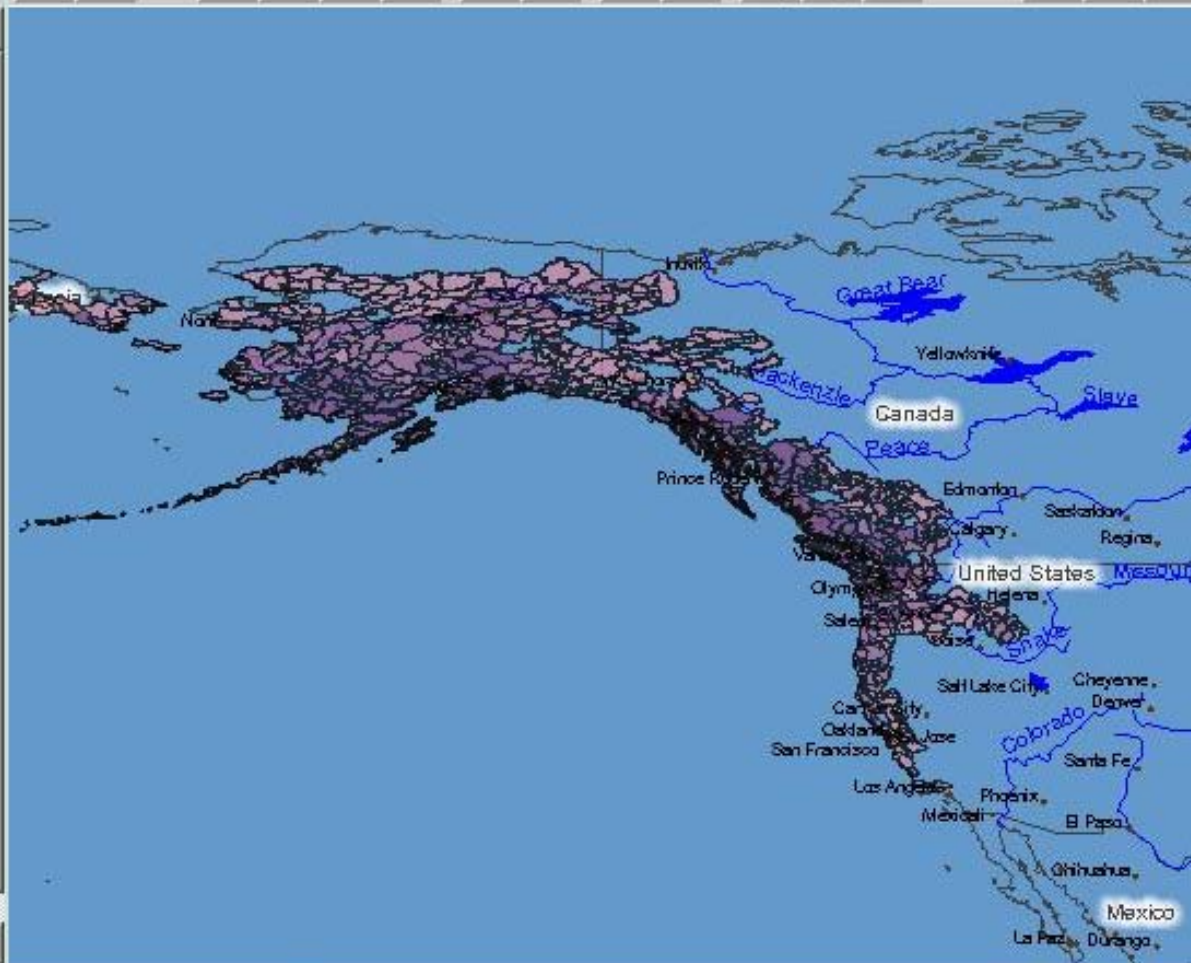
☒ cities

☒ rivers

☒ lakes

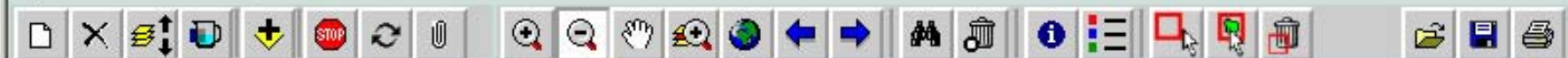
☒ country

☒ world30





[Home](#) | [Search](#) | [Help](#)



☒ **ESRI Web Map Service**

☒ Biodiversity by Watershed

☒ **portalmap**

☐ Pisces Projects

☐ Federal Dams

☐ Non-Federal Dams

☐ Proposed or Identified Hydrosites

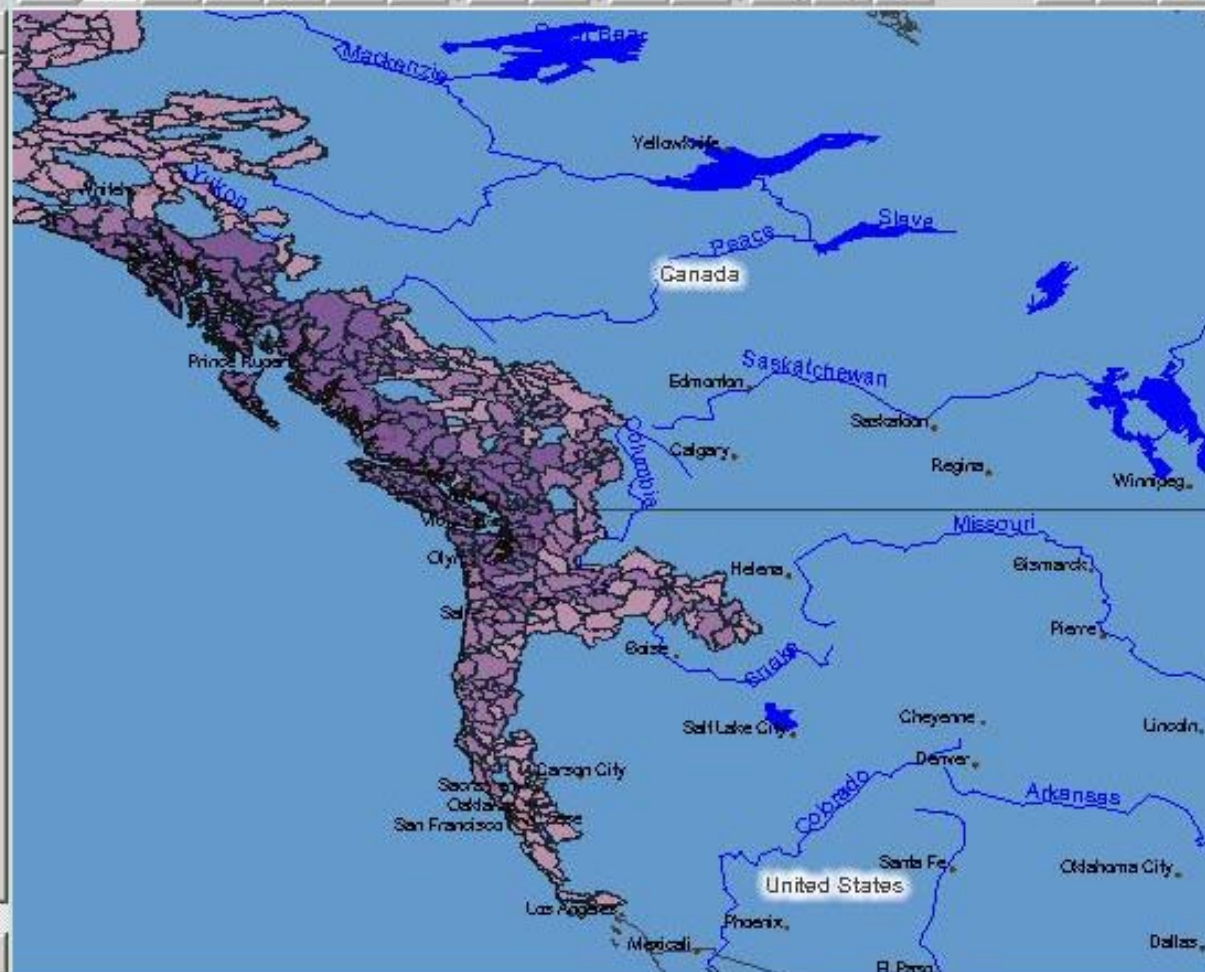
☒ cities

☒ rivers

☒ lakes

☒ country

☒ world30



[Home](#) | [Search](#) | [Help](#)

☒ **ESRI Web Map Service**

☒ Biodiversity by Watershed

☒ **portalmap**

☐ Pisces Projects

☐ Federal Dams

☐ Non-Federal Dams

☐ Proposed or Identified Hydrosites

☒ Major Lakes

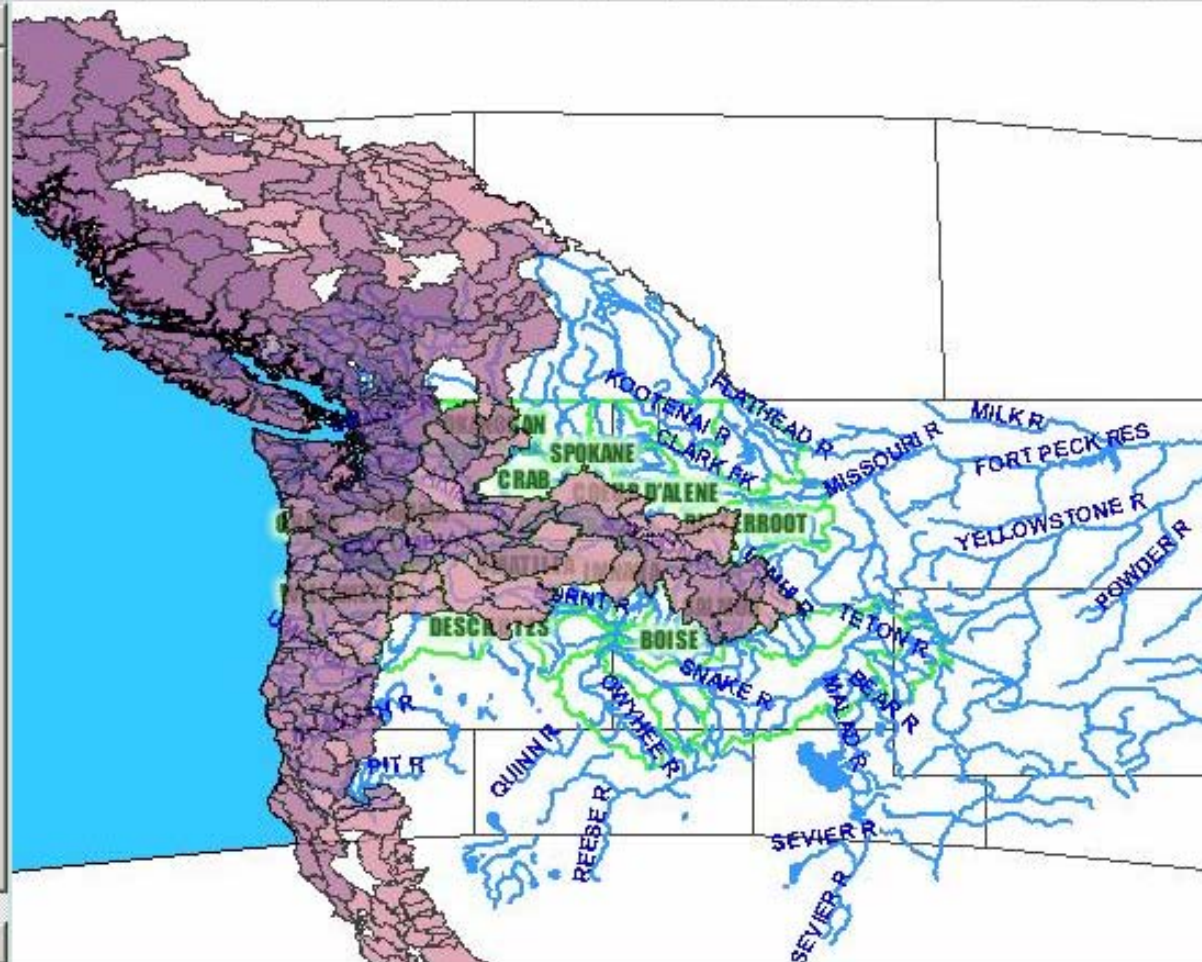
☒ Major Rivers

☐ Columbia R. Basin

☒ NPCC Subbasins

☒ NW Statesb

☐ NW Satellite 1km





[Home](#) | [Search](#) | [Help](#)

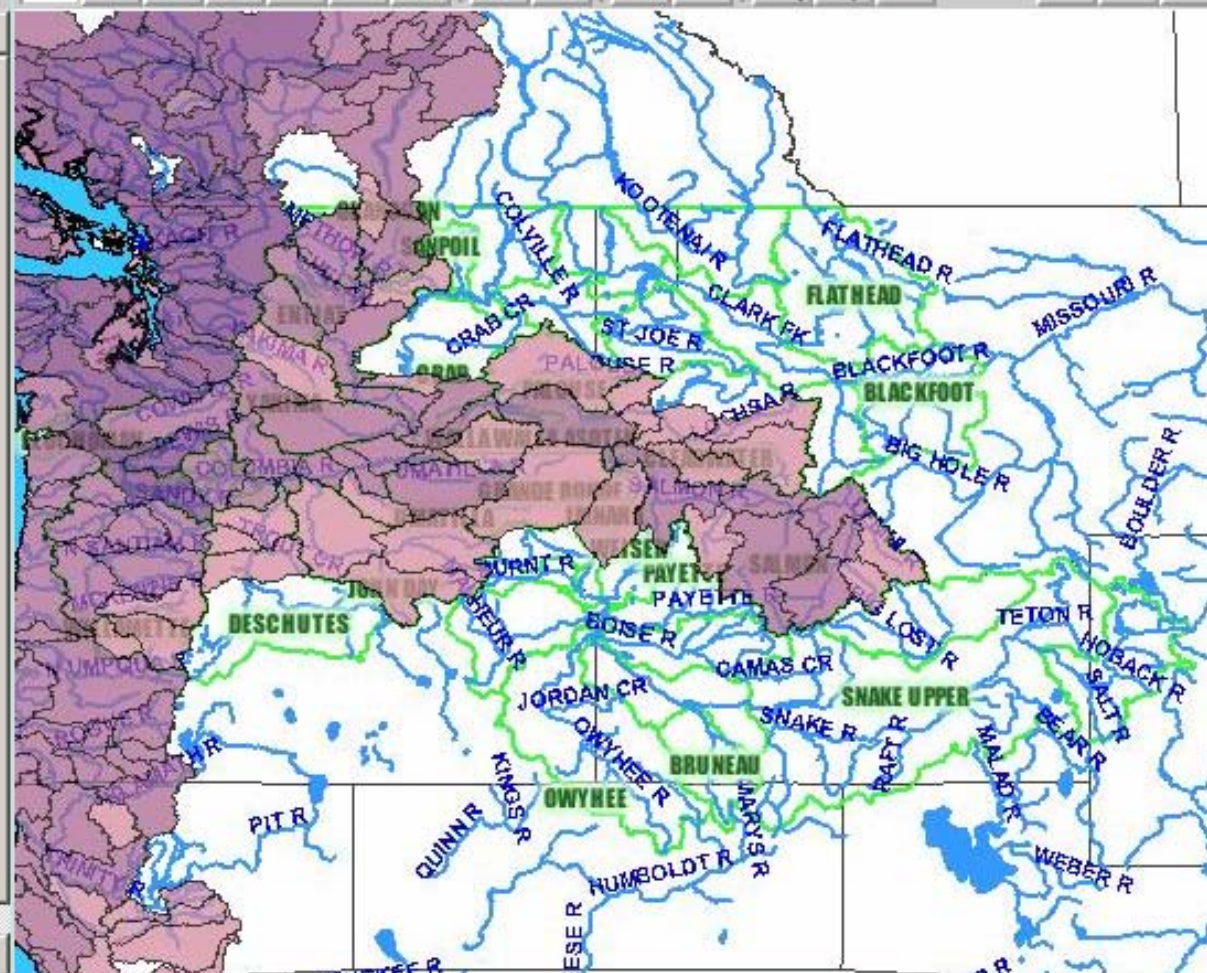


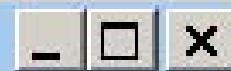
☒ **ESRI Web Map Service**

☒ Biodiversity by Watershed

☒ **portalmap**

- ☐ Pisces Projects
- ☐ Federal Dams
- ☐ Non-Federal Dams
- ☐ Proposed or Identified Hydrosites
- ☒ Major Lakes
- ☒ Major Rivers
- ☐ Columbia R. Basin
- ☒ NPCC Subbasins
- ☒ NW Statesb
- ☐ NW Satellite 1km





Find

Close Window

What do you want to find?

Place

Find a Place?

hood

Go

e.g. Redlands

Click the place you want to search.

HOOD ST RES/MCMILLAN RES DAM

BADGER (HOOD RIVER) DAM

MT HOOD COMM COLLEGE RES DAM

HOOD STREET HYDROSITE

WEST FORK HOOD RIVER HYDROSITE

[Home](#) | [Search](#) | [Help](#)

☒ **ESRI Web Map Service**

☒ Biodiversity by Watershed

☒ **portalmap**

☐ Pisces Projects

☐ Federal Dams

☐ Non-Federal Dams

☐ Proposed or Identified Hydrosites

☒ Major Rivers 100k

☒ Lakes 100k

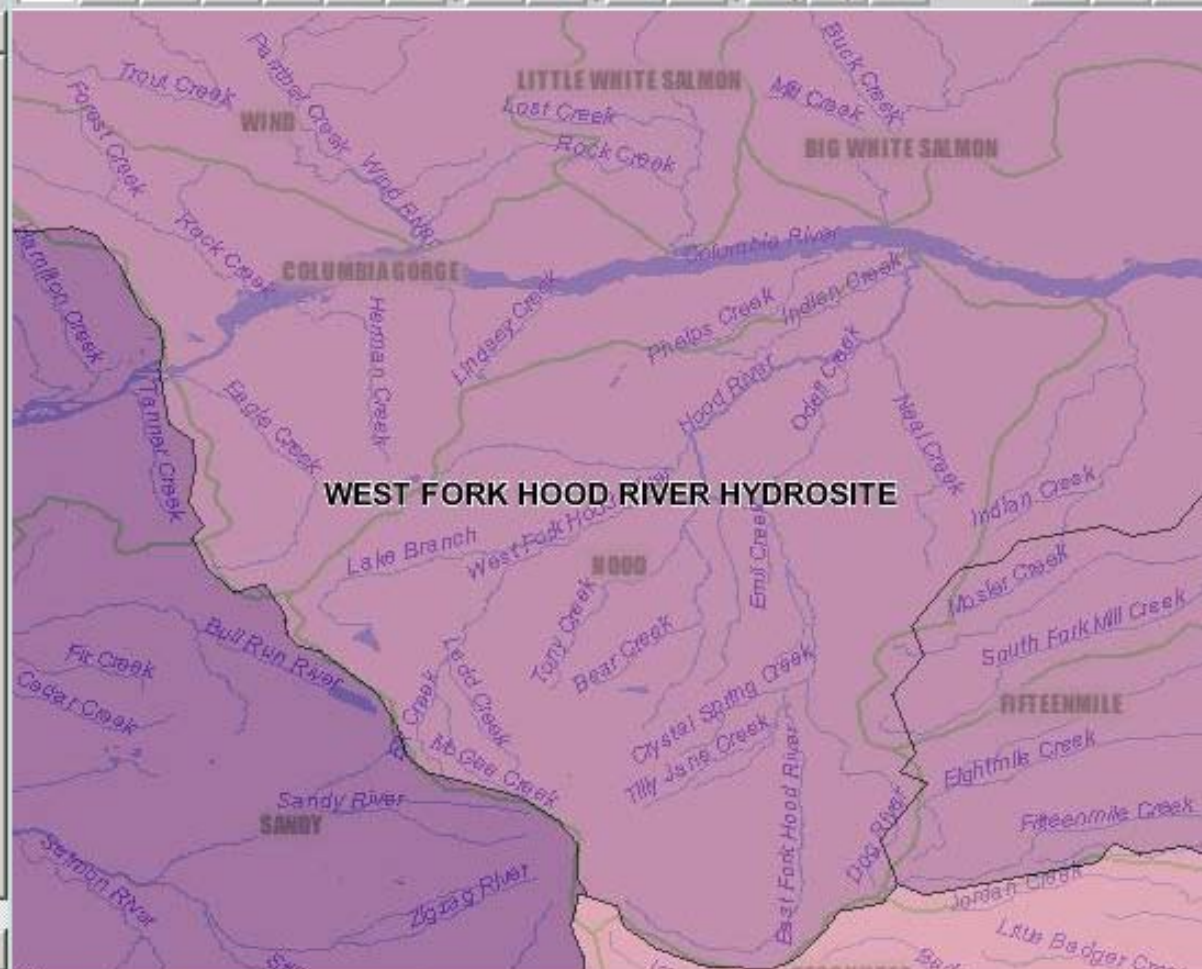
☐ Columbia R. Basin

☒ NPCC Subbasins

☐ USGS HUCs 100k

☒ NW Statesb

☐ NW Satellite 15m

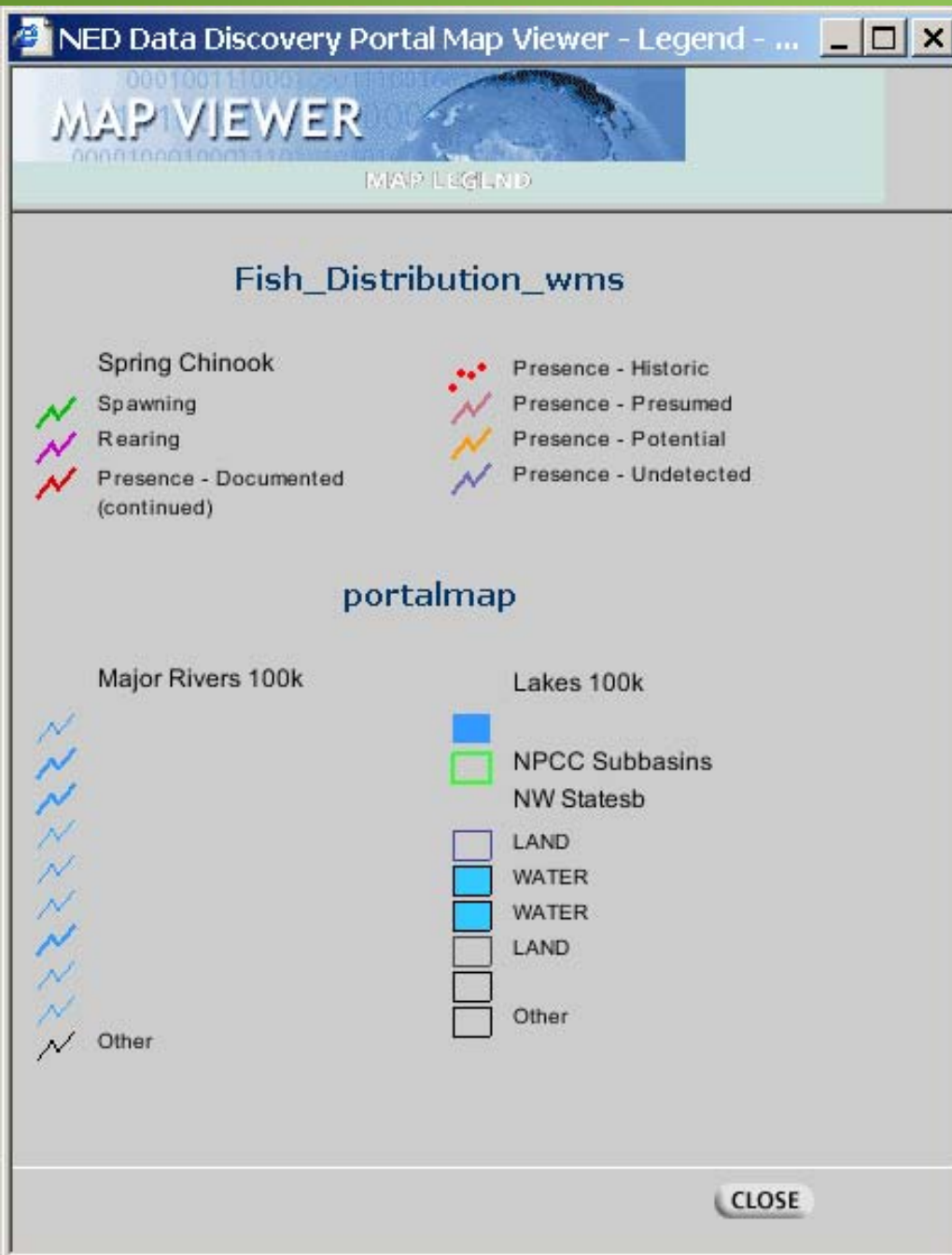


☒ Fish_Distribution_wm

- ☐ Winter Steelhead
- ☐ Summer Steelhead
- ☐ Bull Trout/Dolly Varden
- ☐ Sockeye
- ☐ Pink
- ☐ Winter Chum
- ☐ Fall Chum
- ☐ Summer Chum
- ☐ Coho
- ☐ Summer Chinook
- ☒ Spring Chinook
- ☐ Fall Chinook

☒ portalmap

- ☐ Pisces Projects



Metadata Portal MAP VIEWER

IDENTIFY

Select a layer and click on the map.

Layers:

Spring Chinook

Little White
Salmon River

Location: X - Y 45.7272

FIELD	VALUE
LENGTH	10411.57910156
LLID	1216464457050
SPPCODE	CHSP
DIST_TYPE	30
DIST_DESC	Potential
USE_TYPE	1
USE_DESC	Present
WRIA	29
LLID_SRC	100K
REV_DATE	05-06-27
REFCODE	0
STRM_NAME	Little White Salmon River
USE_DIST_SYM5	
OBJECTID	23215
AREA	0
LEN	10411.5758208384

CLOSE

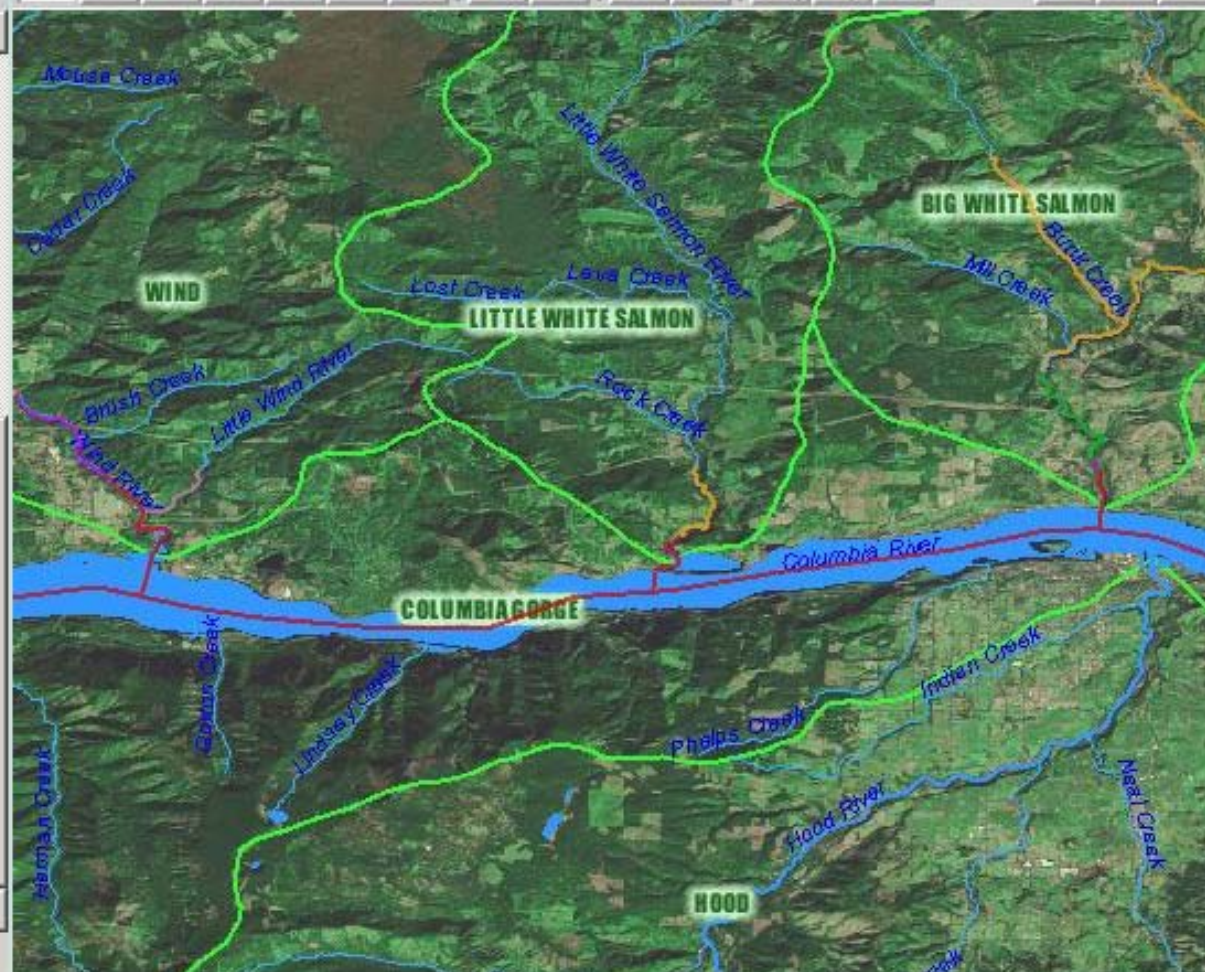
HELP

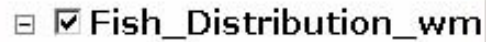


[Home](#) | [Search](#) | [Help](#)



- ☒ Spring Chinook
- ☐ Fall Chinook
- ☒ **portalmap**
 - ☐ Pisces Projects
 - ☐ Federal Dams
 - ☐ Non-Federal Dams
 - ☐ Proposed or Identified Hydrosites
 - ☒ Major Rivers 100k
 - ☒ Lakes 100k
 - ☒ Rivers 100k RRF
 - ☐ Columbia R. Basin
 - ☒ NPCC Subbasins
 - ☐ USGS HUCs 100k
 - ☐ Sixth Field Hucs
 - ☒ NW Statesb
 - ☒ NW Satellite 15m






- ☐ Winter Steelhead
- ☐ Summer Steelhead
- ☐ Bull Trout/Dolly Varden
- ☐ Sockeye
- ☐ Pink
- ☐ Winter Chum
- ☐ Fall Chum
- ☐ Summer Chum
- ☐ Coho
- ☐ Summer Chinook
- ☒ Spring Chinook
- ☐ Fall Chinook
- ☒ **portalmap**
- ☐ Pisces Projects



NED Data Discovery Portal Map Viewer (Projection: GCS_WGS_1984) - Microsoft Internet Explorer

 **NED**
NORTH WEST
ENVIRONMENTAL
DATA-NETWORK

Home | Search | Help

Map Viewer Controls:

- Base Images_wms
 - ☐ USGS Topo 24K
 - ☐ Landsat TC 2000
 - ☐ Hillshade30
 - ☒ NAIP CCM 2006
 - ☐ Orthos 8ft BW
- Fish_Distribution_wm
 - ☐ Winter Steelhead
 - ☐ Summer Steelhead
 - ☐ Bull Trout/Dolly Varden
 - ☐ Sockeye
 - ☐ Pink
 - ☐ Winter Chum
 - ☐ Fall Chum
 - ☐ Summer Chum

Map View: Aerial imagery showing a river system (likely the Little White Salmon River) flowing through a forested area. The river is highlighted in blue, and the surrounding land is shown in brown and green tones. The map is displayed in a Microsoft Internet Explorer browser window.



- ☒ Spring Chinook
- ☐ Fall Chinook
- ☒ **portalmap**
 - ☐ Federal Dams
 - ☐ Non-Federal Dams
 - ☐ Proposed or Identified Hydrosites
 - ☒ WA DFW Waterbodies 24k
 - ☒ OR Waterbodies 24k
 - ☒ ID MT NHD Waterbodies 24k
 - ☒ WA DFW Streams 24k
 - ☒ OR Streams 24k
 - ☒ ID MT NHD Streams 24k
 - ☒ Major Rivers 100k
 - ☒ NW Statesb

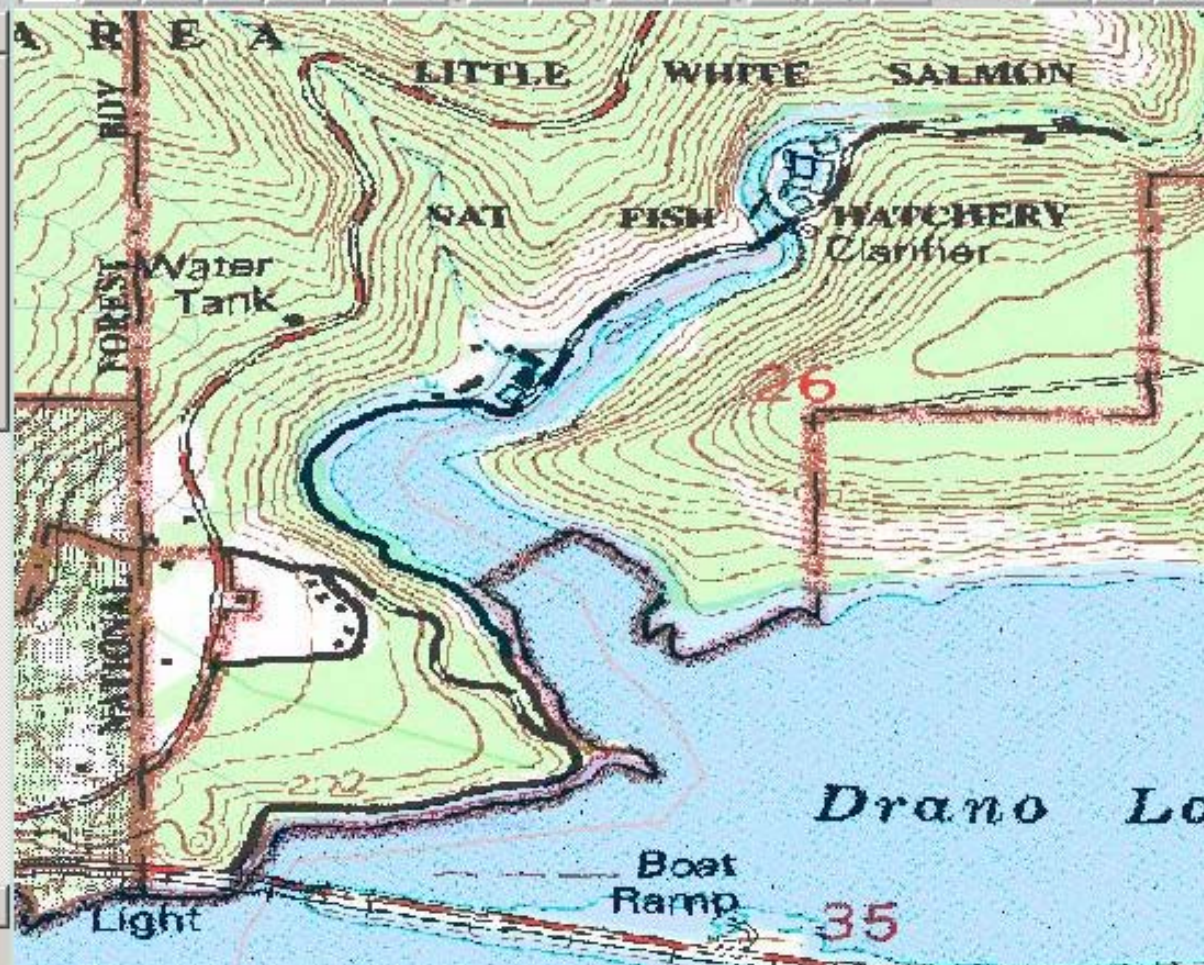


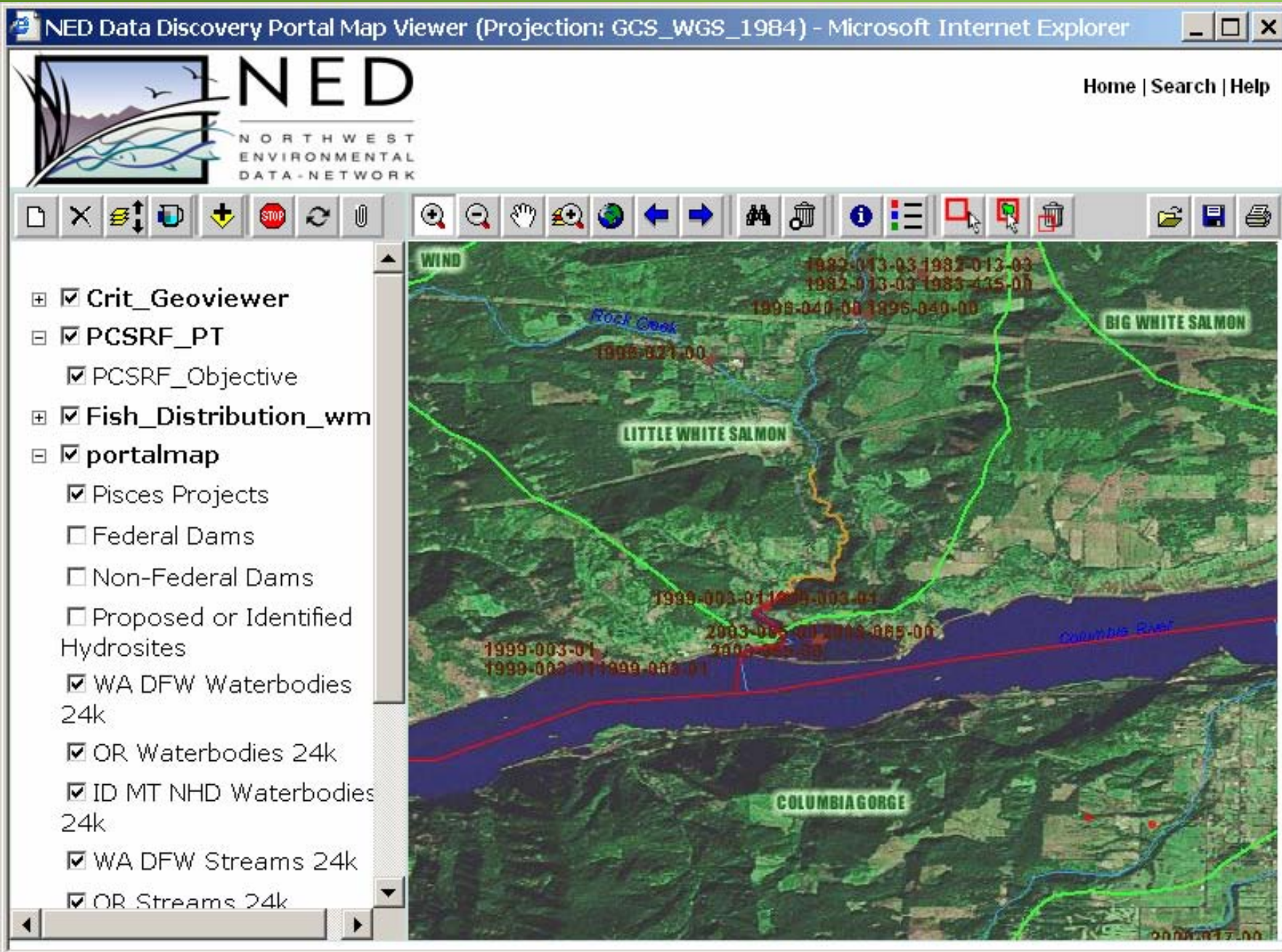
[Home](#) | [Search](#) | [Help](#)☒ **Base_Images_wms**

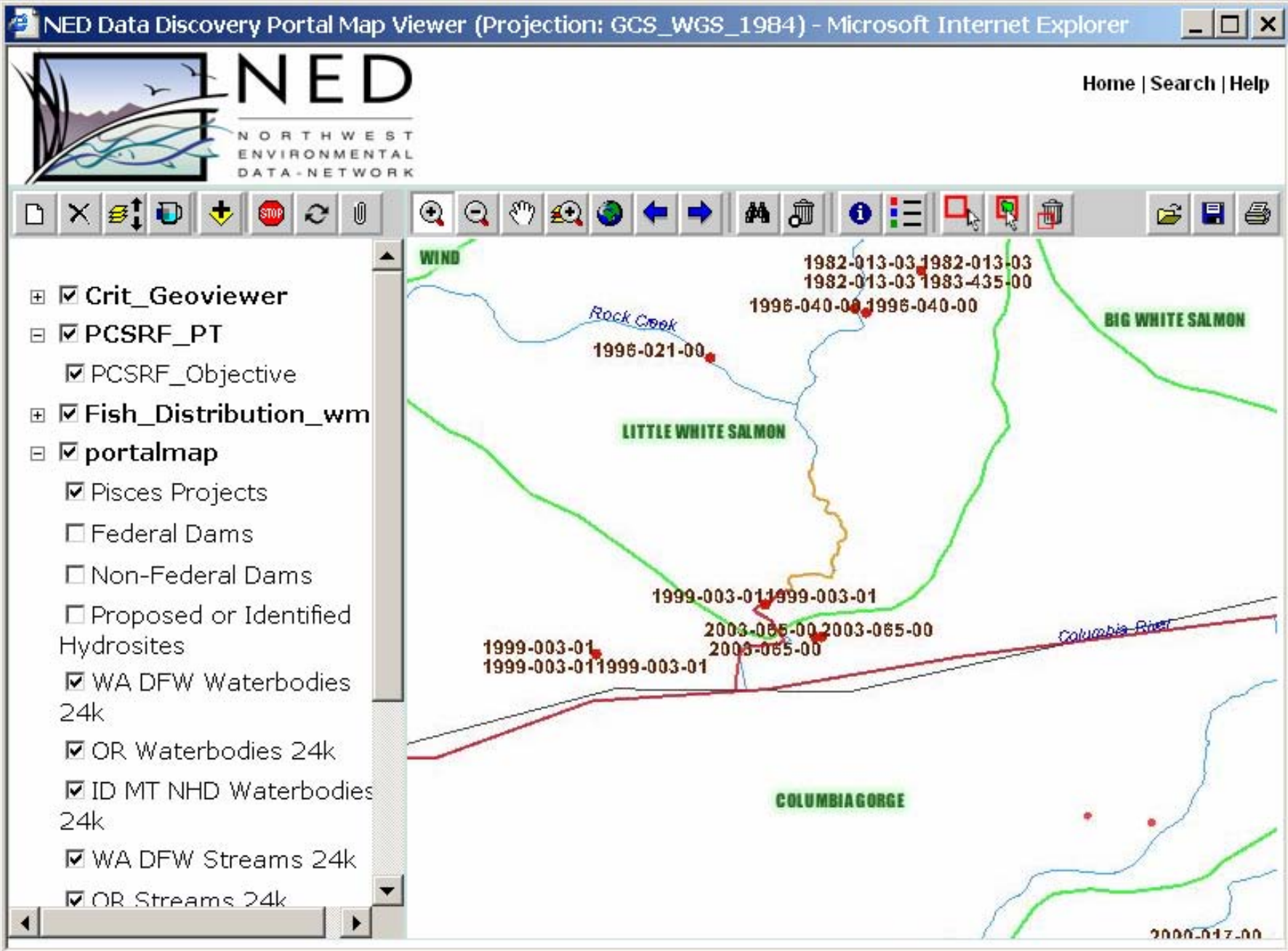
- ☒ USGS Topo 24K
- ☐ Landsat TC 2000
- ☐ Hillshade30
- ☒ NAIP CCM 2006
- ☐ Orthos 8ft BW

☒ **Fish_Distribution_wm**

- ☐ Winter Steelhead
- ☐ Summer Steelhead
- ☐ Bull Trout/Dolly Varden
- ☐ Sockeye
- ☐ Pink
- ☐ Winter Chum
- ☐ Fall Chum
- ☐ Summer Chum

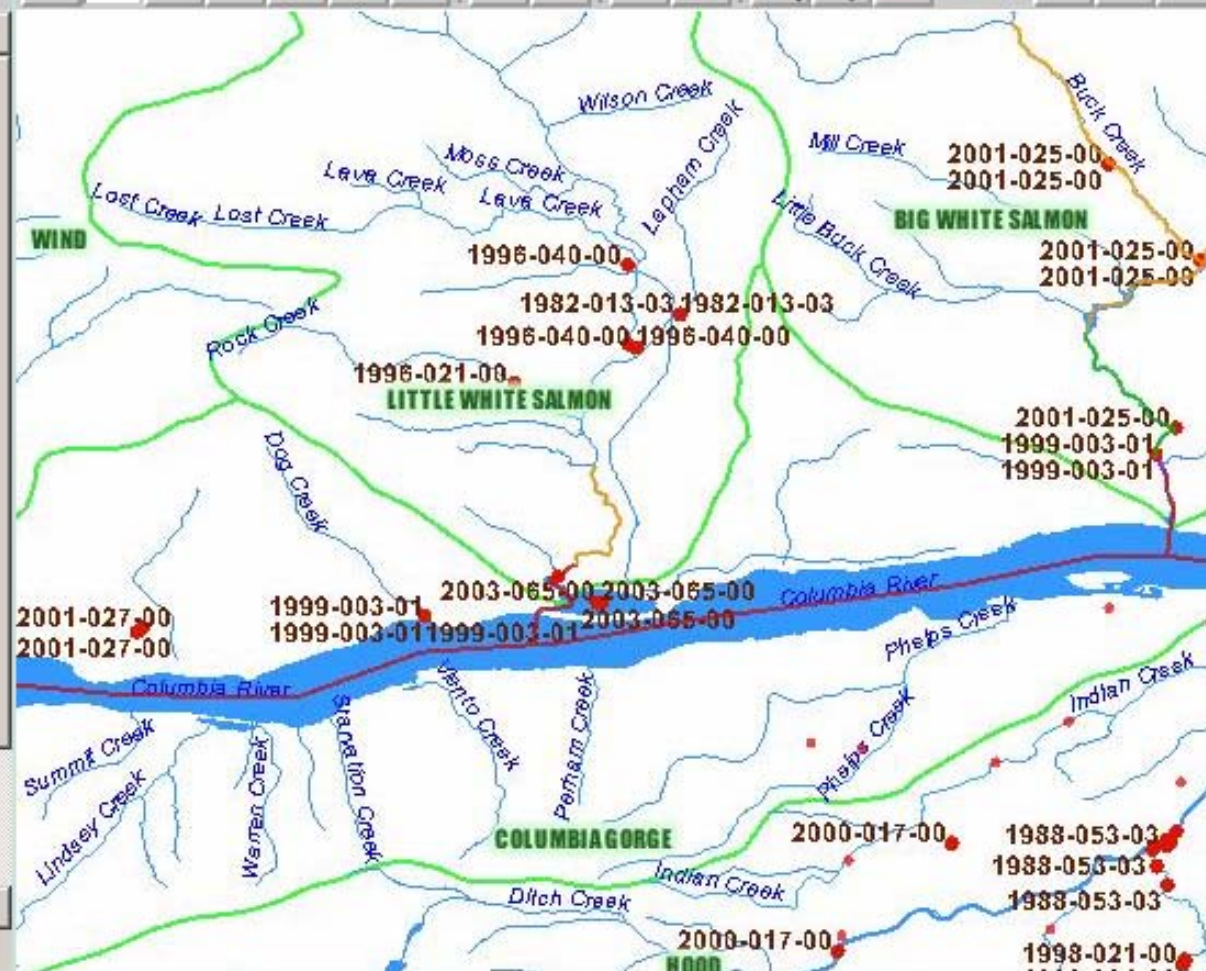








- ☒ Crit_Geoviewer
- ☒ PCSRF_PT
 - ☒ PCSRF_Objective
- ☒ Fish_Distribution_wm
- ☒ portalmap
 - ☒ Pisces Projects
 - ☐ Federal Dams
 - ☐ Non-Federal Dams
 - ☐ Proposed or Identified Hydrosites
 - ☒ Major Rivers 100k
 - ☒ Lakes 100k
 - ☒ Rivers 100k RRF
 - ☐ Columbia R. Basin
 - ☒ NPCC Subbasins
 - ☐ USGS HUCs 100k





MAP VIEWER

ADD SERVICES

Select data layer(s) to add.
Press Shift or Ctrl to select
multiple data layers.

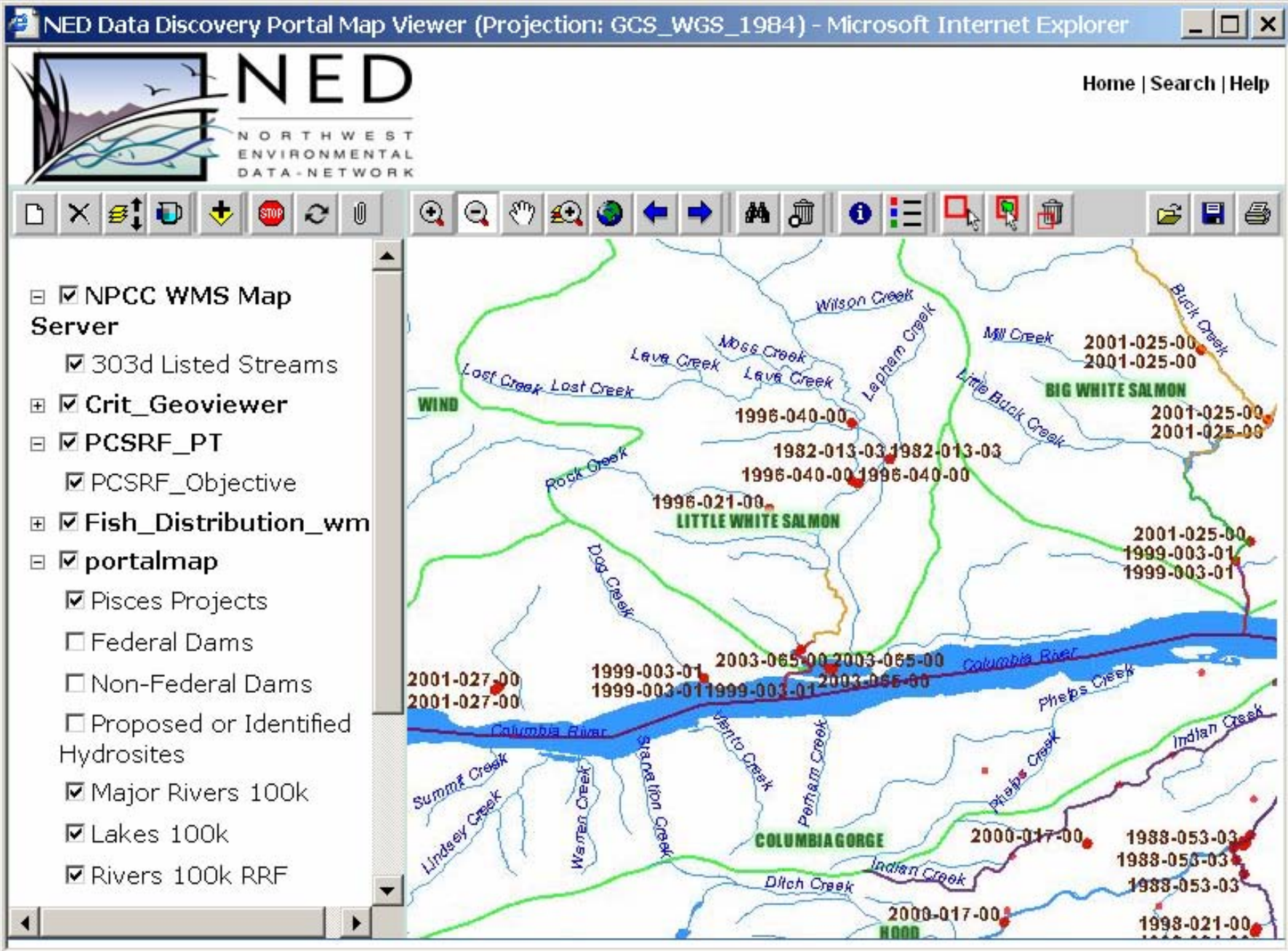
- 303d Listed Points
- 303d Listed Streams
- 303d Listed Waterbodies
- WA WRIA
- NW Hydropower Database
- Federal Dams
- Non-Federal Dams
- White Sturgeon
- MT Bull Trout
- ID Bull Trout
- OR Bull Trout
- WA Bull Trout

☐ Select All

← BACK

ADD

CLOSE



MAP VIEWER

ADD SERVICES

Select data layer(s) to add.
Press Shift or Ctrl to select
multiple data layers.

Willamette R. Winter Steelhead
NOAA Steelhead Populations
NOAA Chinook Populations
Anadromous ESUs
NPCC Provinces
Major Rivers
Columbia R. Basin
NPCC Subbasins
USGS HUCs 100k
Sixth Field Hucs
NHI CRB Wildlife Habitat
NHI CRB Historic Wildlife Habi...

☐ Select All

◀ BACK

ADD

CLOSE ▶

[Home](#) | [Search](#) | [Help](#)

☒ NPCC WMS Map Server

☒ Anadromous ESUs

☒ portalmap

☐ Pisces Projects

☐ Federal Dams

☐ Non-Federal Dams

☐ Proposed or Identified Hydrosites

☒ Major Lakes

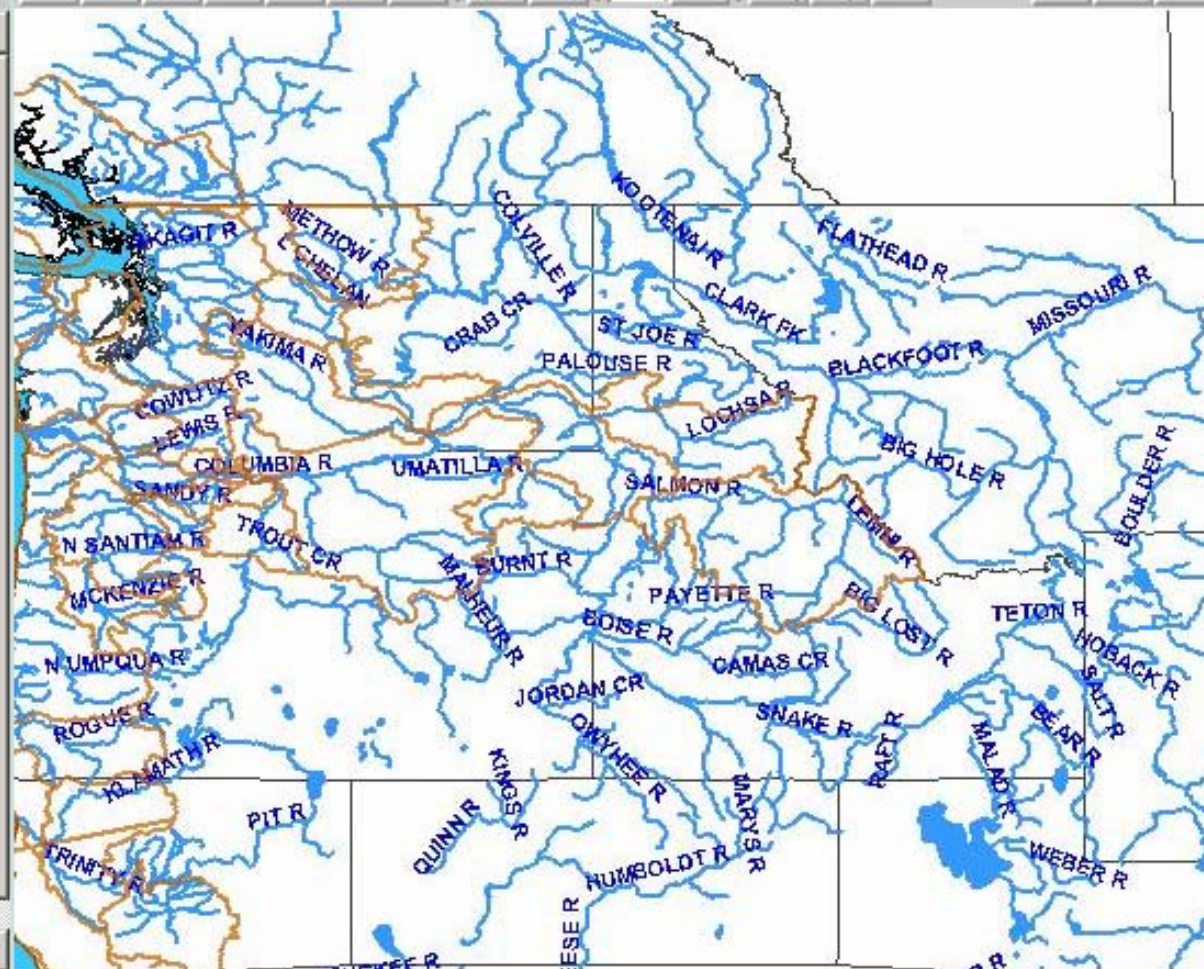
☒ Major Rivers

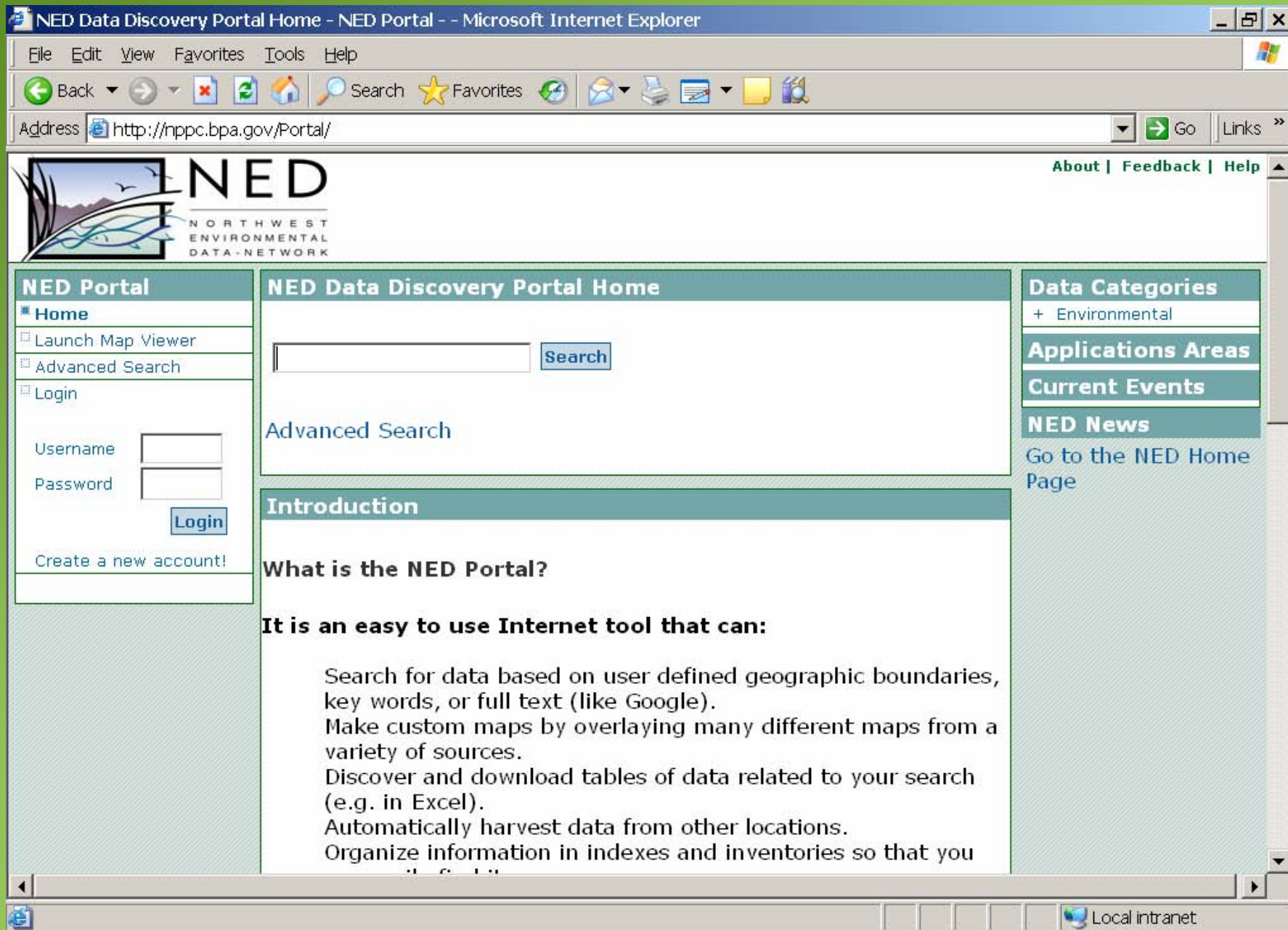
☐ Columbia R. Basin

☐ NPCC Subbasins

☒ NW Statesb

☐ NW Satellite 1km





Advanced Search - NED Portal - - Microsoft Internet Explorer

File Edit View Favorites Tools Help

Back Forward Stop Home Search Favorites Reload Print Mail News RSS Feeds

Address http://nppc.bpa.gov/Portal/ptk Go Links

NED
NORTHWEST
ENVIRONMENTAL
DATA-NETWORK

About | Feedback | Help

NED Portal

- Home
- Launch Map Viewer
- Advanced Search**
- Login

Username

Password

Login

Create a new account!


salmon

☒ Exact text search
☐ Any word
☐ All words

Where

☒ Anywhere
☐ Find A Place

☐ Data must fall completely inside area



What

Data Category:

Type/Format:

When (use 'YYYYMMDD' format)

☒ Anytime
☐ Time Period: From: To:
☐ Date Posted: After:


Microsoft PowerPoint - [NEDPortalCouncil2_07.ppt] Local intranet

Search Results - NED Portal - - Microsoft Internet Explorer

File Edit View Favorites Tools Help

Back Forward Stop Reload Home Search Favorites

Address <http://nppc.bpa.gov/Portal/DiscoveryServlet> Go Links »

 **NED**
NORTH WEST
ENVIRONMENTAL
DATA - NETWORK

About | Feedback | Help

NED Portal

- Home
- Launch Map Viewer
- Advanced Search
- Login

Username

Password

Login

Create a new account!

REFINE SEARCH

Records Found: 4

Search for:
"salmon"
"Any Category - West = -124.1, East = -109.58, North = 50.39, South = 40.41"
retrieved 4 Metadata Result records in 0.078 seconds.

Metadata Results

Content Title: Pacific NW Subbasin WMS Service

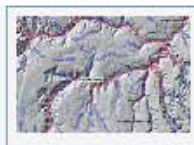
Publisher: Bonneville Power Administration

Provider Level: 1

Coverage Area: Columbia River Basin, Pacific Northwest, Washington, WA, Oregon, OR, Idaho, ID, Wyoming, WY

Content Type: Live data & maps

[View Map](#) [View Details](#) [View Metadata](#)



Content Title: NOAA Steelhead Populations

Publisher: Bonneville Power Administration

Coverage Area: Interior Columbia Basin, Columbia River, Snake River, Salmon River,


Done Local intranet

Details - NED Portal - - Microsoft Internet Explorer

File Edit View Favorites Tools Help

Back Forward Stop Home Search Favorites

Address <http://nppc.bpa.gov/Portal/DiscoveryServlet> Go Links »

 **NED**
NORTH WEST
ENVIRONMENTAL
DATA - NETWORK

[About](#) | [Feedback](#) | [Help](#)

NED Portal

- Home
- Launch Map Viewer
- Advanced Search
- Login

Username

Password

[Create a new account!](#)

Details

Content Citation

Content Title: NOAA Steelhead Populations

Content Type: Other documents

Publication Date: 2003

Content Description

Content Summary: This theme represents viable populations of ESU listed summer and winter steelhead salmon (*oncorhynchus mykiss*) within the interior Columbia Basin that have been shown to exhibit unique genetic, life history, morphological, and/or spatial characteristics within the NOAA - Fisheries defined recovery domains. Populations were developed as hydrological basins containing the core spawning and rearing areas. A wide variety of data was analyzed by the Technical Recovery Team in order to determine population independence. Areas of historical distribution and their associated bounding watersheds were also included in this dataset. However, this does NOT imply that they represent historical independent populations, as they are for general reference only!

Content Purpose: Populations were developed in order to provide a basis for analyzing spatial relationships between anadromous salmonid behavior and environmental features, and for cartographic production.

Time Period of Content

Beginning Date: 2003

Done

Local intranet



What the Portal is and what it can do

nppc.bpa.gov/Portal

- Bring in data from different web sites
- Overlay that data to make new maps
- See a current inventory of all data
- You can print, save, or email any of the maps you create or data that you find



Features of the NED Portal

- Cost effective -- builds upon and ties together comparable national and state-level efforts
- Meets National and International standards
- Uses off-the-shelf tool -- ESRI's Portal Toolkit -- which runs the nation's Portal at: www.geodata.gov
- Focused on Pacific Northwest natural resource issues
- One place to find all the data you are looking for

NED



NORTHWEST
ENVIRONMENTAL
DATA-NETWORK

Portal Demonstration

February 13 2007
Northwest Power and
Conservation Council

Tom Pansky, Energy Resource Specialist, BPA

NED Technology for Data Discovery and
Sharing Work Group





Background

- Meets regional fish, wildlife, and water data discovery and sharing needs identified by SAIC, NED, and the Columbia Basin Data Center proposal
- There is regional and national support for developing improved data sharing and discovery tools
- Allows for integration of other similar national, regional, state, and local efforts into a federated system



Progress

- Fall 2004 – Product research; NED Steering Committee review and software selection
- 2005 – Develop BPA Business Case; secure system development approvals; prep systems for install
- 2006 – Portal Toolkit installed at BPA; configuration and customization; web design; metadata and web map services loaded for pilot portal release



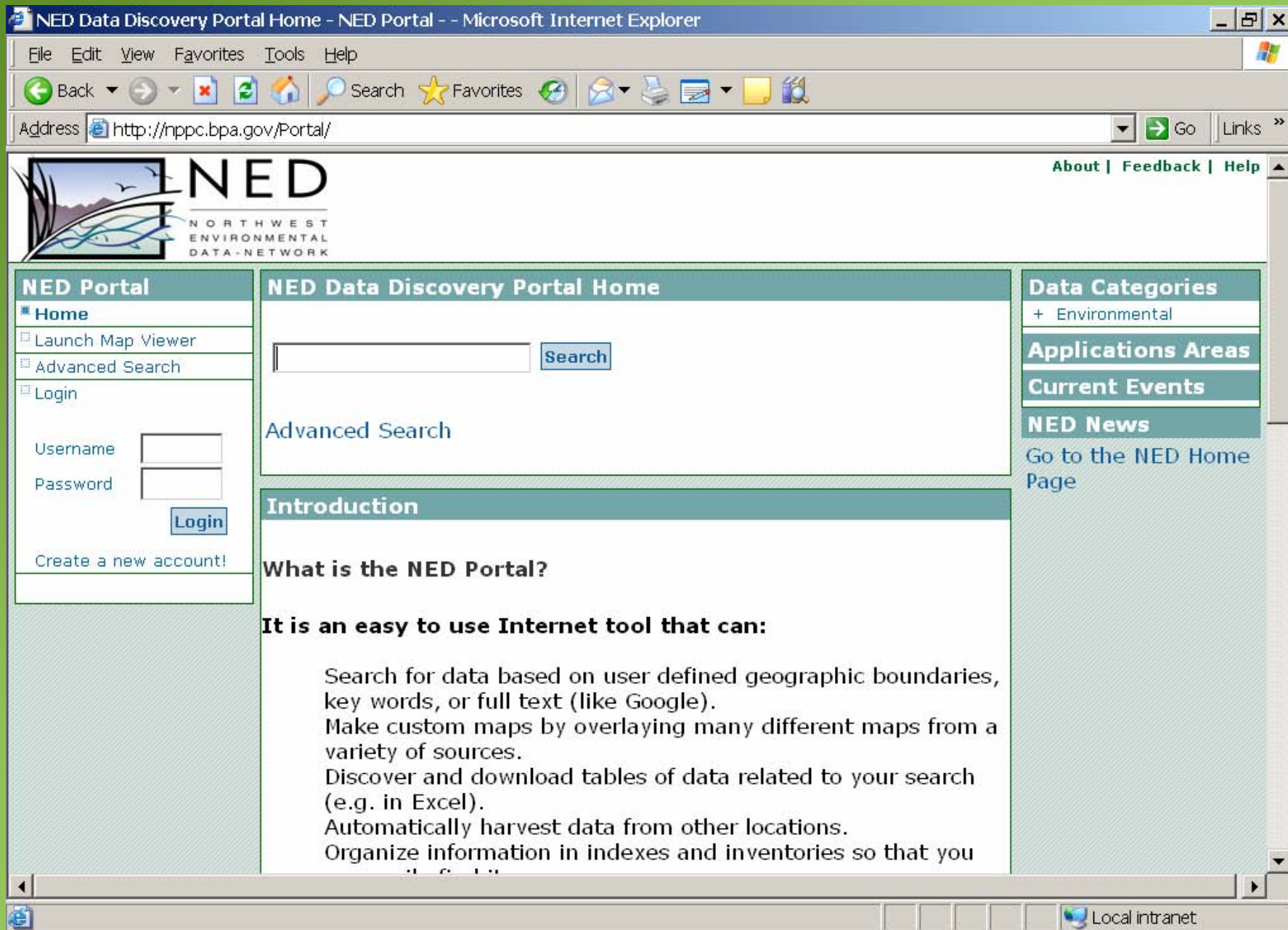
What it will take for the Portal to Succeed

- Metadata and data products developed and posted to (or harvested by) the Portal as a normal part of work
- Development of Operational and Business rules
- A Portal Administrator and Data Steward
- Assistance for those agencies or entities that cannot yet post their own data
- Executive support for the common use of basic standards and protocols for data quality and metadata



Conclusion

- Technology evolution, not revolution
- The Portal allows anyone on the Internet to discover and share data on fish, wildlife, and water
- Opportunity to leverage and integrate with both national and state efforts
- Adaptive management approach to information system development in support of NED goals
- We ask for your suggestions and support





- ☒ portalmap
- ☐ Pisces Projects
 - ☐ Federal Dams
 - ☐ Non-Federal Dams
 - ☐ Proposed or Identified Hydrosites
 - ☒ Major Lakes
 - ☒ Major Rivers
 - ☐ Columbia R. Basin
 - ☒ NPCC Subbasins
 - ☒ NW Statesb
 - ☐ NW Satellite 1km

