

Tom Karier
Chair
Washington

Frank L. Cassidy Jr.
"Larry"
Washington

Jim Kempton
Idaho

W. Bill Booth
Idaho



Joan M. Dukes
Vice-Chair
Oregon

Melinda S. Eden
Oregon

Bruce A. Measure
Montana

Rhonda Whiting
Montana

February 1, 2007

DISCUSSION MEMORANDUM

TO: Council Members

FROM: John Fazio, Senior Power System Analyst
Jim Ruff, Manager, Mainstem Passage and River Operations

SUBJECT: February 2007 Runoff Forecast and Power Supply Status

Purpose

The purpose of this presentation is to provide the Council with updated water supply forecasts for selected sites in the Columbia River Basin and assess potential impacts associated with the forecasts.

February 2007 Water Supply Forecasts

The NOAA Northwest River Forecast Center's official February water supply forecasts, along with an assessment of potential impacts, will be presented to the Council at its February 14, 2007 meeting in Portland. Unfortunately, the Northwest River Forecast Center will not have compiled and released its official February runoff forecasts for the Columbia River Basin prior to the February 1st packet deadline. Accordingly, an updated memo and slides will be emailed to Council members as soon as the final February water supply forecasts become available on February 8, 2007. Staff expects the February water supply forecasts to be lower than they were in January due to the below average precipitation across the basin this month.

Power Supply Status for 2007

Currently, the region has an annual energy surplus of about 2,400 average megawatts based on critical water conditions and assuming that generation from regional uncontracted independent power producers (IPP) is accessible to Northwest utilities. Variations in water supply (runoff volume) from now through the end of summer will not affect the adequacy of the power supply but may lead to small variations in electricity prices.

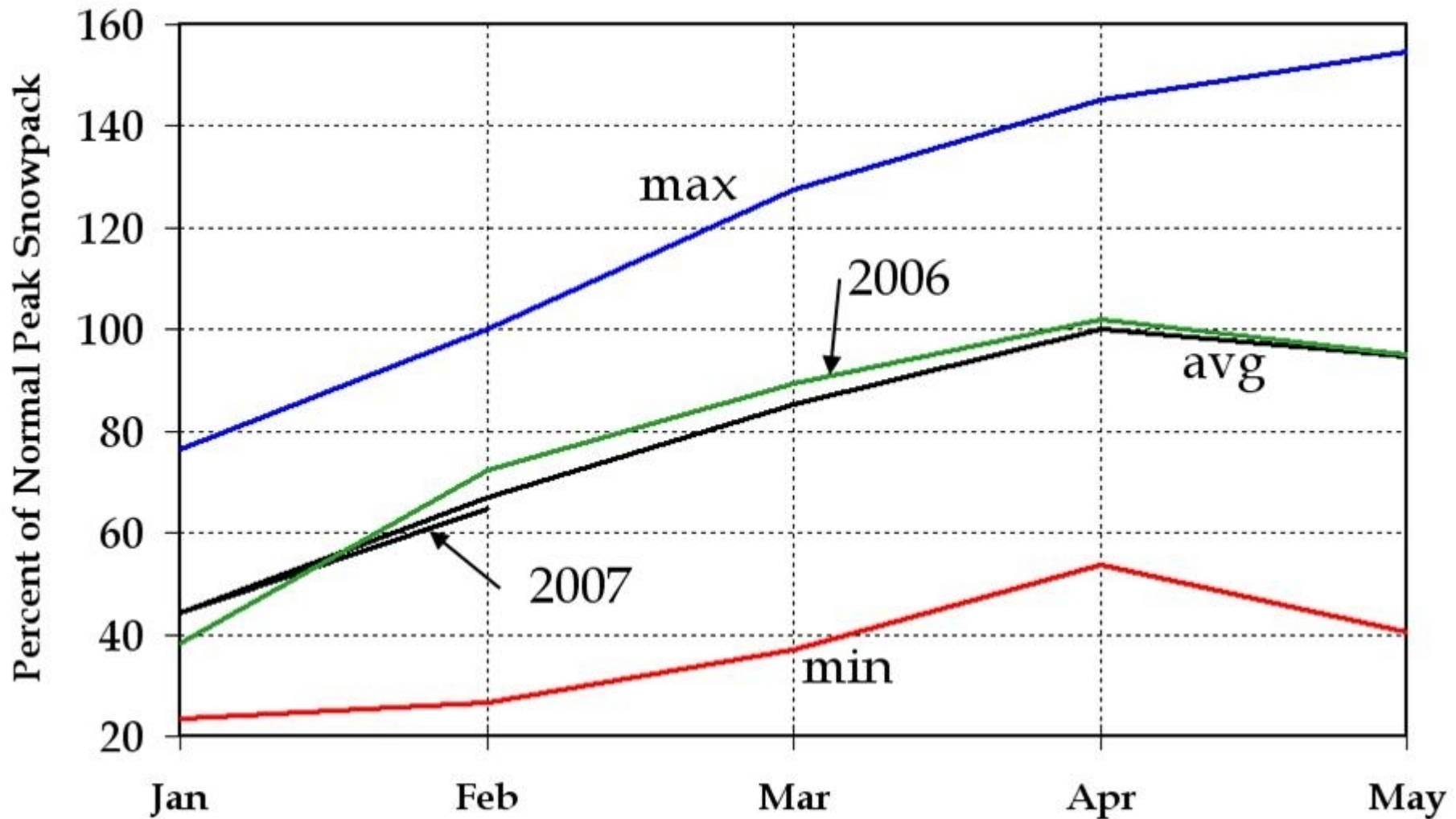
w:\jr\ww\2007\2-14-07 npcc runoff.doc

February Update 2007 Runoff and Power Supply Outlook

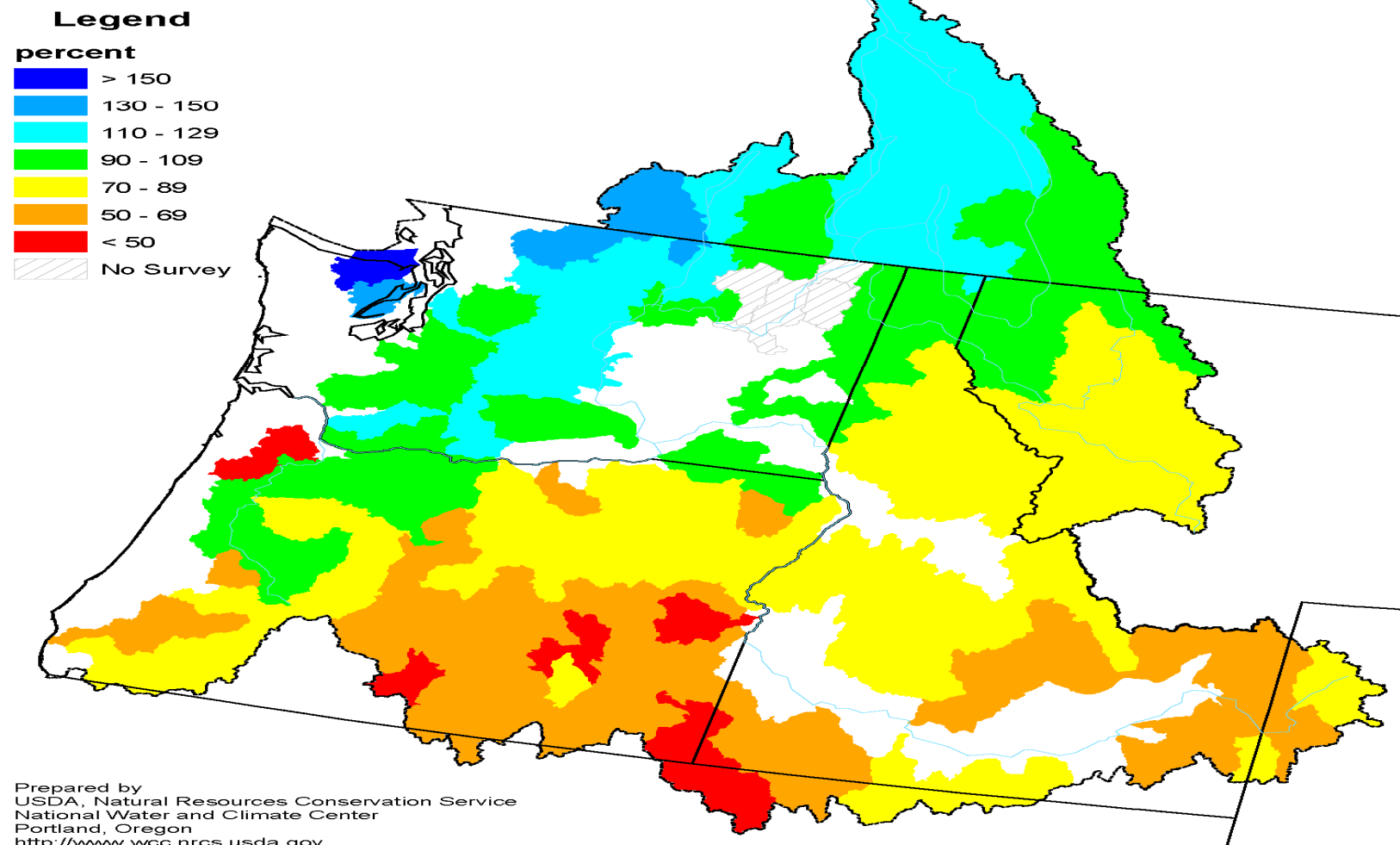


**NW Power and Conservation Council
February 14, 2007
Portland, Oregon**

Comparison of Snowpack Levels for the Columbia Basin



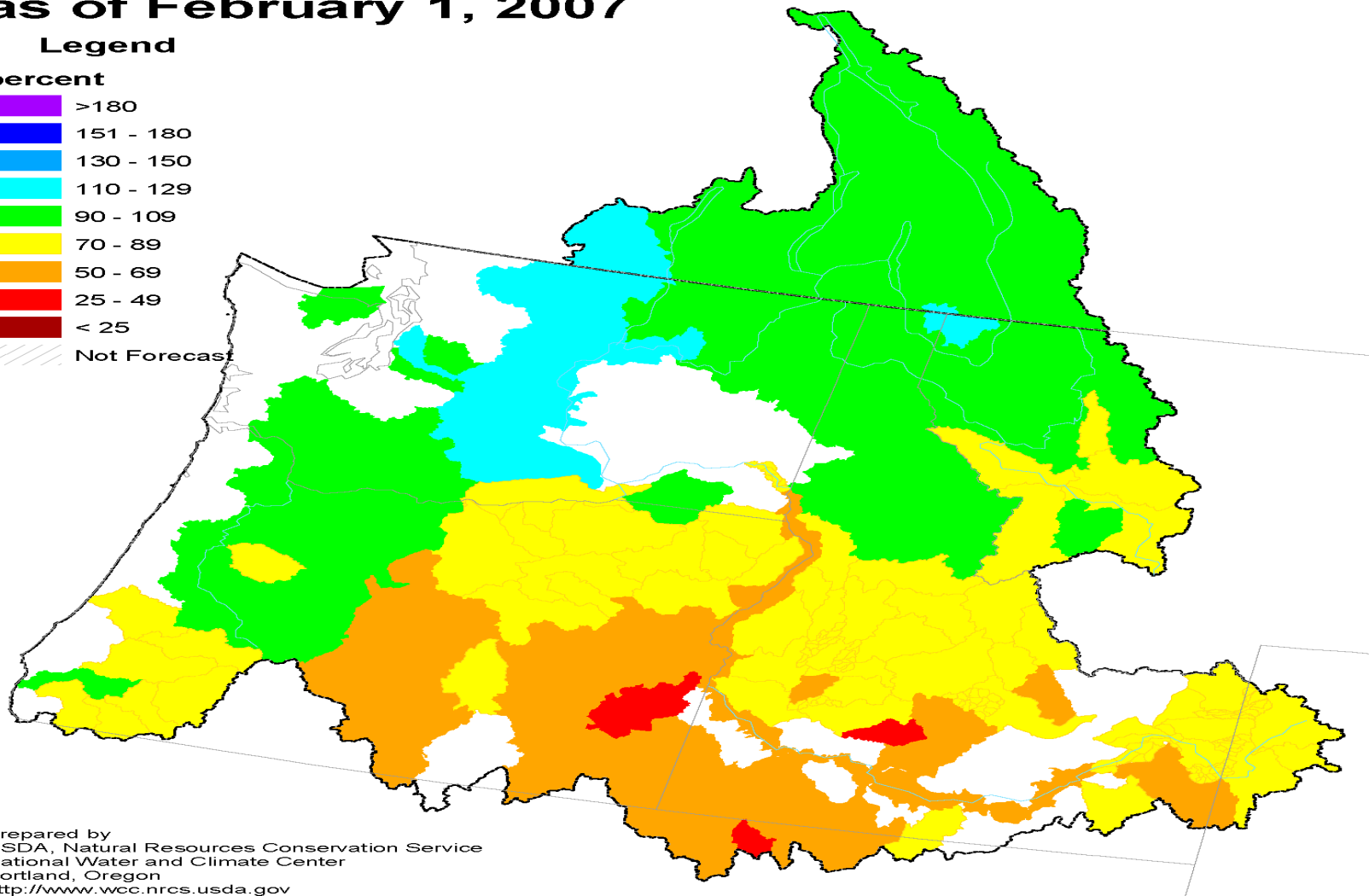
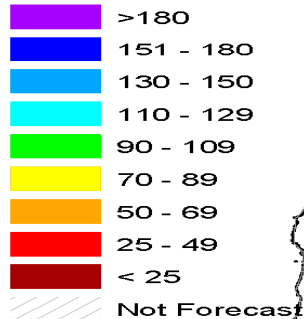
Columbia River Mountain Snowpack as of February 1, 2007



Pacific Northwest Spring and Summer Streamflow Forecasts as of February 1, 2007

Legend

percent



Prepared by
USDA, Natural Resources Conservation Service
National Water and Climate Center
Portland, Oregon
<http://www.wcc.nrcs.usda.gov>

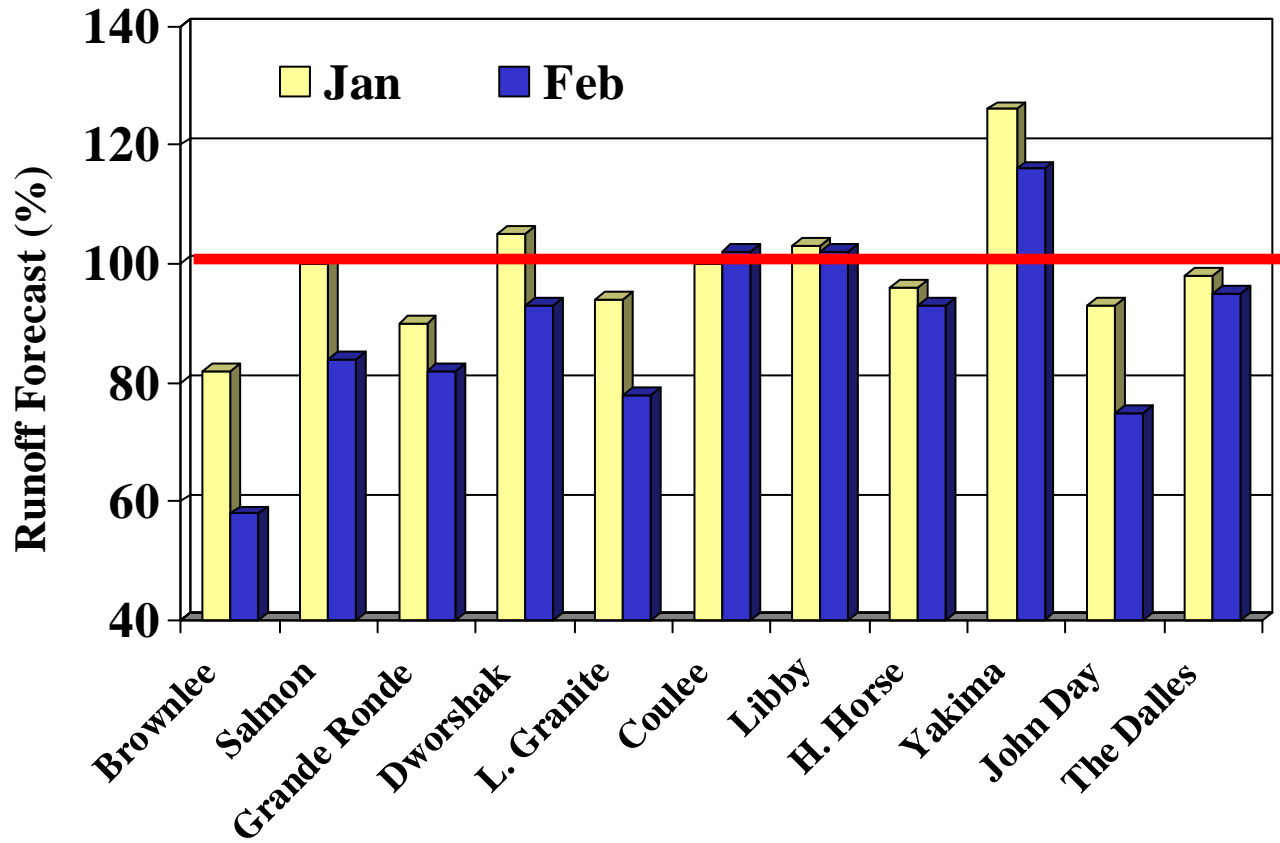
Snake River Runoff Forecasts

River and/or Station	Forecast Period	Forecast, in Maf	Percent of Avg.
Brownlee Reservoir inflow	April-July	3.6	58
Salmon R. at Whitebird	April-July	4.9	84
Grande Ronde R. at Troy	April-July	1.0	82
Dworshak Reservoir inflow	April-July	2.5	93
L. Granite Reservoir inflow	April-July	16.8	78

Columbia River Runoff Forecasts

River and/or Station	Forecast Period	Forecast, in Maf	Percent of Avg.
Columbia R. at Gr. Coulee	April-Sept.	65.4	102
Libby Reservoir inflow	April-Aug.	6.4	102
H. Horse Reservoir inflow	April-Sept.	2.0	93
Yakima R. near Parker	April-Sept.	2.2	116
John Day R at Service Ck.	April-Sept.	0.65	75
Columbia R. at The Dalles	April-Aug.	88.2	95

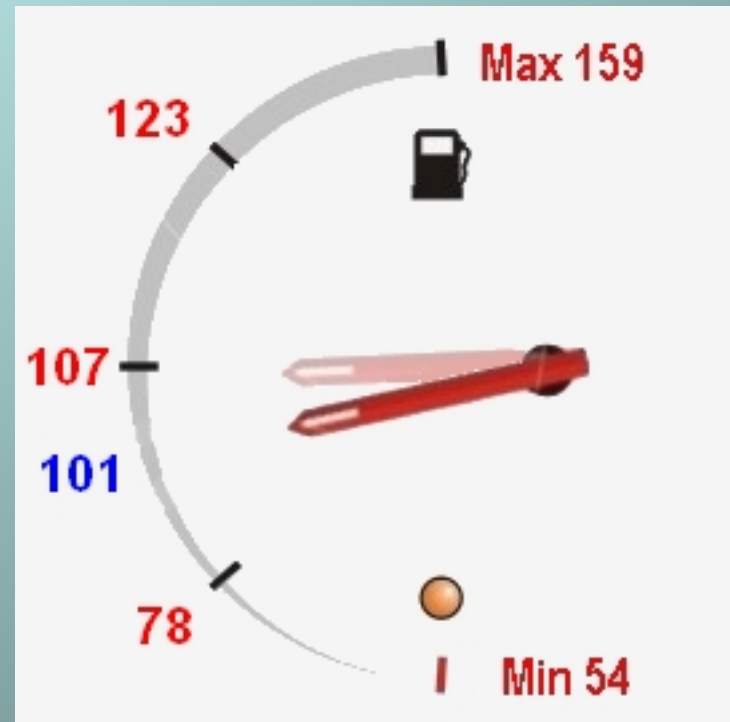
2007 Runoff Forecasts (relative to the 30-year averages)



1/08/07 **January-July** Runoff Forecast at The Dalles Dam (Millions of Acre Feet)

**101 Maf or
94 % of Average**

95% Confidence Range
From 78 to 123 Maf



Annual Hydro Generation (relative to the driest year)

