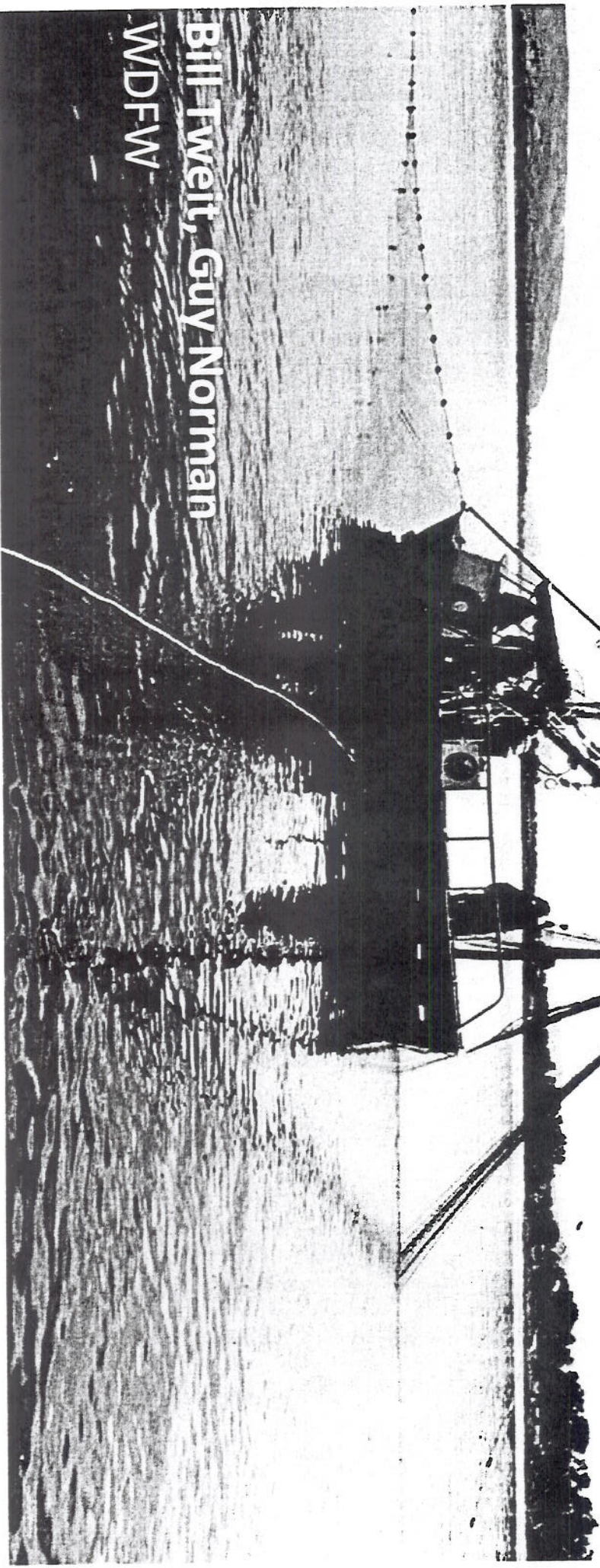




Washington  
Department of  
**FISH and  
WILDLIFE**

# **Washington Update on Selective Fishery Implementation: Alternative Gears and Barbless Hooks**

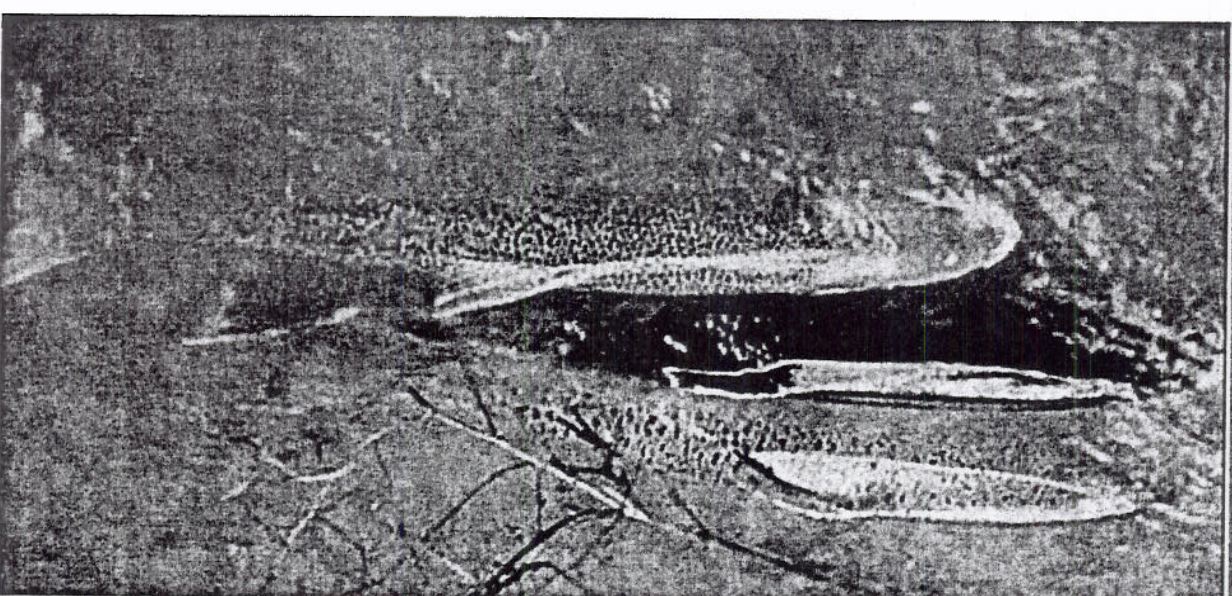
**Bill Tweit, Guy Norman  
WDFW**





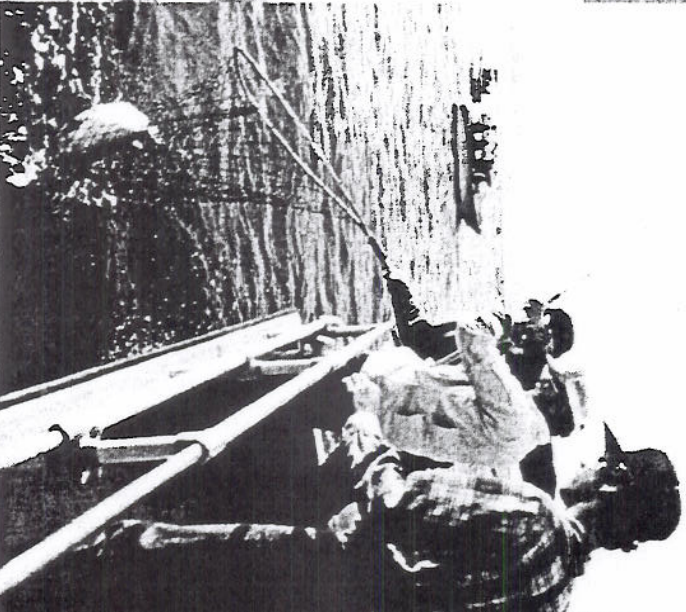
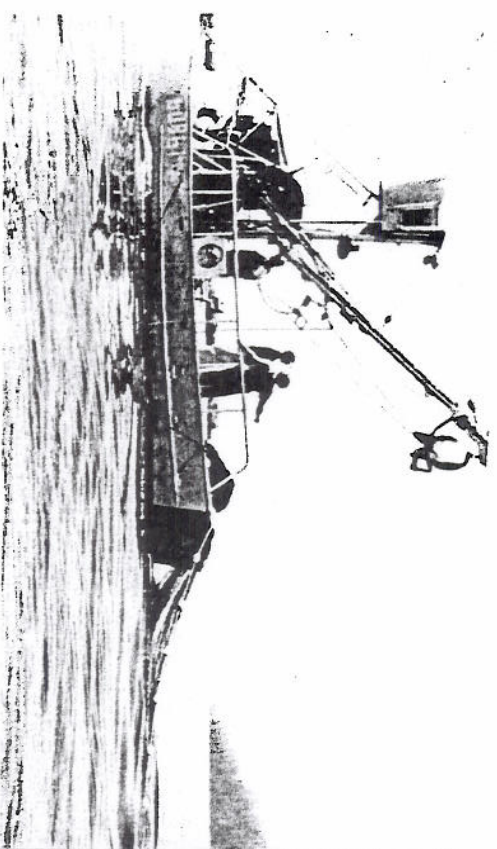
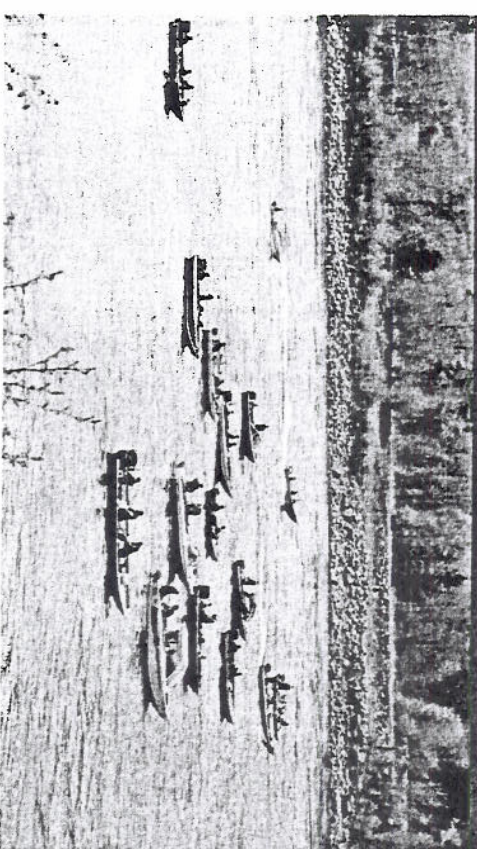
# WDFW Context

- Salmon Recovery Plans
- HSRG Review
- 21<sup>st</sup> Century Salmon and Steelhead Initiative
- WDFW Hatchery and Fishery Reform Policy





*"...Promote the conservation and recovery of wild salmon and steelhead and provide fishery related benefits..."*





# Managing Hatchery Fish

- Increase harvest of hatchery fish
- Install weirs to remove hatchery fish
- Decrease hatchery production





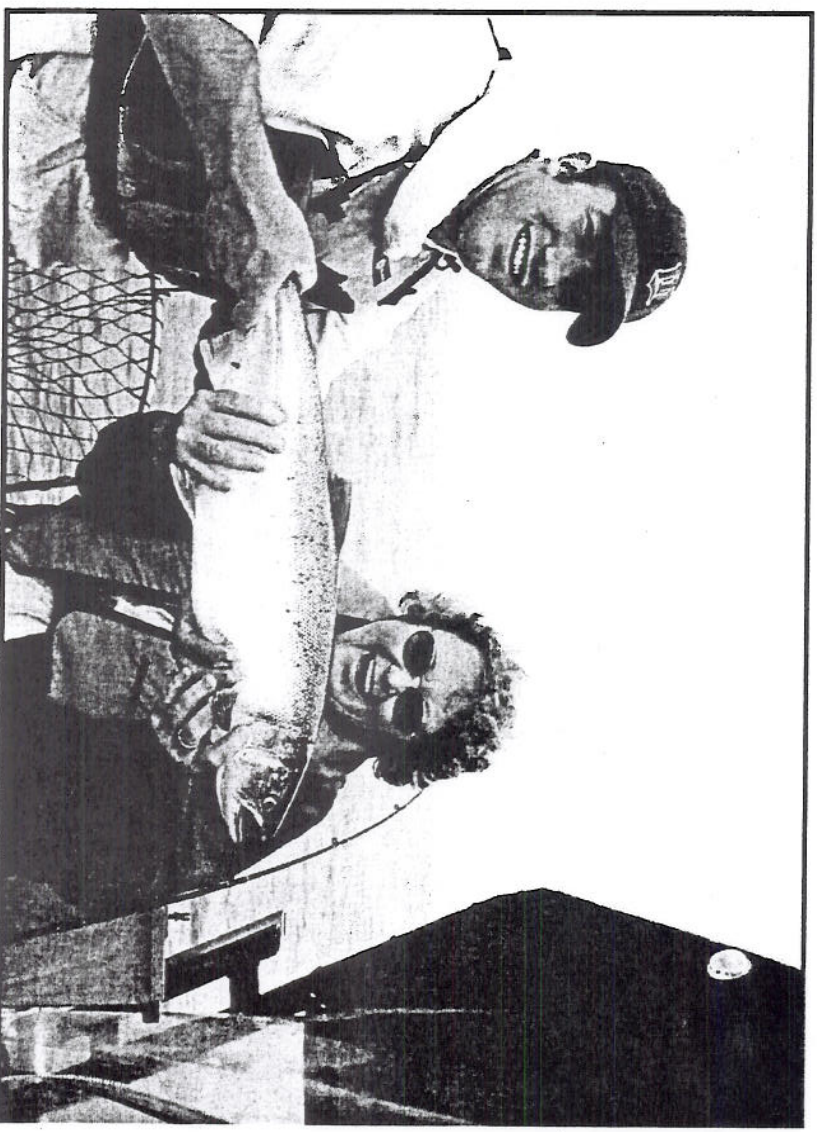
# Selective Fisheries

## What is a Selective Fishery?

- Mark-Selective: Harvest limited to retention of fin-marked hatchery fish
- T-A-G Selective: Fisheries using time, area, and/or gear regulations to minimize by-catch while targeting a specific species or stock

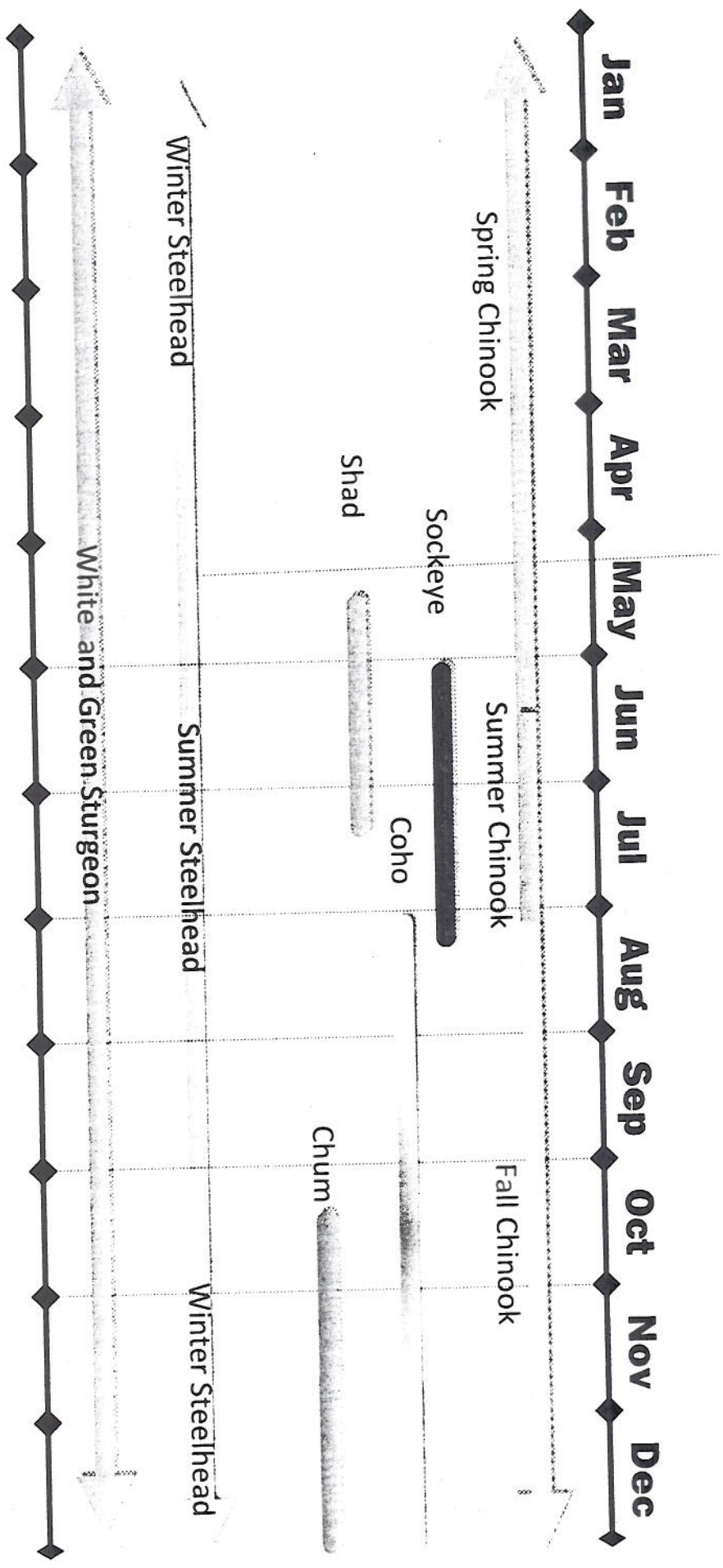
## Why Needed?

- ✓ Minimize take of “wild” fish to remain within total ESA and fishery-specific impact guidelines
- ✓ Minimize by-catch
- ✓ Maximize harvest of target stock



# Columbia River

## Annual presence of management species





# Time, Area, and Gear Selectivity

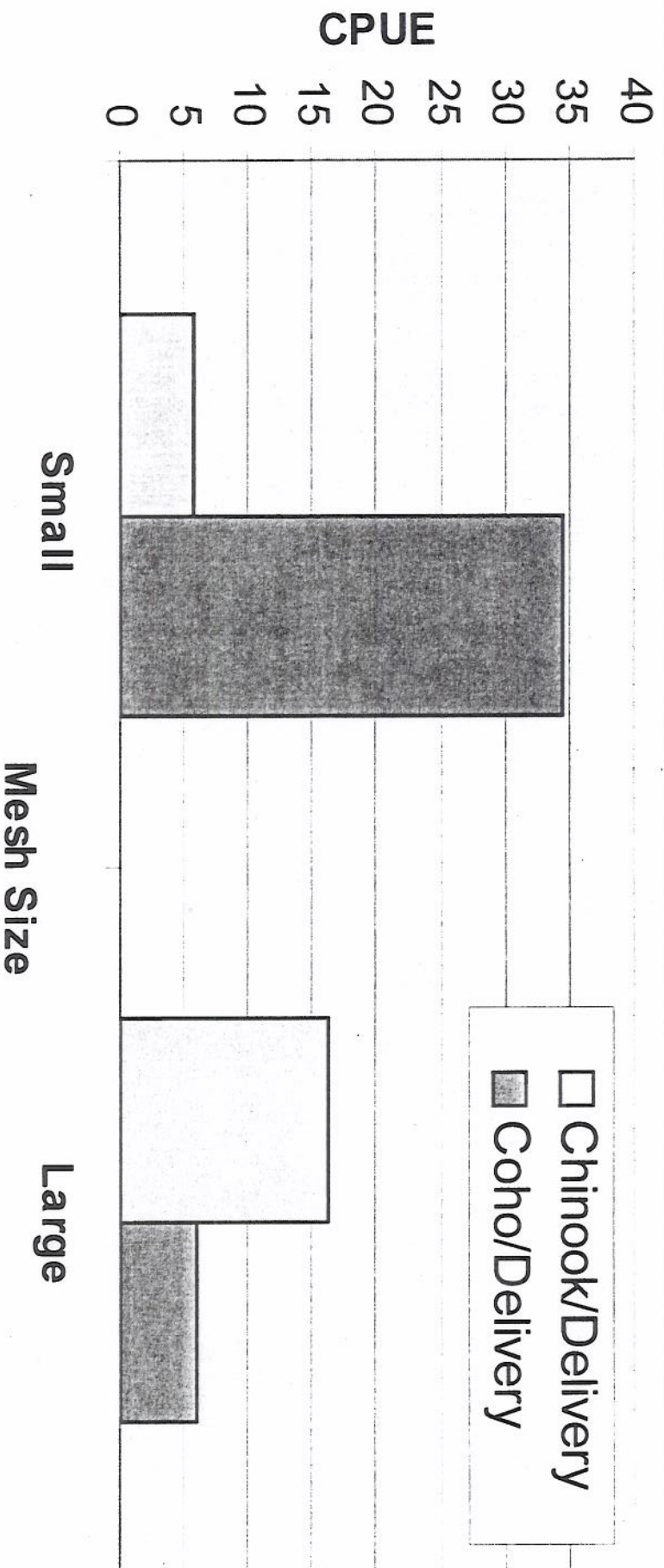
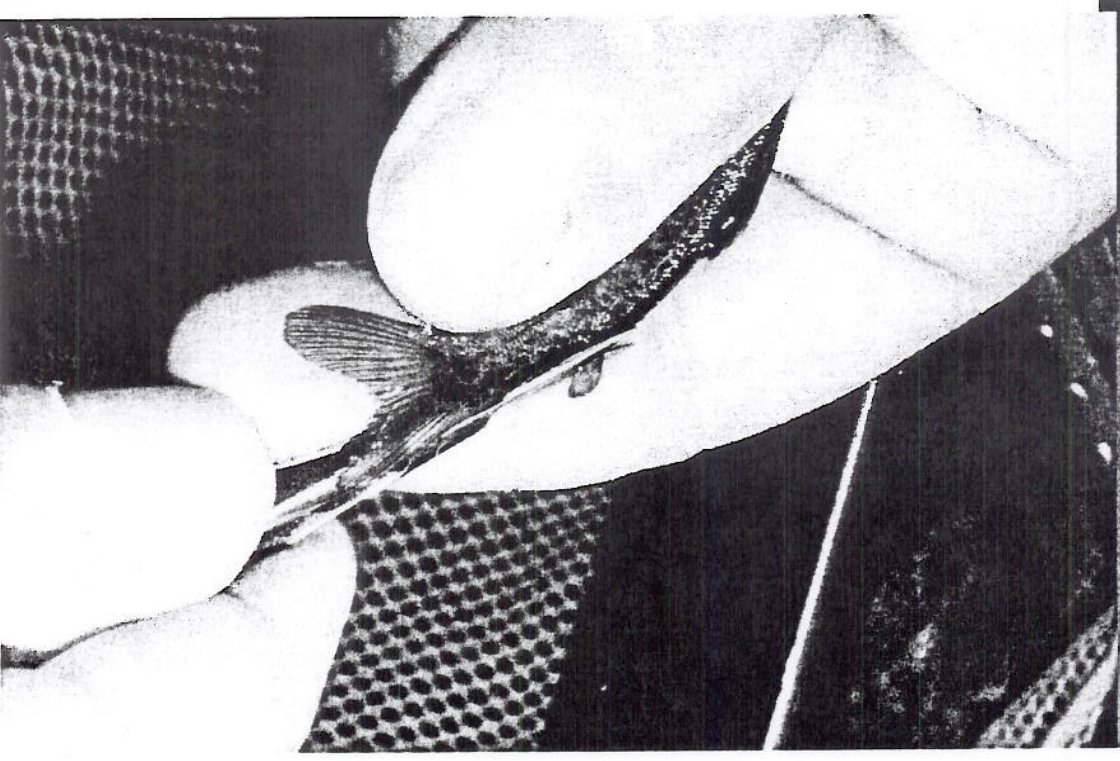


Figure X. Average catch per delivery by mesh size during mainstem late fall commercial fishing periods, 2006-2007



Reduce harvest of weak natural stocks,  
Increase harvest of hatchery fish

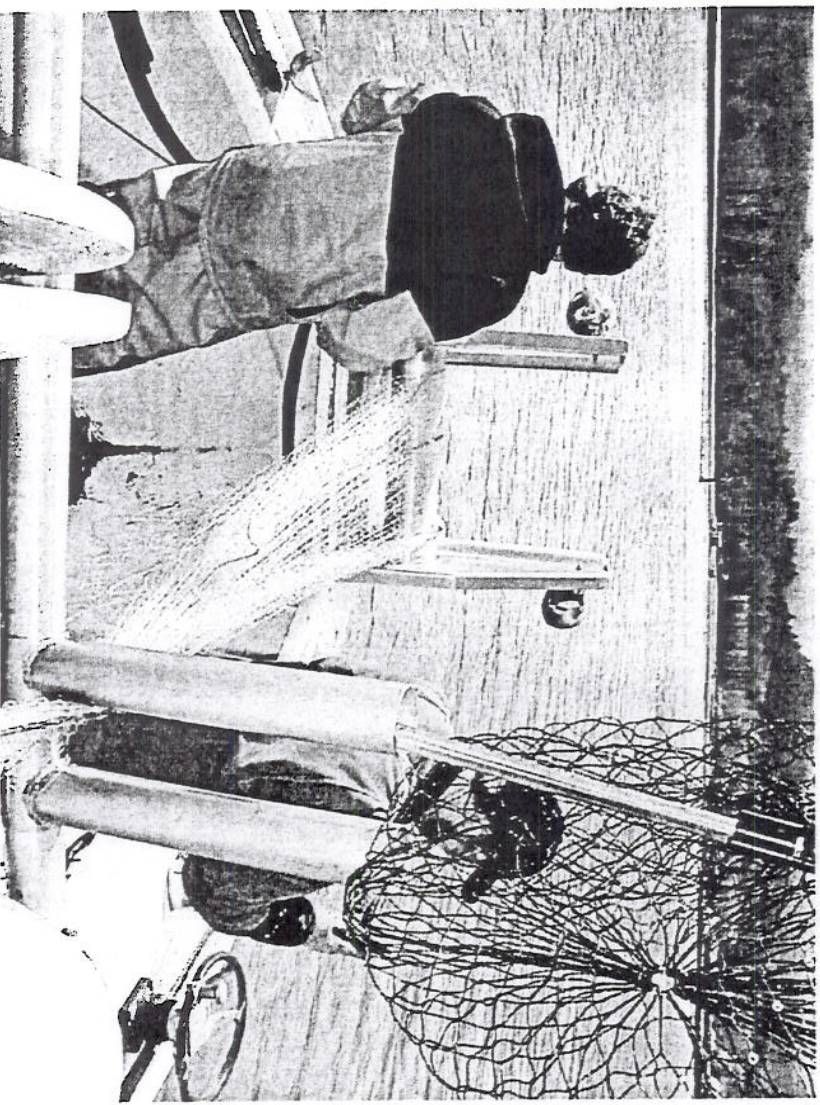
- Mass mark hatchery fish
- Implement mark-selective fisheries
  - Recreational
  - Commercial





# 2010 Commercial Fisheries

- Spring Chinook commercial – tangle nets and live boxes
- Fall pilot studies
- CCT project<sup>ji</sup>

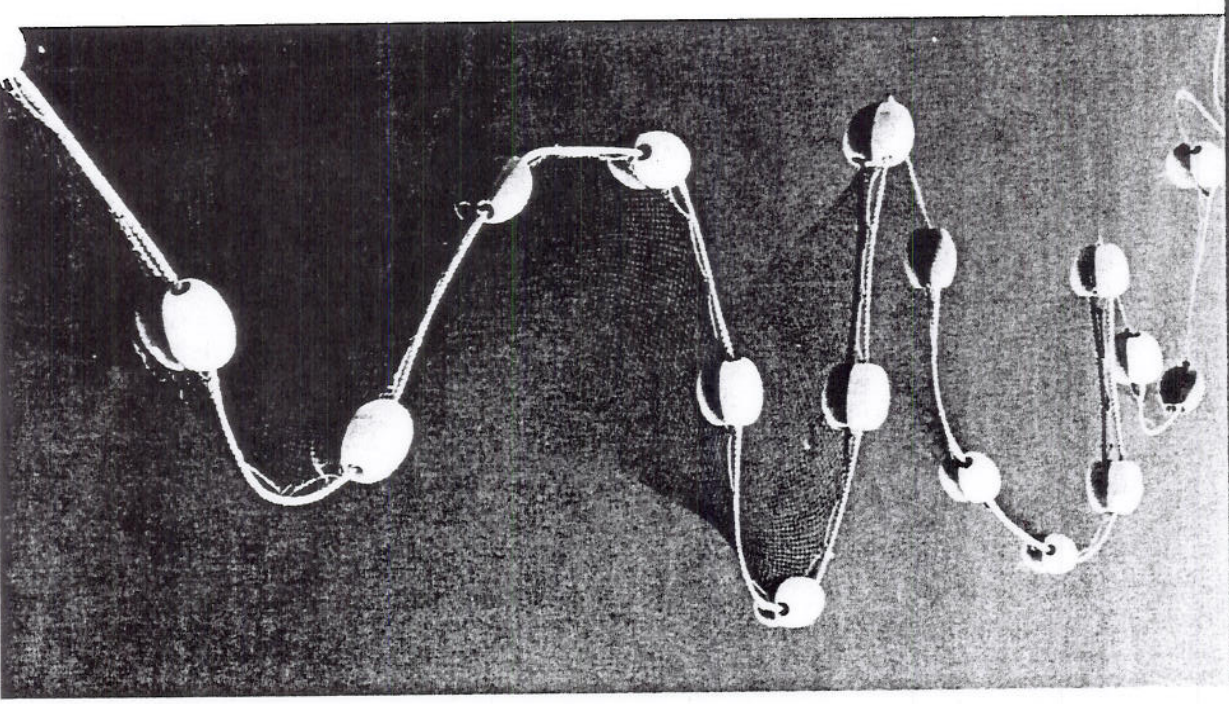




# Alternative Commercial Fishing Gears

## Goals

- Maximize harvest of hatchery fish and survival rate of wild fish
- Support stable and economically viable commercial fisheries





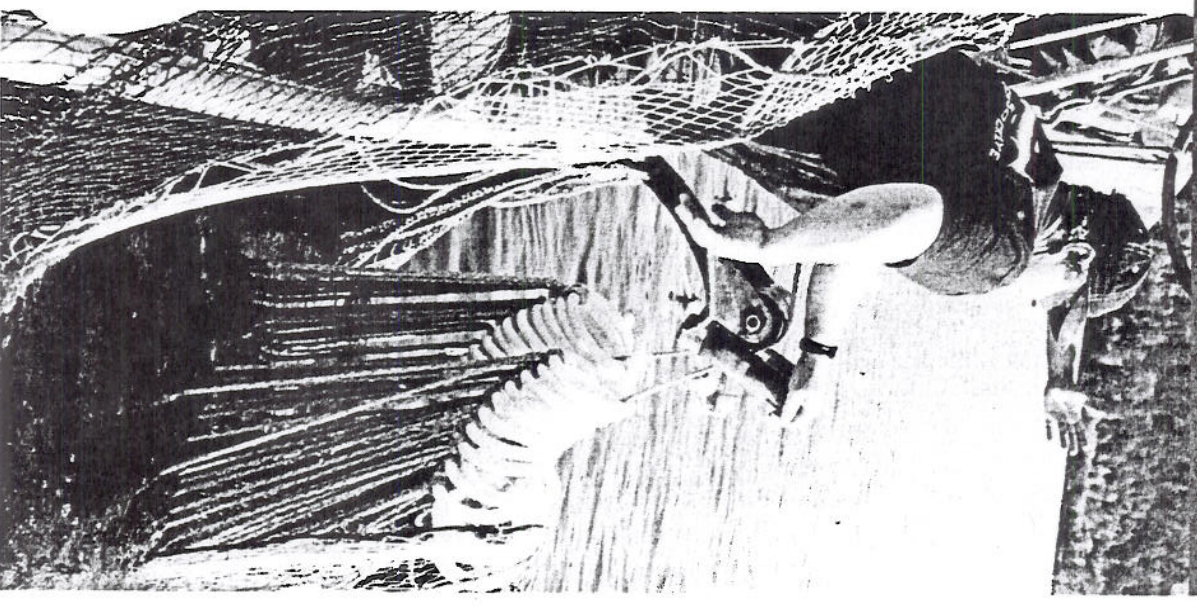
# 2009 Pilot

## Gears Tested

- Purse Seine
- Beach Seine
- Trap Net

## Time Frame

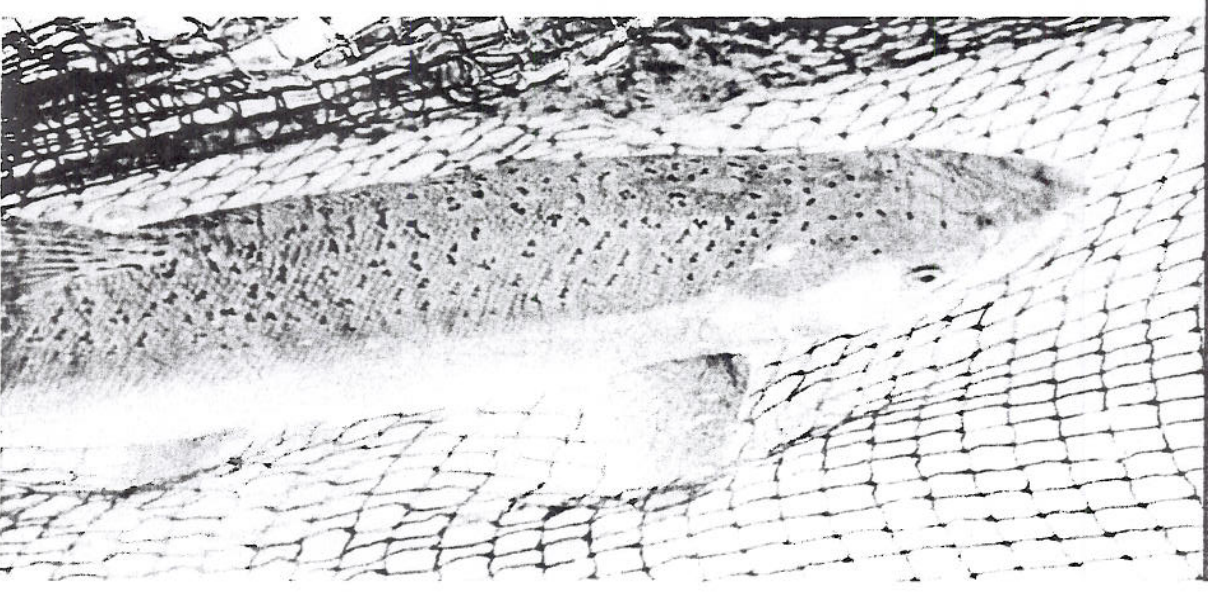
- Late Aug. through mid-Sept.
- Early to late October





# 2010 Project

- Expand effort:
  - More fishers
  - More areas
  - More days
- Short-term mortality testing
- One year funding of \$1.975 million from Mitchell Act





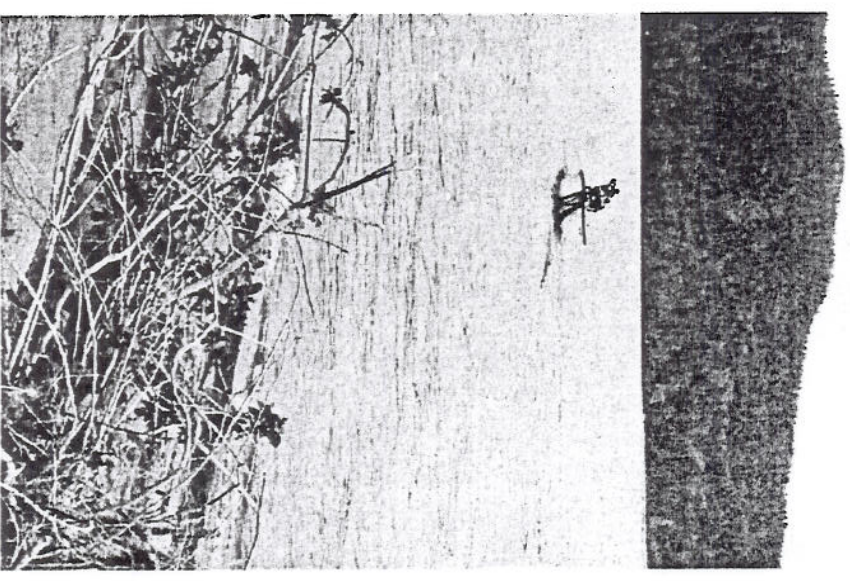
# 2010 Project

## Gear:<sup>15</sup>

- Purse Seines (6)
- Beach seines (5)
- Trap Nets (2)

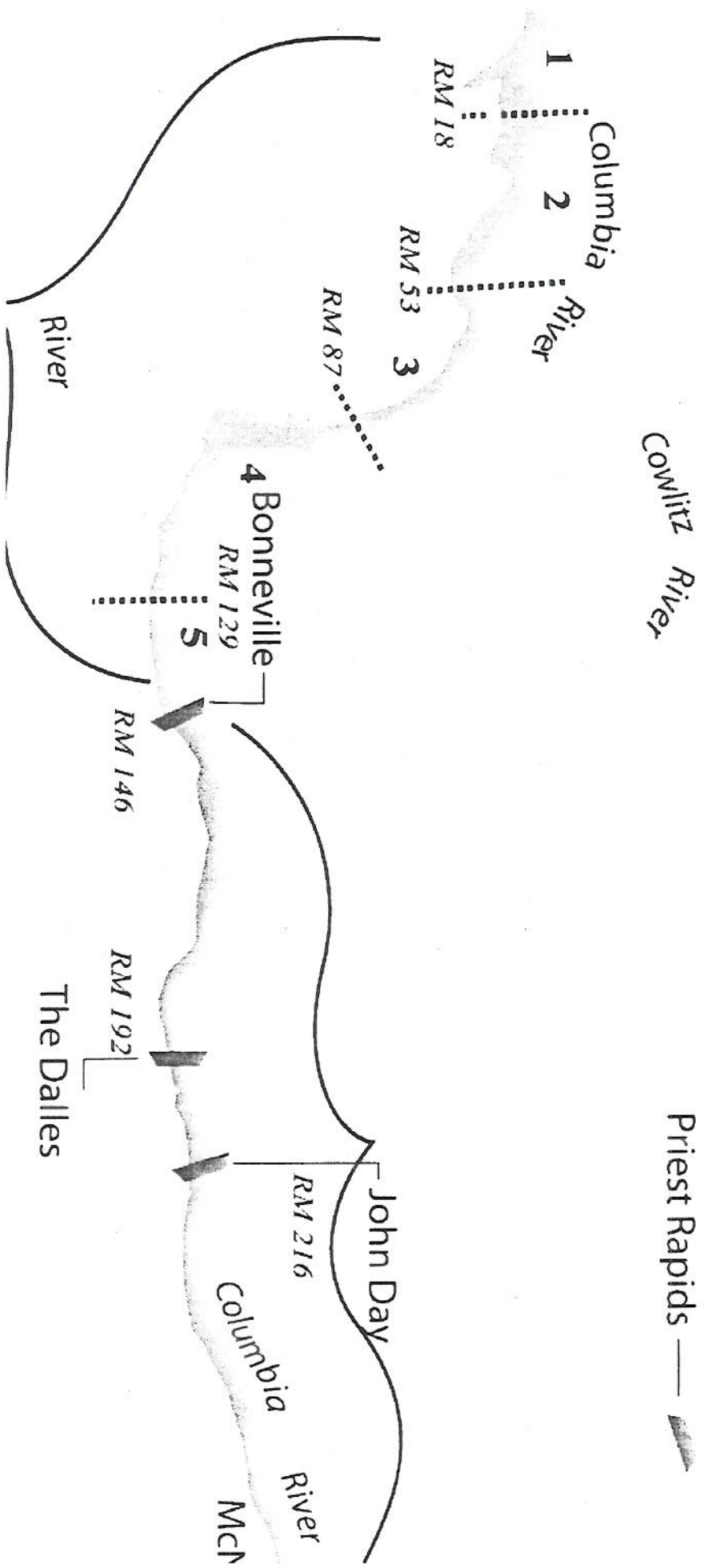
Species: Chinook and  
Coho

- When:
- 30 days per fisher
  - Mid Aug. through late Oct.





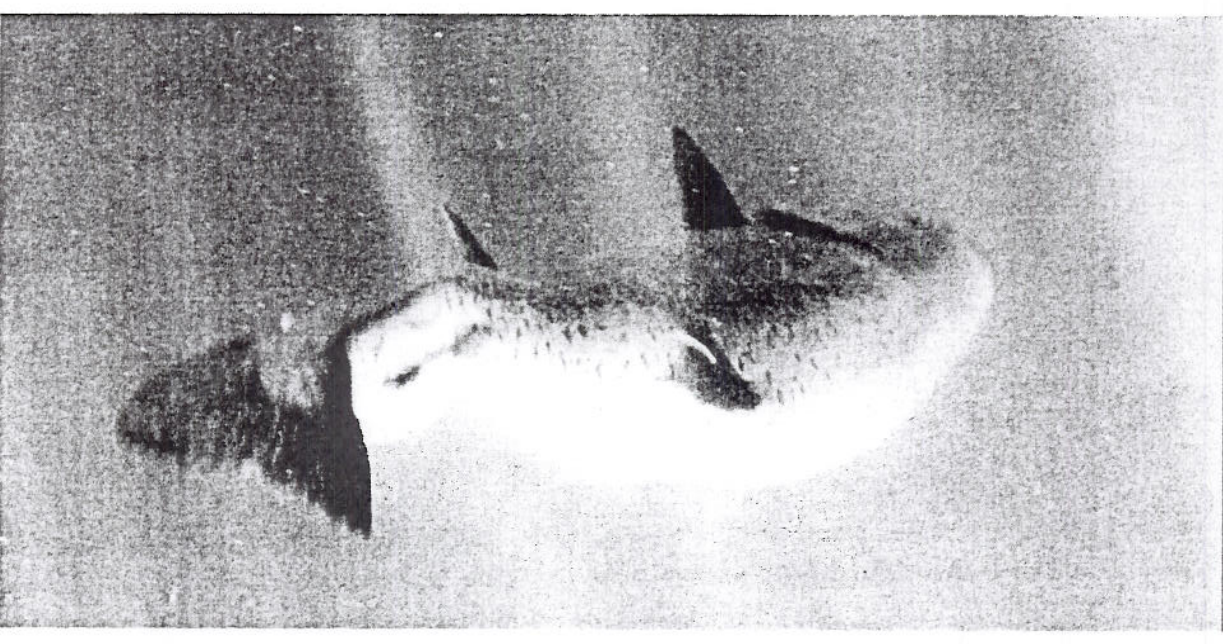
# Location of Fishers





# 2010 Project Objectives

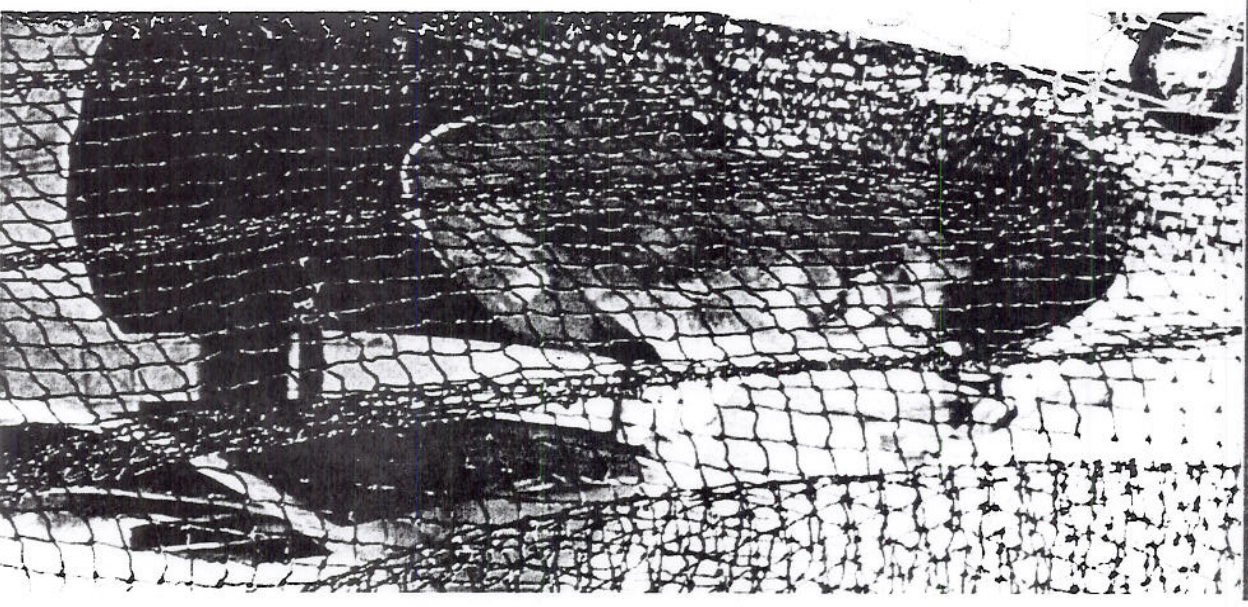
- Prove we can catch fish
- Prove we can catch hatchery fish and protect wild fish
- Evaluate short term mortality
  - 24-48 hour mortality
- Get a sense of how many wild and upriver Chinook we will encounter





# Commercial - Next Steps

- Catch Fish!
- Design 2011 project
- Long-term Mortality study
- Implementation plan
  - Investment, marketing, equipping, location, gear types





# 2010 Recreational Fisheries

## Mark Selective

### Columbia River:

- Spring Chinook,
- Summer Chinook,
- Coho and Steelhead

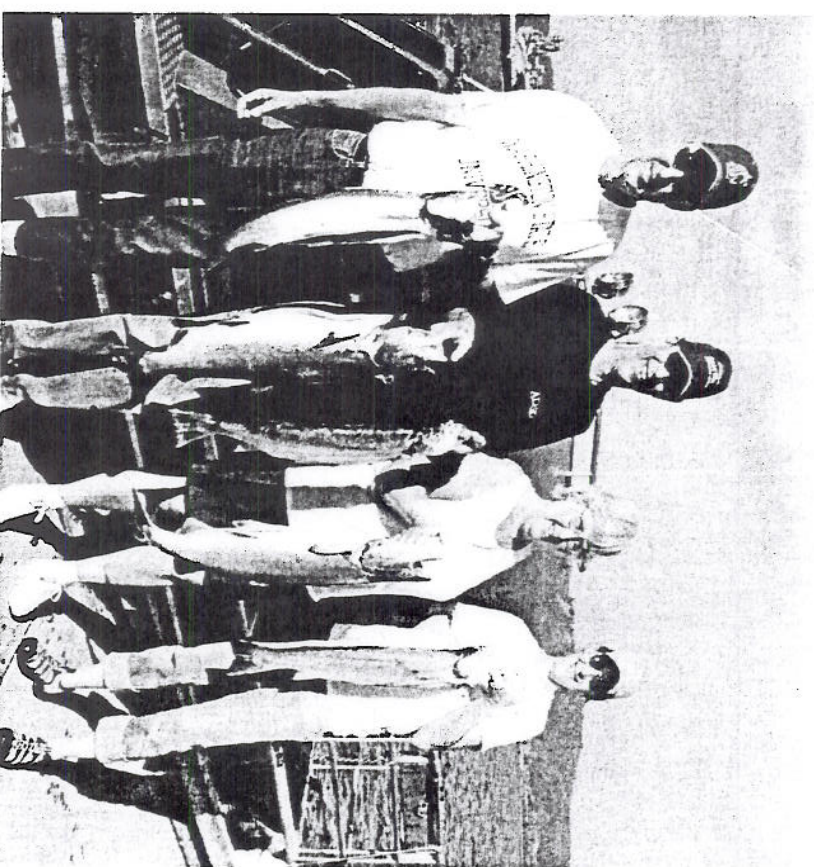
### Ocean:

- Pilot Chinook June 12-30

- coho

### Puget Sound

j6

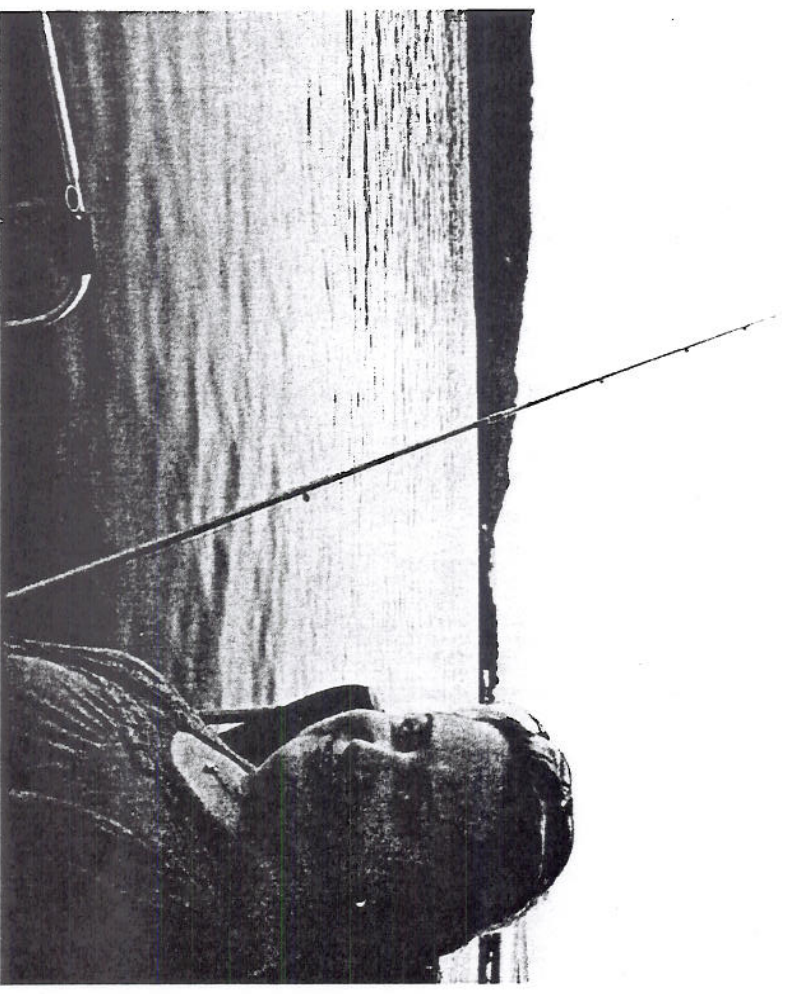




# Selective Fishery Rules

18

- Selective gear – barbless<sup>17</sup> hooks, knotless nets
- Handling rules – “unlawful to remove from the water”
- Promoting responsible fishing behavior – Outreach and education efforts, Statewide Release Awareness Day

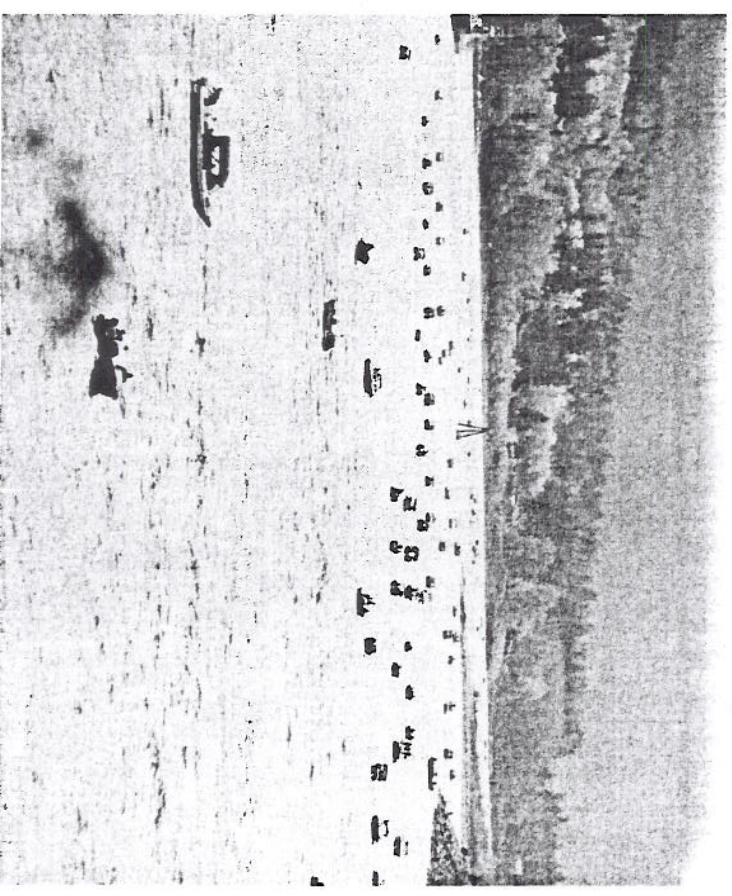




# Barbless Hook Rules

j11

- New for 2011, barbless<sup>j10</sup> hooks only for salmon and steelhead from the mouth upstream to McNary
- Not concurrent with Oregon rules, states will work to reconcile.





# Monitoring Selective Fisheries

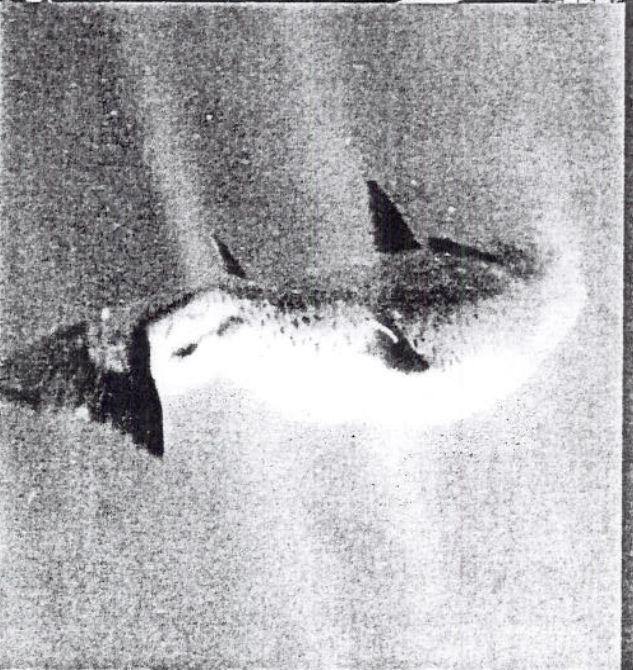
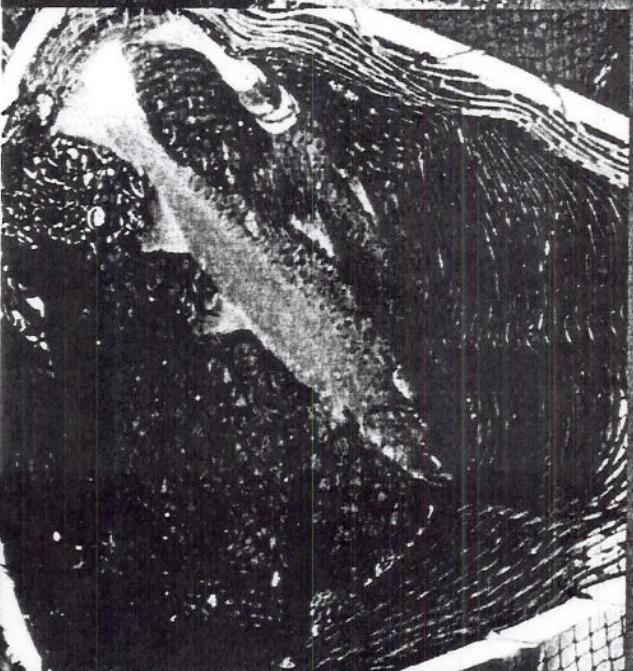
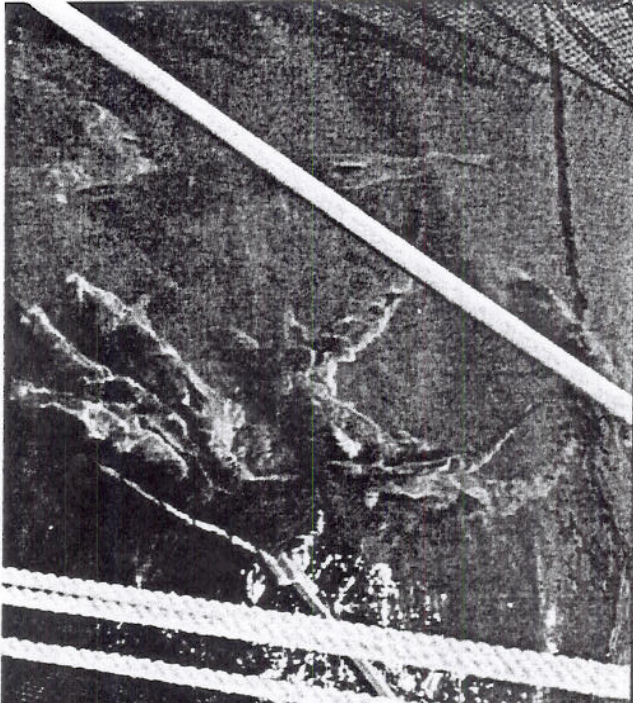
- Columbia River  
Salmon/Steelhead  
Endorsement

- Increased Monitoring  
Requirements, both  
released fish and kept  
fish
- Increased Enforcement





# Questions?



WDFW 2011-13 Outdoor



