

Henry Lorenzen
Chair
Oregon

Bill Bradbury
Oregon

Phil Rockefeller
Washington

Tom Karier
Washington



Northwest Power and Conservation Council

W. Bill Booth
Vice Chair
Idaho

James Yost
Idaho

Pat Smith
Montana

Jennifer Anders
Montana

June 7, 2016

MEMORANDUM

TO: Fish and Wildlife Committee

FROM: Lynn Palensky

SUBJECT: Wildlife Program and Project Review Update

BACKGROUND:

Presenters: Lynn Palensky, Mark Fritsch and from Bonneville: Dorie Welch, Hannah Dondy-Kaplan and Sandra Fife

Summary: The last wildlife category review was completed in 2009. Since that time, the Council approved the 2014 Fish and Wildlife Program, Bonneville staff have worked on several aspects of their overall lands program that include wildlife projects, and Council staff have worked on a path forward for the next review. In October 2015, staff proposed that path forward to the Fish and Wildlife Committee, and part of that involves assessment of current implementation of wildlife measures in the program and issues identified in previous wildlife reviews.

This presentation (Attachment 1) will be given by Bonneville's lands program and wildlife policy staff on their program accomplishments since the last review to include:

- Deskbook
- Land Management Plans
- Stewardship funding
- Compliance monitoring (asset management)

Council staff will set the context with a quick recap of the last review and next steps for the 2016-2017 review (Attachment 2).

Relevance: Implementation of the wildlife elements of the fish and wildlife program. The Council's current funding recommendations expired a year ago at the end of FY 2014.

Workplan: The work is being tracked in the Division's annual work plan as a high-priority task and in the Council's Annual Work Plan for 2015.

Background: During the last wildlife project review process in July 2009, FY 2010-2014, the Council recommended continued funding for 34 projects. The Council's recommendation included expectations to maintain the habitat units previously acquired in the program, to work toward full mitigation, and to improve the coordination and efficiency of monitoring wildlife habitats.

The programmatic issues resulting from the 2009 wildlife review are summarized as follows.

1. Habitat Evaluation Procedure (HEP)
 - A. The interaction between wildlife crediting and monitoring
 - B. HEP participation funding
2. Prospects for a regional RM&E approach
3. Ongoing wildlife crediting issues
4. Management Plans
 - A. General (standardized format, accessibility)
 - B. Multiple uses of wildlife conservation lands (agriculture, grazing, including income-generating activities)
5. Weed control - regional plans and best management practices
6. Equipment/facilities purchase and replacement

The 2014 Program for wildlife calls for (*paraphrased*):

- Complete operational loss assessments
- Keep acquiring and enhancing land to fully mitigate for losses
- Monitor and evaluate species response to habitat
- Complete loss mitigation agreements for remaining construction and inundation losses by 2016
- Finalize management plans for all parcels that do not otherwise provide long-term maintenance and sustaining minimum credited habitat values.
- Provide for timely ongoing operation and maintenance costs associated with existing investments (Appendix P)

Staff recommended steps for moving forward

The steps outlined below were developed last year and focus on how program measures are being implemented and how issues identified in the previous wildlife reviews are being addressed. Bonneville staff have made significant progress in some areas and we continue to work together in preparation for the next wildlife review.

Initial Phase

- 1) Inventory project portfolio for:
 - settlement agreements (complete and planned); and
 - outstanding/outdated management plans and link to O&M strategic Plan
- 2) Complete Management plans
 - Finalize standardized template. Work with Bonneville and ISRP to finalize by end of 2016.
 - Ask sponsors to complete or update management plans where needed.
- 3) Standardize Annual Report Format
Finalize template. Work with Bonneville and ISRP to finalize by end of 2016. (Links to management plan for adaptive management, accomplishments to date, and unforeseen circumstances).
- 4) Inventory Operational loss assessments: Where do they exist, where are they in progress, where are they still to be developed? Identify issues that prevent us from completing loss assessments. How would operational loss mitigation factor into construction and inundation loss settlements? Potential ties to fish mitigation?
- 5) *Complete loss mitigation agreements for remaining construction and inundation losses by end of 2016* (program language). If these cannot be complete by end of 2016, identify road blocks to progress and necessary steps/schedule for completion.
- 6) Describe the current approaches to implement monitoring on wildlife projects. Summarize in an issue paper and develop available/logical options for moving forward.

Phase 2

- 7) Begin a focused review in winter 2017 based on the work accomplished over the course of the project, especially between FY 2010-FY 2016. Establish a 5 to 10 year cycle for a results/adaptive management review by the Council and ISRP to ensure accountability and promote information sharing.

Other considerations to think about for moving forward:

- 1) IEAB's 2015 recommendations in their *Report on Long-term Cost Planning for the Fish and Wildlife Program*
- 2) WAC recommendations
- 3) [ISRP and ISAB review of annual reports associated with the Research Plan review](#)

More Info: [Council recommendations](#) for the 2009-2010 Wildlife Review.
[Wildlife Advisory Committee](#) work in 2015.

Update on Wildlife Program

June 2016

Wildlife Program Topics

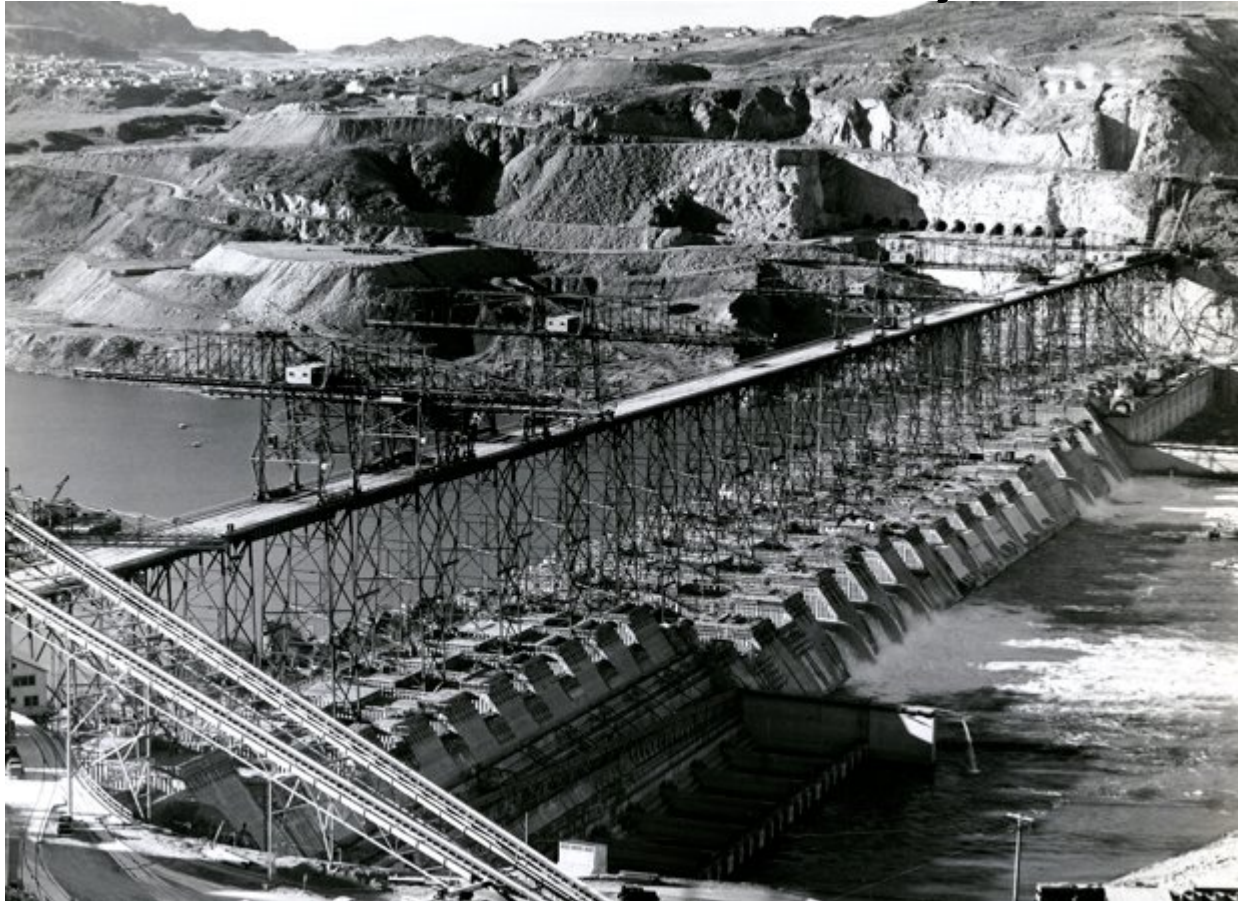
- Overview
- BPA's Lands Deskbook
- Land Management Plans
- Stewardship Funding
- Compliance Monitoring
- Current Projects

Overview





Construction and inundation effects from FCRPS dams: >376,000 acres



Mitigation To Date

- **BPA-funded wildlife projects**
 - Fee-title acquisitions
 - Conservation Easements
 - Leases
 - Enhancement on protected lands
- **Dual benefits**
 - Tier 1 fish projects



Mitigation Not Fully Recognized

- Pre-act Mitigation
- Reservoir habitat gains
- Actions on Federal Land, such as:
 - 31,000 acres of BLM grazing rights
 - 125,000 acres of retired USFS grazing allotments
- Tier 2 and Tier 3 fish habitat projects





Regional HEP Team Final Analysis

Table 4 FCRPS HU crediting summary by sub-region

Sub-region	Hydro Facilities	Total HU Losses	Mitigated HUs	Unmitigated HUs	Over-mitigated HUs
Lower Columbia	Bonneville, McNary, The Dalles, and John Day Dams	72,304	107,878	0	35,574
Upper Columbia (Washington)	Grand Coulee and Chief Joseph Dams	120,543	136,263	0	15,720
Upper Columbia (Idaho)	Albeni Falls Dam	28,658	16,686	11,972	0
Southern Idaho	Minidoka, Palisades, Black Canyon, and Anderson Ranch Dams	58,830	44,676	14,154	0
Lower Snake River	Ice Harbor Dam, Lower Monumental, Little Goose, and Lower Granite Dams	26,774	37,467	0	10,693
		307,109	342,970	26,126	61,987

Wildlife Settlement Agreements

- Libby and Hungry Horse Dams
 - State of Montana—1988
- Dworshak Dam
 - State of Idaho and Nez Perce Tribe—1992
- Willamette Dams: Big Cliff, Foster, Green Peter, Dexter, Detroit, Hills Creek, Lookout Point, and Cougar
 - Willamette Wildlife Agreement- 2010 with State of Oregon for all federal dams in Willamette; includes operational impacts
- Southern Idaho Dams: Anderson Ranch, Minidoka, Palisades, and Black Canyon
 - Southern Idaho Wildlife Agreement—2014 with State of Idaho (for half of C&I and operational impacts, including the operational impacts for Deadwood)

Summary Table

Habitat Losses	Habitat Mitigation	
376,423 acres		
	BPA-funded wildlife projects	698,406 acres
	Tier 1 fish projects	37,718 acres
	Pre-Act Mitigation	50,938 acres or 14,032 HUs
	Construction gains	53,663 HUs
	Tier 2 & 3 fish projects	10,959 acres
	Grazing leases & allotments:	156,000 acres
Total Losses	Total Mitigation	
376,423 acres	954,021 acres + 53,663 HU construction gains	

Highlights:

- Acquisition process
- Sample easement
- Land management plan template
- Reporting and monitoring

The Lands Deskbook



Bonneville Power Administration's
Deskbook for
Land Acquisition, Enhancement,
Monitoring, and Enforcement for Fish
and Wildlife Projects

First Edition, April 2016



Land Management Plans

MINTO ISLAND CONSERVATION AREA MANAGEMENT AND CONSERVATION PLAN



PREPARED FOR:

City of Salem
Public Works Department
555 Liberty Street SE Room 325
Salem, OR 97301

PREPARED BY

Pacific Habitat Services, Inc.
9450 SW Commerce Circle, Suite 180
Wilsonville, OR 97070
Phone: 503-570-0800

July 2015



SCOTCH CREEK WILDLIFE AREA MANAGEMENT PLAN

Washington Department of Fish and Wildlife

Includes: Scotch Creek, Tunk Valley, Chesaw, Pogue Mountain and
Mineral Hill Units



Prepared by Wildlife Area Manager, Jim Olson



2006



Land Management Plans

- Programmatic issue during last review
- Updated through Pisces
- Guidance on updating
 - Stabilization, enhancement, maintenance



Stewardship Funding



Stewardship Funding

- Provides long-term funding stream for O&M on fish and wildlife properties
- One-time lump sum payment to the sponsor
- Invested in an interest-bearing account to ensure that funding is available indefinitely
- Fully satisfies BPA's obligations to provide O&M funding for the property
- Sponsor can still obtain restoration funding from BPA

Benefits of Stewardship Funding

- Long-term, permanent protection
- Provides certainty
- Decreases administrative burdens
- Offers flexibility
- Can be used as leverage for cost share

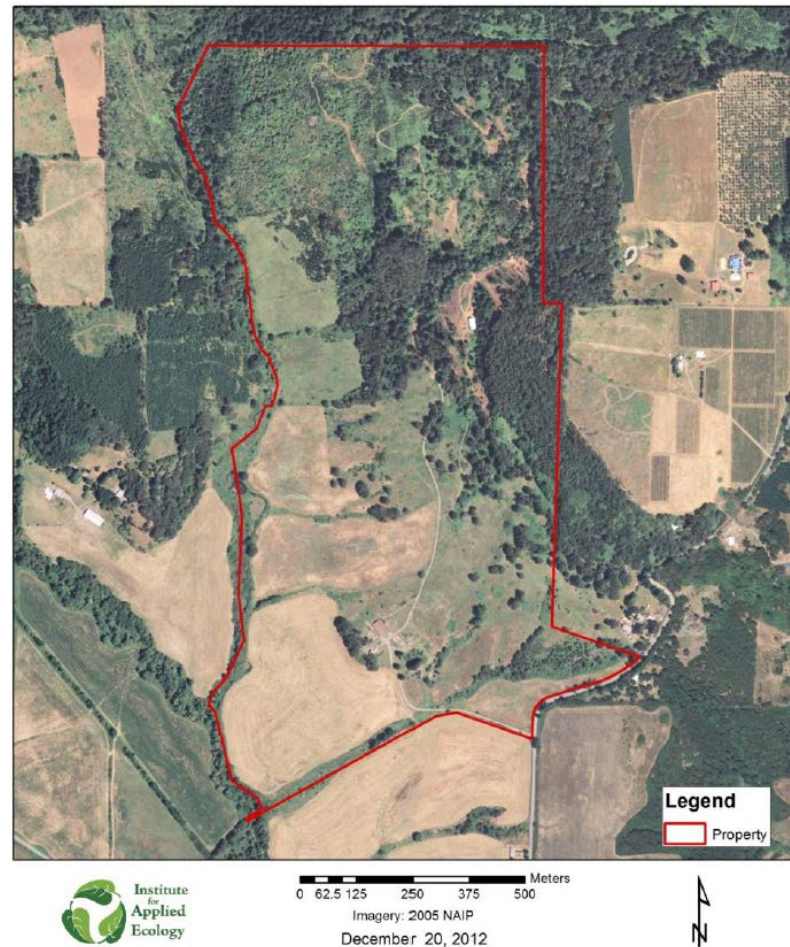


Stewardship activities

- Update management plan
- Inventory, map, and evaluate wildlife and habitat conditions
- Maintenance activities:
 - E.g. gates, fences, roads, signs, trails
- Manage public access
- Maintain real property interest
- Vegetation management



Asset Management

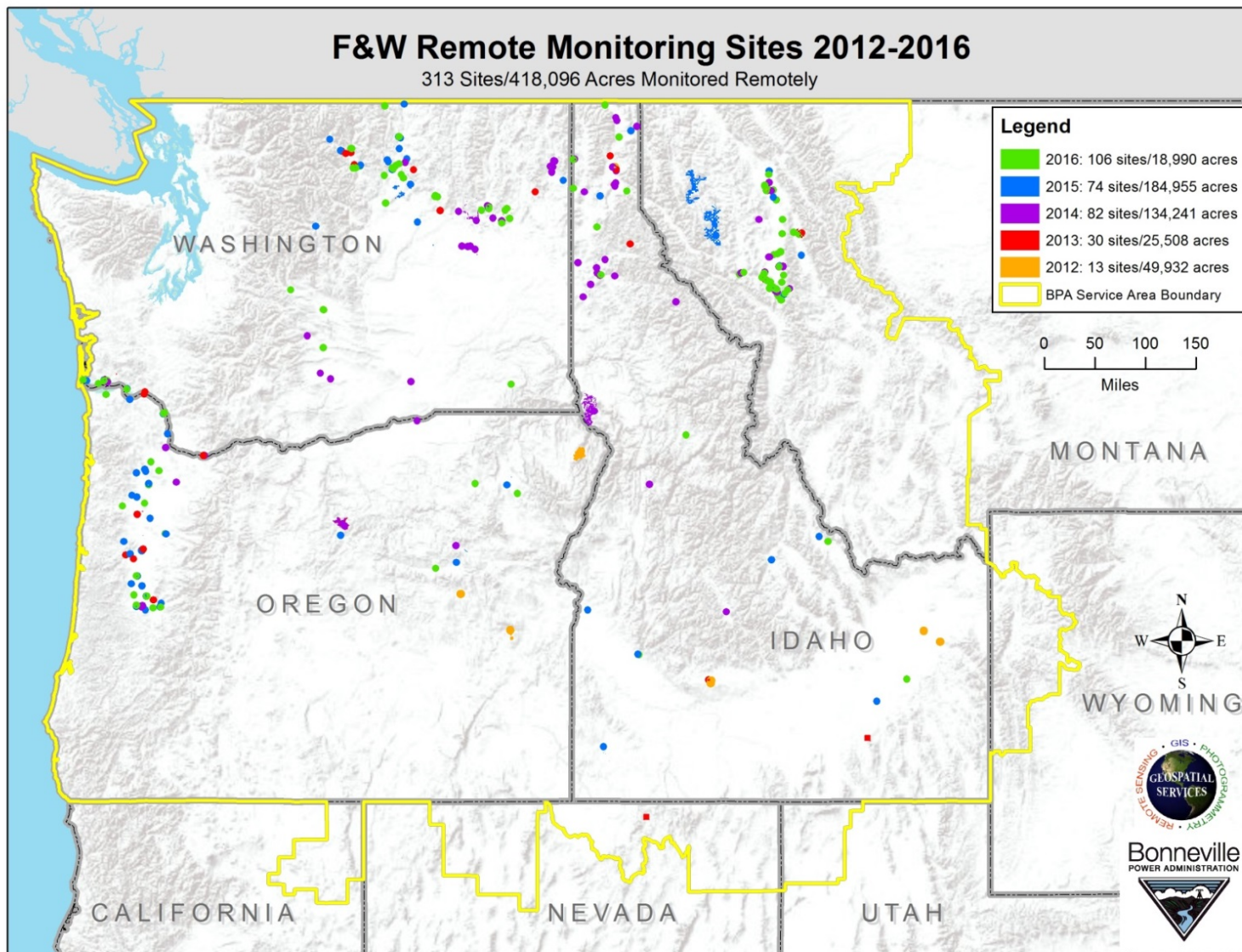


Compliance Monitoring

- Over 700,000 acres for fish and wildlife (800 parcels)
- Tools: Remote Sensing and Site Visits

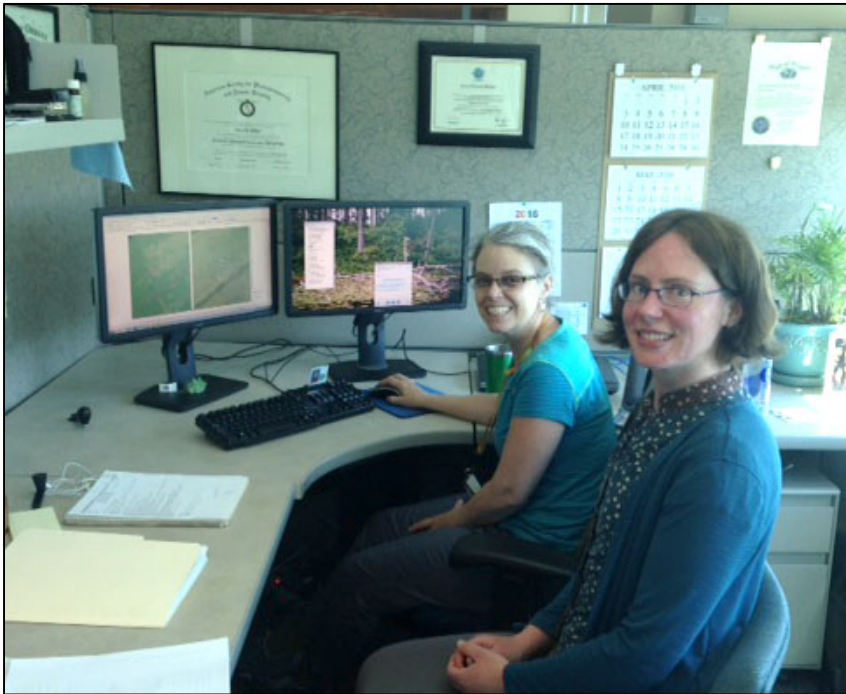


Over 400,000 acres monitored since 2012



Remote Sensing Analysis

Two-pronged approach



- In – house BPA Geospatial Services Analysis
- Satellite imagery or aerial photography

Change Analysis

Summary of 2015 Tracts Covered by Aerial Photography:

Tract ID *	State	Findings	Page #
COLSR-WL-6	OR	1 small bridge, 3 holes in field, 1 building removed	3
COLSR-WL-7	OR	2014 water level was lower than 2012	6
FRST-WL-1	OR	Vegetation growing in riparian zone	9
GRNIL-WL-1	OR	River course has changed	13
MDCOL-WL-2	WA	No change	25
PINC-WL-2	OR	No change	26
TUALT-WL-1	OR	No Change	27
TUALT-WL-2	OR	No Change	28
TUALT-WL-3	OR	Farm building removed	29
TUALT-WL-4	OR	Cropland taken out of cultivation	31
WILMIT-WL-12	OR	7 farm buildings removed, 1 small building added	33
WILMIT-WL-14	OR	Various	35
WILMIT-WL-16	OR	4 logged units, between 1 and 39 acres in size.	42
WILMIT-WL-22	OR	5% of tract has been deforested. New paved road.	45
WILMIT-WL-26	OR	9 clusters of 6' square white objects, beehives?	51
WILWF-WL-1	OR	No change	57
WILWF-WL-2	OR	No change	57
WILWF-WL-3	OR	11 beehive-like structures removed since 2012	57
WILWF-WL-4	OR	Cultivation around wetlands has changed	59
WILWF-WL-6	OR	Trees and/or shrubs growing around wetlands	63
WILWF-WL-8	OR	No change	65
WILWF-WL-10	OR	No change	66

Remote Sensing Analysis



Remote Sensing Analysis

SFSR-WL-6 Changes:

1. A new parking lot, approximately 1 acre in size was built next to Twin Butte Road/County Road N 3600E.



Follow Up Site Visits





Progress Recap and Looking Forward

- Cost Efficient Asset Management:
 - Using in house expertise, free imaging and BPA FWL staff
 - Over half of all Fish and Wildlife Holdings Monitored
 - On schedule to complete a first round of monitoring all 800 parcels in 3 more years

Moving Forward

- Focus on 2014 Program wildlife guidance:
 - Complete construction and inundation mitigation
 - Continue operational impact mitigation through settlements and stewardship agreements
 - Pursue stewardship agreements
 - Review and update management plans

Wildlife Category Review 2008-2009



2009 Wildlife Review Recap

- First category review – different approach
- Council Recommended a “body of work” -- 34 projects
- Funding recommendations FY2010-FY2014, representing an averaged budget per project based on five years of proposed funding
 - Expense NTE \$70.9 million over 5 years
 - Capital NTE \$67.6 million over 3 years
- Programmatic Issues (10)



Programmatic issues

1. New funding opportunities – expense
2. Habitat Evaluation Procedure (HEP)
 - Interaction between crediting and monitoring
 - HEP participation funding
3. Prospects for a regional RM&E approach
4. Ongoing wildlife crediting issues
5. Management Plans
 - General (standardized format, accessibility)
 - Multiple uses of wildlife lands (agriculture, grazing, including income-generating activities)

Programmatic Issues, Cont.

6. Weed control - regional plans and best management practices;
7. Equipment/facilities purchase and replacement
8. Regional Coordination funding
9. New Acquisitions – capital funding
10. COLAs and other increased funding requests



2014 Fish and Wildlife Program

- Complete operational loss assessments
- Keep acquiring and enhancing land to fully mitigate for losses
- Monitor and evaluate species response to habitat
- Complete loss mitigation agreements for remaining C&I losses by 2016
- Finalize mgmt plans for all parcels without a long-term maintenance agreement
- Provide for timely ongoing O&M for investments

Moving Forward

- ✓ Understand the status of management plans, Operational loss assessments and loss mitigation agreements
- ✓ Finalize management plan and annual reporting templates
- ✓ Remote Sensing technology
- ❑ Status of approaches to monitoring wildlife response
- ❑ Connect O&M needs to O&M strategic plan

Structuring the next review

- ✓ Begin winter 2016-2017
- ✓ Project presentations (2 days in April '17)
- ✓ Topic area symposium (1 day)
- ✓ Focus review on accomplishments, results, challenges, adaptive management and O&M needs

