

Jennifer Anders
Chair
Montana

Bo Downen
Montana

Guy Norman
Washington

Patrick Oshie
Washington



Northwest Power and Conservation Council

Richard Devlin
Vice Chair
Oregon

Ted Ferrioli
Oregon

Jim Yost
Idaho

Jeffery C. Allen
Idaho

October 8, 2019

MEMORANDUM

TO: Fish Committee Members

FROM: Stacy Horton, Washington Policy Analyst/Biologist

SUBJECT: Yakima Basin Integrated Plan Update

BACKGROUND:

Presenters: Urban Eberhart, Manager, Kittitas Reclamation District, Wendy McDermott, Director, Puget Sound and Columbia Basin, American Rivers, Michael Garrity, WDFW Columbia River/Water Policy Manager

Summary: It has now been ten years since negotiations began on the Yakima Basin Integrated Plan (YBIP) and six years since YBIP was ratified by the Washington State Legislature. Earlier this year, federal authorization for the first phase of YBIP became law as well. YBIP, which aims to significantly improve both Yakima Basin water supply reliability and fish populations, has benefitted from an unusually broad coalition including the Yakama Nation, local irrigation districts, local counties, conservation organizations, and numerous federal and state agencies including the Bureau of Reclamation, NOAA Fisheries, Washington Department of Ecology, and Washington Department of Fish and Wildlife. YBIP projects draw from seven different elements, including water supply, water conservation, fish passage, structural and operational improvements, habitat and watershed protection and enhancement, water markets, and groundwater storage. Two key participants in YBIP, Urban Eberhart of the Kittitas Reclamation District in the Ellensburg area, and Wendy McDermott of American Rivers, will provide brief background on YBIP and an update on recent legislative and on-the-ground progress, including a major fish passage project underway at Cle Elum Reservoir.

More Info: Yakima Basin Integrated Plan: <https://ecology.wa.gov/Water-Shorelines/Water-supply/Water-supply-projects-EW/Yakima-River-Basin-projects/Yakima-integrated-plan>

Yakima Basin Integrated Plan Update

Northwest Power and Conservation Council
October 15, 2019



Urban Eberhart, Kittitas Reclamation District
Wendy McDermott, American Rivers

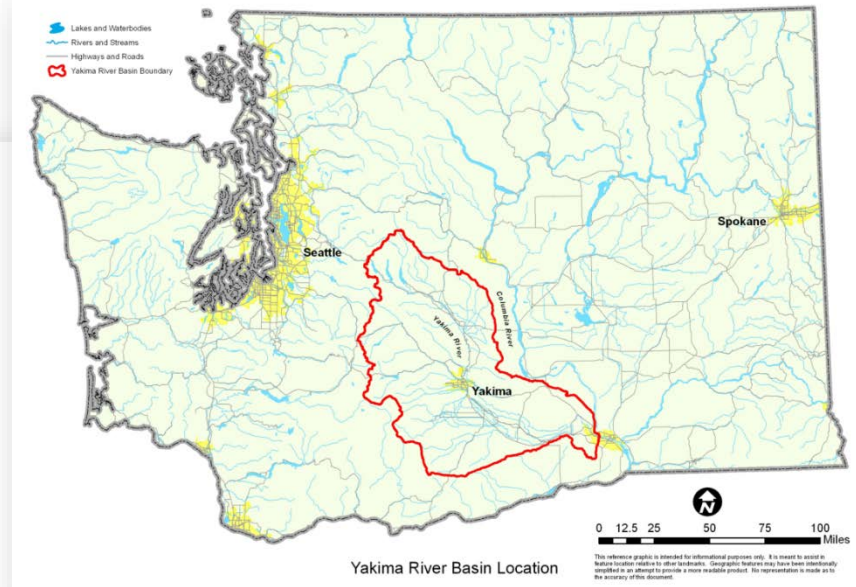
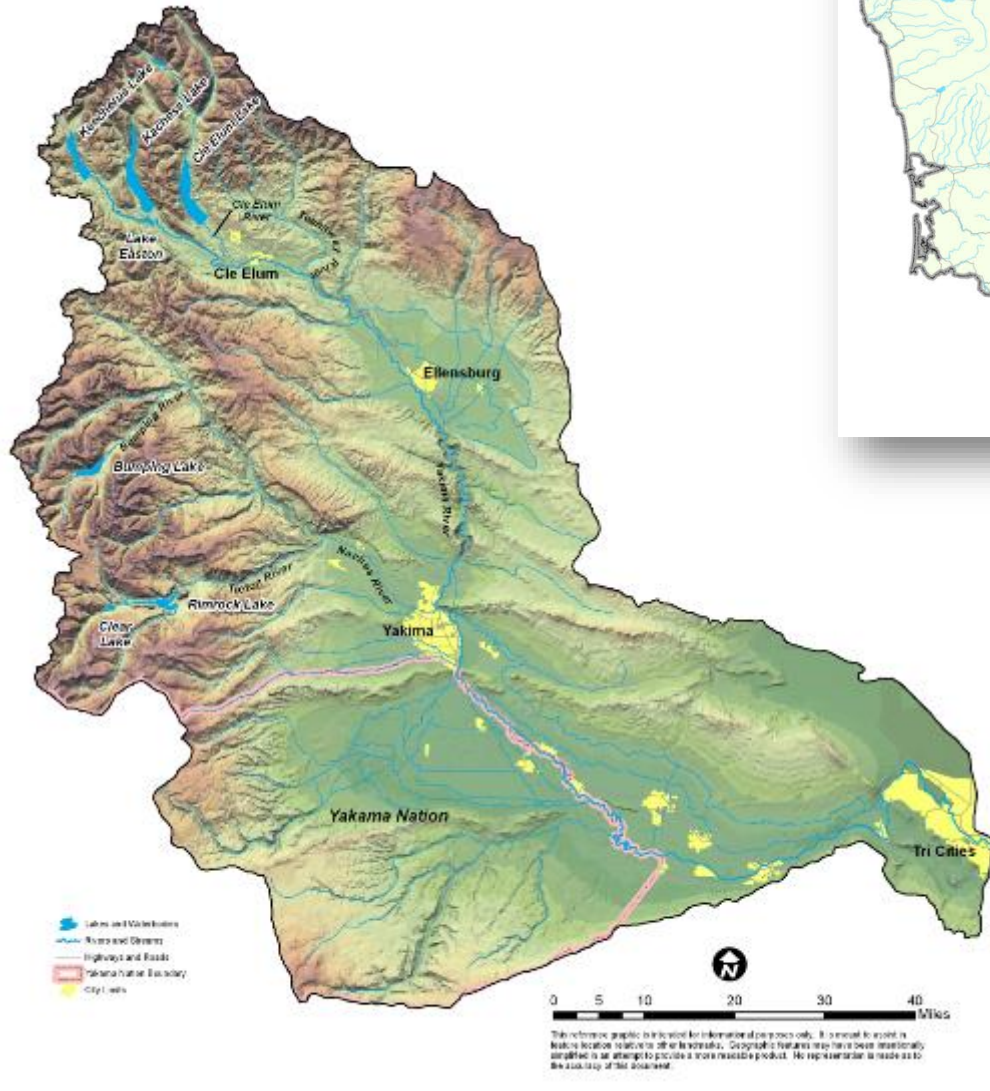


Outline

- Overview – Yakima Basin Integrated Plan and Goals
- Yakima River Basin Water Enhancement Project Timeline
- Legislation
- YBIP Status Update
 - Teanaway Community Forest and Habitat Projects
 - Surface Water Storage Element
 - Cle Elum Pool Raise and Shoreline Protection
 - Cle Elum Fish Passage
 - Kittitas Reclamation District Tributary Supplementation
 - Schaake Floodplain Restoration
 - Yakima Delta Restoration
- Federal Funding Table



Yakima River Basin Overview



- 6,155 sq. miles w/464,000 irrigated acres
- 5 reservoirs w/ 1M AF capacity, irrigation deliveries 2.3M AF
- Droughts in 1992-1994, 2001, 2005, 2015 and 2019
- Reduced Fisheries
- \$4.5 Billion agriculture economy



YRBWEP Workgroup Members

- **Federal Agencies**
 - Bureau of Reclamation
 - National Marine Fisheries Service
 - U.S. Fish and Wildlife Service
 - U.S. Forest Service
 - U.S. Army Corps of Engineers
- **Yakama Nation**
 - Yakama Nation Natural Resources
 - Yakima/Klickitat Fisheries Project
- **Washington State Agencies**
 - Department of Ecology
 - Department of Agriculture
 - Department of Fish and Wildlife
 - Department of Natural Resources
- **Local Governments**
 - Benton County
 - Kittitas County
 - Yakima County
 - City of Yakima
- **Irrigated Agriculture**
 - Kennewick Irrigation District
 - Kittitas Reclamation District
 - Roza Irrigation District
 - Sunnyside Valley Irrigation District
 - Yakima-Tieton Irrigation District
- **Other Stakeholders**
 - American Rivers
 - Yakima Basin Fish & Wildlife Recovery Board
 - Yakima Basin Storage Alliance
 - Trout Unlimited



10-Year Anniversary – June 2009 to June 2019



Yakima Basin Integrated Plan

- **Goals:**
 - **Restore and enhance environment, fish and wildlife, including fish passage at federal dams**
 - **Improve water supply during drought years (70% proratable supply)**
 - **Provide for efficient and adaptable water supply management**
 - **Contribute to sustainable economy and environment**



Yakima Basin Integrated Plan Overview

YAKIMA RIVER BASIN INTEGRATED WATER RESOURCE MANAGEMENT PLAN

Structural & Operational Changes

1. Raise the Cle Elum Pool by three feet to add 14,600 ac-ft in storage capacity.
2. Modify Kittitas Reclamation District canals to provide efficiency savings.
3. Construct a pipeline from Lake Keechelus to Lake Kachess to reduce flows and improve habitat conditions during high flow releases below Keechelus and to provide more water storage in Lake Kachess for downstream needs.
4. Decrease power generation at Roza Dam and Chandler power plant to support outmigration of juvenile fish.
5. Make efficiency improvements to the Wapatox Canal.

Enhanced Water Conservation

1. Implement an agricultural water conservation program designed to conserve up to 170,000 acre-feet of water in good water years.
2. Create a fund to promote water use efficiency basin-wide using voluntary, incentive-based programs. Focus on outdoor uses as top priority.

Habitat/Watershed Protection & Enhancement

1. Protect ~70,000 acres of land by acquiring high elevation portions of the watershed and forest and shrub steppe habitat.
2. Evaluate potential Wilderness, Wild and Scenic River, and National Recreation Area designations to protect streams and habitat.
3. Create a habitat enhancement program to address reach-level floodplain restoration priorities and restore access to key tributaries.

Market Reallocation

Employ a water market and/or a water bank to improve water supply in the Yakima River basin. Market reallocation would be conducted in two phases:

The near-term phase would continue existing water marketing and banking programs in the basin, but take additional steps to reduce barriers to water transfers.

The long-term program would focus on facilitating water transfers between irrigation districts. This would allow an irrigation district to follow land within the district and lease water rights for that land outside the district.



Reservoir Fish Passage

- Provide fish passage at:
1. Clear Lake
 2. Cle Elum
 3. Bumping
 4. Tieton (Rimrock)
 5. Keechelus
 6. Kachess

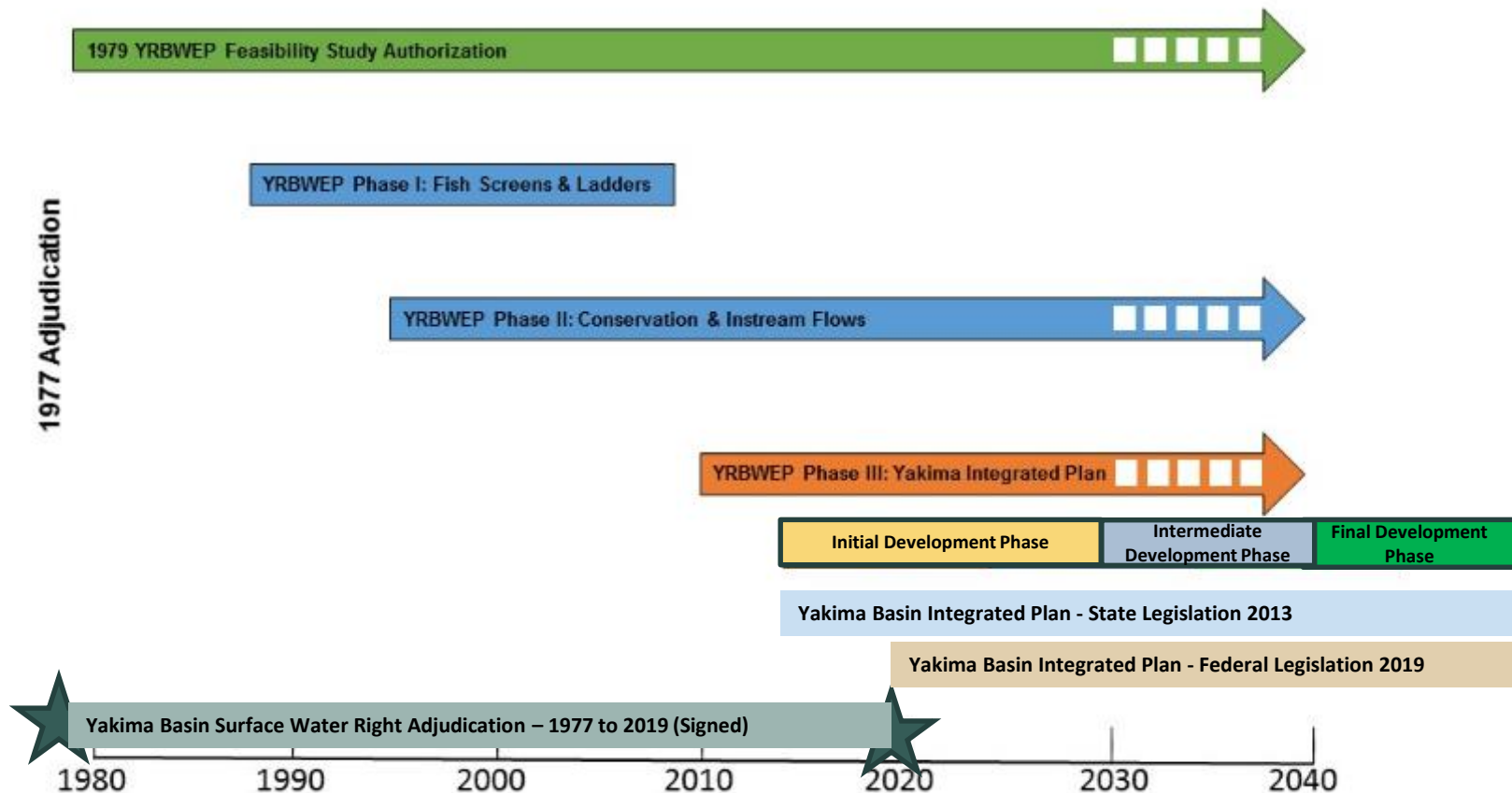
Surface Water Storage

1. Build a 162,500 ac-ft off-channel surface storage facility at Wymer on Lmuma Creek.
2. Access an additional 200,000 ac-ft of water by tapping into inactive storage at Lake Kachess.
3. Construct a new dam at Bumping Reservoir to increase capacity to 190,000 ac-ft.
4. Begin appraisal of potential projects to transfer water from the Columbia River to the Yakima Basin.

Groundwater Storage

1. Construct pilot projects to evaluate recharging shallow aquifers via groundwater infiltration. Full scale implementation may follow.
2. Build an aquifer storage and recovery facility allowing Yakima City to withdraw water from the Naches River during high flow periods and store it underground for use during low flow periods.

Yakima River Basin Water Enhancement Project Timeline



John D. Dingell, Jr. Conservation, Management, and Recreation Act



Sponsors: Senator Cantwell (D-WA) and Senator Murkowski (R-AK)
and Yakima Title: Senator Cantwell, Congressman Newhouse (R-WA) and
Congresswoman Schrier (D-WA)

Passed Republican controlled Senate – February 12, 2019

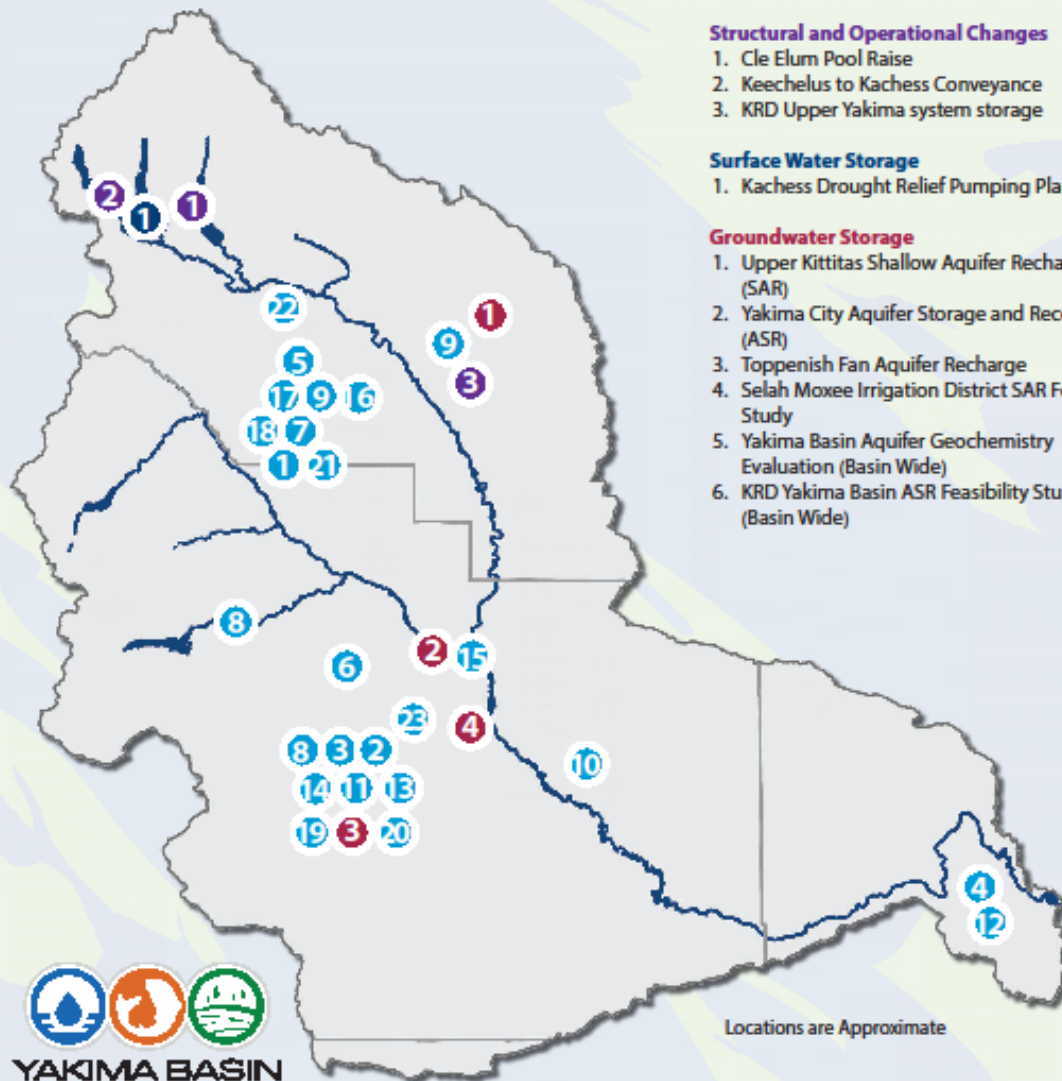
Passed Democratic controlled House – February 26, 2019

Signed March 12, 2019



Yakima Basin Integrated Plan Initial Development Phase

Map I - Conservation, Storage, Operations, and Water Market Projects



Structural and Operational Changes

1. Cle Elum Pool Raise
2. Keechelus to Kachess Conveyance
3. KRD Upper Yakima system storage

Surface Water Storage

1. Kachess Drought Relief Pumping Plant

Groundwater Storage

1. Upper Kittitas Shallow Aquifer Recharge (SAR)
2. Yakima City Aquifer Storage and Recovery (ASR)
3. Toppenish Fan Aquifer Recharge
4. Selah Moxee Irrigation District SAR Feasibility Study
5. Yakima Basin Aquifer Geochemistry Evaluation (Basin Wide)
6. KRD Yakima Basin ASR Feasibility Study (Basin Wide)

Agricultural and Municipal Conservation (2013-2019)

1. KRD 13.6, 13.8 Lateral Piping Project
2. Wapato Irrigation Project (WIP) Piping Lateral 4-414C
3. WIP Piping Satus East Lateral E73
4. Kennewick Irrigation District (KID) Division IV Lining
5. Manastash Creek Sprinkler Conversions
6. Yakima-Tieton ID Diversion Relocation Feasibility Study
7. Manastash – Consolidated Pipeline & Manastash Water Ditch Association (MWDA) Pipeline Construction
8. WIP Piping of Unit 2 L672 and Headworks Rebuild
9. KRD North Branch Canal Lining
10. Roza Canal Lining Phases I, II, III, IV
11. WIP Lining of Unit 2 (167+20 to 173+80)
12. KID Reregulation Reservoir Design
13. WIP Unit 2 Upper Dam Rebuild and Lower Dam Removal
14. WIP Water Conservation Plan
15. City of Yakima Xeriscape Demonstration Project
16. Reed Pipeline Design Manastash Creek
17. Anderson Diversion Irrigation Water Acquisition
18. KRD South Branch Canal Lining, Phases I and II
19. WIP Unit 2 West Piping
20. WIP Unit 2 West Lining
21. KCCD Irrigation Efficiency Improvements
22. KRD Upper Tributary Supplementation
23. WIP Track D Lateral Pipeline
24. Heritage Gardens Municipal Conservation Program (Basin Wide)

Water Bank/Exchange Programs

1. KRD/TU Yakima basin Water Market Structure and Strategic Development (Basin Wide)

Locations are Approximate

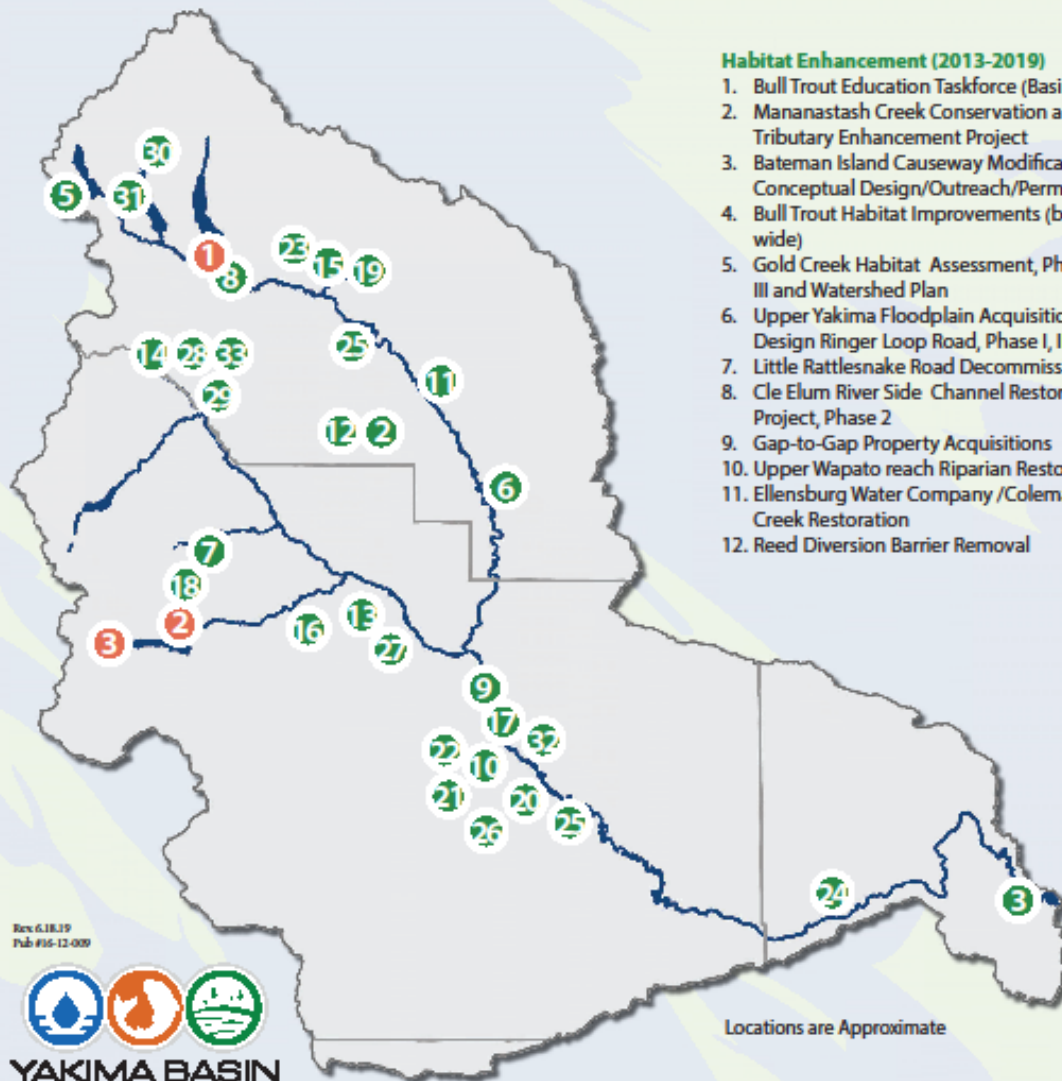


Rev. 6.18.19
Pub #16-12-009



Yakima Basin Integrated Plan Initial Development Phase

Map 2 - Fish Passage and Habitat Enhancement Projects



Habitat Enhancement (2013-2019)

1. Bull Trout Education Taskforce (Basin Wide)
2. Mananastash Creek Conservation and Tributary Enhancement Project
3. Bateman Island Causeway Modification Conceptual Design/Outreach/Permitting
4. Bull Trout Habitat Improvements (basin wide)
5. Gold Creek Habitat Assessment, Phase I, II, III and Watershed Plan
6. Upper Yakima Floodplain Acquisition and Design Ringer Loop Road, Phase I, II
7. Little Rattlesnake Road Decommissioning
8. Cle Elum River Side Channel Restoration Project, Phase 2
9. Gap-to-Gap Property Acquisitions
10. Upper Wapato reach Riparian Restoration
11. Ellensburg Water Company /Coleman Creek Restoration
12. Reed Diversion Barrier Removal

13. Trout Meadows Acquisition /Enhancement
14. Little Naches Land Acquisition
15. Teanaway Valley Farm Acquisition and Restoration
16. Cowiche Easement/Design
17. Gap-to-Gap Outfall Relocation and Levee Removal Design and Restoration
18. South Fork Tieton Bull Trout Passage Feasibility and Design, Phase I, II, III
19. Teanaway/Indian Creek Restoration and Large Wood Replacement
20. Yakima Rivermile 89.5 Levee Breach
21. Island Road Floodplain Reconnection - Toppenish Creek
22. Toppenish Creek - Pop Pom Road
23. Teanaway Habitat Restoration and Fencing, Phase I, II, III
24. Lower River Thermal Refuge
25. Wapato reach Riparian Project
26. Yakima Basin Tributary Restoration (Starvation Flats, Ahtanum, Toppenish)
27. Naches River and Cowiche Creek Restoration
28. Little Naches Large Wood Project
29. Fawn Creek Culvert Replacement
30. Kachess River Passage and Floodplain Assessment
31. Box Creek Large Wood Replenishment
32. Donald Wapato Bridge Restoration
33. Little Naches River Watershed Aquatic Restoration

Fish Passage

1. Cle Elum Dam
2. Tieton (Rimrock) Dam
3. Clear Creek Dam

Locations are Approximate

Rev 6.18.19
Pub #16-12-009



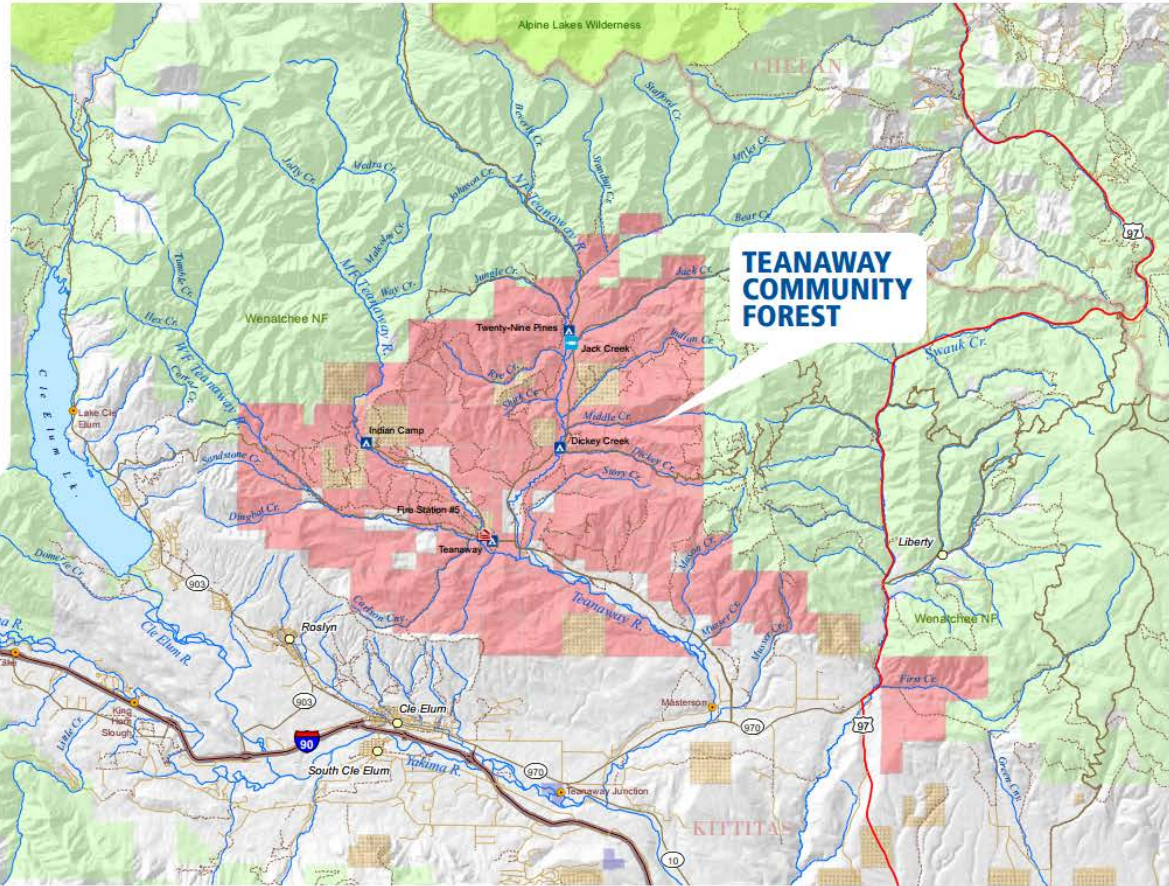
To ask about the availability of this document in a format for the visually impaired, call Office of Columbia River at 509-575-2490. Persons with hearing loss can call 711 for Washington Relay Service. Persons with a speech disability can call 877-833-634.

TEANAWAY COMMUNITY FOREST

The Teanaway Community Forest is a 50,272-acre forest situated at the headwaters of the Yakima Basin watershed. The forest will be managed through a partnership between the Washington state departments of Natural Resources (DNR) and Fish & Wildlife, with input from the local community and interested stakeholders.

DNR designed the community forest model, which was approved by state lawmakers in 2011. The model is a tool to involve local citizens in protecting working forests that support healthy communities through grazing, forestry, recreation, and conservation.

The Teanaway property was identified as part of the Yakima Basin Integrated Plan as an area of importance to safeguard the Yakima Basin water supply and associated habitat, and to support the economy by preserving working lands and enhancing recreation opportunities. The Basin Plan was developed by a coalition of public and private organizations committed to increasing the quantity and quality of water in the Yakima River Basin.



FACILITIES

- Building
- Campground
- Acclimation Pond
- WDFW Water Access Sites

ROADS

- Interstate
- Major Highway
- Road
- Local Road
- Unimproved Road

HYDROGRAPHY

- Rivers
- Streams

LAND MANAGEMENT

- Teanaway Community Forest
- Washington Dept. of Natural Resources
- USFS Wilderness Areas
- US Forest Service
- Washington State Parks
- Washington Dept. of Fish & Wildlife

0 0.5 1 2 3 4 Miles

LEARN MORE

<http://bit.ly/teanaway>



WASHINGTON STATE DEPARTMENT OF
Natural Resources



Washington
Department of
**FISH and
WILDLIFE**



U.S. DEPARTMENT OF THE INTERIOR
**DEPARTMENT OF
ECOLOGY**
State of Washington



Teanaway Community Forest

Recreation, Working Lands & Floodplain Restoration



Teanaway Community Forest

Before: Briefing Congressman Reichert



After wood placement



Project designed to:

- Increase base flows, improve downstream supply, and decrease peak flows
- Restore stream-floodplain interactions
- Moderate temperature



Teanaway Watershed Restoration: 33 miles of watershed functions restored



Box Canyon Creek Large Wood Project

- Designated critical habitat for federally listed Columbia River bull trout
- Implemented by Kittitas Conservation Trust:
 - \$330,000 funded by WA Department of Ecology through YBIP
 - \$80,000 funded by US Fish and Wildlife Service
- 1.4 miles of stream habitat enhanced
- 1,000,000 pounds of wood delivered



Little Naches Culvert Replacements

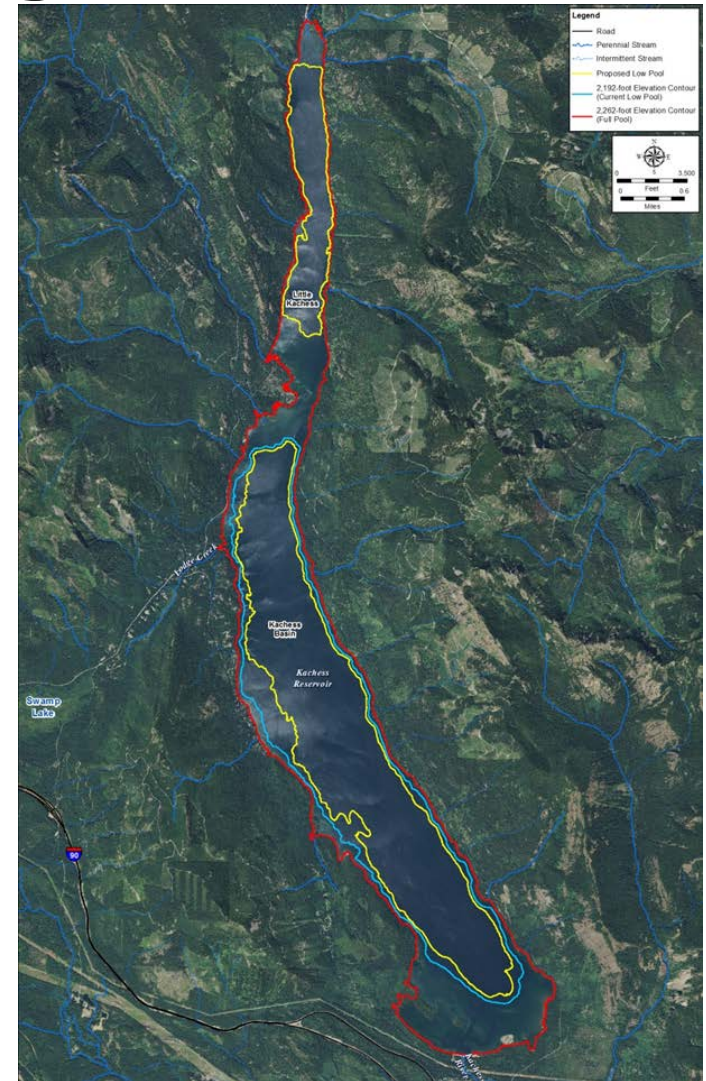


- Designated critical habitat for federally listed Columbia River bull trout and Mid-Columbia River steelhead
- 13 culvert replacements will reconnect over 20 miles of fish habitat
- Fawn Creek culvert first contract awarded
 - \$517,000 total cost
 - \$175,000 funded by WA Department of Ecology through YBIP



Surface Water Storage Element

- **Kachess Drought Relief Pumping Plant**
 - Existing Reservoir: Access up to 200,000 acre-feet from inactive storage pool in dry years
- **Wymer Dam & Reservoir**
 - New off-channel reservoir, 163,000 acre-feet
- **Bumping Dam & Reservoir Enlargement**
 - Replace existing dam to add 165,000 acre-feet





Cle Elum Pool Raise

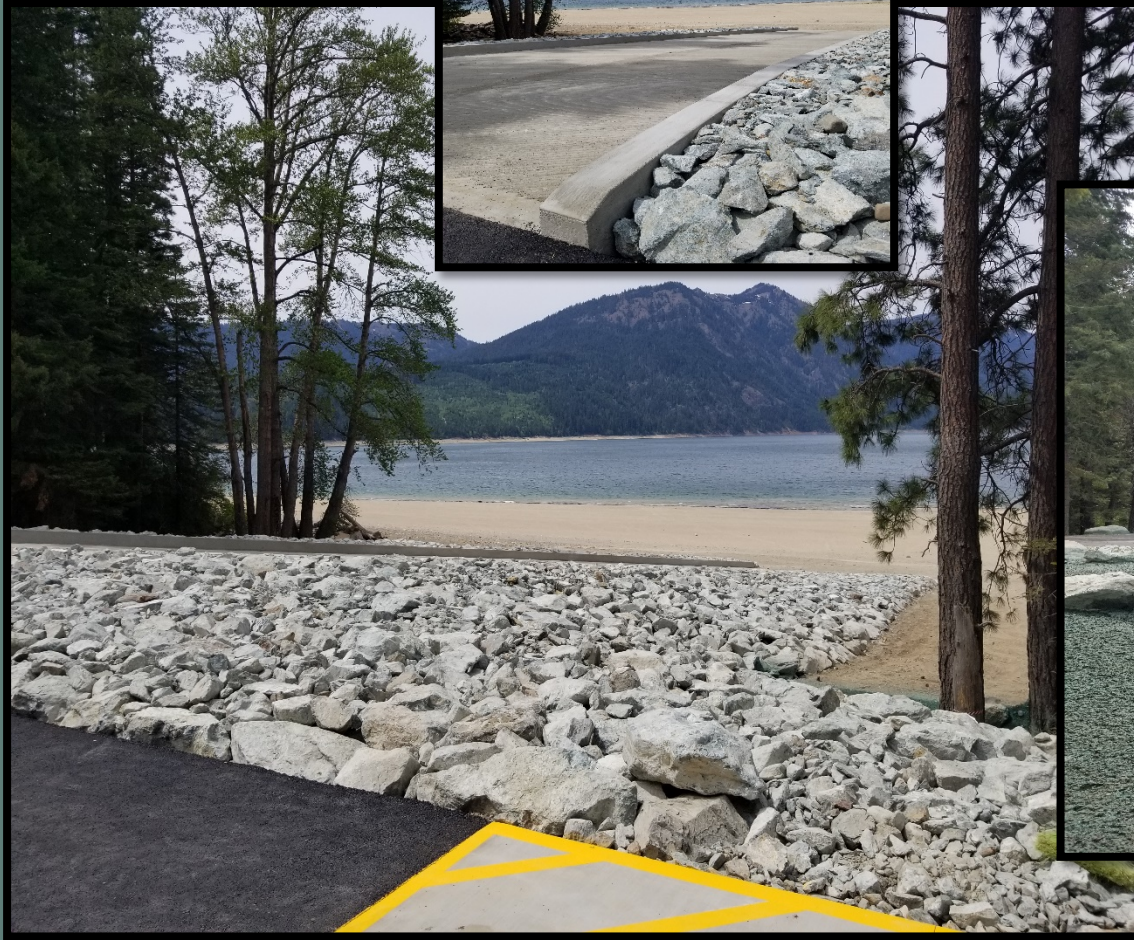
14,600 acre-feet managed for instream flows

- Modify radial gates - complete
- Shoreline protection – under construction
- Land acquisition – in process



Cle Elum Reservoir Shoreline Protection

Speelyi Day Use
Area Construction
Complete



Construction Complete May 15, 2019



Fish Passage at Reservoirs

- Benefits: Opens up high quality, cool water habitat. Allows Sockeye restoration
- Without the lake and upper river habitat, full restoration of Yakama Nation Treaty fishery is impossible
- Sockeye restoration began in 2009



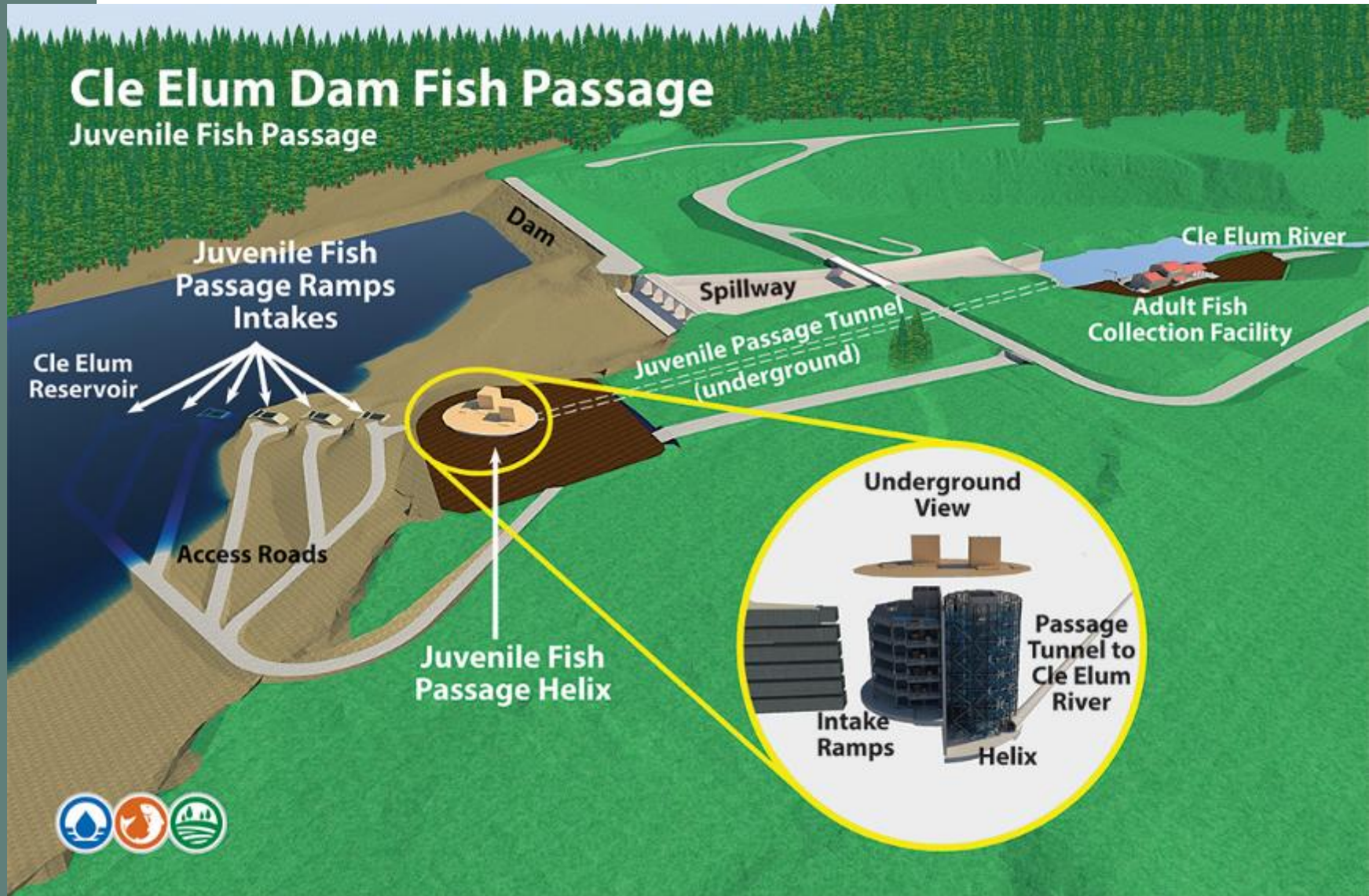
Habitat above Cle Elum Dam



2013 - First Sockeye to be born and raised in the Yakima River Basin in over 100 years to return, released into Cle Elum Reservoir



Cle Elum Dam Fish Passage



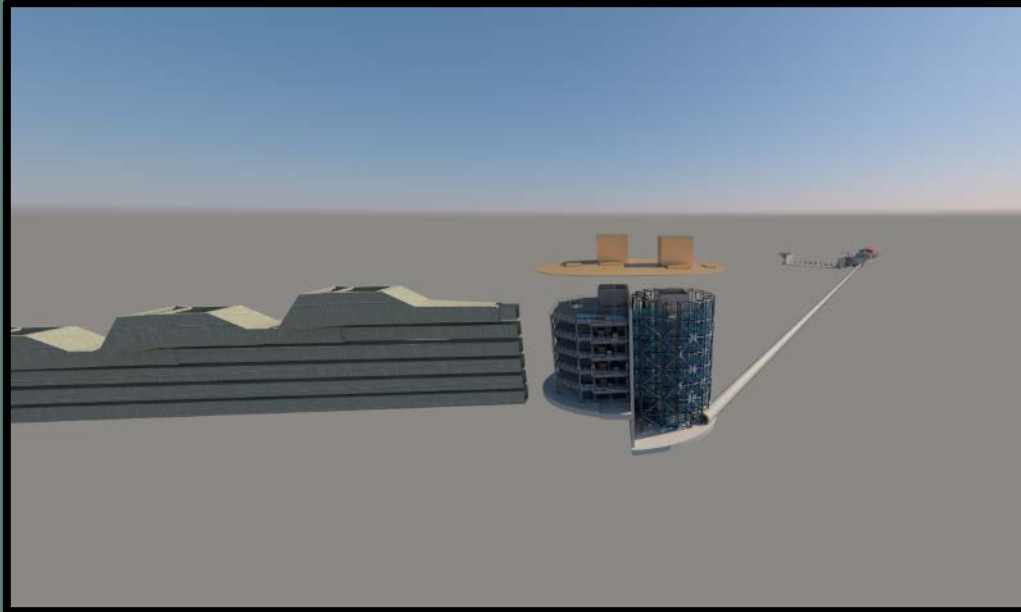
Secant Pile Contract – Complete



Completion of Cle Elum Secant Pile Contract
Cle Elum Dam Fish Passage Project, Washington
2016 – 2018



Intake, Gate and Helix



Kittitas Reclamation District (KRD)

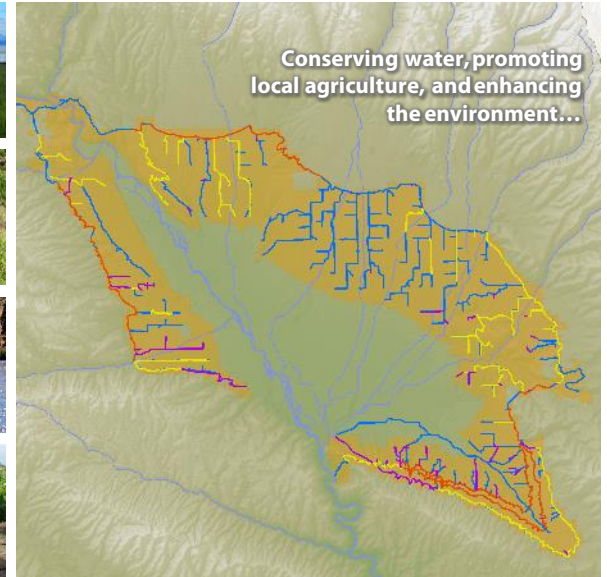
Water Conservation Projects Benefits and Costs

ID No.	Facility Name	Estimated Length of Canal Lining or Piping (LF)	Estimated Annual Water Savings (Acre Feet)	Estimate Project Cost (Millions)
1	MB 13.6 Pipe	9,497	743	\$3.1
2	MB Lining	35,892	2,526	\$15.0
3	Main Branch Weep Drains	N/A	3,570	\$1.4
4	Lateral NB 4.1	33,230	900	\$7.0
5	Lateral NB 5.8	4,860	400	\$0.9
6	Lateral NB 6.4	6,890	900	\$1.4
7	Lateral NB 7.7 Sub Laterals 1.59, 2.9R	26,640	1,300	\$5.7
8	Lateral NB 8.3	22,110	2,100	\$5.9
9	NB 4.0 – 14.7	54,235	4,925	\$20.8
10	Lateral NB 20.2	8,590	1,400	\$2.5
11	Sub Lateral NB 20.8-0.8	8,060	1,400	\$2.5
12	Lateral NB 22.0	9,230	3,800	\$4.7
13	Lateral NB 22.8	650	300	\$0.3
14	NB 23.3 – 31.1	43,582	3,958	\$16.8
15	Lateral NB 26.7 Sub Laterals 1.7, 3.1, 4.4, 4.61 Sub Sub Lateral 4.4-0.4	40,790	3,200	\$11.4
16	Lateral NB 27.5	5,330	700	\$1.1
17	Lateral NB 28.6	2,100	200	\$0.6
18	NB 31.3 – NB to Johnson Spill	N/A	1,000	\$1.4
19	Lateral NB 33.5 Sub Laterals 2.0, 3.0 Sub Sub Lateral 2.0-1.8	35,050	2,200	\$8.2
20*	North Branch Canal lining between Johnson Siphon and Wippel Pumping Plant	17,109	2,715	\$5.8
21	Lateral NB 35.1	4,420	500	\$1.0
22	WW 0.0 – Wippel Headworks > 100cfs	N/A	1,949	\$1.0
23*	Pump Ditch Piping (includes 2018 PD lining 5-mile project)	76,200	4,400	\$29.7
24	Turbine Ditch Lining	48,188	4,376	\$18.5
25	Gravity Ditch Lining	71,824	6,522	\$27.6
26	Turbine 12.0 – Billiter Spill	N/A	1,428	\$1.0
27	Turbine Ditch Piping	21,650	2,400	\$6.7
28	Lateral SB 14.3	16,500	600	\$4.1
29	SB Extension	12,390	600	\$4.2
30	SB 14.0 – SB to Manastash Spill	N/A	2,019	\$1.0
31	SB Canal Lining from Robinson Canyon to Manastash	21,648	1,427	\$8.0
32	Lateral SB 11.7	6,190	300	\$1.4
33*	Lateral SB 9.9	6,584	400	\$0.9
34	TD 7.0 – Taneum Ditch Tail Spill	N/A	2,133	\$1.0
35*	SB Canal Lining from Swede Tunnel to Robinson Canyon	13,862	2,000	\$5.8
36	SB 3.9 – 7.0	16,560	1,078	\$5.8
37	Lateral SB 4.8	2,540	300	\$0.8
38	Turner Ditch	7,187	520	\$2.0
39	Taneum Ditch	8,634	624	\$2.4
40	TD 0.00 – Taneum Chute Spill	N/A	1,317	\$1.0
41	Lateral SB 1.7	7,210	200	\$1.6
42	SB 0.9 – 1.7	4,182	272	\$1.5
A**	NB 1.0	N/A	21,363	\$147.0
B**	NB 14.7	N/A	8,892	\$35.1
C**	NB 29.2	N/A	5,122	\$11.5
D**	NB 30.4	N/A	3,893	\$11.9
E**	PD 1.0	N/A	3,017	\$62.1
F**	SB 7.7	N/A	5,707	\$38.1
G**	SB 5.15	N/A	1,498	\$17.1
TOTALS			123,094 AF	\$566.3

Note: All costs and water savings are preliminary and subject to refinement during conceptual and preliminary design. Water saving figures were generated utilizing information provided by the Kittitas Reclamation District Feasibility Investigation, dated March 2015, Yakima River Basin Study KRD Canal Modifications Technical Memorandum, dated March 2011 and various technical data provided by the Kittitas Reclamation District.



Kittitas Reclamation District Water Conservation and Habitat Improvement Program



KRD Water Conservation and Habitat



Kittitas Reclamation District Water Conservation and Habitat Improvement Program

Conserving water through strategic capital improvements will offset anticipated water shortages, promote the regional economy, and enhance the environment

- KRD Boundary
- Existing Open Channel (Canal, Ditch, Lateral)
- Existing Piped Lateral
- Proposed Canal Lining
- Proposed Lateral to be Piped
- 5 Proposed Project (see back page)
- Potential Water Storage Location
- ▼ Canal Spill Location
- Road
- Stream

0 1 2 Miles

Tributary Supplementation Program

During the severe drought of 2015, the KRD secured outside funding to help save endangered fish through tributary supplementation by transporting water through Kittitas Reclamation District (KRD) canals to downstream tributaries in the Yakima River. Throughout the summer the KRD spilled water into multiple tributaries that were going dry due to extraordinary drought conditions in the Yakima Basin.

Water delivered to creeks via the KRD canal system prevented the mortality of thousands of fish stranded in pools that were drying up in creek beds. Washington State Fish and Wildlife documented listed salmonids in multiple life stages that were "rescued" by the cold, clean water delivered to the creeks by the KRD.

The supplemental water also prevented riparian vegetation losses. Riparian habitats are important to foster and maintain healthy stream functions. Streambanks not supported by the root-structures found in functioning riparian areas are easily eroded, which can lead to flooding, higher stream temperatures, and loss of habitat.

The KRD continues to work with the Yakima Basin Integrated Plan partners to implement additional conservation measures, which will free up more capacity in the KRD canal system to continue and expand the supplementation program.



Initial Development Phase



KRD Tributary Supplementation



Started in 2015



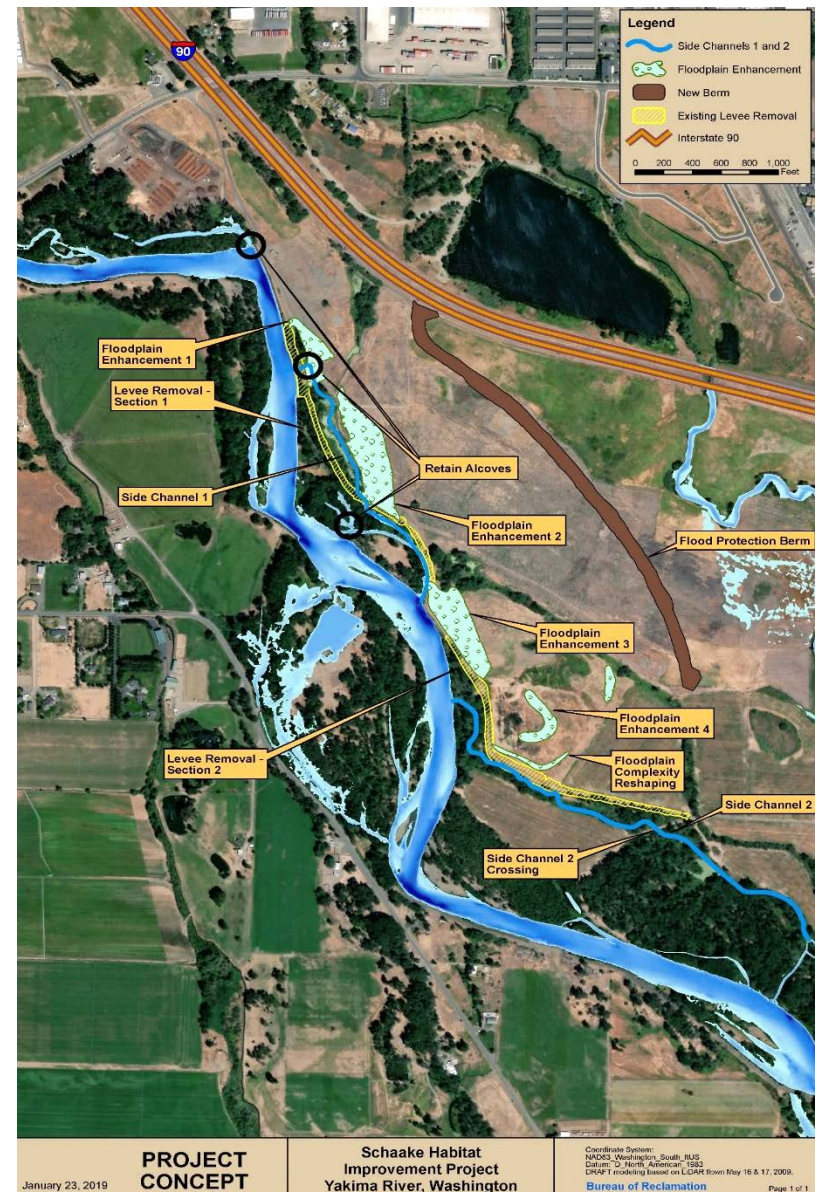
Schaake Floodplain Restoration

Phase 1 (June through Sept., 2019)

- Levee Removal
- Berm Construction
- Floodplain Excavation
- Permanent roads (BPA/KPUD)
- Revegetation

Phase 2 (July – October, 2020)

- Side channel construction
- Large wood structure installation
- Alcove excavation
- Floodplain wood installation
- Revegetation



Schaake - Levee Removal & Berm Construction



Installing the core of the berm



Reclamation's Yakima Field Office Crew



Yakima Delta Restoration



Yakima Delta Restoration

- Integral to basin-wide efforts to address issues to recover salmon and steelhead throughout the basin
- USACE Phase 1 Product: Integrated Feasibility Report/NEPA Compliance Initiated
 - Recommended Action & Environmental Compliance Documentation
 - Engineering/Technical Feasibility
 - Benefits
 - Costs to construct and maintain
- Address the following habitat issues:
 - Fish passage
 - Flow rates and patterns
 - Water temperature/quality
 - Predation



Yakima River Basin Integrated Water Resource Management Plan

FY 2011 – FY 2021 Federal Projects Funding Table

Agency	Projects/Programs Supporting the Integrated Plan	FY 2011 Funding	FY 2012 Funding	FY 2013 Funding	FY 2014 Funding	FY 2015 Funding	FY 2016 Funding	FY 2017 Funding	FY 2018 Funding	FY 2019 Funding	FY 2020* Funding	FY 2021 Funding	Purpose for funds
Reclamation	Yakima River Basin Water Enhancement Project (YRBWEP)	\$12.3M	\$10.9M	\$9.5M	\$9.3M	\$14.5M	\$22.1M	\$23.8M	\$28.1M	\$23.7 M	\$10.8 M		Water Conservation, Tributary Habitat Restoration, Fish Passage, Water Supply, Water/Land Acquisitions and Restoration Note: \$1.3 M was appropriated in FY2010 for the Yakima Basin Study
Bonneville Power Administration	Northwest Power and Conservation Council's Fish and Wildlife Program	\$22.7M	\$20.5M	\$20.0M	\$17.6M	\$18.6M	\$19.6M	\$20.4M	\$18.1M				Water Conservation, Tributary Habitat Restoration, Fish Passage, Water/Land Acquisitions and Restoration, Monitoring and Evaluation, Artificial Production
US Forest Service	Land and Water Conservation Fund	\$845k	\$2.6M	\$874k	\$3M	\$3.4M	\$2.2M	\$1.5M	\$5M	\$4M			Purchase Property consistent with Land Acquisition areas identified in Yakima Integrated Plan
NOAA Fisheries	Pacific Coastal Salmon Recovery Fund	\$1.2 M	\$1.2M	\$1.2 M	\$1.2 M	\$1.2M	\$1.2M	\$1.2M	\$1.2M	\$1.2M	\$1.2M		Yakima Basin habitat projects
US Department of Agriculture, Natural Resources Conservation Service	Regional Conservation Partnership Program					\$105k	\$1.9M	\$1.5M	\$1.8M	\$2.3M	\$2.4M	\$1.6M	Water conservation and habitat restoration projects on Yakama Nation reservation and across the Yakima River Basin..
	Environmental Quality Incentives Program	\$1.83M	\$1.36M	\$826k	\$1.37M	\$1.07M	\$2.6M						Irrigation efficiencies, water quality, and fish habitat improvements on agricultural land.
Bureau of Indian Affairs	Lining and piping on Wapato Irrigation Project		\$630k	\$1.1M	\$200k	\$700k	\$1.35M	\$2.8M	\$1.9M				Water Conservation
US Fish and Wildlife	Partners for Fish and Wildlife National Fish Passage Program	\$190k	\$124k	\$190k	\$90k	\$55k	\$200k	\$256k	\$200k				Habitat Restoration/ Fish Passage
Bureau of Land Management	Region Water Conservation program												Water Conservation
Corps of Engineers	Flood plain restoration		\$6.6M	\$380k	\$100k	\$270k	\$170k	\$40k	\$700k				Levee Reconfiguration Setback and Removal

*President's budget request. Subject to change.



Questions



For further information on the web:

<http://www.usbr.gov/pn/programs/yrbwep/2011integratedplan/>

<http://www.ecy.wa.gov/programs/wr/cwp/YBIP.html>

