

**Richard Devlin**  
Chair  
Oregon

**Ted Ferrioli**  
Oregon

**Guy Norman**  
Washington

**Patrick Oshie**  
Washington



**Northwest Power and  
Conservation Council**

**Bo Downen**  
Vice Chair  
Montana

**Jennifer Anders**  
Montana

**Jim Yost**  
Idaho

**Jeffery C. Allen**  
Idaho

March 10, 2020

**MEMORANDUM**

**TO: Council Members**

**FROM: Ben Kujala, Chad Madron**


**SUBJECT: Power Plan Project Timing Check-In**

**BACKGROUND:**

**Presenter:** Ben Kujala, Chad Madron

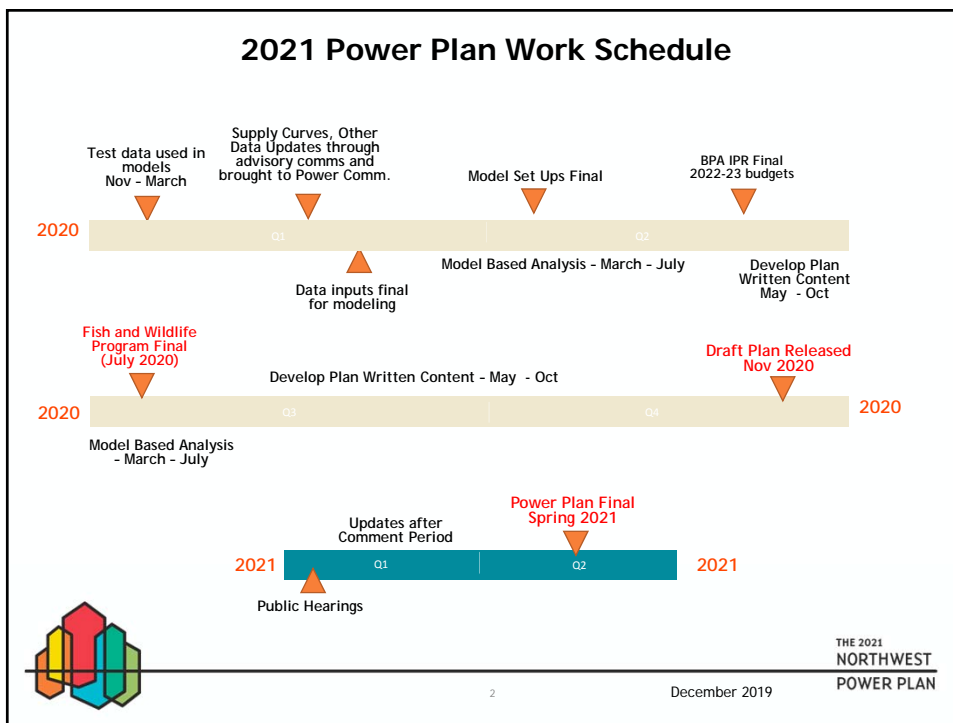
**Summary:** Staff will provide an overview of power plan related presentations and findings to date and discuss schedule for the next six months of power committee work.

# 2021 NW Power Plan Status



**THE 2021  
NORTHWEST  
POWER PLAN**  
FOR A SECURE & AFFORDABLE  
ENERGY FUTURE

1



2

## Plan Related Presentations to the Power Committee or Full Council

- Scenario Analysis
  - Review of Plan Scenarios – Part 1 (01/2020) & Part 2 (02/2020)
  - Scenarios proposed for inclusion (07/2019)
- Resource Strategy
  - Briefings on Power Plan Analytical Process (02 & 03/2020)
  - Updates to RPM Methodologies (01/2020)
  - Overview of Plan and how the proposed resource strategy is developed (05/2019)
- Conservation and Energy Efficiency
  - Briefing on Lighting Standards and Considerations for the 2021 Power Plan (02/2020)
  - Update on planning parameters for EE supply curves (8/2019)
- Generation Resources
  - Draft natural gas reference plants & Draft conventional geothermal reference plant (02/2020)
  - Draft Pumped storage reference plant (12/2019)
  - Onshore Wind Generation Reference Plant (11/2019)
  - Solar, Battery Storage, and Solar + Battery Storage Reference Plants (10/2019)
  - Review of Existing System and WECC-Wide Coal Retirements (09/2019)



THE 2021  
NORTHWEST  
POWER PLAN

3

3

## Plan Related Presentations to the Power Committee or Full Council

- Load and Price Forecasts
  - Updates to load and other forecasts based on GCM Selection (02/2020)
  - Further Detail on Load Forecast (10/2019)
  - Forecast of Draft Loads w/Frozen Efficiency for 2021 Power Plan/Related GCMs, (09/2019)
  - Economic drivers for the plan (04/2019)
  - Upstream Methane (01/2020)
  - Update on Wholesale Electricity Price Forecast and Avoided Emissions Rate (11/2019)
  - Natural Gas Price Forecast for 2021 Power Plan (11/2019)
- Climate Change
  - General Circulation Model Scenario Selection (11/2019)
  - Intro to Climate change and the 2021 power plan (04/2019)



THE 2021  
NORTHWEST  
POWER PLAN

4

4

## Plan Related Presentations to the Power Committee or Full Council

PLUS:

- Review State Clean Energy Policies and Impact on 2021 Plan Analysis
- Briefing on methodology for quantifying the environmental costs and benefits of new resources for the 2021 Power Plan (09/2019)
- Environmental Methodology Development Primer (8/2019)
- Establishing global financial and economic assumptions for the 2021 Power Plan (07/2019)
- Establish existing system parameters and interpret state policies (07/2019)
- Consistent Treatment of Quantifiable Resource Costs (03/2019)
- Proposed discount rate for the 2021 Power Plan (02/2019)



THE 2021  
NORTHWEST  
POWER PLAN

5

5

## This Month

- **Energy Efficiency and Demand Response Supply Curves**
- **Analytical Process for the Power Plan Continued**
- **Updates on Greenhouse Gas Emmissions**
- **Bonneville EE Plan Update and Background on their statutory responsibilities related to power sales/acquisitions**



THE 2021  
NORTHWEST  
POWER PLAN

6

6

April	May	June
<ul style="list-style-type: none"> <li>• Generation Resources Summary Presentation</li> <li>• EE Typical Meteorological Year Adjustment</li> <li>• Out of Region Load Forecast</li> <li>• CA Climate Inclusive Load Forecast</li> </ul>	<ul style="list-style-type: none"> <li>• Emerging Tech Reference Plant for Scenario Analysis</li> <li>• Updates to Supply Curves for Scenario Analysis</li> <li>• BPA Load Forecast</li> </ul>	<ul style="list-style-type: none"> <li>• System Adequacy (ASCC/ARM)</li> <li>• Electricity Price Forecast</li> <li>• BPA Scenario Supply Curves, etc...</li> </ul>
July	August	September
<ul style="list-style-type: none"> <li>• Baseline Conditions Test Runs</li> <li>• Early Coal Retirement Scenario</li> </ul>	<ul style="list-style-type: none"> <li>• EE Robustness</li> <li>• Extra Regional Markets and Adequacy</li> <li>• Markets for Energy/Capacity</li> </ul>	<ul style="list-style-type: none"> <li>• Greenhouse Gas Tipping Point</li> <li>• Bonneville Portfolio</li> <li>• Paths to Decarb</li> <li>• Overview of other technical material</li> </ul>

