
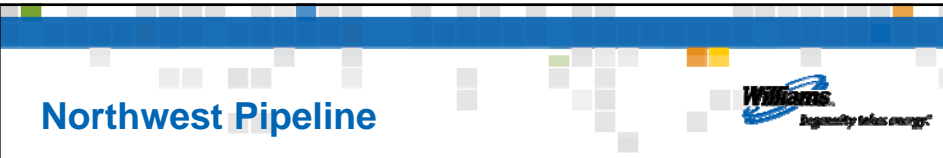


Cold weather event Dec 6-10, 2013

Mike Rasmuson
Director, Marketing Services
Northwest Pipeline

© 2011 The Williams Companies, Inc. All rights reserved.



Northwest Pipeline

- About Northwest Pipeline
- Prices
- OFO
- Weather – Forecasted and Actual
- Entitlement
- Power Gen load
- Total System Load

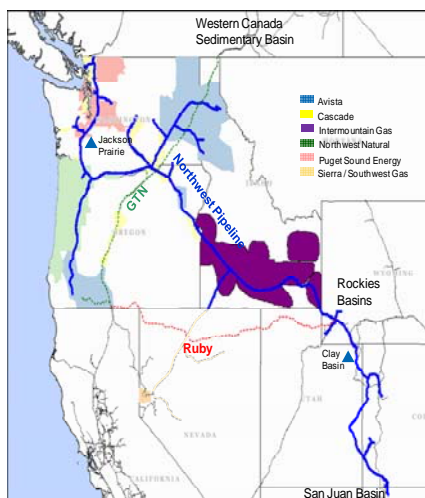
© 2011 The Williams Companies, Inc. All rights reserved.

Northwest Power Council January 15, 2014

2

Northwest Pipeline

- The Northwest Pipeline system has been serving the PNW for over 50 years
- Interconnects with seven interstate pipelines in the Rockies
 - EPNG, TW, Kern River, Southern Trails, CIG, WIC and Questar
- 3.9 MMdth/d Long-term firm transportation – >10 yrs contract life
- 14 MMdth of storage capacity (731 Mdth/d deliverability)
- Bi-direction system with access to abundant domestic and Canadian gas supplies
- Solution oriented
 - History of expanding the system to meet customers growth needs
 - History of working with our customers both creative and collaboratively to serve their needs



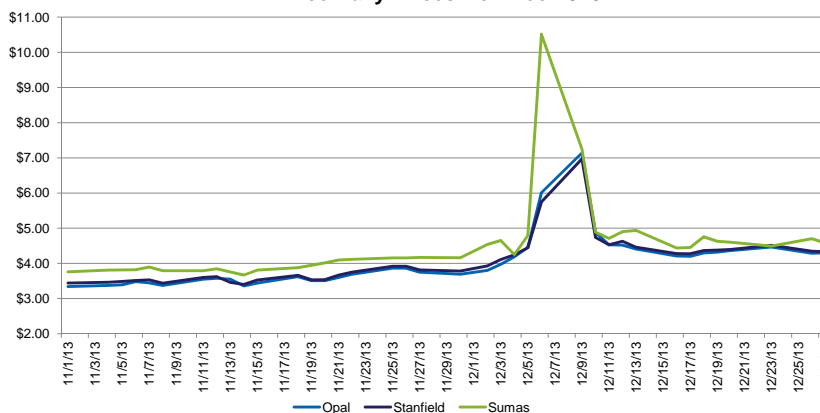
© 2011 The Williams Companies, Inc. All rights reserved.

Northwest Power Council January 15, 2014

3

Prices Nov-Dec 2013

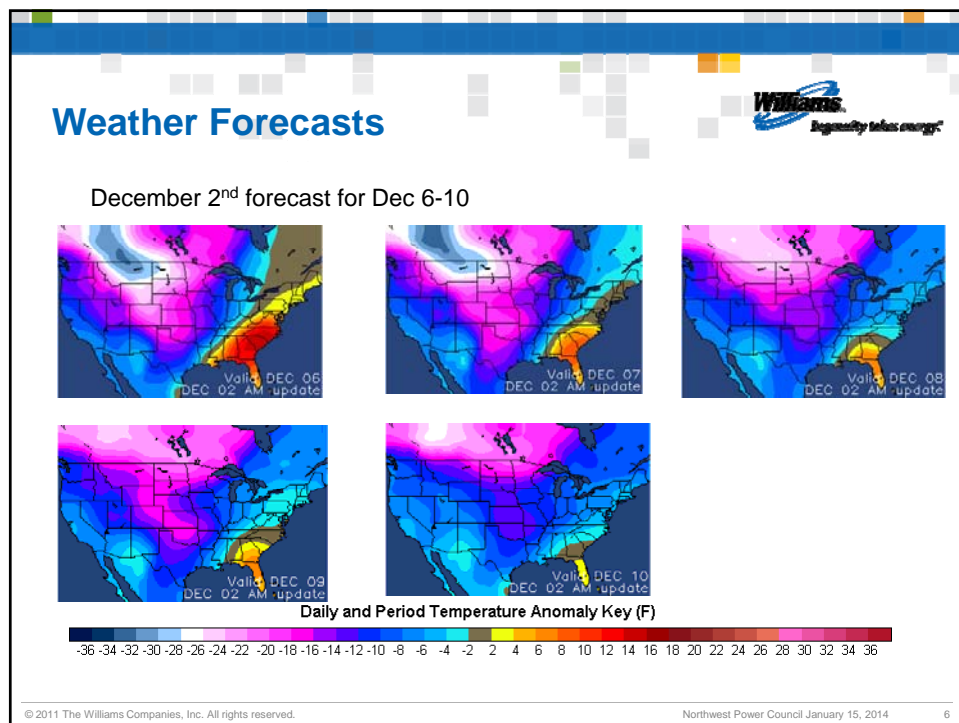
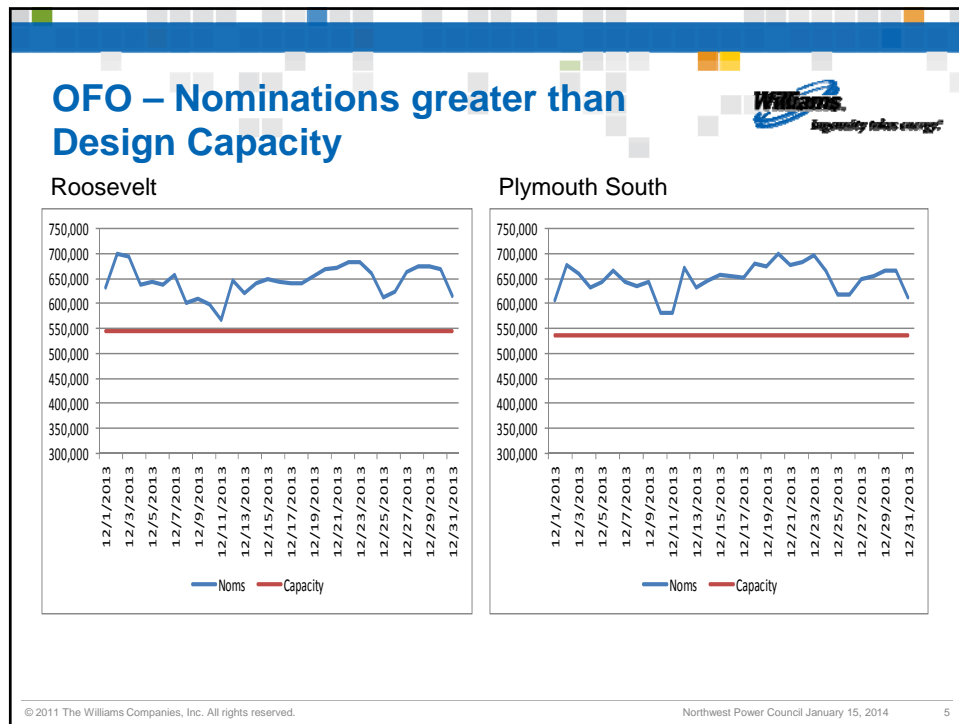
Ice Daily Prices Nov-Dec 2013



© 2011 The Williams Companies, Inc. All rights reserved.

Northwest Power Council January 15, 2014

4



Entitlement



- > Weather was predicted to be a 10 year cold weather event
- > In response, Northwest declared a Stage II (8%) Entitlement for the system north of Kemmerer
- > Under an Entitlement, Shippers are subject to the penalty provisions in the Tariff if deliveries exceed nominations above the stated tolerances

© 2011 The Williams Companies, Inc. All rights reserved.

Northwest Power Council January 15, 2014

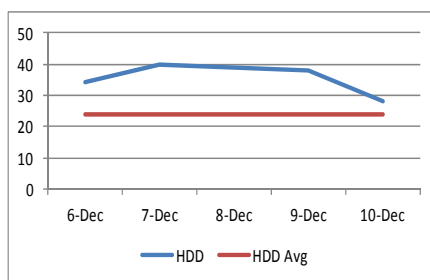
7

Weather Actual and HDD



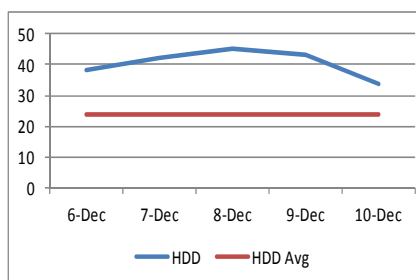
Seattle

December	Hi	Lo	HDD	HDD Avg
6	35	27	34	24
7	32	18	40	24
8	34	18	39	24
9	34	21	38	24
10	41	32	28	24



Portland

December	Hi	Lo	HDD	HDD Avg
6	30	24	38	24
7	30	15	42	24
8	28	12	45	24
9	29	14	43	24
10	34	27	34	24



© 2011 The Williams Companies, Inc. All rights reserved.

Northwest Power Council January 15, 2014

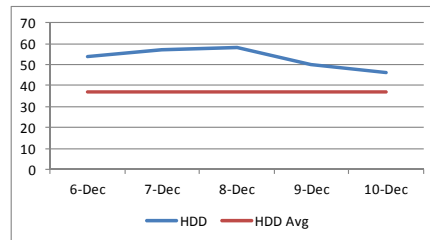
8

Weather Actual and HDD



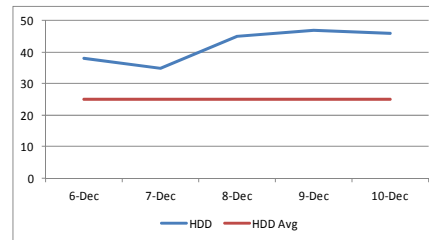
Spokane

December	Hi	Lo	HDD	HDD Avg
6	17	5	54	37
7	15	0	57	37
8	15	-2	58	37
9	20	9	50	37
10	27	11	46	37



Grants Pass

December	Hi	Lo	HDD	HDD Avg
6	37	16	38	25
7	33	27	35	25
8	25	14	45	25
9	28	8	47	25
10	30	8	46	25



© 2011 The Williams Companies, Inc. All rights reserved.

Northwest Power Council January 15, 2014

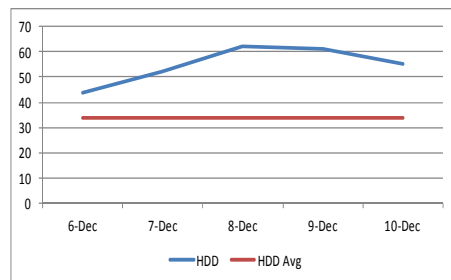
9

Weather Actual and HDD



Boise

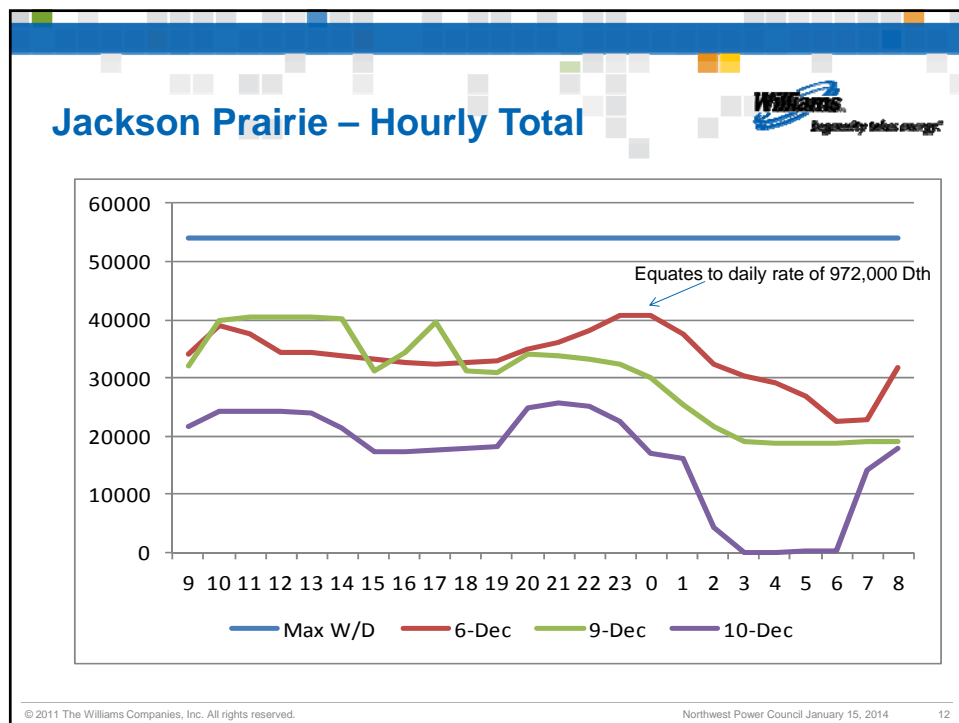
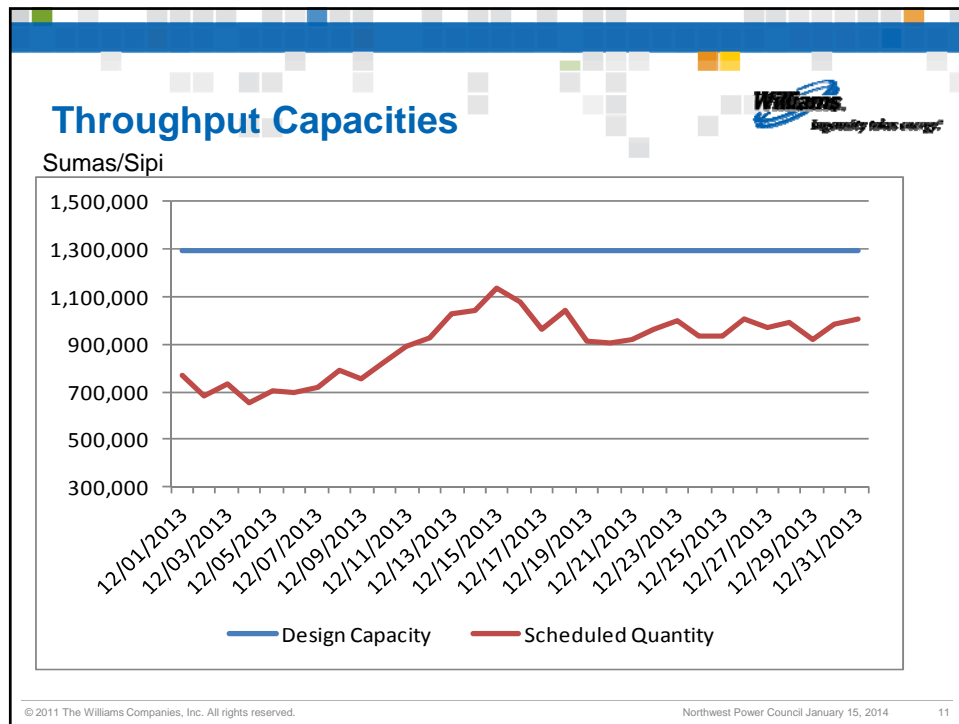
December	Hi	Lo	HDD	HDD Avg
6	26	15	44	34
7	24	2	52	34
8	11	-6	62	34
9	14	-7	61	34
10	15	4	55	34

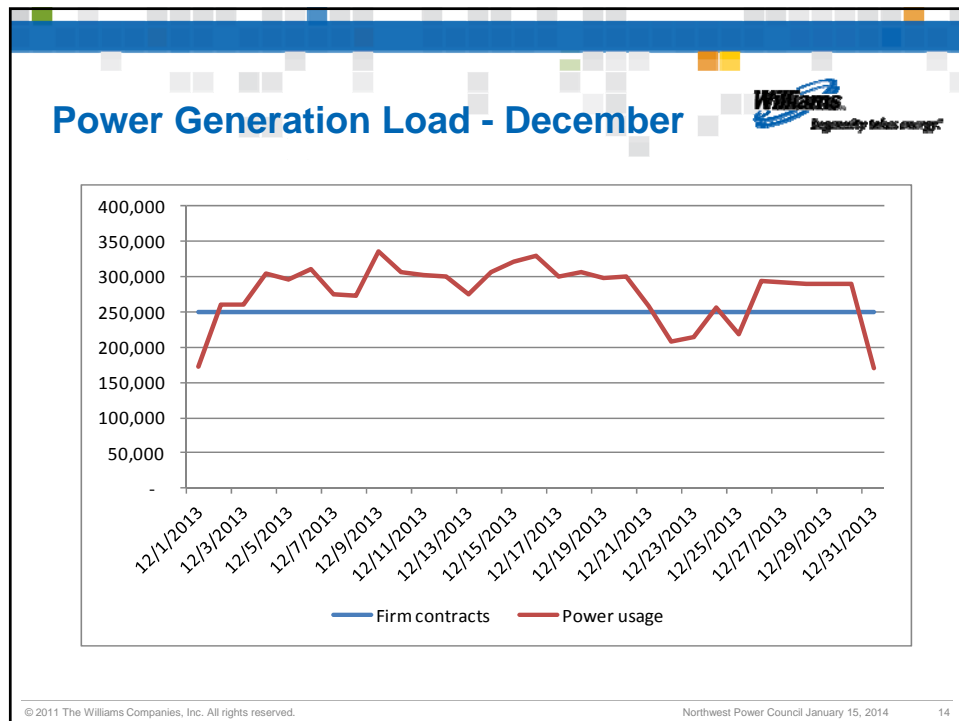
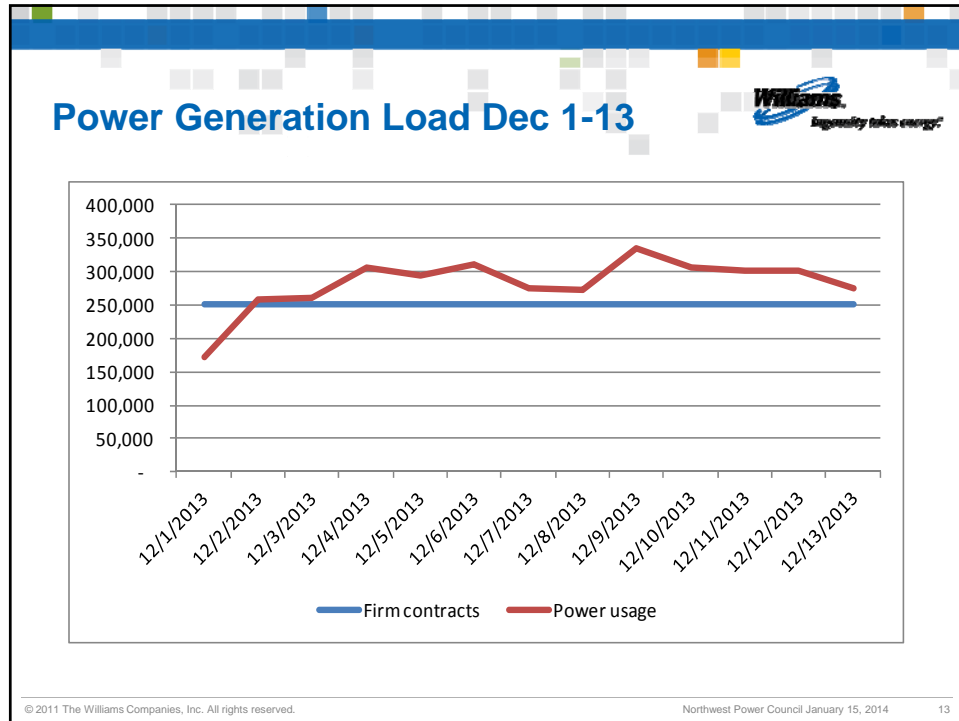


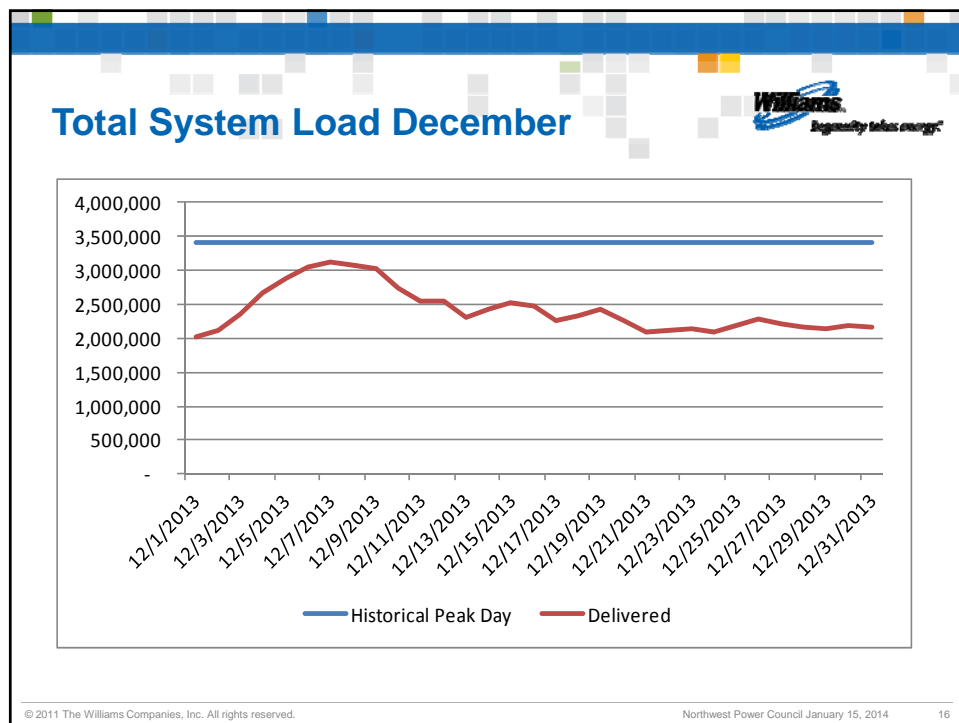
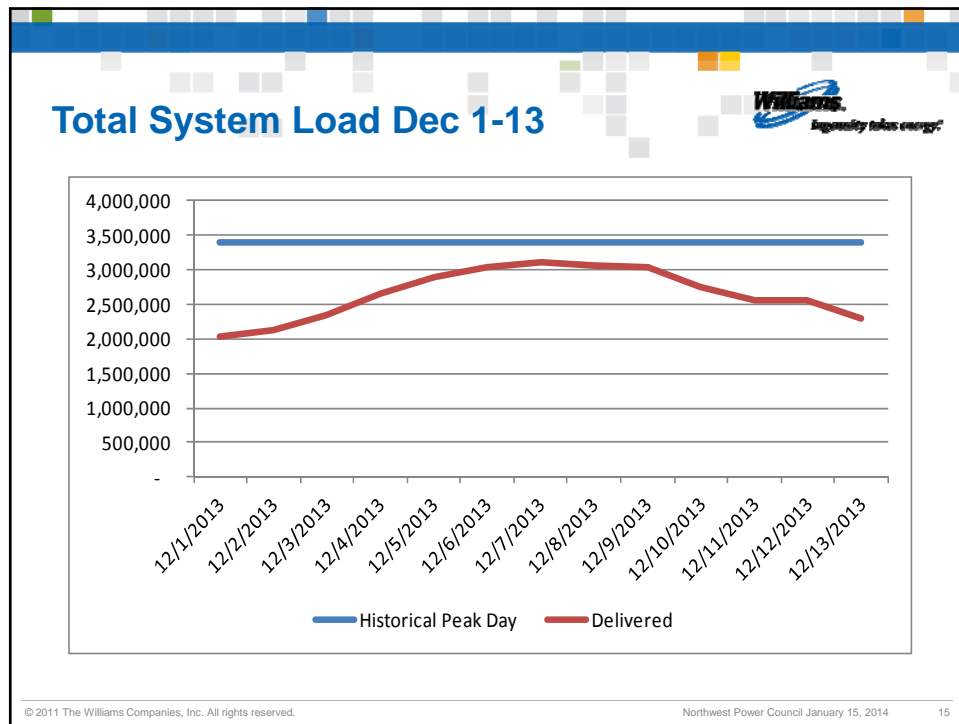
© 2011 The Williams Companies, Inc. All rights reserved.

Northwest Power Council January 15, 2014

10







Summary



- > Northwest's advanced actions allowed it to meet all of its firm obligations
- > Sumas Prices spiked to over \$10 per Dth
- > The power gen load stayed above contracted levels throughout December
- > Note: In order for Northwest to continue to meet these power gen levels on a contractual peak-day will require a system expansion on Northwest system